

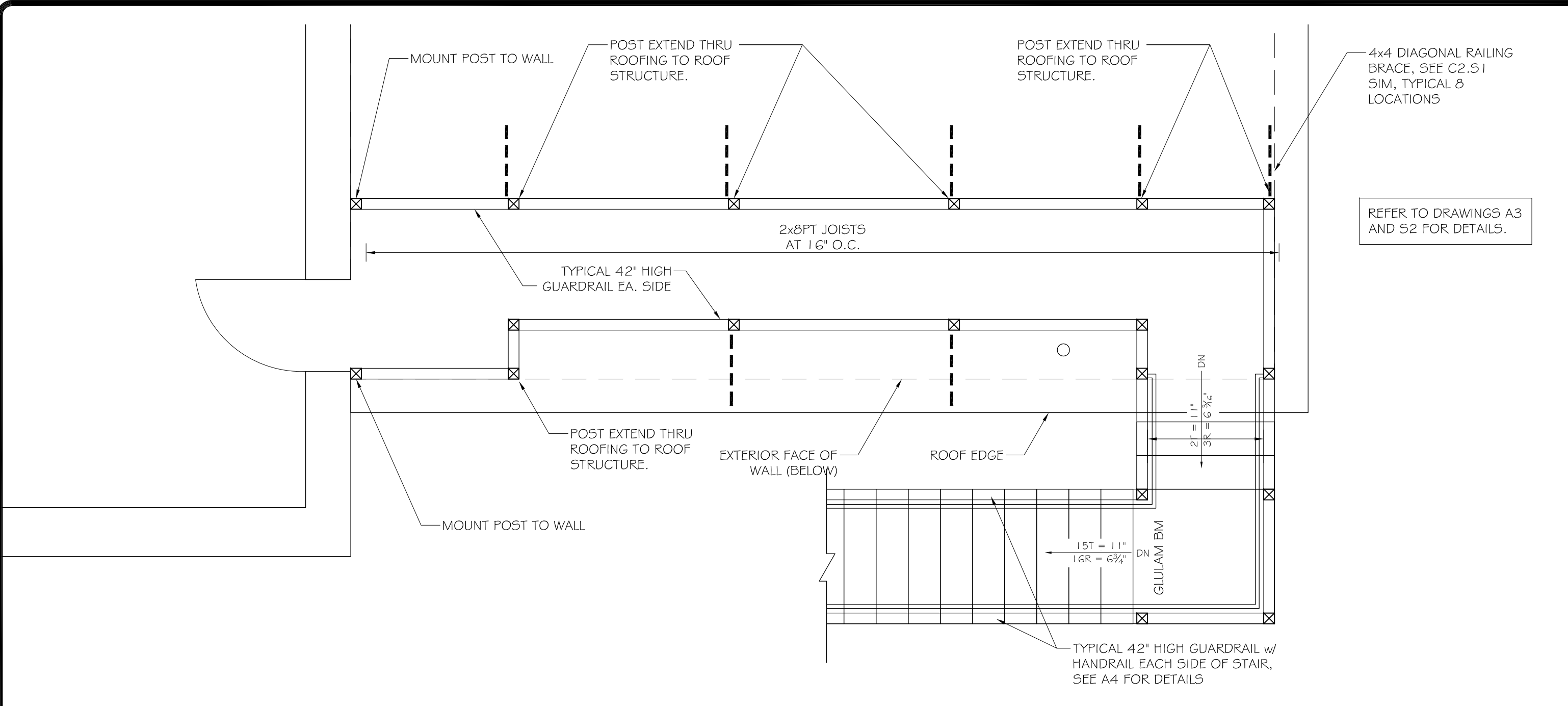
ASSOCIATED DESIGN PARTNERS INC.
 Office: (207) 878-1751
 80 Leighton Road, Falmouth, Maine 04105
 Fax: (207) 878-1788
 E-Mail: adp@adpengineering.com

THIS DRAWING, DESIGN AND ELECTRONIC FILE ARE THE PROPERTY OF ASSOCIATED DESIGN PARTNERS, INC. THE REPRODUCTION, COPYING OR ANY OTHER USE OF THIS DOCUMENT WITHOUT WRITTEN CONSENT IS PROHIBITED.

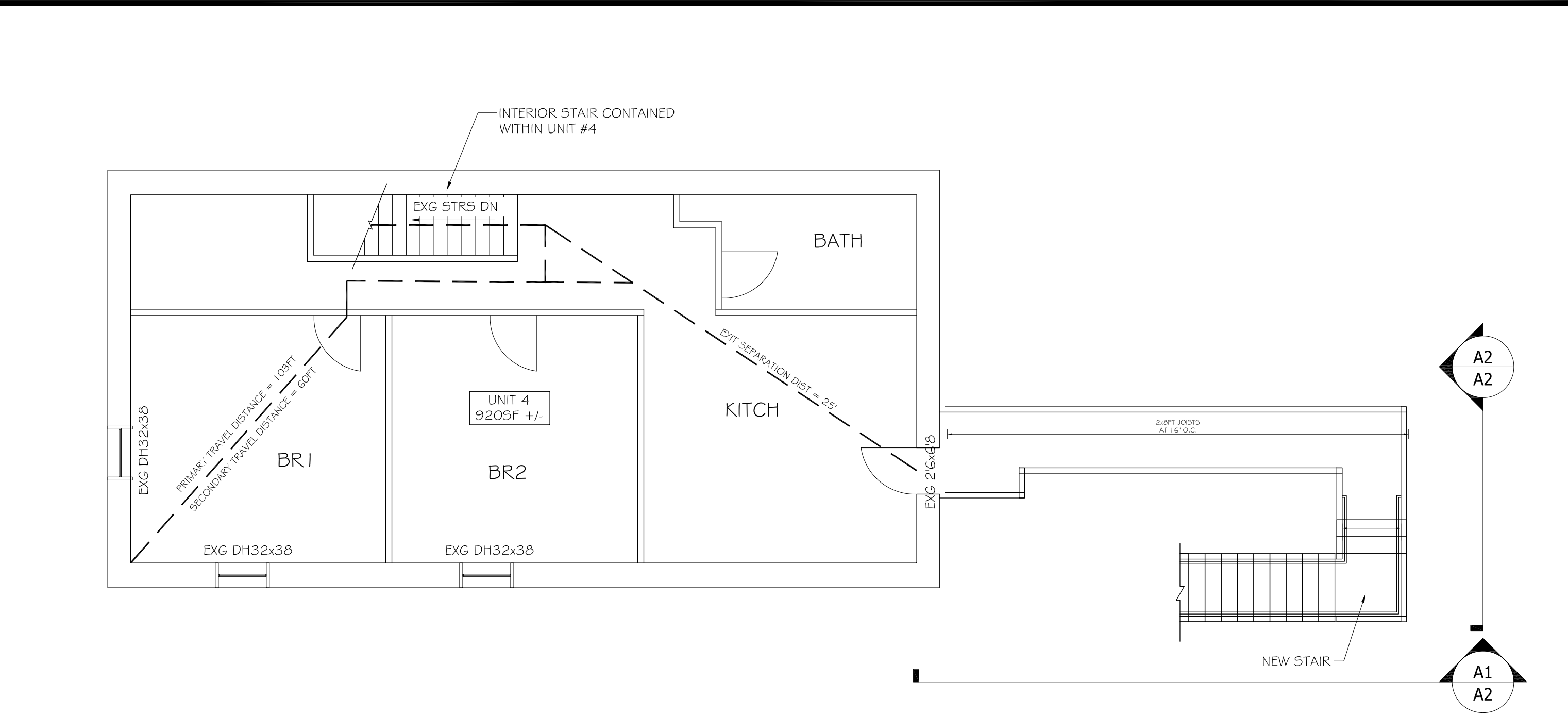
PROJECT: **158 CUMBERLAND AVE**
 PORTLAND, MAINE
 SHEET TITLE: **EGRESS AND STAIR FLOOR PLANS ISSUED FOR PERMITTING**

NO.	BY	DATE	DESCRIPTION
1	ASW		
2			
3			
4			
5			

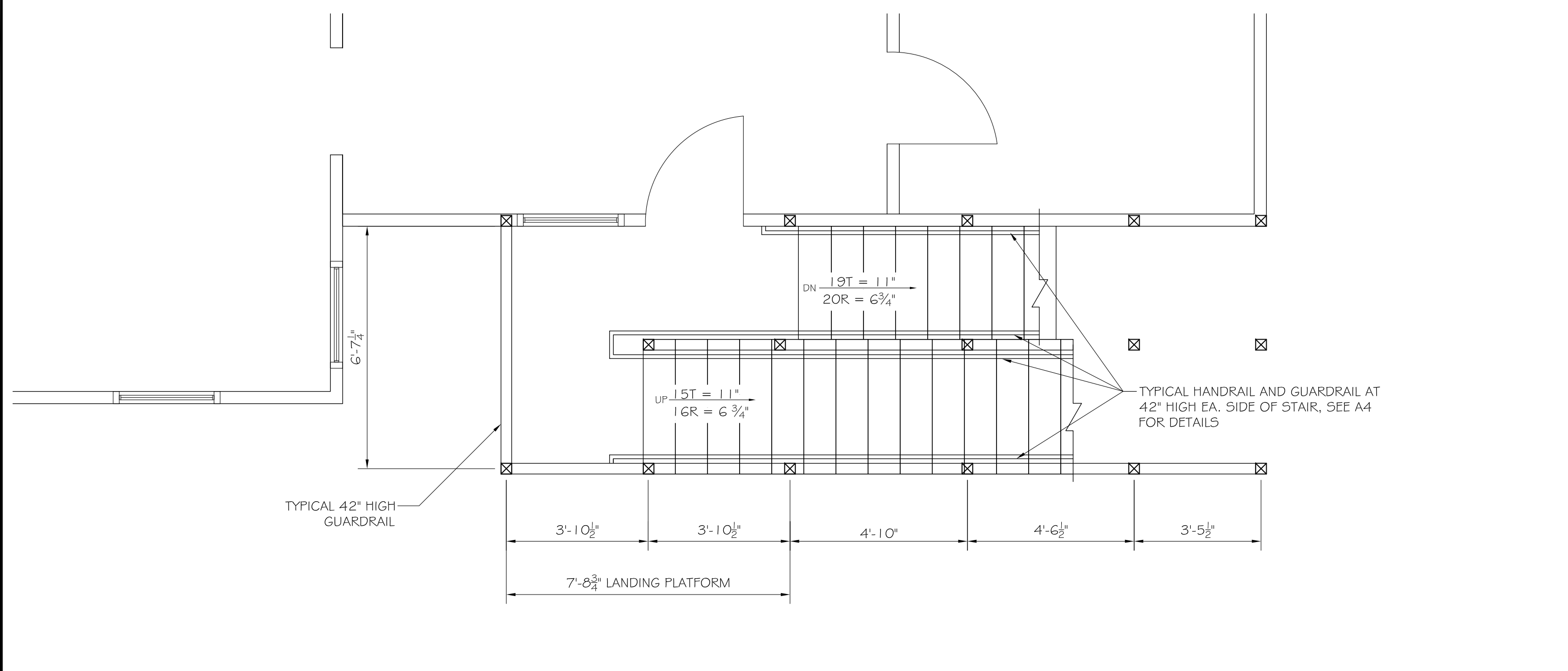
DATE: 11-18-16
 SCALE: AS NOTED
 DESIGN BY: ASW
 DRAWN BY: RSC
 PROJECT NUMBER: **16241**
 SHEET NO: **A1**



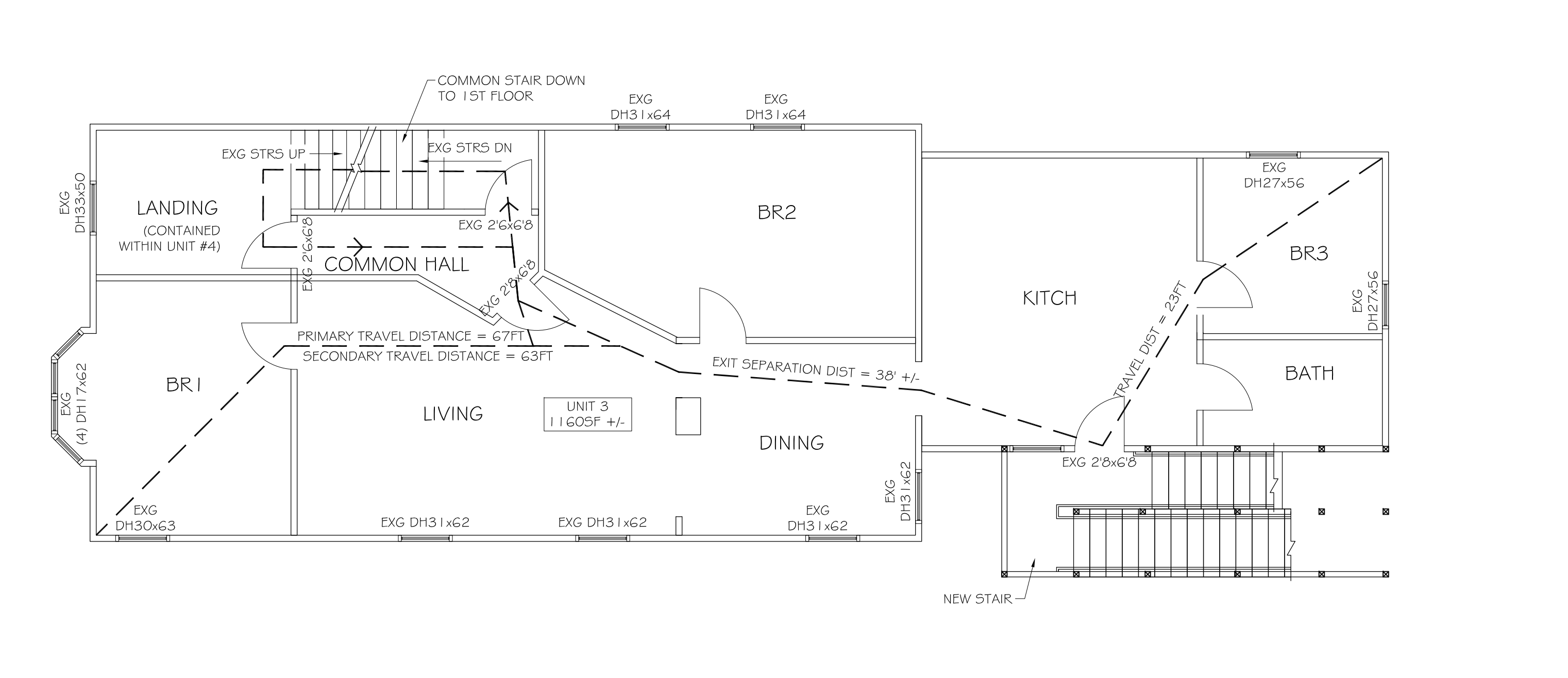
C2 3RD FLOOR EGRESS STAIR PLAN
 SCALE: 3/8" = 1'-0"



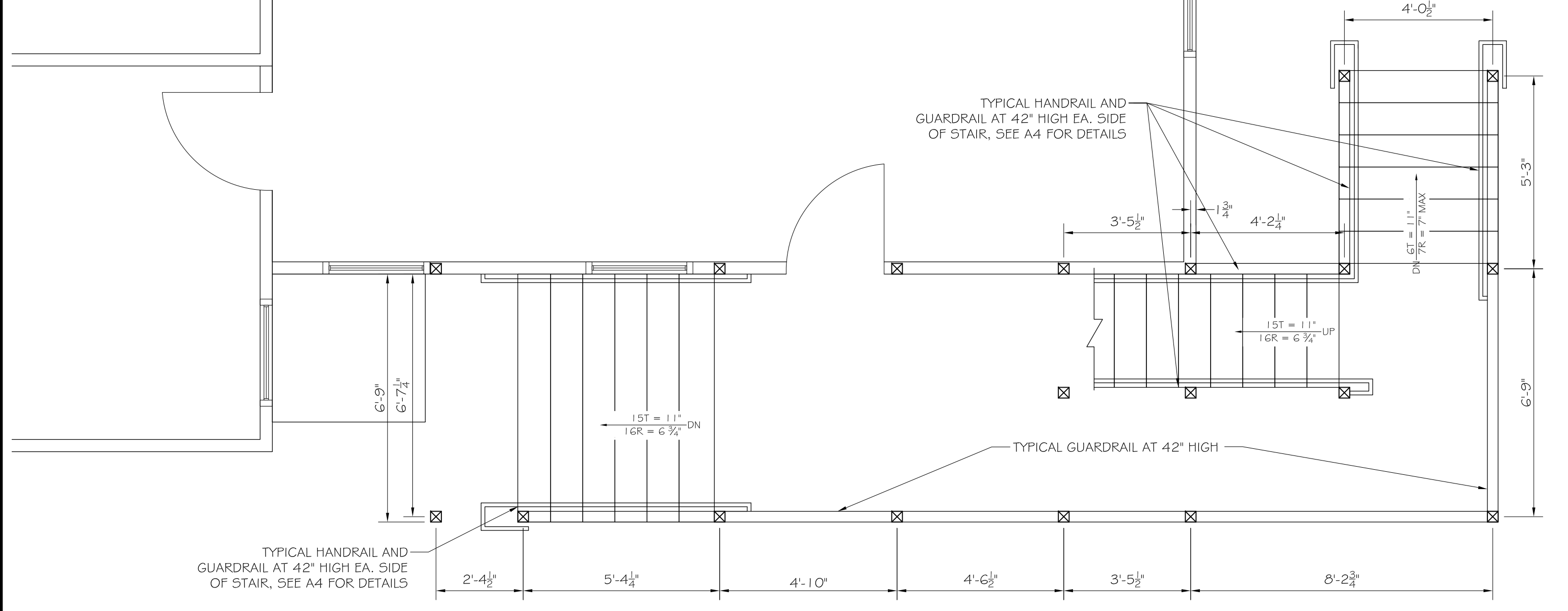
C1 3RD FLOOR EGRESS PLAN
 SCALE: 3/8" = 1'-0"



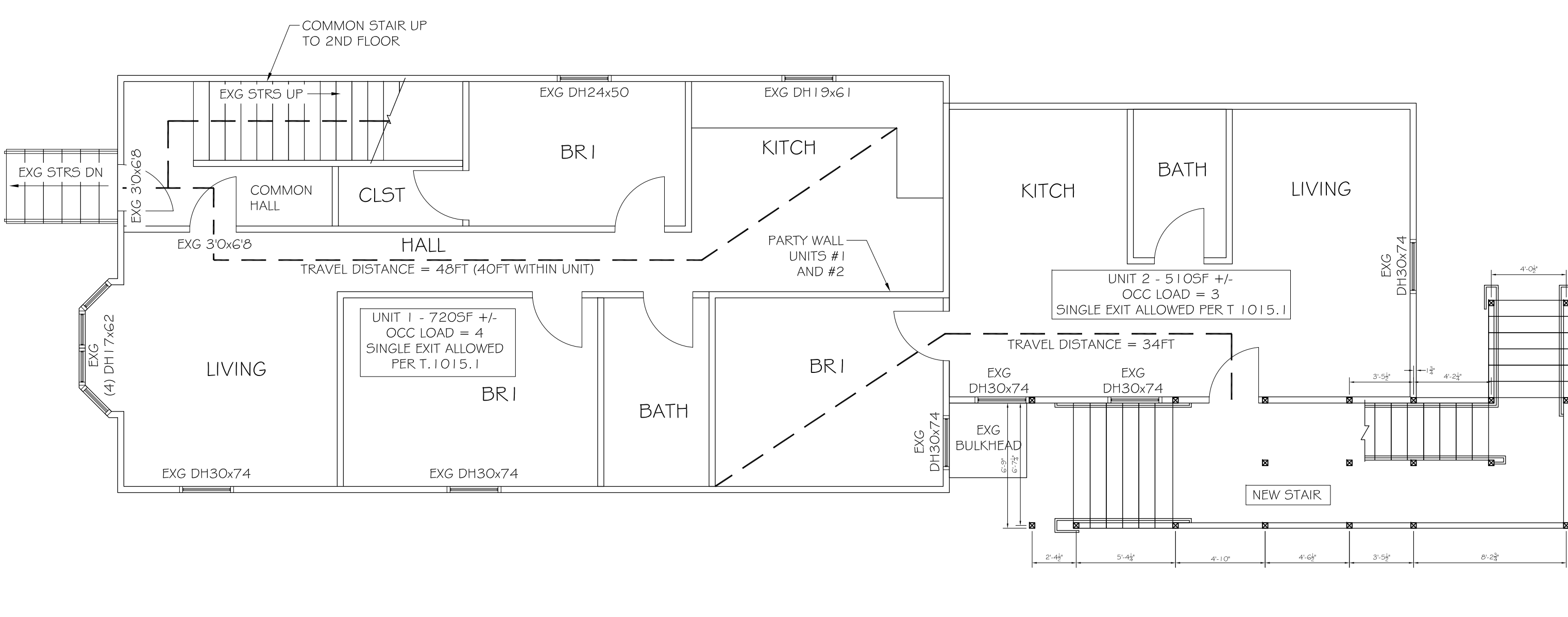
B2 2ND FLOOR EGRESS STAIR PLAN
 SCALE: 3/8" = 1'-0"



B1 2ND FLOOR EGRESS PLAN
 SCALE: 3/8" = 1'-0"



A2 1ST FLOOR NEW EGRESS STAIR PLAN
 SCALE: 3/8" = 1'-0"



A1 1ST FLOOR EGRESS PLAN
 SCALE: 3/8" = 1'-0"