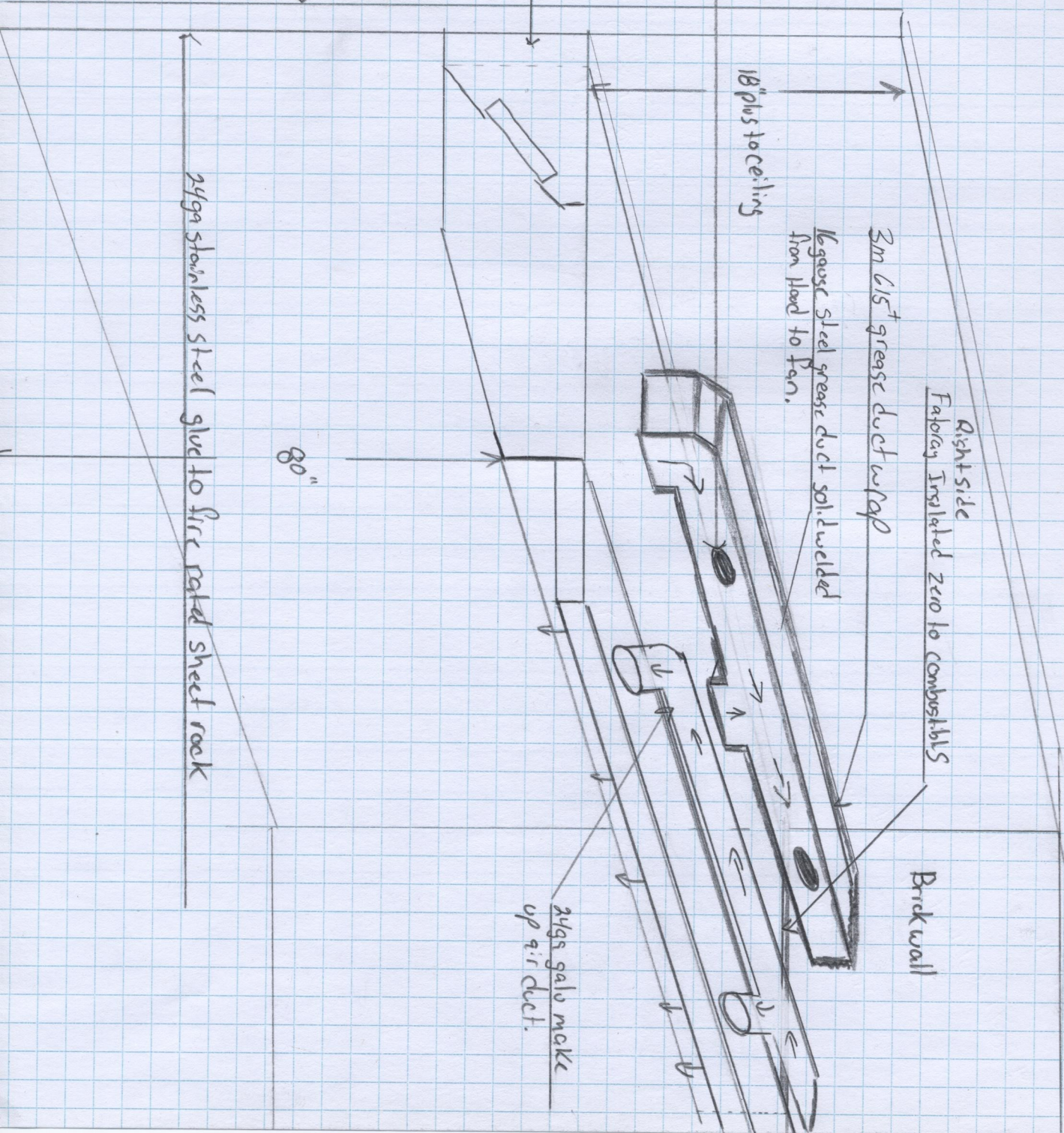


Hood view

High-temp clean o/J-
doors

3' air space behind Hood

5/8" sheet rock fire coded
on metal studs



3m dia grease duct wrap

16 gauge steel grease duct solid welded
from hood to fan.

Right side
Factory Insulated zero to combustibles

Brick wall

24gs galv mck
up air duct.

80"

24ga stainless steel glue to fire rated sheet rock