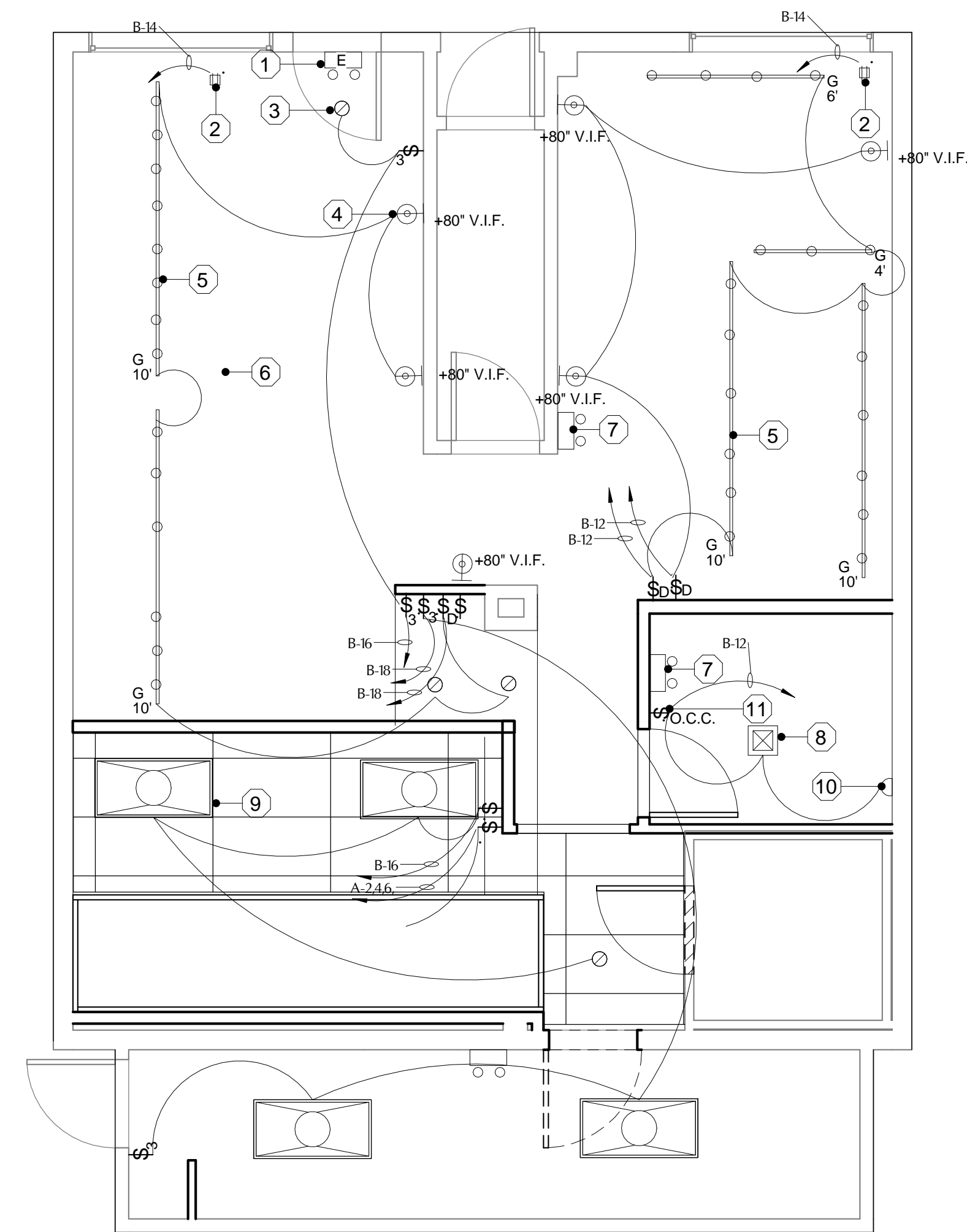


	SYMBOL	QTY	DESCRIPTION	LAMP	TOTAL WATTAGE	NOTE
1		1	ILLUMINATED EXIT LIGHTS AND EMERGENCY LIGHTS			
2		2	CEILING MTD DUPLEX OUTLET			
3		4	RECESSED LED DOWNLIGHT LITHONIA 4BPMWLED27K90CRI M6	11.2W	45W	
4		6	(N) SCONCE @ BOOTH HOUSE OF TROY LS 217	(6) 60W B10	360W	DIMMABLE LED W/ SWITCH
5			CEILING MT. LED TRACK LIGHTS			DIMMABLE LED W/ SWITCH LENGTH INDICATED ON PLAN
6			(E) TIN CEILING TILE TO BE REMAIN			
7		3	EMERGENCY LIGHTS			
8			EXHAUST FAN W/ LED LIGHT BROAN RB110L 18W GU24	18W	18W	
9		4	2X4 LED RECESSED LENSED TROFFER LITHONIA 2GT8 3 32	(3) T-8 32W@96W	96W X 4 @ 384W	
10		1	(E)(R) SCONCE @ TOILET BARN LIGHT COLLEGGATE 2-LIGHT SCHOOLHOUSE VANITY LIGHT	GU24 9WX4@36W	72WV	CONNECT TO O.C.C. SWITCH
11		1	(N) OCCUPANCY SENSOR SWITCH @ TOILET			LITHONIA ELMLT LED



1 LIGHTING PLAN
1/4" = 1'-0"

REVISION

PROJECT NUMBER 150101
DRAWN Author
CHECKED Checker
DATE
SCALE

LIGHTING PLAN ELECTRICAL NOTE

Tenant Improvement
Uncle Billy's BBQ
166 CUMBERLAND AVE
PORTLAND ME 04101

E-1.0