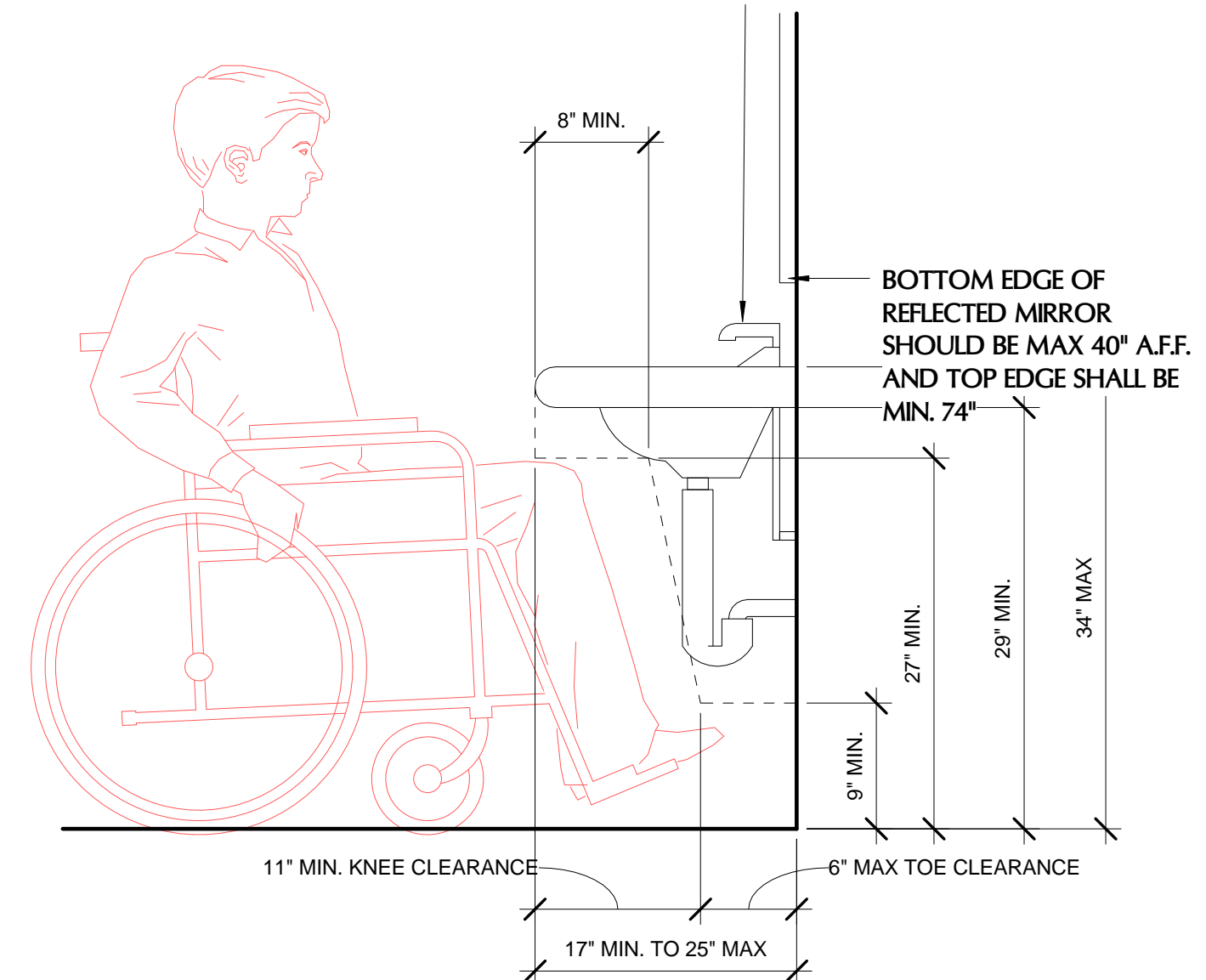


6 GRAB BAR SECTION
3" = 1'-0"

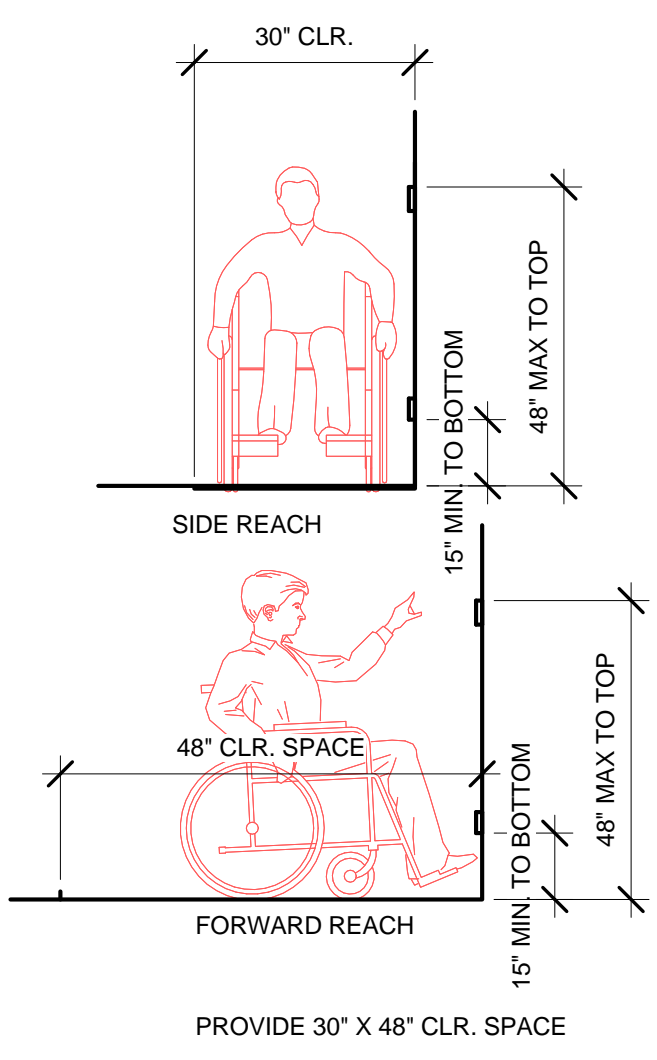
NOTE: STRUCTURAL STRENGTH TO BE MIN 250 LB. WITH 1/8" MIN. RADIUS AT ALL EDGES.

NOTE: LAVATORY FAUCET CONTROLS SHALL BE OPERABLE WITH ONE HAND AND SHALL NOT REQUIRE TIGHT GRASPING, PINCHING OR TWISTING OF THE LIST. THE FORCE REQUIRED TO ACTIVATE CONTROLS SHALL BE NO GREATER THAN 5LB. PROVIDE LEVER OPERATED PUSH TYPE.



NOTE: WATER SUPPLY AND DRAIN PIPES UNDER LAVATORIES AND SINK MUST BE INSULATED OR CONFIGURED TO PROTECT AGAINST CONTACT.
NO SHARP OR ABRASIVE SURFACES UNDER LAVATORIED AND SINK.
SINK MUST BE 6 1/2" DEEP MAX.
SOAP DISPENSER AND PAPER TOWLE SHOULD BE MOUNT AT MAX. 40 A.F.F.

4 Accessible Lavatory
1" = 1'-0"



5 REACH RANGE ADA/ TABLE COUNTER
1/4" = 1'-0"

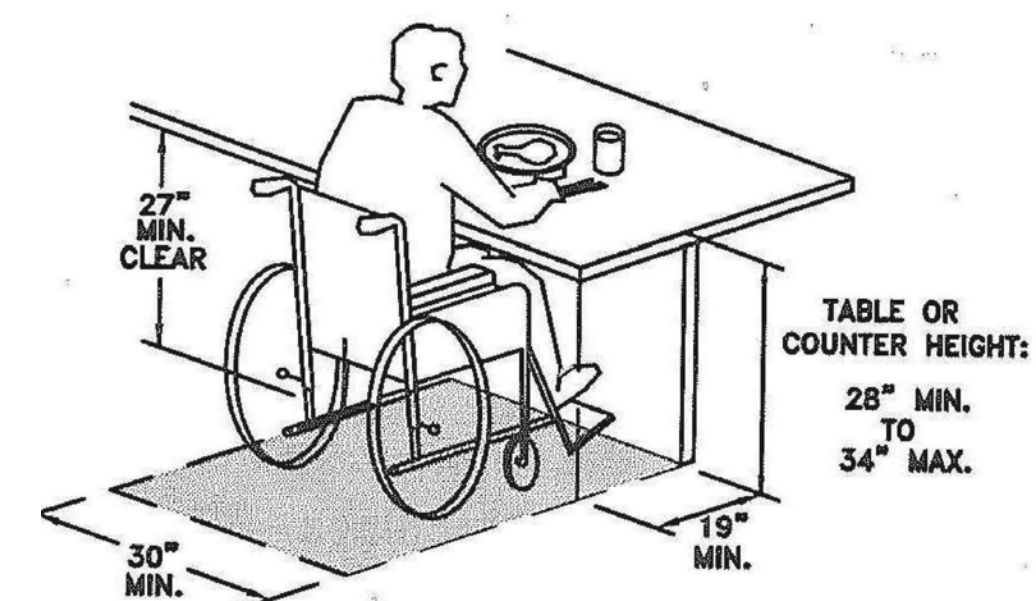
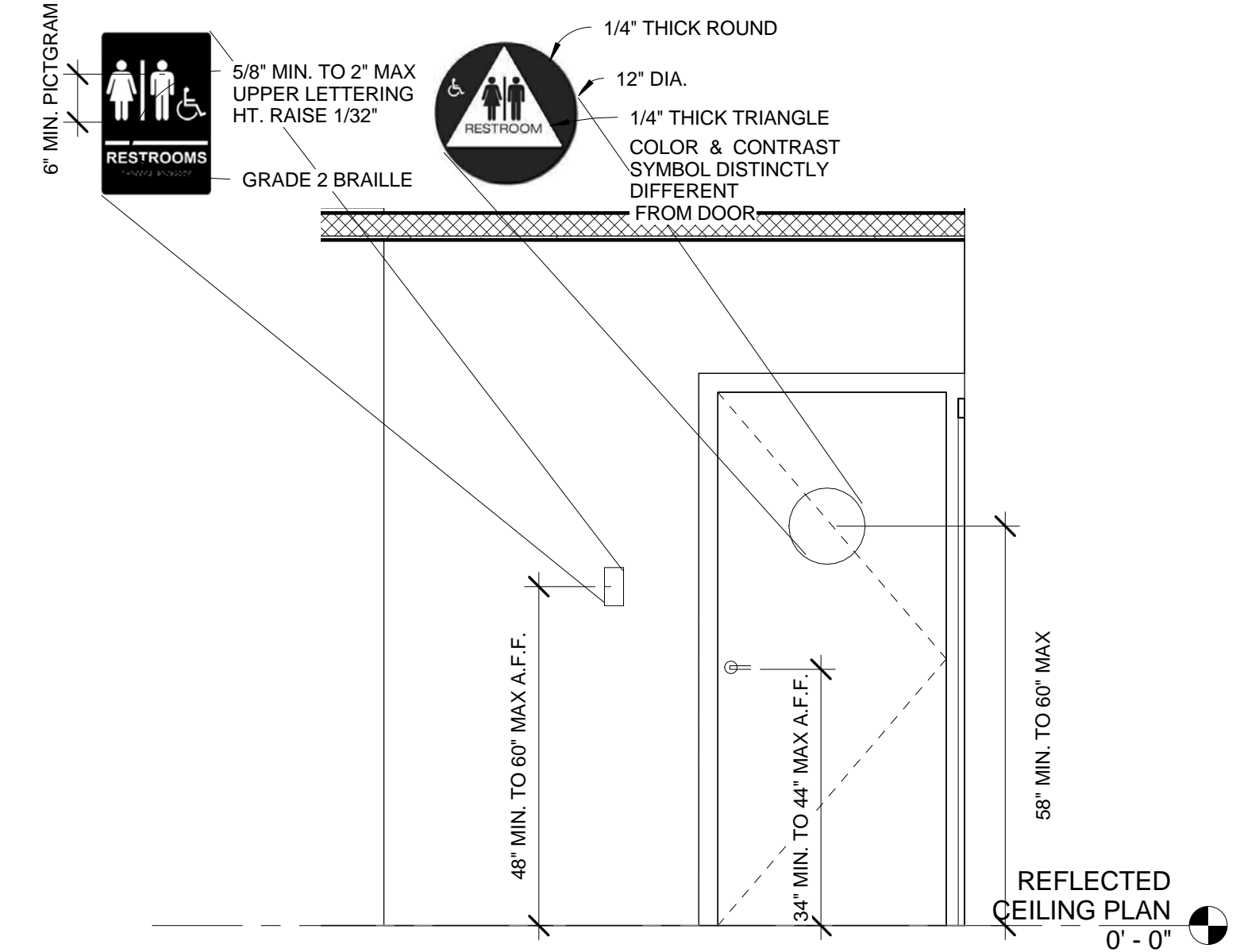
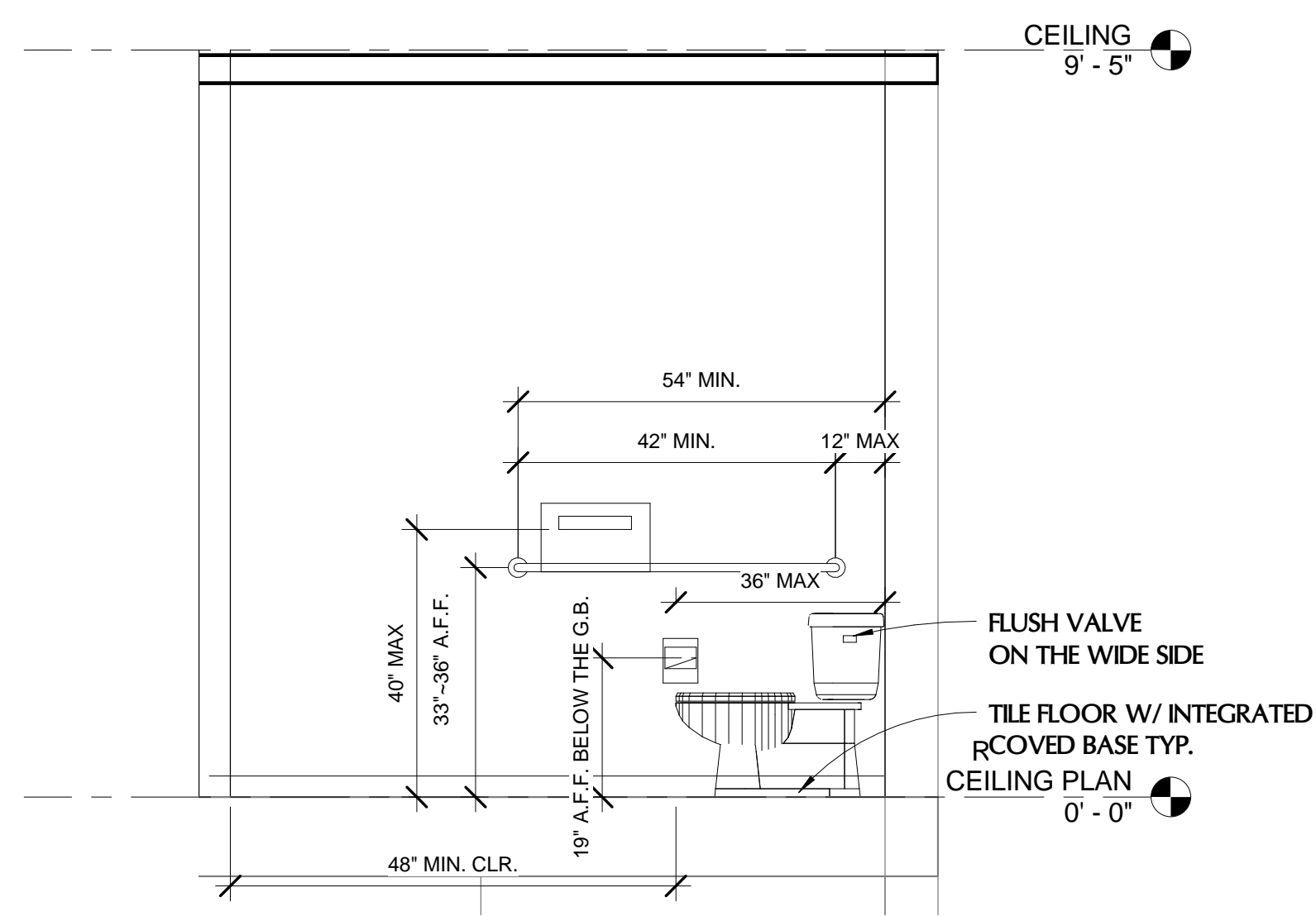


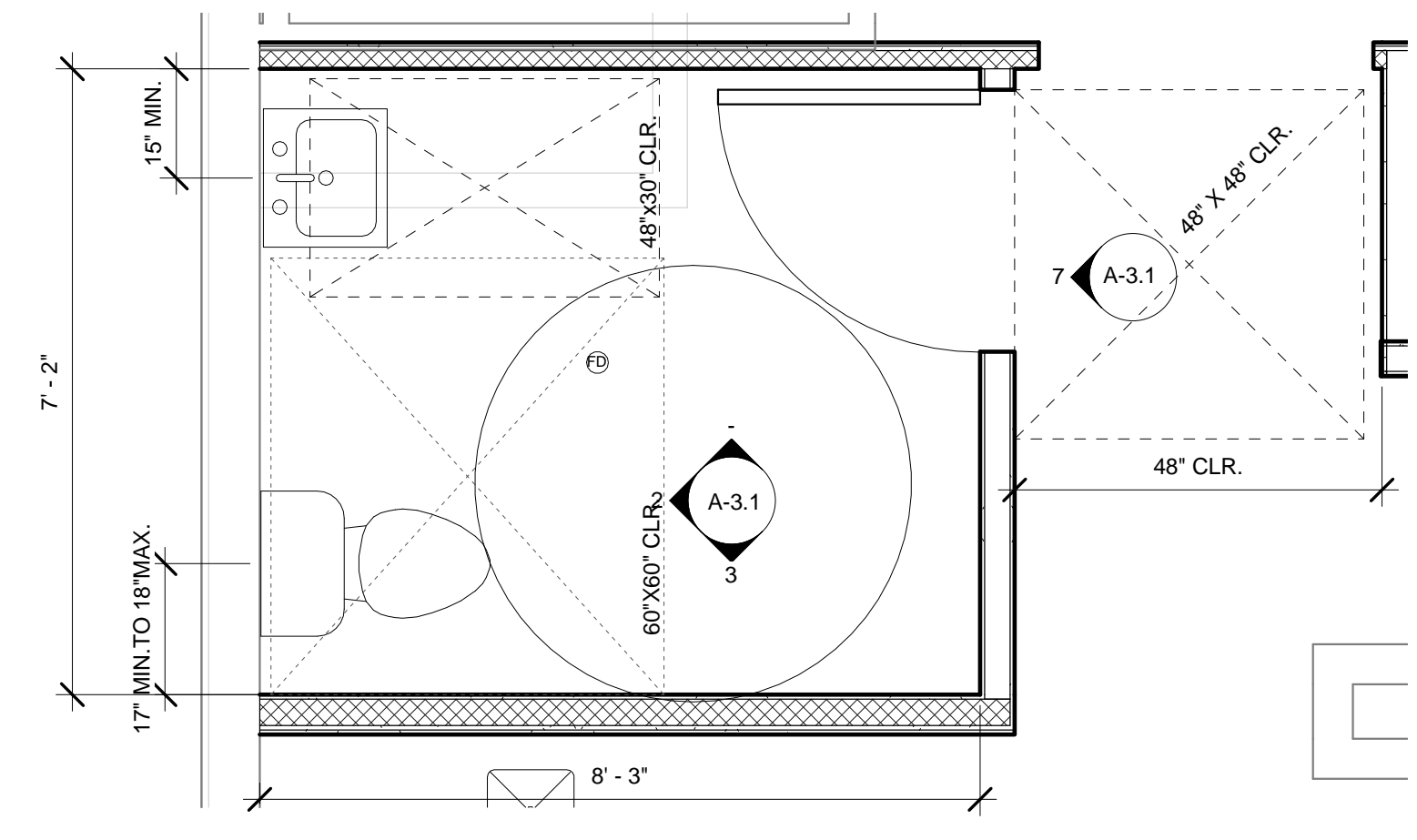
TABLE OR COUNTER HEIGHT:
28" MIN. TO 34" MAX.



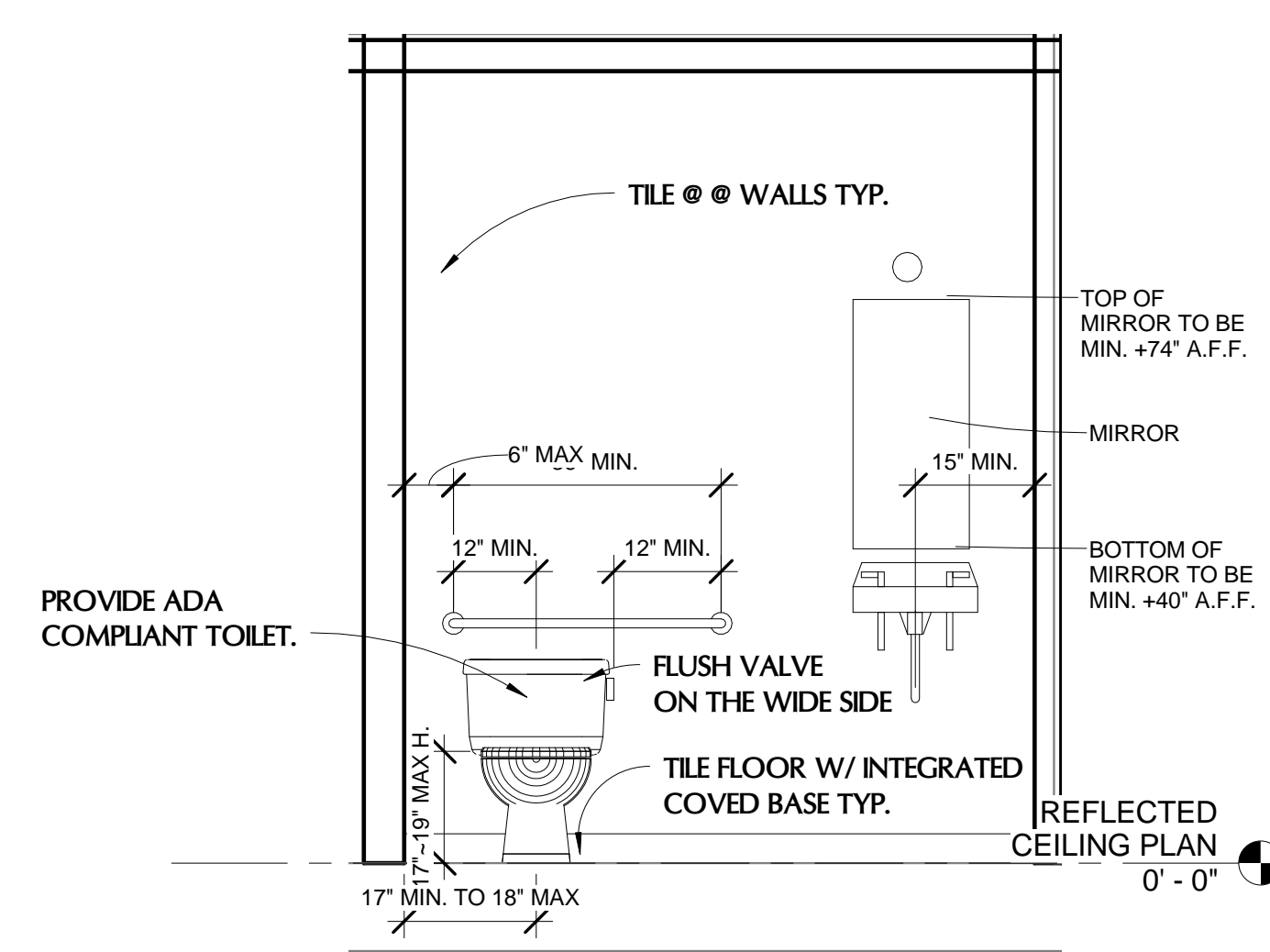
7 Elevation 2 - a
1/2" = 1'-0"



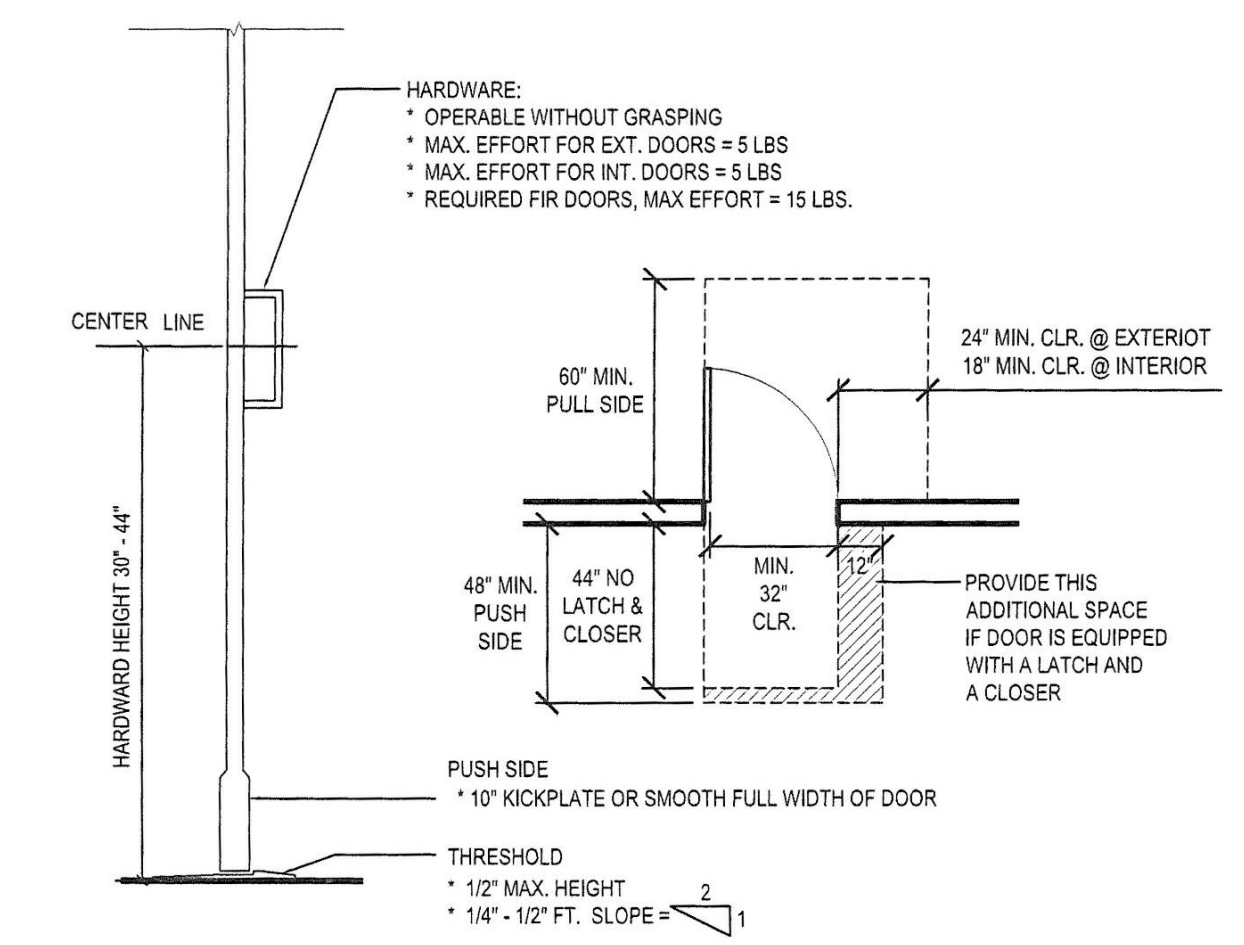
3 Elevation 1 - a
1/2" = 1'-0"



1 Callout of PROPOSED FLOOR PLAN
1/2" = 1'-0"



2 1 - a
1/2" = 1'-0"



ENTRY DOOR DETAIL

REVISION

Tenant Improvement
Uncle Billy's BBQ
166 CUMBERLAND AVE
PORTLAND ME 04101

PROJECT NUMBER 150101
DRAWN Author
CHECKED Checker
DATE
SCALE

TOILET/ADA

A-3.1