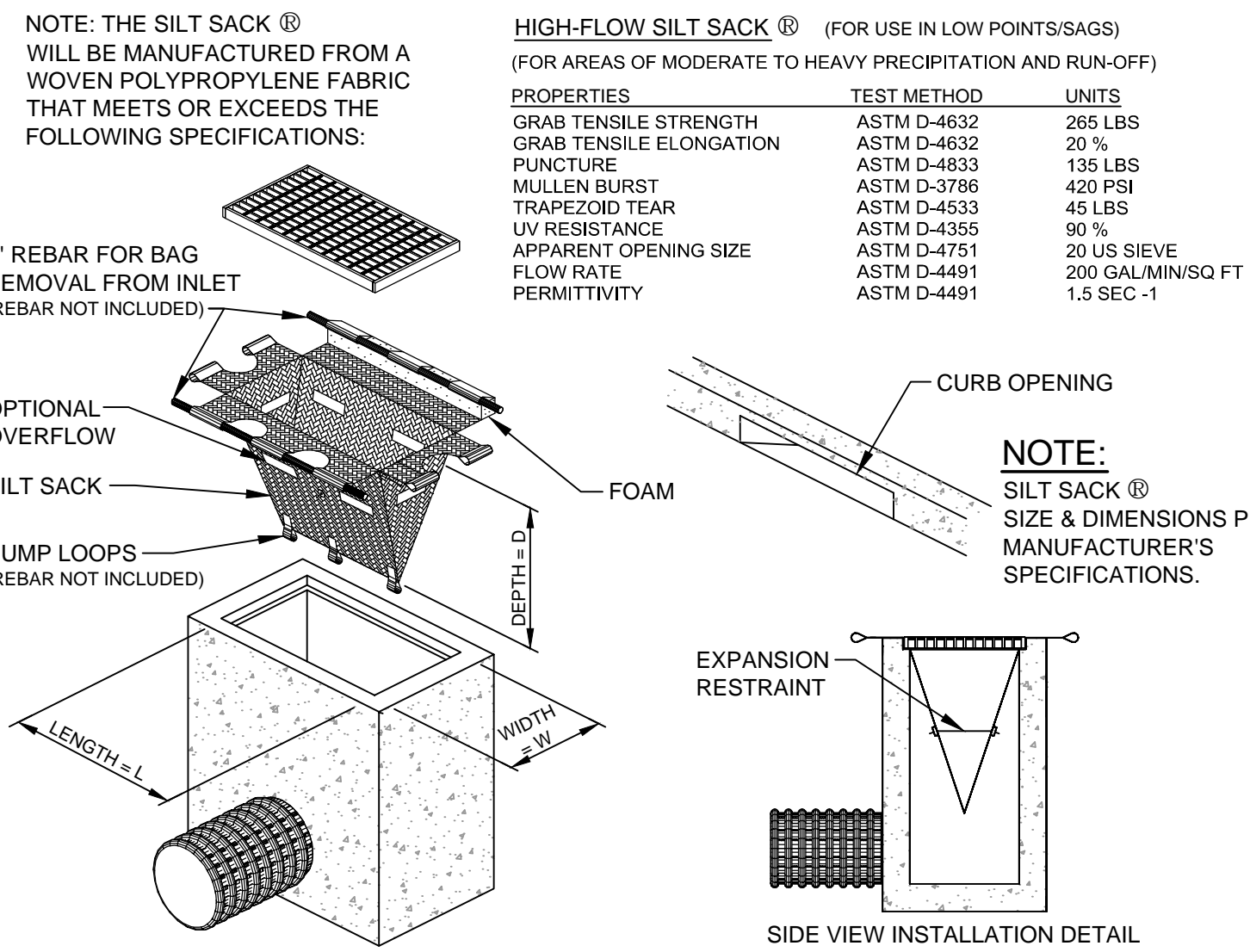
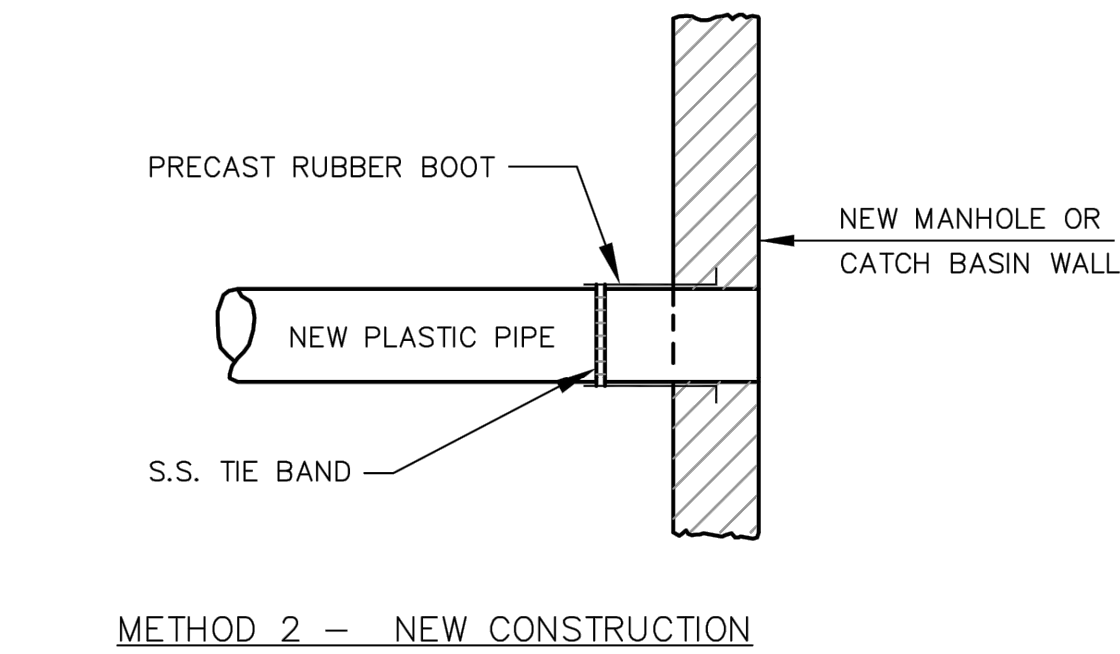


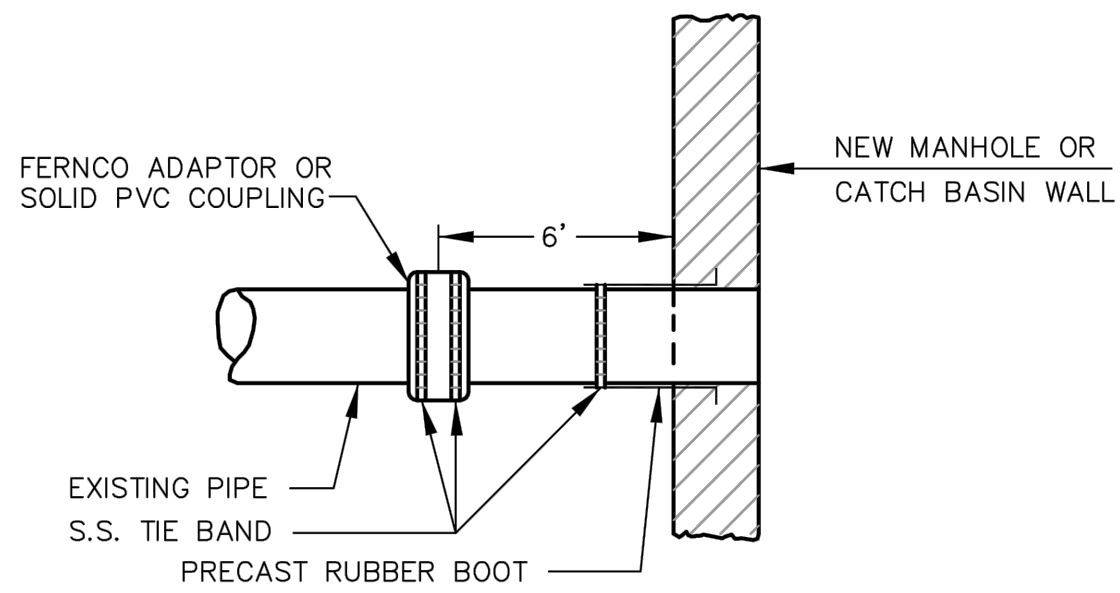
**(A) ORANGE CONSTRUCTION FENCE DETAIL**  
N.T.S.



**(C) SILT SACK® DETAIL & SPECIFICATIONS**  
N.T.S.



METHOD 2 - NEW CONSTRUCTION



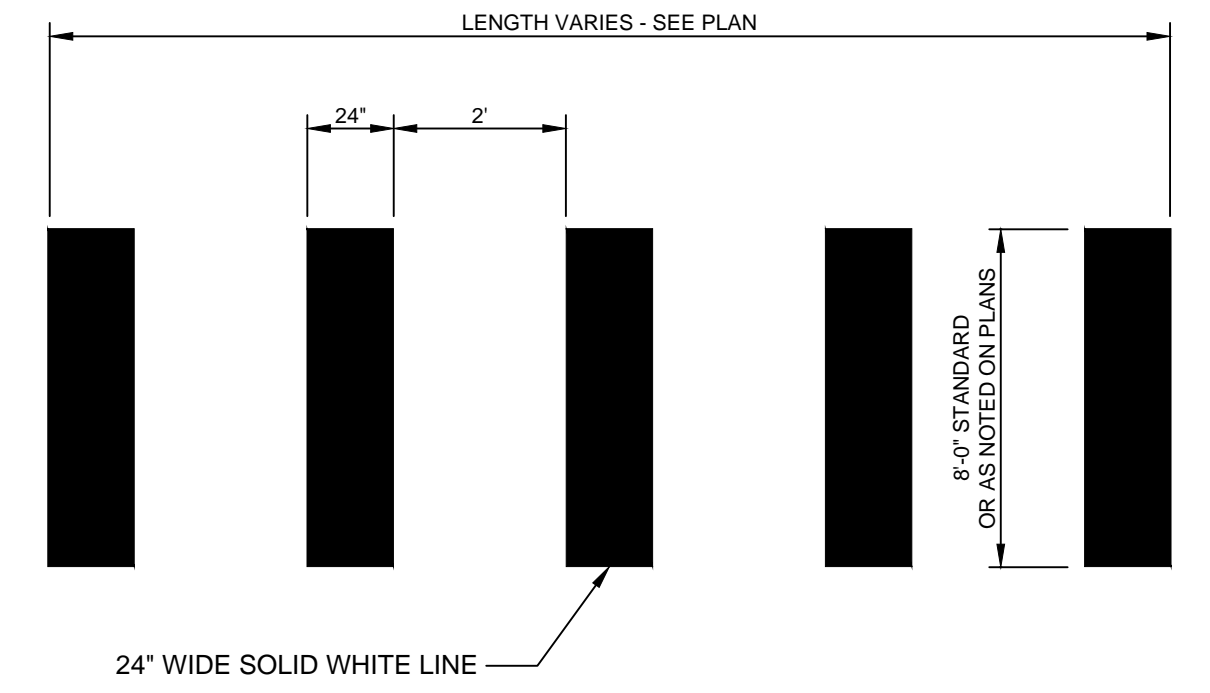
METHOD 1 - EXISTING PIPE INTO NEW STRUCTURE

**PLASTIC PIPE CONNECTIONS**

NOT TO SCALE

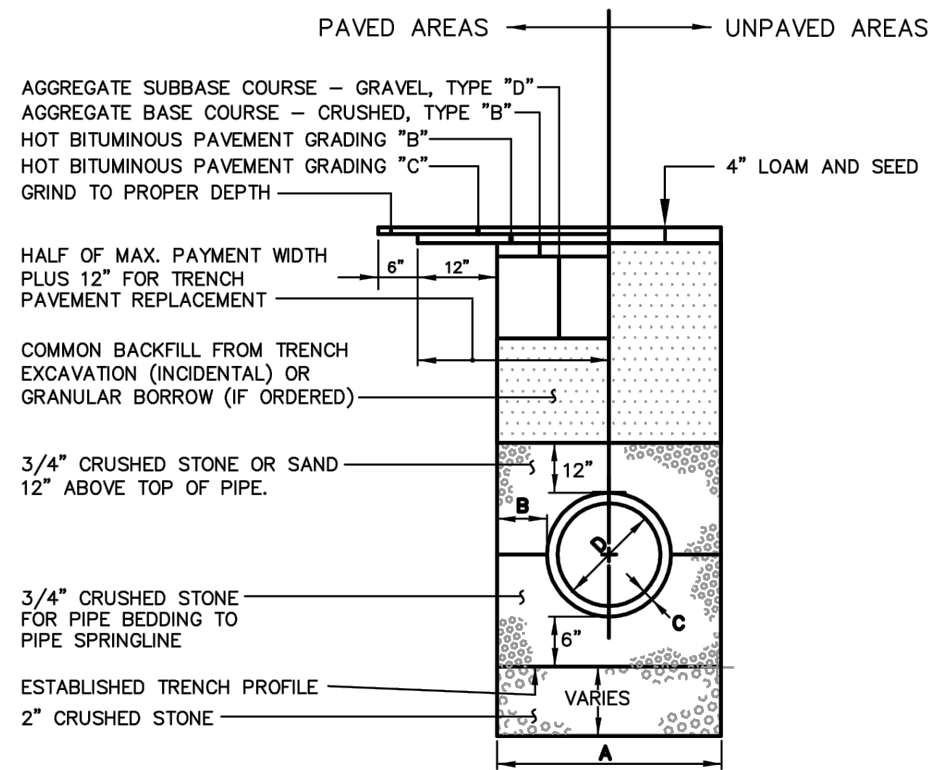
**(F) PLASTIC PIPE CONNECTION METHODS 1 & 2**  
N.T.S.

AS OBTAINED FROM THE CITY OF PORTLAND 'TECHNICAL MANUAL'



**(H) CROSSWALK STRIPING DETAIL**  
N.T.S.

NOTES:  
DEPTH OF BITUMINOUS PAVEMENT AND AGGREGATE COURSES SHALL BE DETERMINED BY STREET CLASSIFICATION.  
ANY ALTERNATE TRENCHING OR PAYMENT METHODS SHALL BE APPROVED IN ADVANCE BY THE CITY OF PORTLAND, DEPARTMENT OF PUBLIC SERVICES.



**TYPICAL PIPE TRENCH INSTALLATION**

NOT TO SCALE

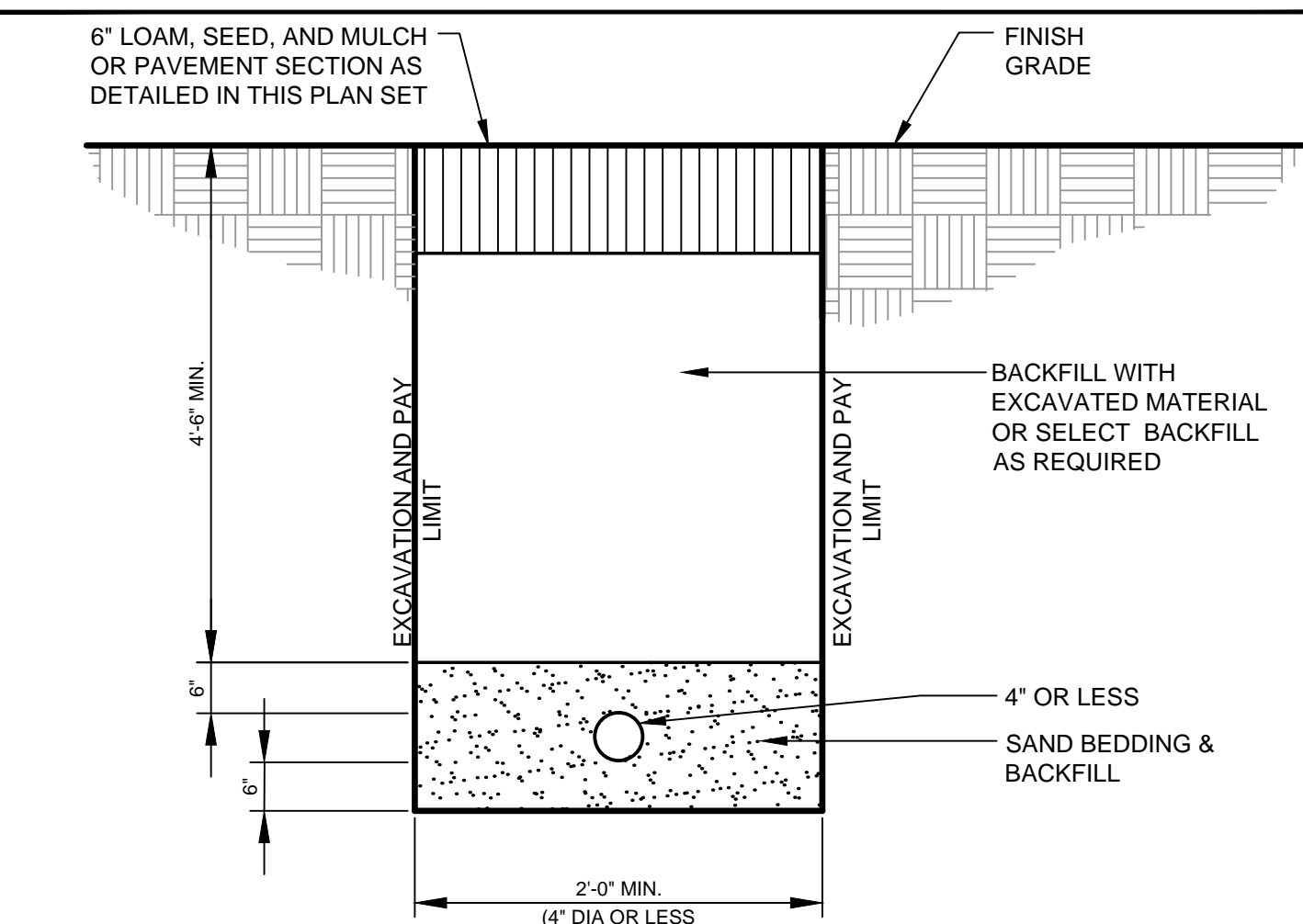
**NOTES**

1. ALTERNATIVE CONSTRUCTION METHODS OR PAYMENT METHODS SHALL BE APPROVED IN ADVANCE BY THE CITY.
2. IN PAVED AREAS, DEPTHS OF GRAVEL AND HOT MIX ASPHALT PAVEMENT SHALL MATCH THE GREATER OF EXISTING CONDITIONS OR THE REQUIREMENTS FOR THE CORRESPONDING STREET CLASSIFICATION.
3. DIMENSION B SHALL BE SUFFICIENT TO ALLOW CRUSHED STONE BEDDING TO BE PLACED AND COMPACTED UNDER THE HAUNCHES OF THE PIPE, BUT IN ALL CASES DIMENSION B SHALL BE AT LEAST 6".
4. DIMENSION A IS THE MAXIMUM WIDTH ALLOWED FOR CALCULATING PAY QUANTITIES UNDER GRANULAR BORROW, CRUSHED STONE, STRUCTURAL EARTH EXCAVATION, AND STRUCTURAL ROCK EXCAVATION. DIMENSION A SHALL BE BASED ON PIPE DIAMETER D, AS SET FORTH IN THE FOLLOWING TABLE.

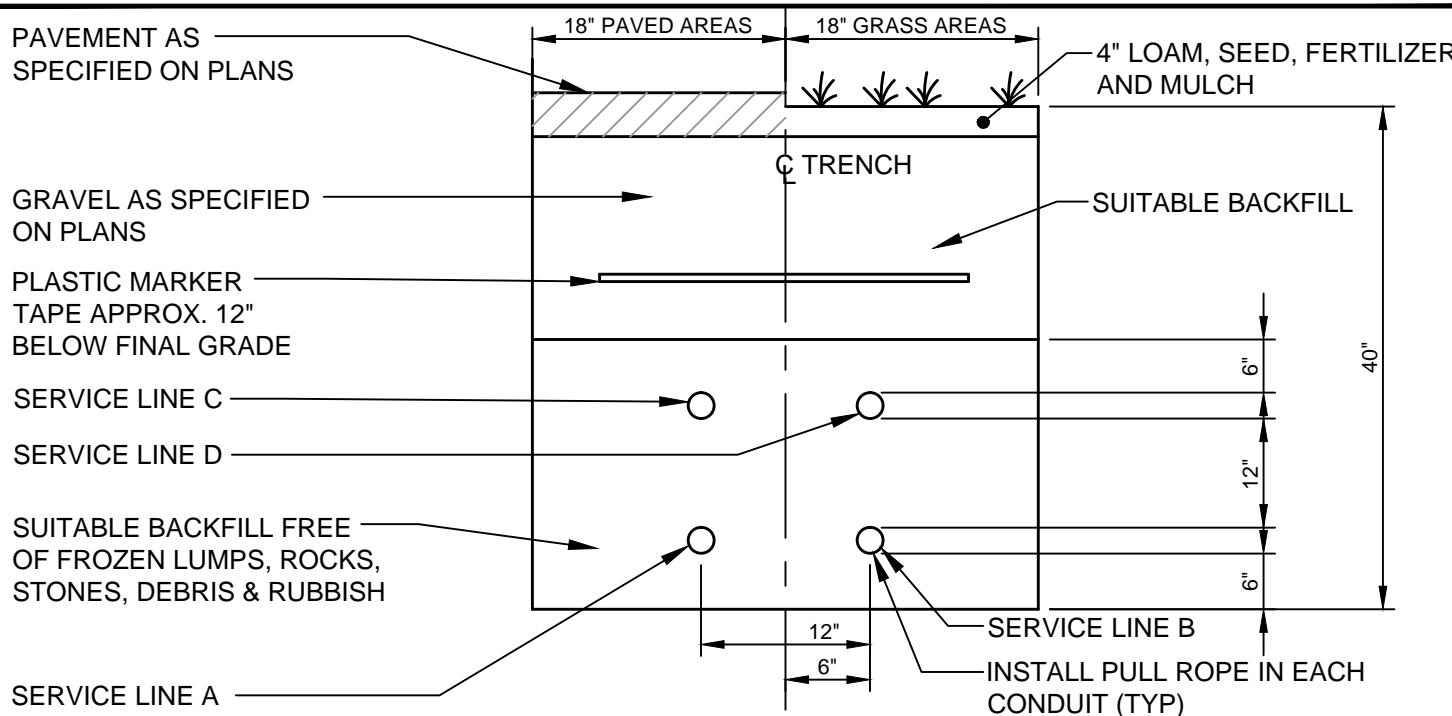
PIPE DIAMETER, D (INCHES)	MAX. TRENCH WIDTH, A (FEET)
4	4.0
6	4.0
8	4.0
10	5.0
12	5.0
15	5.0
18	5.0
21	5.0
24	6.0
27	6.0
30	6.0
36	7.0
42	7.0
48	7.0

**(B) TYPICAL PIPE TRENCH INSTALLATION AND NOTES**  
N.T.S.

AS OBTAINED FROM THE CITY OF PORTLAND 'TECHNICAL MANUAL'



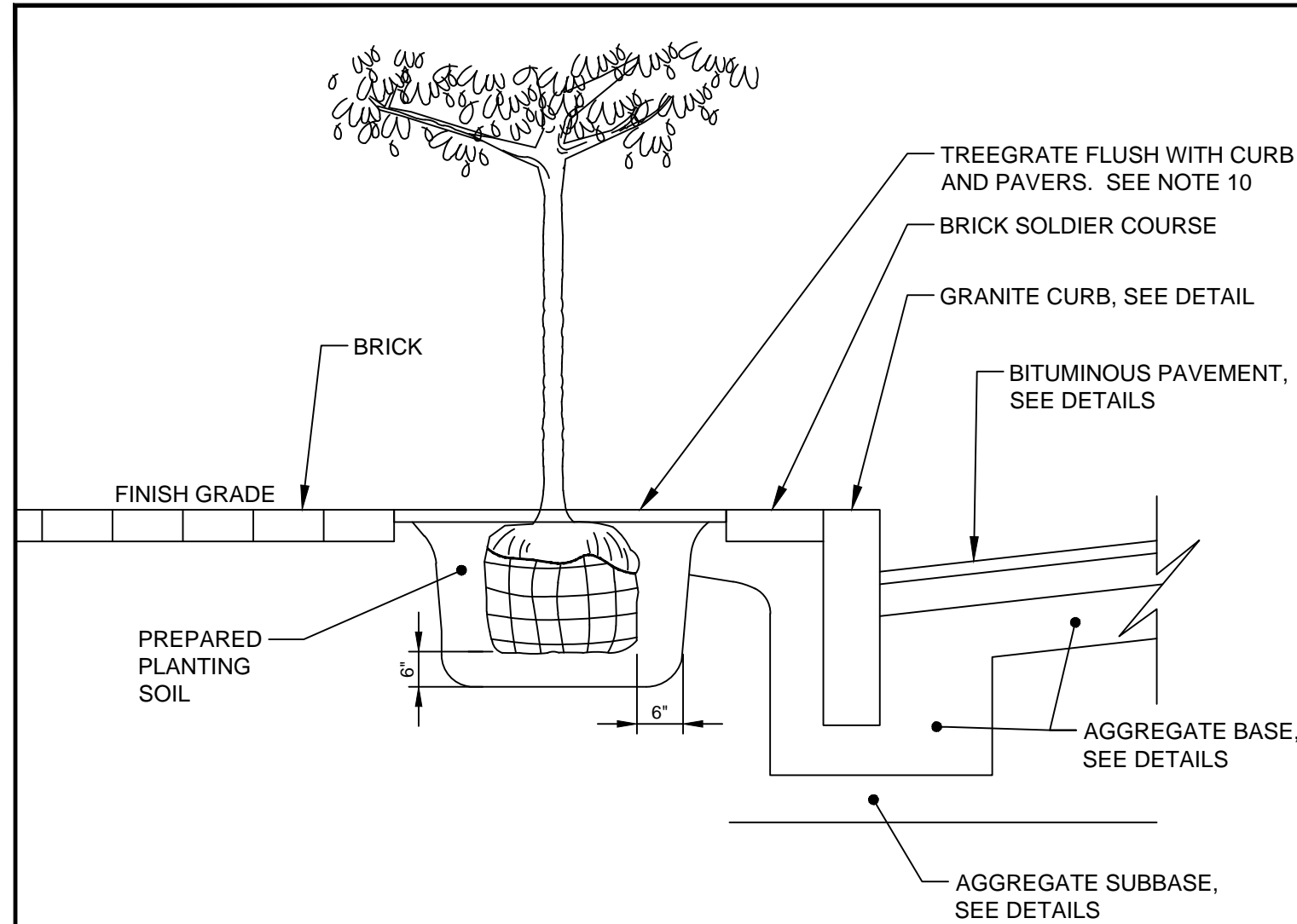
**(D) WATER SERVICE TRENCH DETAIL**  
N.T.S.



SERVICE	CONDUIT SIZE	CONDUIT TYPE		UTILITY	REMARKS
		GRASS AREAS	PAVED AREAS		
A	2-5"	SCHEDULE 40 PVC ELECTRICAL GRADE	RIGID GALVANIZED STEEL, ASTM A120	POWER	SEE NOTE
B	2-4"	SCHEDULE 40 PVC	RIGID GALVANIZED STEEL, ASTM A120	TELEPHONE	SEE NOTE
C	2-4"	SCHEDULE 40 PVC	RIGID GALVANIZED STEEL, ASTM A120	COMMUNICATION	SEE NOTE
D	2-4"	SCHEDULE 40 PVC	RIGID GALVANIZED STEEL, ASTM A120	SPARES	SEE NOTE

- NOTES:  
1. ONE CONDUIT CAPPED FOR SPARE, PROVIDE GALVANIZED STEEL LONG SWEEP AT RISER POLE AND EXTEND GALVANIZED CONDUIT TO 10" ABOVE GRADE AT POLE WITH STAND-OFF BRACKETS. COORDINATE WITH ELECTRICAL SITE PLANS BY BENNETT ENGINEERING.  
2. IN CITY RIGHT OF WAY, CONDUITS TO HAVE 36" MIN. COVER AND BE ENCASED WITH MIN. 3" CONCRETE ON ALL SIDES.

**(E) UTILITY TRENCH - PRIMARY ELEC., TEL. & COMM.**  
N.T.S.



**(G) TREE PLANTING DETAIL & LANDSCAPE NOTES**  
N.T.S.

**LANDSCAPE NOTES**

1. THE LANDSCAPE CONTRACTOR SHALL BE ADVISED OF THE EXISTENCE OF UNDERGROUND UTILITIES. CONTRACTOR SHALL VERIFY UTILITIES PRIOR TO COMMENCING DIGGING OPERATIONS.
2. THE CONTRACTOR SHALL BE RESPONSIBLE FOR REPAIRING ANY UTILITIES, WALKS, PAVING, CURBING, ETC. DAMAGED IN PERFORMANCE OF THIS JOB AT NO COST TO THE OWNER.
3. ALL PLANT MATERIALS SHALL MEET THE SPECIFICATIONS OF THE 'AMERICAN STANDARDS FOR NURSERY STOCK', BY THE AMERICAN NURSERYMAN'S ASSOCIATION, LATEST EDITION.
4. ALL PLANTING SHALL BE COMPLETED IN ACCORDANCE WITH ACCEPTABLE HORTICULTURAL PRACTICES, INCLUDING PROPER BED PREPARATION, SOIL MIX, PRUNING, STAKING, WRAPPING AND OTHER MAINTENANCE UNTIL ACCEPTED BY THE OWNER.
5. ALL GRASS, DEBRIS AND OTHER EXTRANEIOUS MATERIALS SHALL BE REMOVED FROM THE PLANTING AREAS PRIOR TO INSTALLATION OF PLANT MATERIALS.
6. ALL PLANTS SHALL BE LOCATED IN ACCORDANCE WITH THE PLANS. ANY DEVIATION FROM THESE PLANS SHALL BE APPROVED BY THE OWNER AND LANDSCAPE ARCHITECT PRIOR TO PLANTING.
7. CONTRACTOR SHALL SUPPLY QUANTITIES OF PLANTS SUFFICIENT TO COMPLETE THE WORK INDICATED ON THE PLAN. ANY DISCREPANCY BETWEEN THE PLANT LIST AND PLAN SHALL NOT ENTITLE THE CONTRACTOR TO ADDITIONAL REMUNERATION.
8. NO LANDSCAPING SHALL BE INSTALLED UNTIL FINAL GRADING AND CONSTRUCTION HAS BEEN COMPLETED IN THE IMMEDIATE AREA.
9. PLANTING SOIL MIX SHALL CONSIST OF FOUR PARTS TOPSOIL, TWO PARTS COMPOST AND ONE PART PERLITE. ROTOTILL TO A DEPTH OF 8" MINIMUM.
10. TREE GRATE AND FRAME SHALL BE CAST IRON, R-8808-103 RECTANGULAR TREE GRATE WITH 4 FOOT HIGH TYPE 'C' TREE GUARDS FROM NEENAH FOUNDRY AND INSTALLED PER MANUFACTURER'S RECOMMENDATION.

PRELIMINARY - NOT FOR CONSTRUCTION

REV	DATE	DESCRIPTION
5	04.15.15	REVISED PER STAFF COMMENTS & RESUBMITTED TO CITY
4	02.06.15	SUBMITTED FINAL SITE PLAN APPLICATION TO CITY
3	07.08.14	REVISED PER ENGINEERING PEER REVIEW COMMENTS AND RESUBMITTED TO CITY
2	06.12.14	REVISED PER PLANNING REVIEW STAFF COMMENTS AND RESUBMITTED TO CITY
1	05.05.14	SUBMITTED TO CITY

STATE OF MAINE  
P.E. JOSEPH A. LAVERRIERE  
LICENSED PROFESSIONAL ENGINEER  
LIC. #7417

PROJECT  
185 FORE STREET  
PORTLAND, MAINE  
SHEET TITLE  
UTILITY &  
MISCELLANEOUS DETAILS  
CLIENT  
BATEMAN PARTNERS LLC

**FST** 100 YEARS  
**FAY, SPOFFORD & THORNDIKE**  
ENGINEERS - PLANNERS - SCIENTISTS  
778 MAIN ST, SUITE B, SOUTH PORTLAND, ME 04106  
DRAWN: CDD DATE: MAY 2014  
DESIGNED: JAL SCALE: N.T.S.  
CHECKED: JAL JOB NO. SP-M150  
FILE NAME: SP-M150-DET  
SHEET C-6.2

R:\SP-M150-185 Fore St\185 Fore St\185 Fore St - DET.dwg, C-6.2 FORE ST, 4/14/2015 5:01:47 PM, dube, c. 1:1