

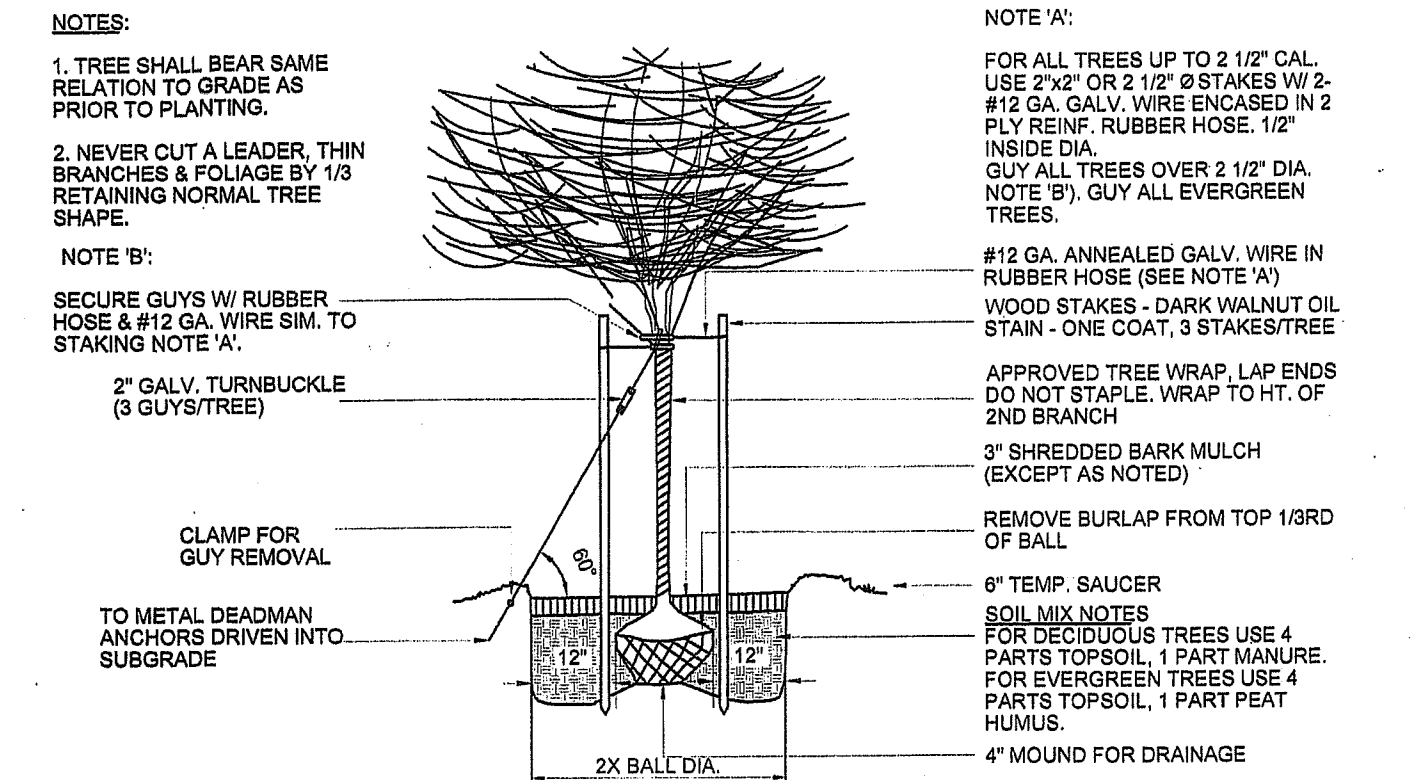
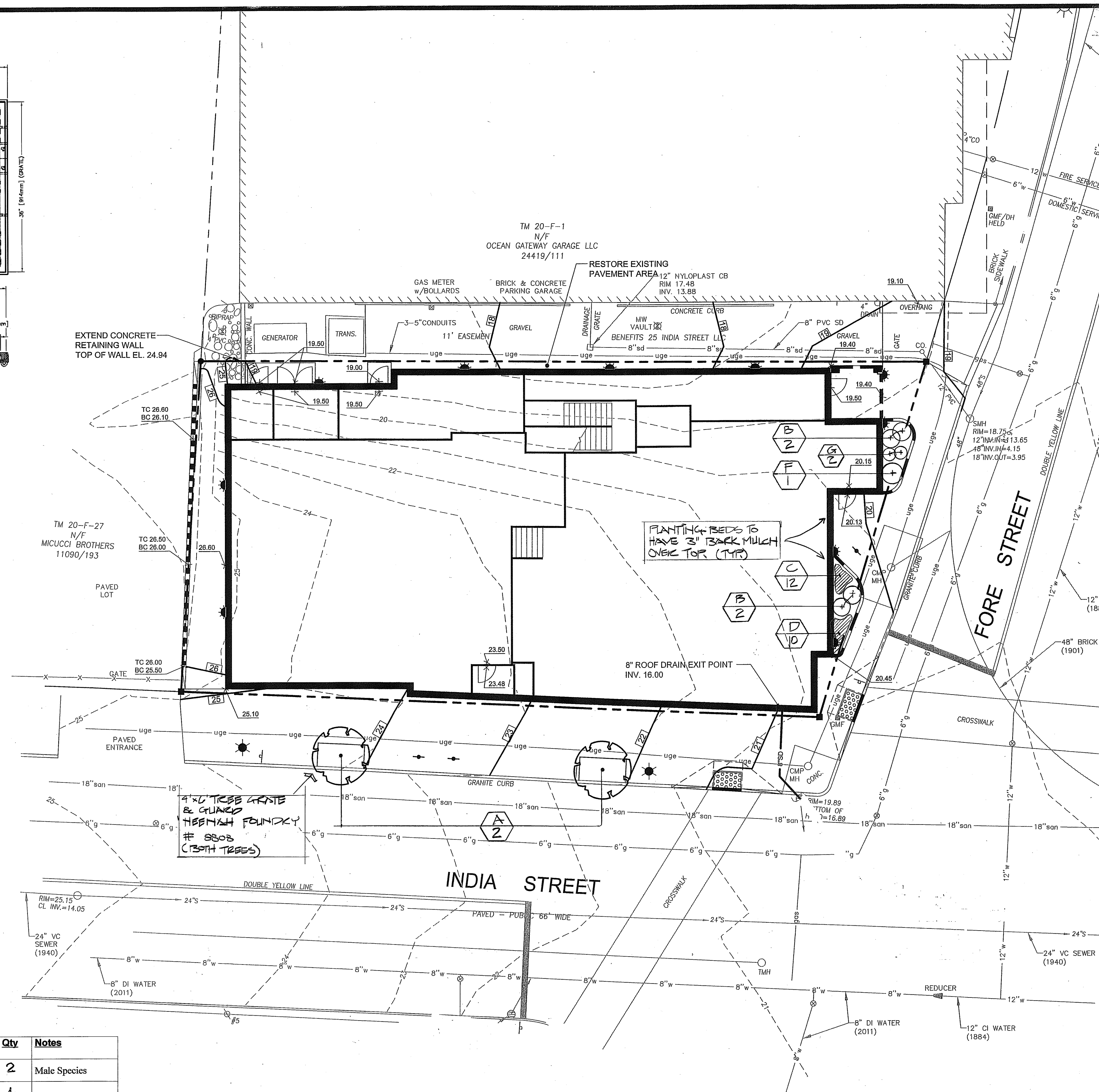
**TREE GRATE DETAIL**  
NEENAH FOUNDRY CO. #NF-8808 103



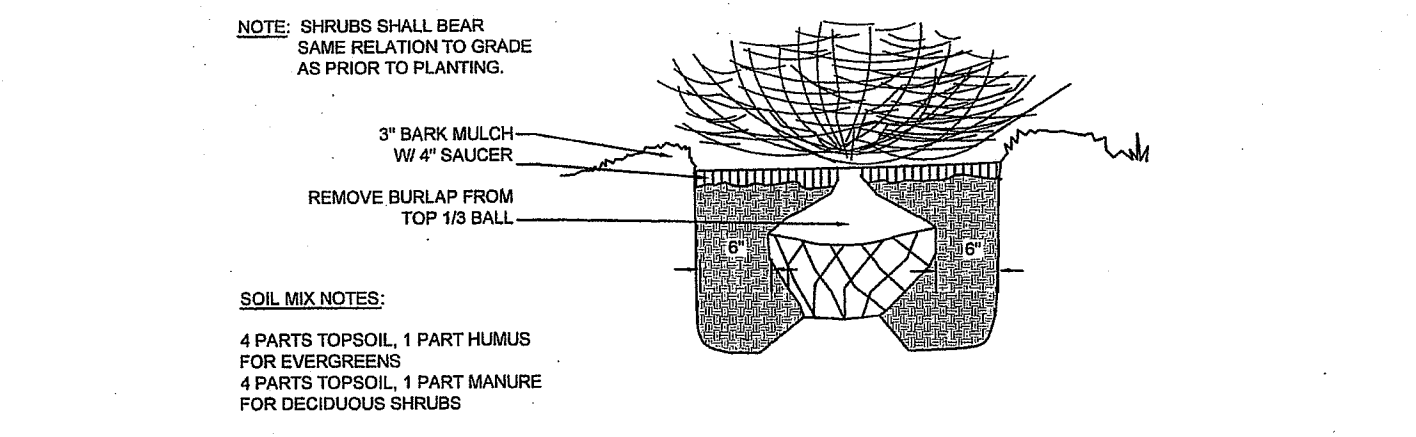
**TREE GRATE & GUARD**  
SIMILAR EXISTING ON MIDDLE STREET

**PLANT LIST**

Key	Common & Botanical Name	Size	Root	Qty	Notes
A.	Magyar Ginkgo Ginkgo Biloba 'Magyar'	2 1/2" Cal.	B&B	2	Male Species
B.	Northern Bayberry M. Pennsylvanica	18" Ht.	Cont.	4	
C.	Daylily Varieties Hemerocallis 'Condilla'	-----	Cont.	12	
D.	Daylily: 'Westfield Wind'	-----	Cont.	10	
E.	Daylily: 'Mystical Rainbow'	-----	Cont.	-	
F.	Juniper J. Communis 'Blueberry delight'	-----	#2	1	
G.	Switch Grass P. Verigatum 'Shenandoah'	-----	#2	2	
PB.	Planting Beds for Assorted Perennials @ 15" deep - prepared planting soil				



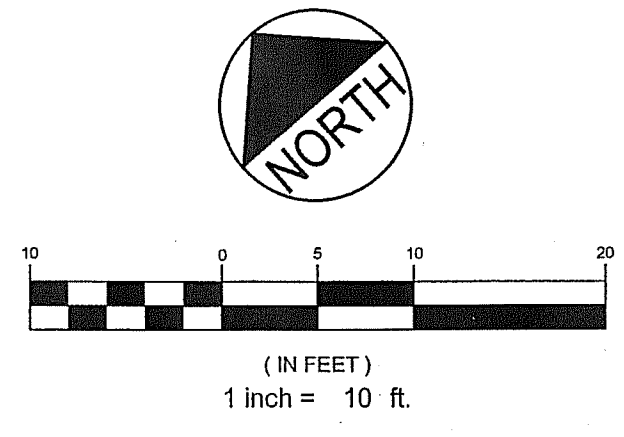
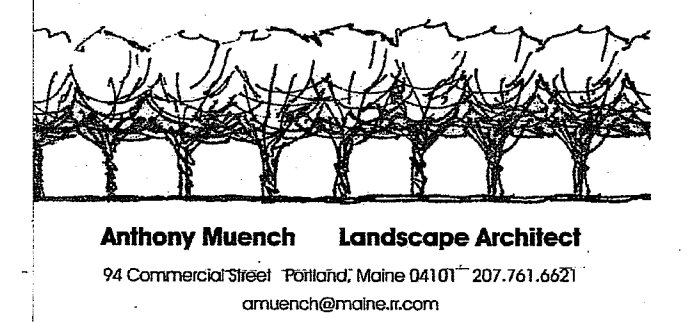
**PLANTING DETAIL - TREE**  
N.T.S.



**PLANTING DETAIL - SHRUB**  
N.T.S.

**PLANTING NOTES**

- The contractor shall supply all plants in quantities sufficient to complete the work shown on plan. Any discrepancies between quantities shown on plant list and those required by this drawing shall not entitle contractor to additional remuneration.
- Any plant substitutions must be approved by the owner and the City of Portland.
- Any tree or shrub which comes over or under any utility shall be relocated on the site by the landscape architect.
- All lawn areas to have 6" of topsoil unless noted otherwise.
- All trees and shrubs shall be placed in the designated areas as shown on the plan and before planting shall be approved by the landscape architect.
- The contractor shall relocate any tree or shrub as directed by the landscape architect.
- All plant material installed shall meet the specifications of the American Standard for Nursery Stock (latest edition) as set forth by the American Association of Nurserymen.
- The landscape contractor shall replace or repair to original condition any and all utilities, paving, curbing, etc., damaged as a result of their operations at no additional cost to the owner.



REV	DATE	DESCRIPTION
6-17-14		LANDSCAPE PLAN

PROJECT  
**185 FORE STREET  
PORTLAND, MAINE**

SHEET TITLE  
**LANDSCAPE PLAN**

CLIENT  
**BATEMAN PARTNERS LLC**

**FST** **FAY, SPOFFORD & THORNDIKE**  
ENGINEERS - PLANNERS - SCIENTISTS  
778 MAIN ST, SUITE 8, SOUTH PORTLAND, ME 04106

SHEET **L-1.0**

**PRELIMINARY - NOT FOR CONSTRUCTION**