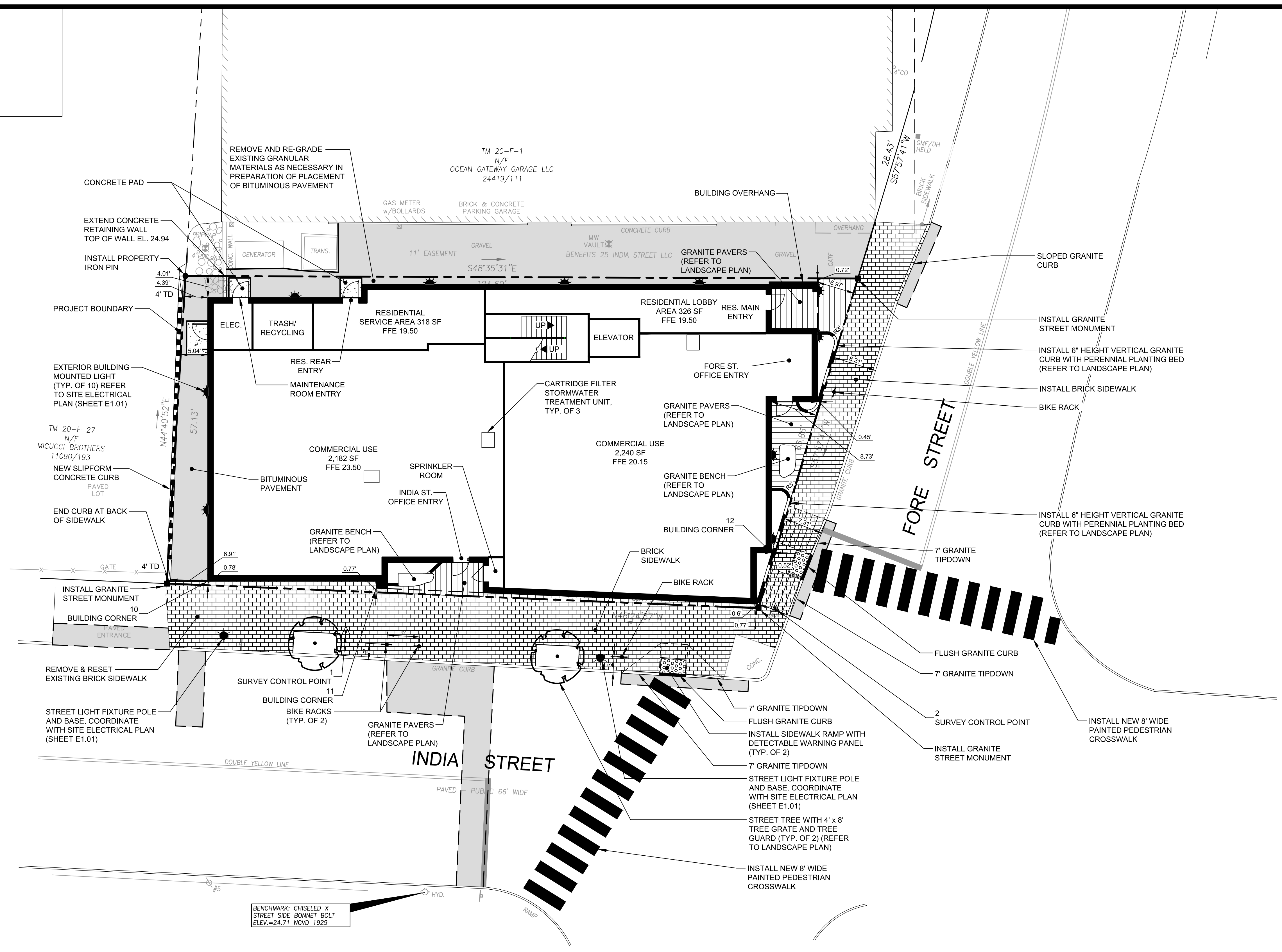


R:\SP-M150-India & Middle Sts\Cadd\Permit Set\dwg\SP-M150-SITE LAYOUT.dwg, C-3.0 FORE, 4/15/2015 11:15:25 AM, dube_c, 1:1

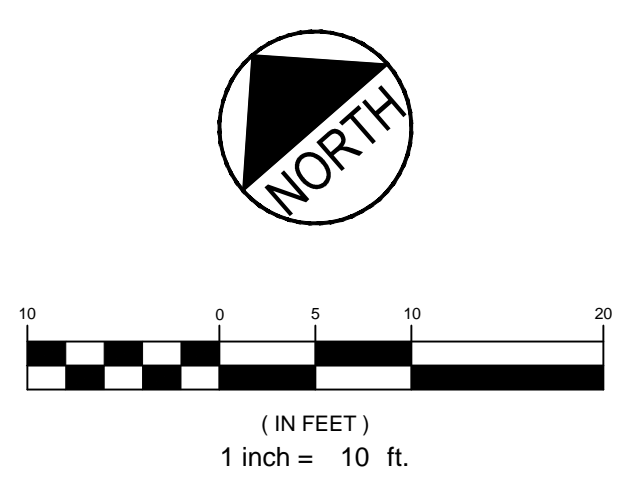


LEGEND

- VERTICAL GRANITE CURB
- SLOPED GRANITE CURB
- SLIPFORM CONCRETE CURB
- CURB TIPDOWN
- BRICK SIDEWALK
- BITUMINOUS PAVEMENT
- CONCRETE PAD

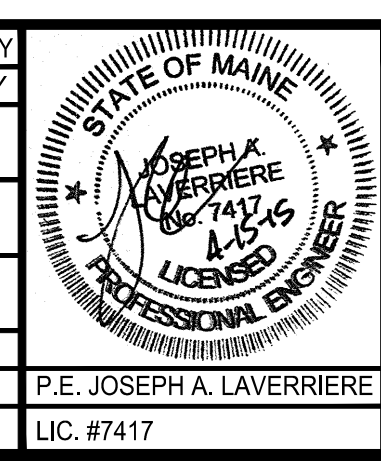
POINT TABLE

ID	RAW DESCRIPTION	NORTHING	EASTING
1	SURVEY CONTROL POINT	301334.53	2930857.55
2	SURVEY CONTROL POINT	301285.27	2930920.25
10	BUILDING CORNER	301358.44	2930844.56
11	BUILDING CORNER	301336.93	2930867.14
12	BUILDING CORNER	301293.62	2930926.58



PRELIMINARY - NOT FOR CONSTRUCTION

REV	DATE	DESCRIPTION
6	04.15.15	REVISED PER STAFF COMMENTS & RESUBMITTED TO CITY
5	02.06.15	SUBMITTED FINAL SITE PLAN APPLICATION TO CITY
4	07.22.14	REVISED BUILDING ENTRANCES, LANDSCAPE PLANTERS AND CROSSWALKS
3	07.08.14	REVISED PER ENGINEERING PEER REVIEW COMMENTS AND RESUBMITTED TO CITY
2	06.12.14	REVISED PER PLANNING REVIEW STAFF COMMENTS AND RESUBMITTED TO CITY
1	05.05.14	SUBMITTED TO CITY



PROJECT
**185 FORE STREET
PORTLAND, MAINE**

SHEET TITLE
SITE LAYOUT PLAN

CLIENT
BATEMAN PARTNERS LLC

FST **FAY, SPOFFORD & THORNDIKE**
ENGINEERS · PLANNERS · SCIENTISTS
778 MAIN ST, SUITE 8, SOUTH PORTLAND, ME 04106

DRAWN: CDD DATE: MAY 2014
DESIGNED: JAL SCALE: 1" = 10'
CHECKED: JAL JOB NO. SP-M150
FILE NAME: SP-M150-SITE LAYOUT
SHEET **C-3.0**

R:\SP-M150-India & Middle Sts\Cadd\Permit Set\dwg\SP-M150-SITE LAYOUT.dwg, dube_c 4/15/2015 11:15 AM