

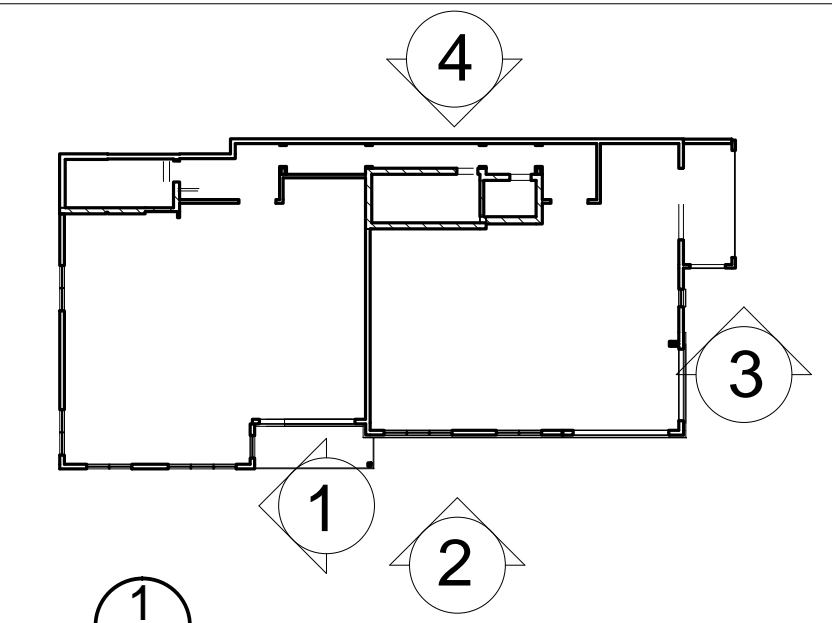
1 RECESSED ELEV.

1/8" = 1'-0" 0 2'-0" 4'-0" 8'-0" 16'-0"

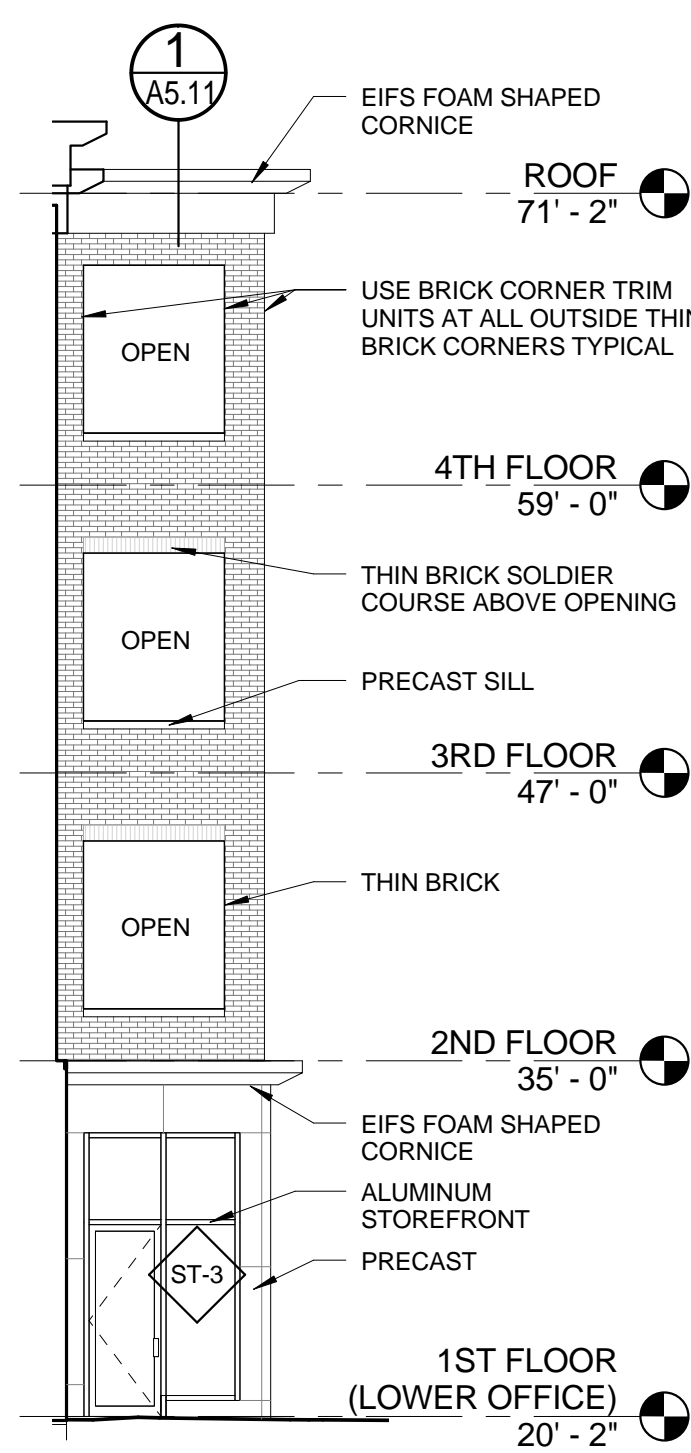


2 SOUTH ELEVATION

1/8" = 1'-0" 0 2'-0" 4'-0" 8'-0" 16'-0"

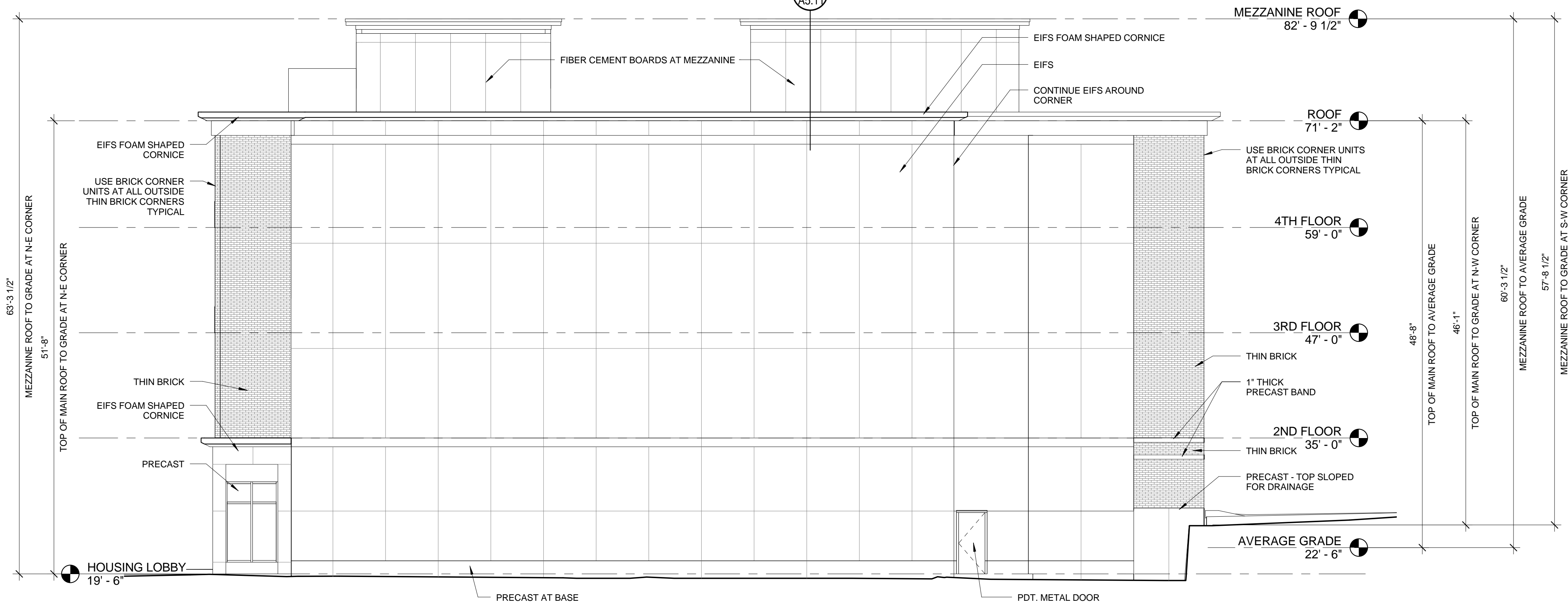


GENERAL NOTES:  
 1. AVERAGE GRADE BY DEFINITION: 4 CORNER AVERAGE GRADE - SW 25.10' + SE 20.45' + SW 25.00' + 19.48' = 90.0' / 4 = 22'-6" (AVERAGE GRADE)  
 2. BUILDING HEIGHT: THE VERTICAL MEASUREMENT AT THE FOUR CORNERS FROM GRADE TO HIGHEST POINT OF MEZZANINE ROOF BEAM - SW 57'-7 1/2" + SE 62'-4 3/4" + NW 57'-9 1/2" + NE 63'-4" = 241'-2 1/4" = 60'-3 1/2" (BUILDING HEIGHT)



3 RECESSED ELEV.

1/8" = 1'-0" 0 2'-0" 4'-0" 8'-0" 16'-0"



4 NORTH ELEVATION

1/8" = 1'-0" 0 2'-0" 4'-0" 8'-0" 16'-0"

Prepared For: **BATEMAN PARTNERS, L.L.C.**  
 470 FORE STREET  
 PORTLAND, ME 04101

Consultant: **ARCHETYPE architects**  
 48 Union Wharf Portland, Maine 04101  
 (207) 772-6022 Fax (207) 772-4056

Architect: **ARCHETYPE architects**  
 48 Union Wharf Portland, Maine 04101  
 (207) 772-6022 Fax (207) 772-4056

Project: **185 FORE STREET**  
 185 Fore Street, Portland, Maine

Revisions:

Date: **1 MAY, 2014**

Scale: **As indicated**

**BUILDING ELEVATIONS**

**A2.01**