

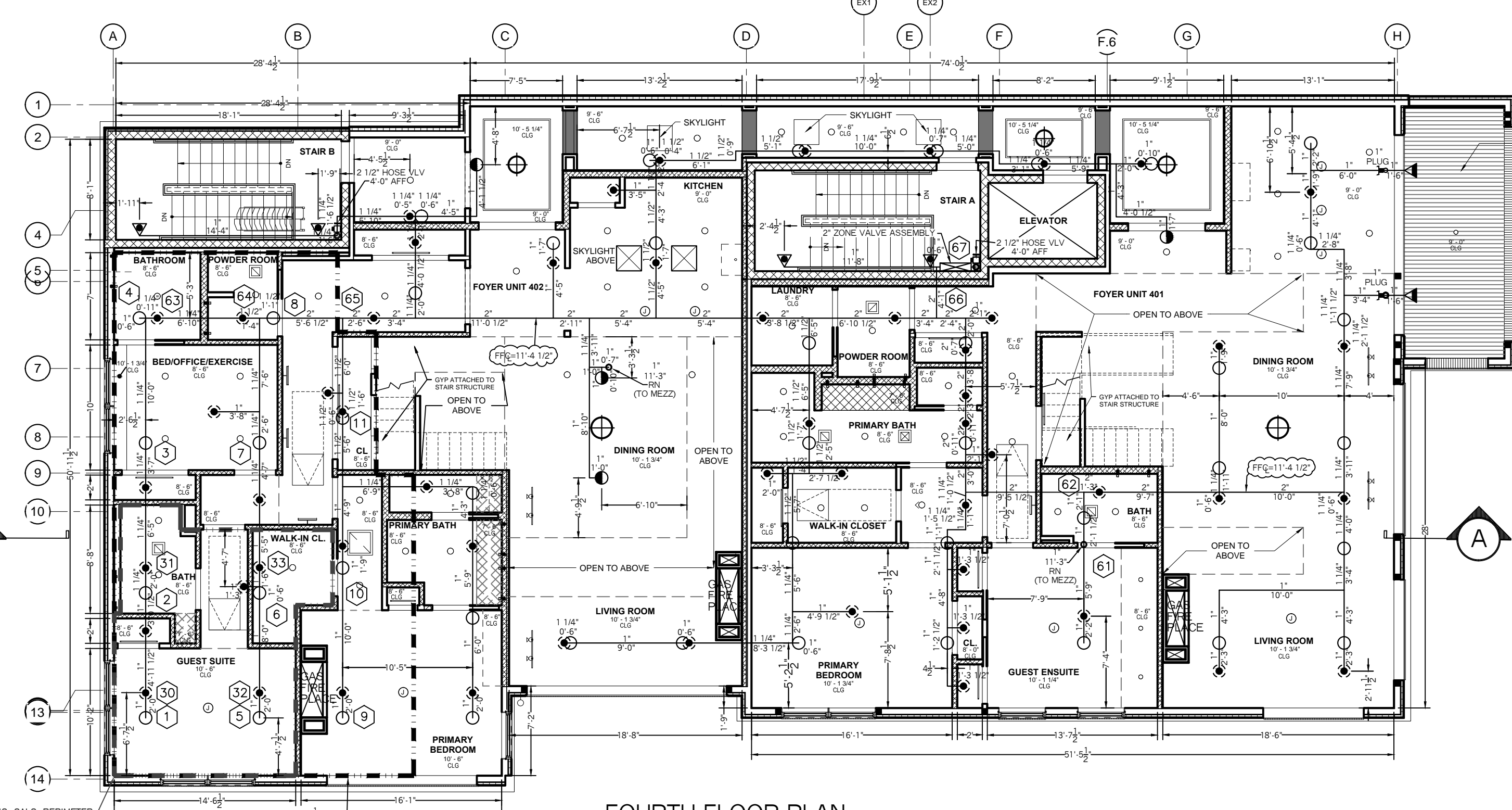
SECOND FLOOR PLAN
SCALE: 1/8" = 1'-0"
FLOOR AREA = 5,169.0 SF
FF ELEV: 33.9'

SPRINKLER HEAD INFORMATION, THIS FLOOR ONLY

QTY	SIZE	ORIFICE	K-FACTOR	DESCRIPTION	MODEL	TEMP	ESCUOTHEON	SYMBOL
61	1/2"	7/16"	4.9	VIKING RES. WHITE CONCEALED PEND	VK457	155	RECESSED	☉
54	1/2"	1/2"	5.6	VIKING "QR" BRASS UPRIGHT	VK300	155	NONE	○
2	1/2"	7/16"	4.0	VIKING RES. HORIZ. SIDEWALL	VK486	155	RECESSED	◐
2	1/2"	1/2"	5.6	VIKING "QR" DRY HORIZ. SIDEWALL	VK178	155	STANDARD	◑

TOTAL HEADS=119

☉ = BRASS UPRIGHT ABOVE WHITE RECESSED PENDENT, INCLUDED IN COUNTS ABOVE



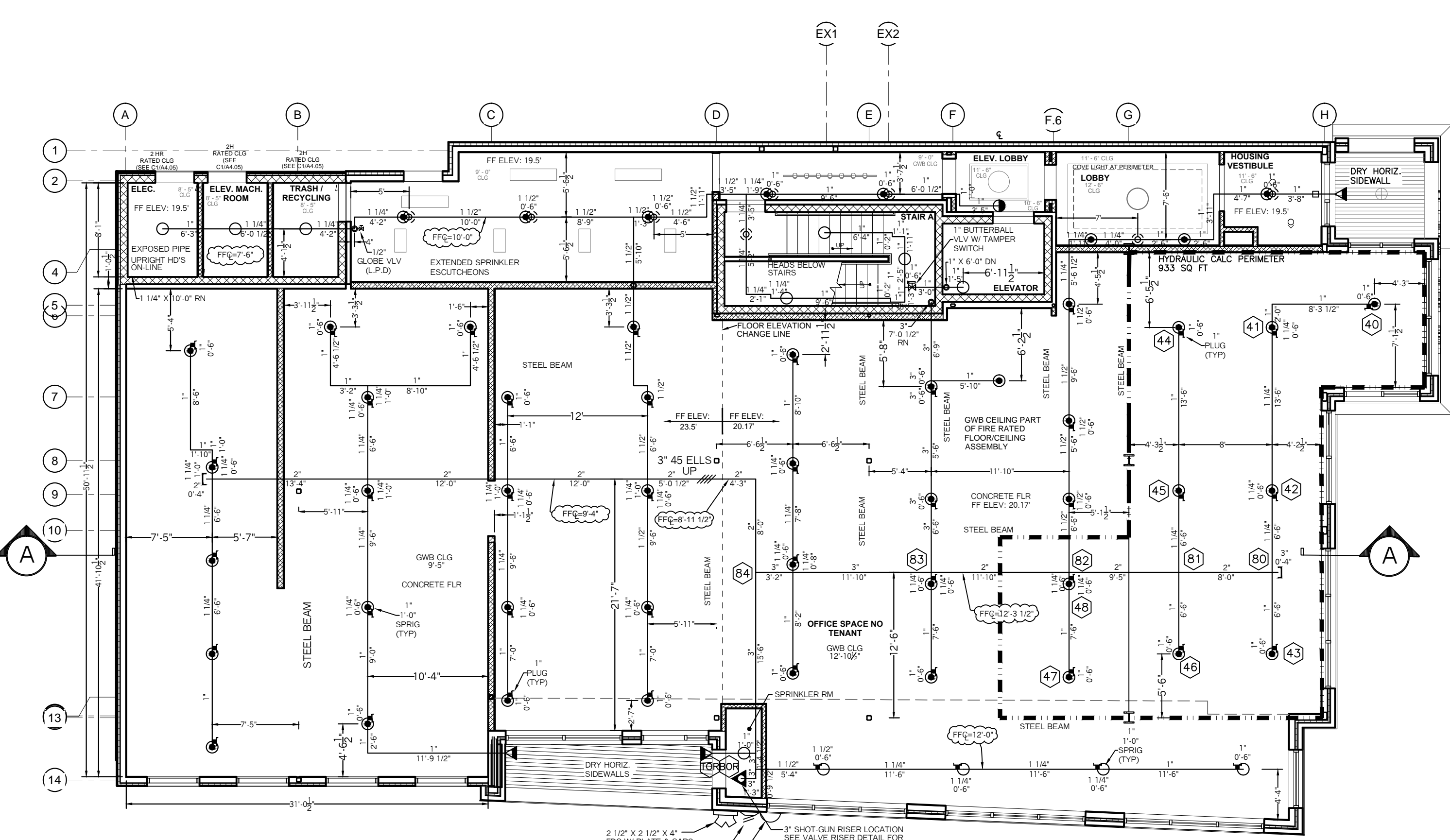
FOURTH FLOOR PLAN
SCALE: 1/8" = 1'-0"
FLOOR AREA = 4,991.0 SF
FF ELEV: 39.0'

SPRINKLER HEAD INFORMATION, THIS FLOOR ONLY

QTY	SIZE	ORIFICE	K-FACTOR	DESCRIPTION	MODEL	TEMP	ESCUOTHEON	SYMBOL
53	1/2"	7/16"	4.9	VIKING RES. WHITE CONCEALED PEND	VK457	155	RECESSED	☉
48	1/2"	1/2"	5.6	VIKING "QR" BRASS UPRIGHT	VK300	155	NONE	○
3	1/2"	7/16"	4.0	VIKING FREEDOM HORIZ. SIDEWALL	VK486	155	RECESSED	◐
2	1/2"	1/2"	5.6	VIKING "QR" DRY HORIZ. SIDEWALL	VK178	155	STANDARD	◑

TOTAL HEADS=106

☉ = BRASS UPRIGHT ABOVE WHITE RECESSED PENDENT, INCLUDED IN COUNTS ABOVE



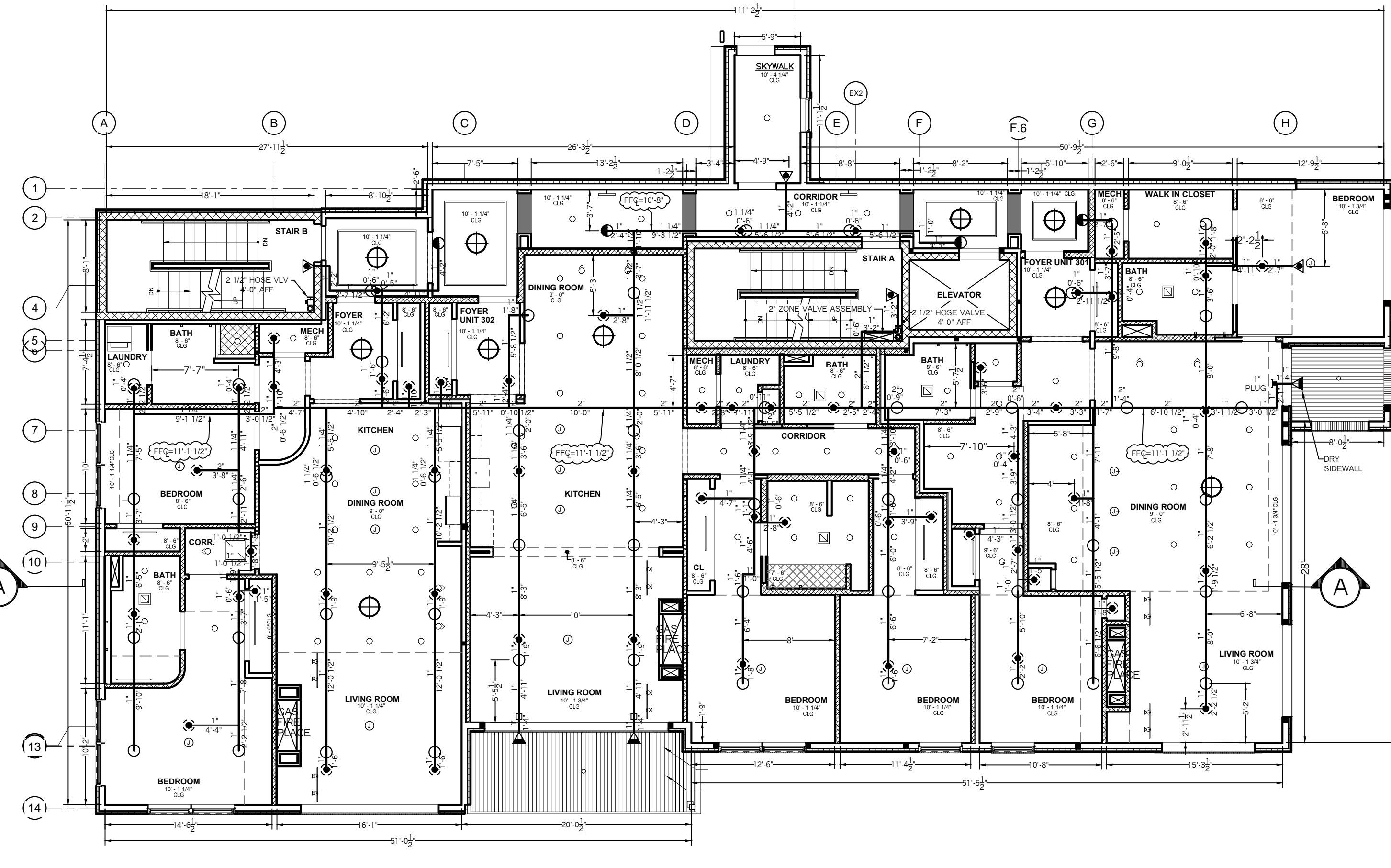
FIRST FLOOR PLAN
SCALE: 1/8" = 1'-0"
FLOOR AREA = 5,549.0 SF
FF ELEV: 19.5', 20.17' & 23.5'

SPRINKLER HEAD INFORMATION, THIS FLOOR ONLY

QTY	SIZE	ORIFICE	K-FACTOR	DESCRIPTION	MODEL	TEMP	ESCUOTHEON	SYMBOL
9	1/2"	1/2"	5.6	VIKING WHITE OR PENDENT	VK302	155	RECESSED	☉
12	1/2"	1/2"	5.6	VIKING "QR" BRASS UPRIGHT	VK300	200	NONE, ON LINE	○
3	1/2"	1/2"	5.6	VIKING "QR" DRY HORIZ. SIDEWALL	VK178	155	STANDARD	◑
49	1/2"	1/2"	5.6	VIKING "QR" BRASS UPRIGHT	VK300	200	NONE, ON SPRIG	☉

TOTAL HEADS=73

☉ = BRASS UPRIGHT ABOVE WHITE RECESSED PENDENT, INCLUDED IN COUNTS ABOVE



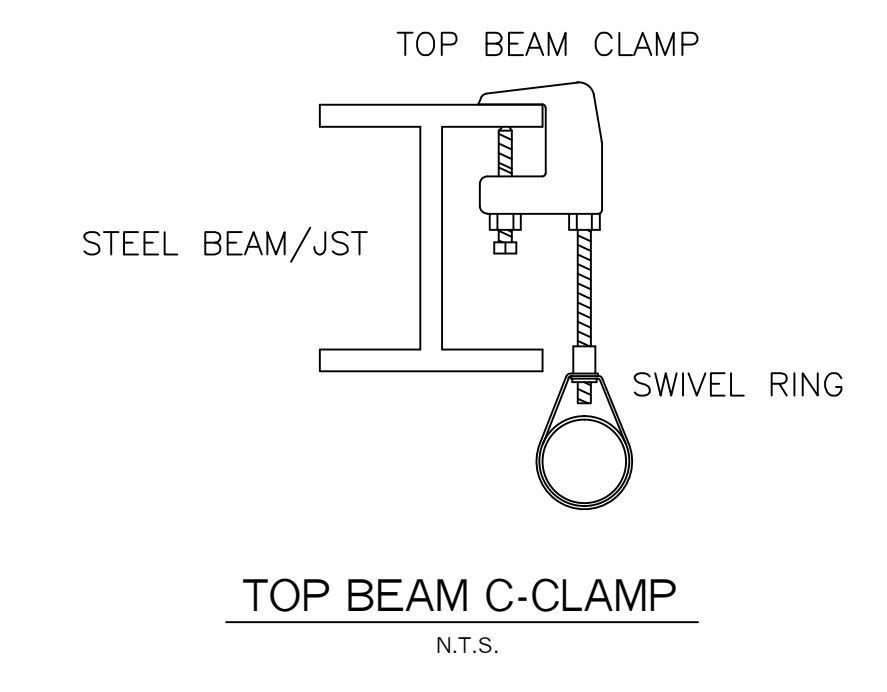
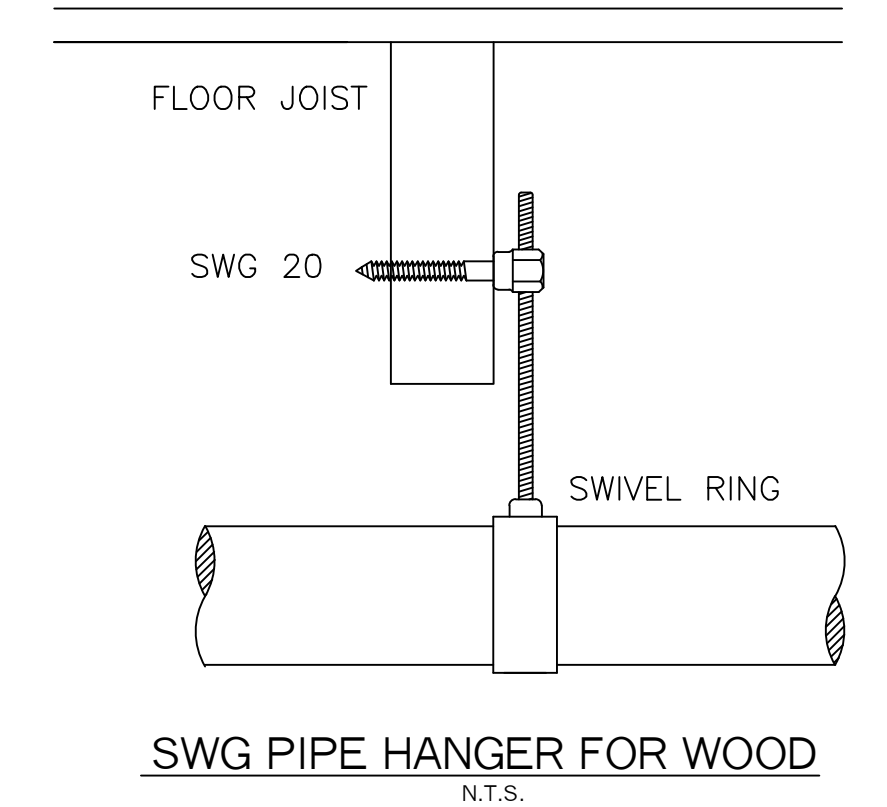
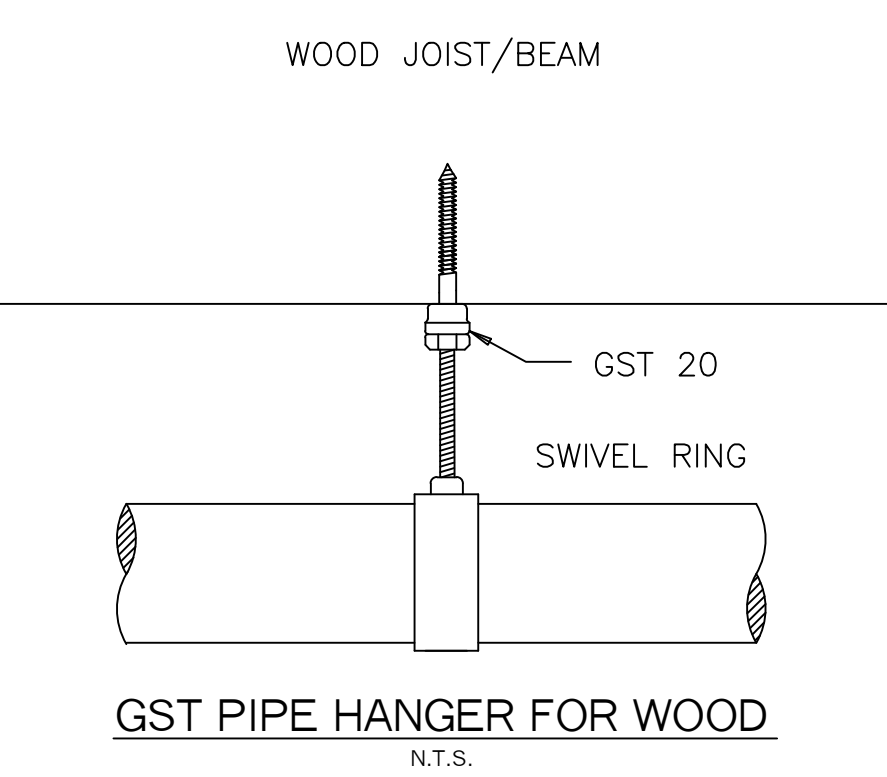
THIRD FLOOR PLAN
SCALE: 1/8" = 1'-0"
FLOOR AREA = 5,104.0 SF
FF ELEV: 47.0'

SPRINKLER HEAD INFORMATION, THIS FLOOR ONLY

QTY	SIZE	ORIFICE	K-FACTOR	DESCRIPTION	MODEL	TEMP	ESCUOTHEON	SYMBOL
17	1/2"	7/16"	4.9	VIKING RES. WHITE CONCEALED PEND	VK457	155	RECESSED	☉
52	1/2"	1/2"	5.6	VIKING "QR" BRASS UPRIGHT	VK300	155	NONE	○
4	1/2"	7/16"	4.0	VIKING FREEDOM HORIZ. SIDEWALL	VK486	155	RECESSED	◐
1	1/2"	1/2"	5.6	VIKING "QR" DRY HORIZ. SIDEWALL	VK178	155	STANDARD	◑

TOTAL HEADS=114

☉ = BRASS UPRIGHT ABOVE WHITE RECESSED PENDENT, INCLUDED IN COUNTS ABOVE



SYSTEM GENERAL NOTES:

- A WET PIPE SYSTEM OF AUTOMATIC SPRINKLERS DESIGNED, INSTALLED AND TESTED PER NFPA 13 (2007 EDITION)
- THE FIRST LEVEL TO BE COMMERCIAL SPACE. THE 2ND, 3RD, 4TH AND MEZZANINE LEVELS ARE TO BE RESIDENTIAL OCCUPANCIES.
- NEW 6" DI CL FIRE SPRINKLER WATER LINE TO BE INSTALLED, TESTED AND FLUSHED BY OTHER'S IN ACCORDANCE WITH NFPA 24 AND LOCAL CODES. 6" DI CL SPIGOT IN THE SPRINKLER ROOM ON THE FIRST LEVEL.
- RESIDENTIAL FIRE PROTECTION TO START AT 6" UNI-FLANGE AT THE END OF THE 6" SPIGOT IN THE SPRINKLER ROOM ON THE FIRST LEVEL.
- 4" SHOT-GUN VALVE RISER WITH A DOUBLE CHECK BACKFLOW PREVENTER.
- MAIN PIPING (2"-4") TO BE SCHEDULE 10 BLACK STEEL WITH GROOVED ENDS AND DUCTILE IRON GROOVED FITTINGS.
- LINE PIPING (1"-1 1/2") TO BE SCHEDULE 40 BLACK STEEL WITH THREADED ENDS AND THREADED C.I. FITTINGS.
- WHITE CONCEALED RESIDENTIAL PENDENT HEADS WILL BE INSTALLED IN ALL THE UNITS CEILINGS AND WHITE RECESSED PENDENT HEADS WILL BE INSTALLED IN ALL OTHER SPACES.
- BRASS UPRIGHT HEADS WILL BE INSTALLED IN ALL CONCEALED SPACES

HYDRAULIC CALCULATION INFORMATION
LOCATION: 1ST FLR - CONCEALED SPACE
BASIS OF DESIGN: NFPA 13, 2007 EDITION
DENSITY AREA OF COVERAGE
.1 933 SQ FT
OCCUPANCY: LIGHT HAZARD
SPRINKLERS: TOTAL THREAD TEMP
9 1/2" 200
SYSTEM DEMAND AT BASE OF RISER:
PRESSURE FLOW HOSE
27.38 162.21 100
SAFETY MARGIN: 69.37 PSI

HYDRAULIC CALCULATION INFORMATION
LOCATION: 4TH FLR - CONCEALED SPACE
BASIS OF DESIGN: NFPA 13, 2007 EDITION
DENSITY AREA OF COVERAGE
.1 931 SQ FT
OCCUPANCY: LIGHT HAZARD
SPRINKLERS: TOTAL THREAD TEMP
11 1/2" 200
SYSTEM DEMAND AT BASE OF RISER:
PRESSURE FLOW HOSE
83.54 305.74 100
SAFETY MARGIN: 12.97 PSI

SYSTEM SYMBOL LEGEND:

- ☉ = ZONE VALVE ASSEMBLY
- ◐ = HOSE VALVE
- ◑ = WET SHOT-GUN RISER
- = HANGER
- ◑ = HYDRAULIC CALC REF PT
- ◑ = DRAIN VALVE
- ◑ = PLUG

PROJECT NAME: 185 FORE STREET 185 FORE STREET PORTLAND, ME. 04101	FIRE SPRINKLER PLANS AND DETAILS REQUIRED APPROVALS: STATE FIRE MARSHALS OFFICE LOCAL FIRE DEPARTMENT OWNER	RESIDENTIAL FIRE PROTECTION, LLC PROTECTION, LLC
CONTRACT WITH: PORTLAND BUILDERS 70 CENTER ST., SUITE 304 PORTLAND, ME. 04101 PH: (207) 879-0118	DRAWN BY: TYP NICET III CERTIFICATION # 100854 CHECKED BY: SJC NICET III (100854) CERTIFICATION # 78065 CONTRACTOR LICENSE #511 CONTRACTOR RMS #80	DATE: 4-29-2016 SCALE: 1/8" = 1'-0" CONTRACT NO. C16011 DRAWING NO. 1 OF 2
RESIDENTIAL FIRE PROTECTION 64 DAGGETT HILL ROAD, GREENE, MAINE 04236 PH: (207) 946-3473 FAX: (207) 946-3474		