

**HEMESPHERE DESIGN**

Architecture  
58 Fore Street  
Portland, ME 04101  
207.232.6079  
joe@hemisphere-design.com  
www.hemisphere-design.com

PROSPECT



DESIGN  
58 FORE ST. PORTLAND, ME  
www.prospectdesign.me  
T: 207-749-7400

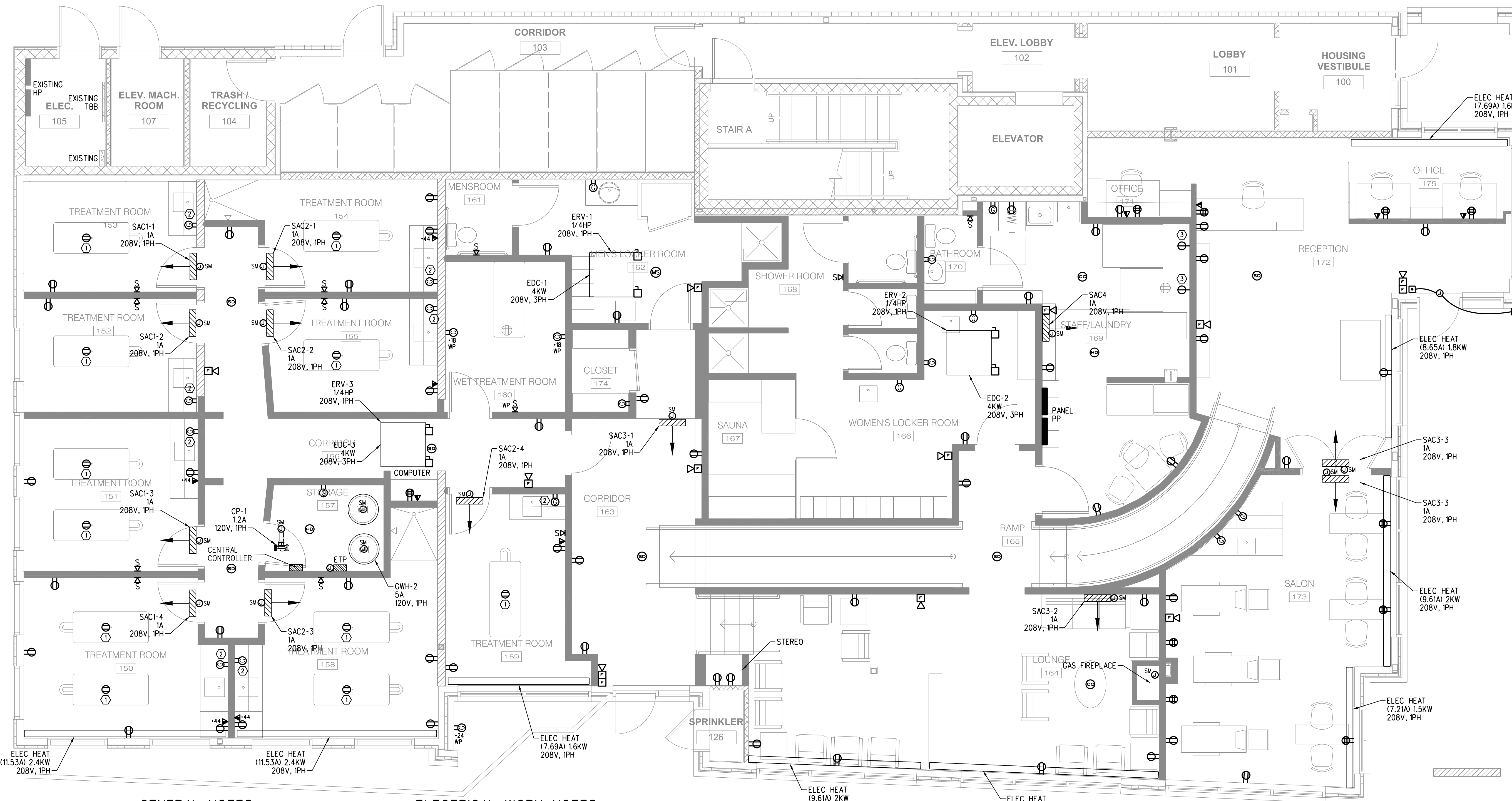


**BENNETT ENGINEERING**  
MECHANICAL • ELECTRICAL  
(207) 865-9475

NINE STONES TENANT FIT-UP  
185 FORE STREET  
BATEMAN PARTNERS, LLC  
PORTLAND BUILDERS INC

POWER PLAN

PERMIT



**GENERAL NOTES**

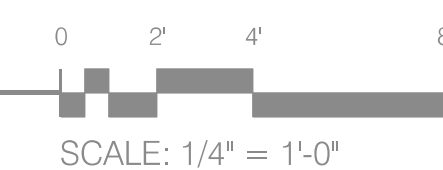
- MULTIHEAT PUMP OUTDOOR UNITS SCU #1, #2, #3, #4 SHALL BE LOCATED ON THE HIGH ROOF. COORDINATE LOCATIONS WITH THE ARCHITECT AND MECHANICAL PRIOR TO ROUGH-IN.  
SCU-1, 42A, 208V, 1PH  
SCU-2, 42A, 208V, 1PH  
SCU-3, 42A, 208V, 1PH  
SCU-4, 16A, 208V, 1PH

**ELECTRICAL WORK NOTES**

- CONTRACTOR SHALL COORDINATE LOCATION OF ALL FLOOR BOXES WITH OWNER AND ARCHITECT PRIOR TO ROUGH-IN.
- PROVIDE (1) GFCI RECEPTACLE AND (1) STANDARD RECEPTACLE IN DOUBLE GANG BOX. CONTRACTOR SHALL MAKE GFCI FIRST RECEPTACLE IN CIRCUIT. COORDINATE LOCATION WITH OWNER AND ARCHITECTURAL MILL WORK PRIOR TO ROUGH-IN.
- COORDINATE RECEPTACLE TYPE WITH OWNER SELECTED EQUIPMENT PRIOR TO ROUGH-IN.

**FLOOR PLAN**

SCALE: 1/4" = 1'-0"



NINE STONES OUTFIT  
1/4" = 1'-0"

SHEET TITLE	POWER PLAN
REVISION	
DRAWN BY:	
DATE:	January 14, 2016

E2