

HEMESPHERE DESIGN

Architecture

58 Fore Street
Portland, ME 04101
207.232.6079
joe@hemespheredesign.com
www.hemespheredesign.com

PROSPECT

DESIGN

58 FORE ST. PORTLAND, ME
www.prospectdesign.me
T: 207-749-7400



BENNETT ENGINEERING
MECHANICAL • ELECTRICAL
(207) 865-9475

NINE STONES TENANT FIT-UP
185 FORE STREET

BATEMAN PARTNERS, LLC

PORTLAND BUILDERS INC

LIGHTING PLAN

PERMIT

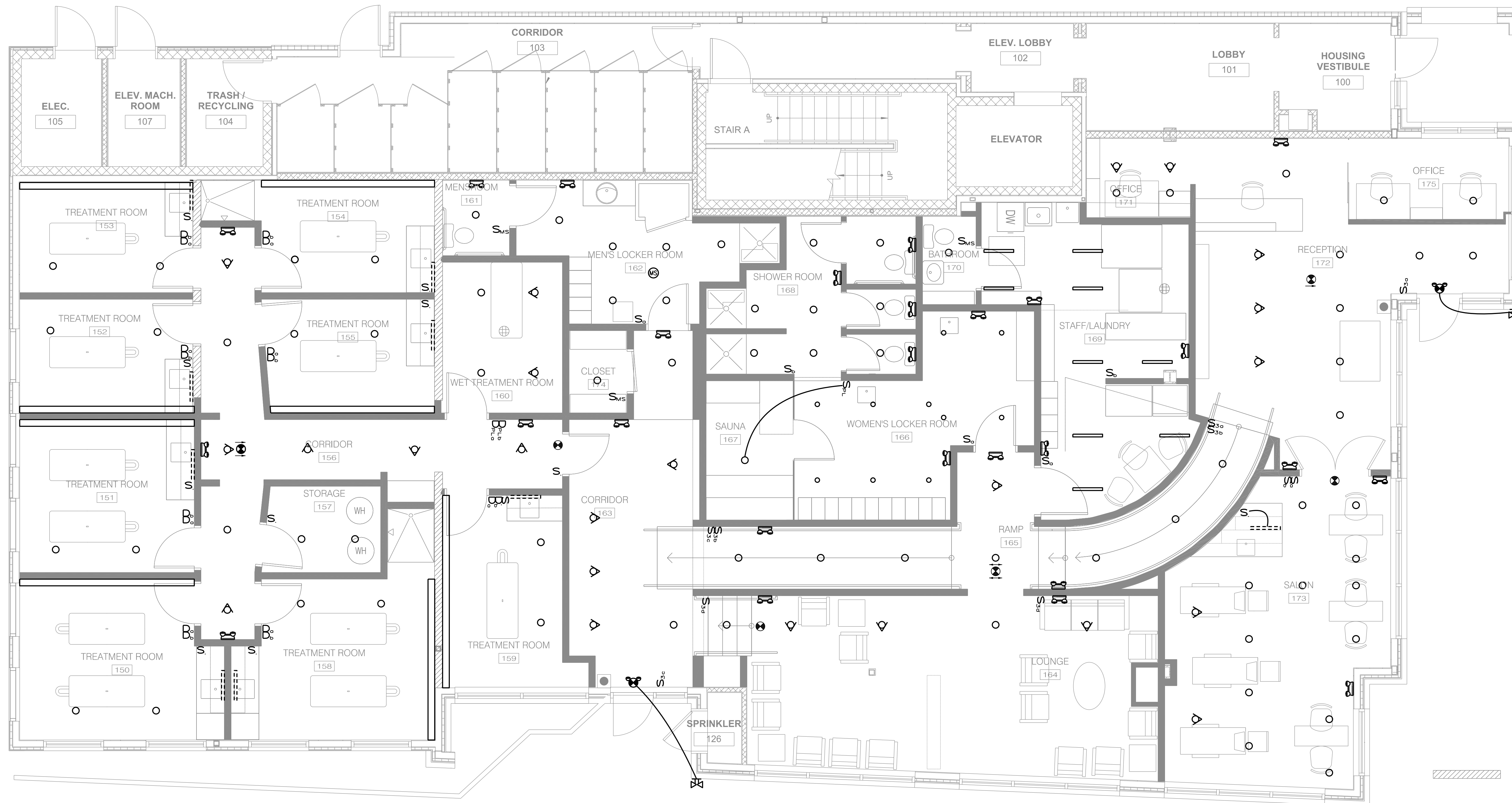
SHEET TITLE

REVISION

DRAWN BY:

DATE: January 14, 2016

E1



FLOOR PLAN

SCALE: 1/4"=1'-0"

LEGEND

- LED DOWNLIGHT
- ▽ LED WALL WASHER
- LED SURFACE LIGHT