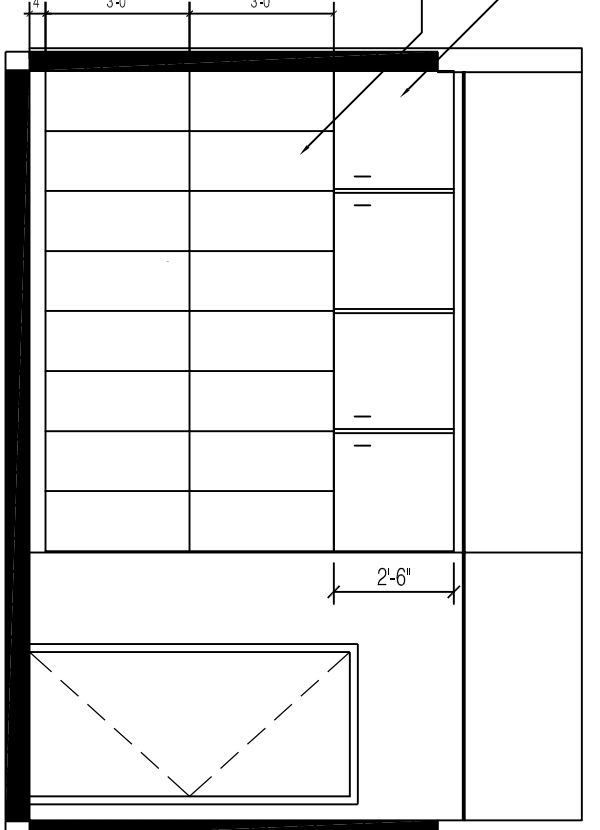
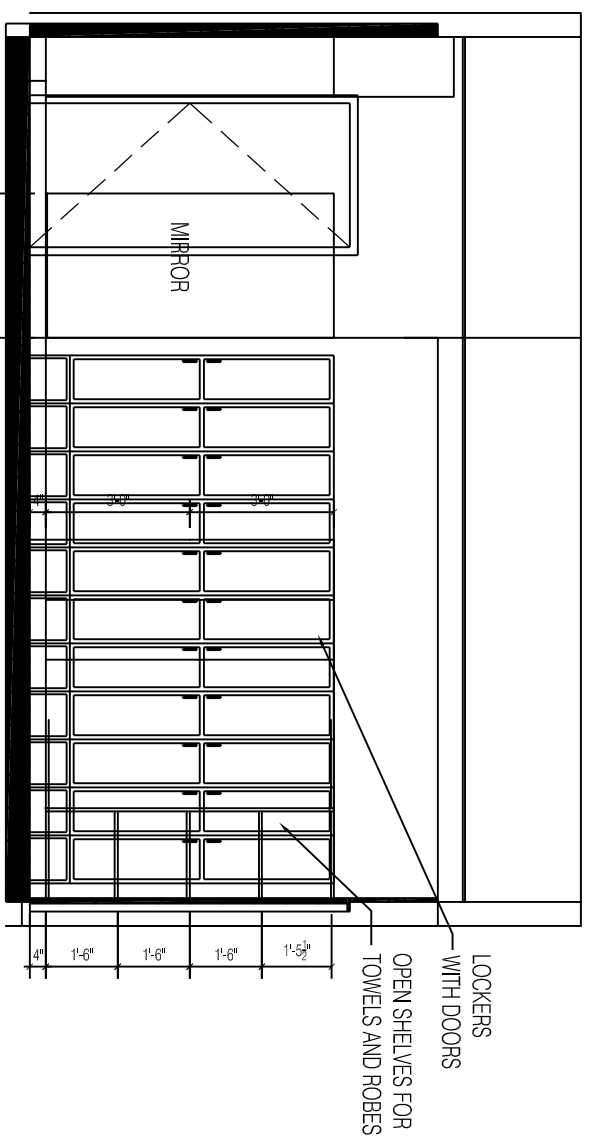


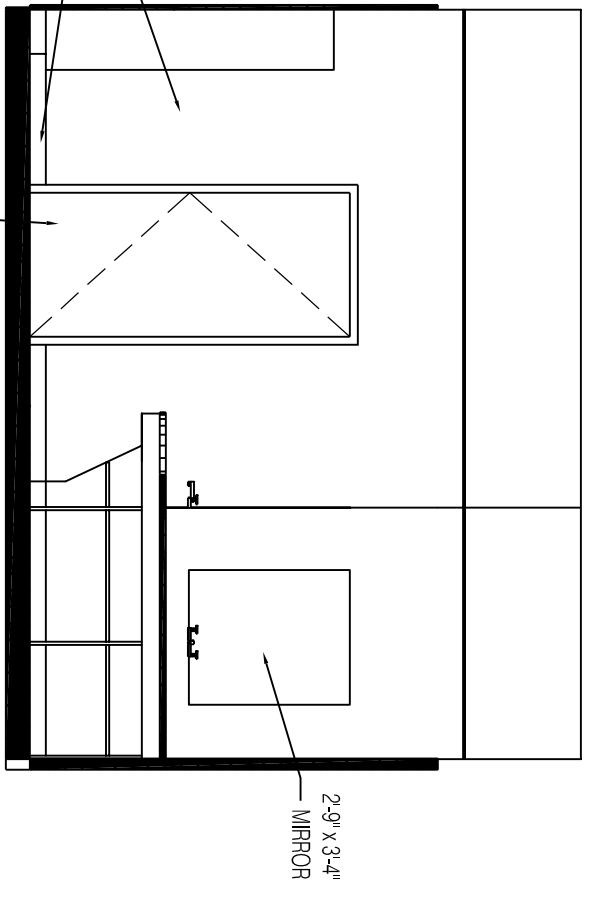
65 WOMAN'S LOCKER ROOM 166 ELEVATION



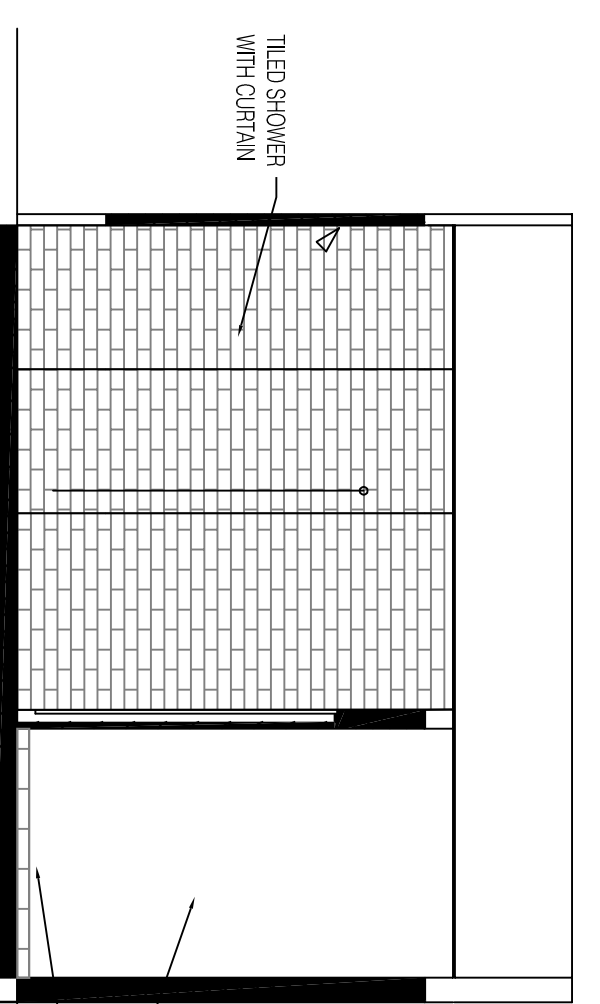
62 WOMAN'S LOCKER ROOM 166 ELEVATION (2)



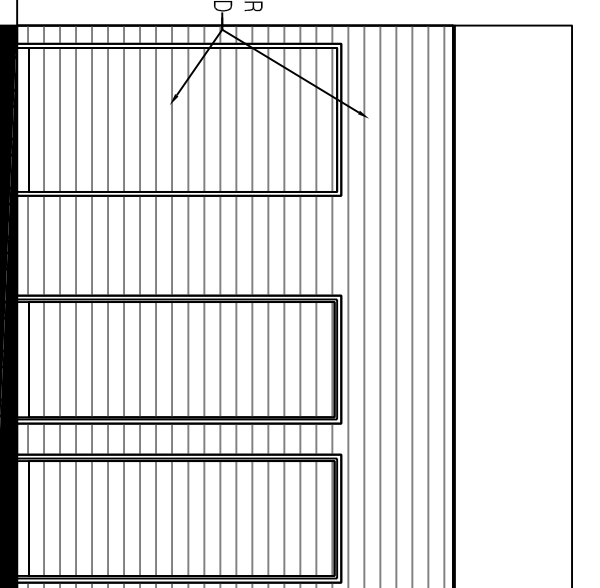
63 WOMAN'S LOCKER ROOM 166 ELEVATION (3)



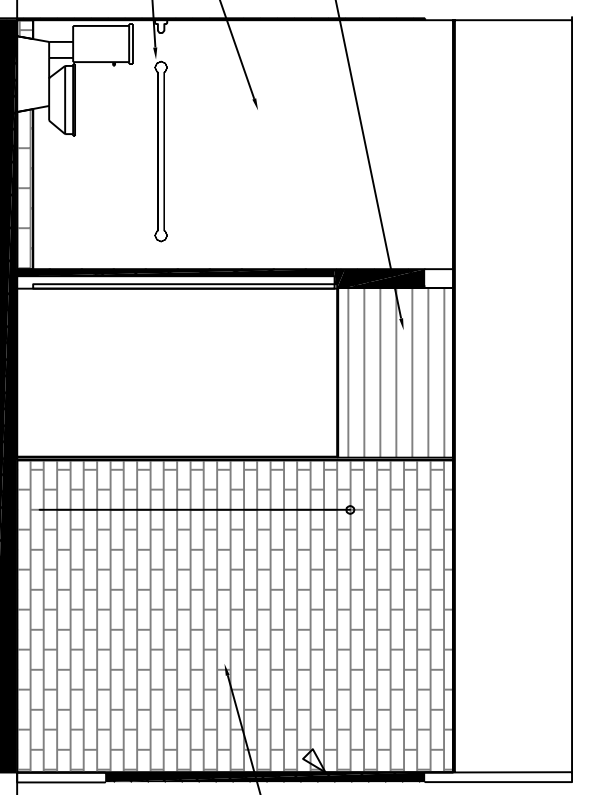
64 WOMAN'S LOCKER ROOM 166 ELEVATION (4)



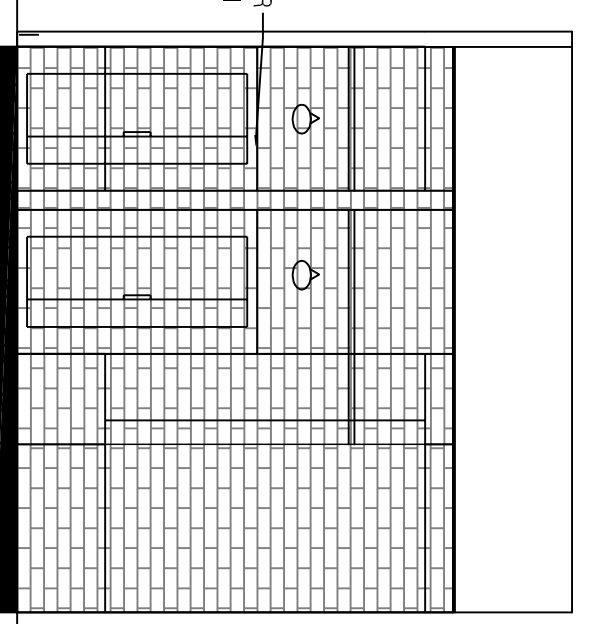
69 SHOWER ROOM 188 ELEVATION



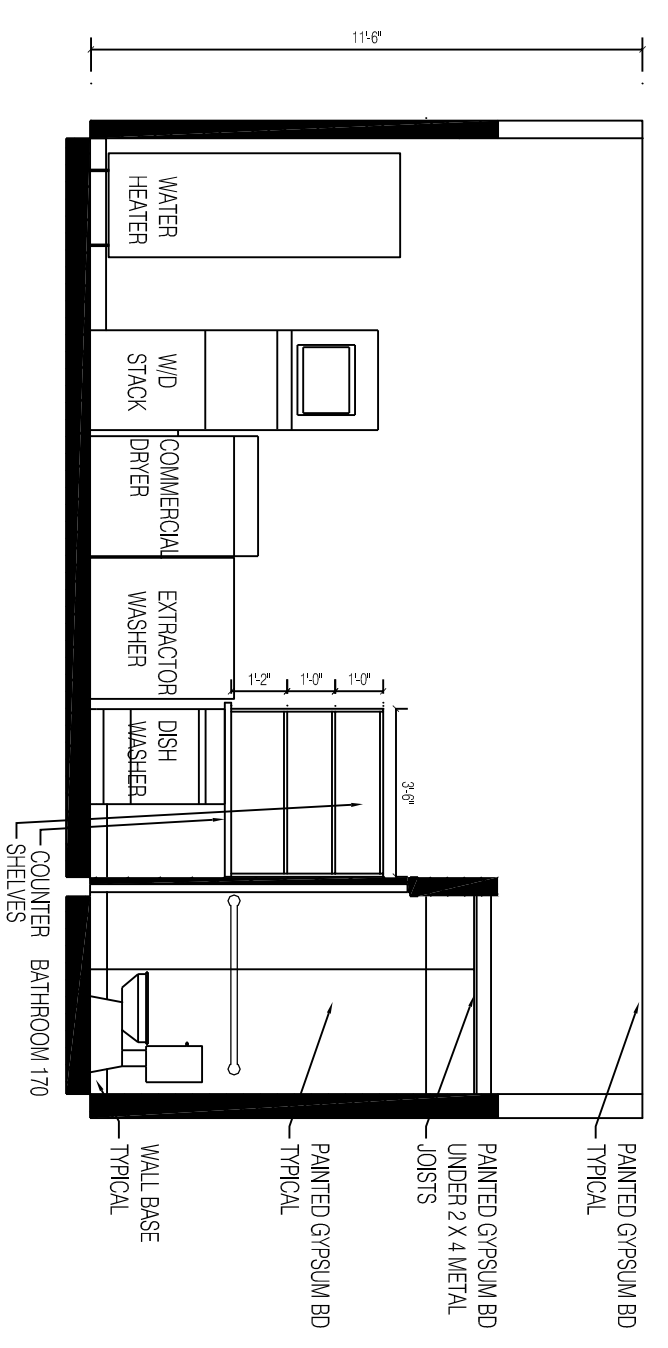
70 SHOWER ROOM 188 ELEVATION (2)



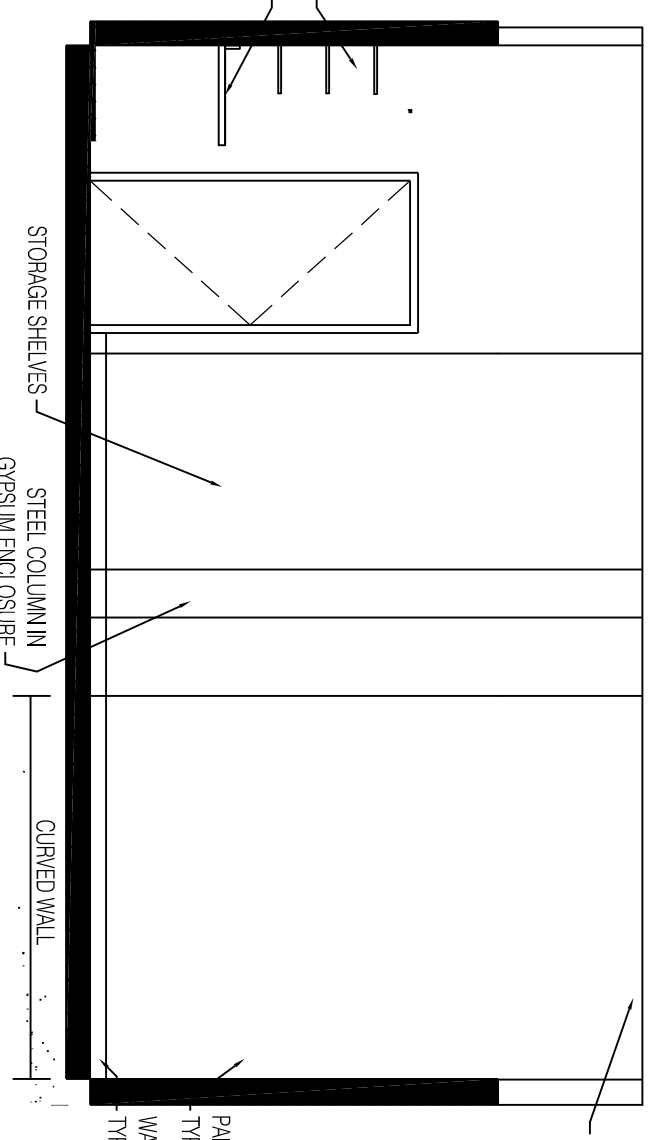
71 SHOWER ROOM 188 ELEVATION (3)



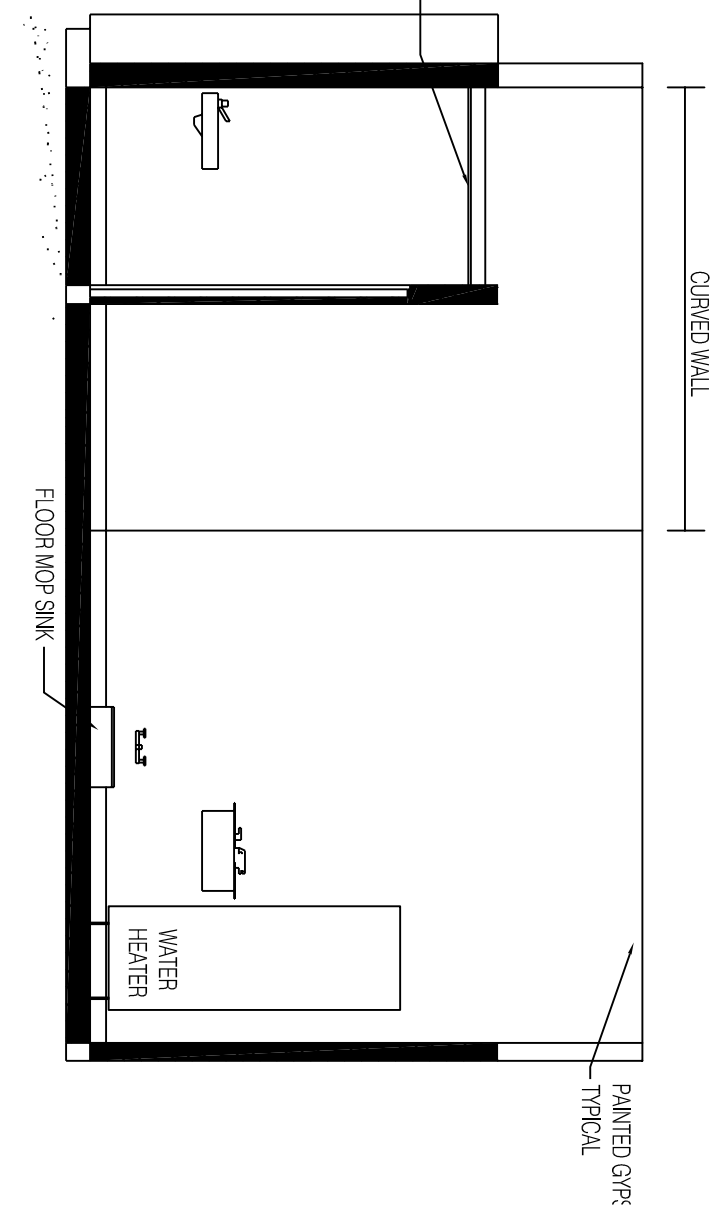
72 SHOWER ROOM 188 ELEVATION (4)



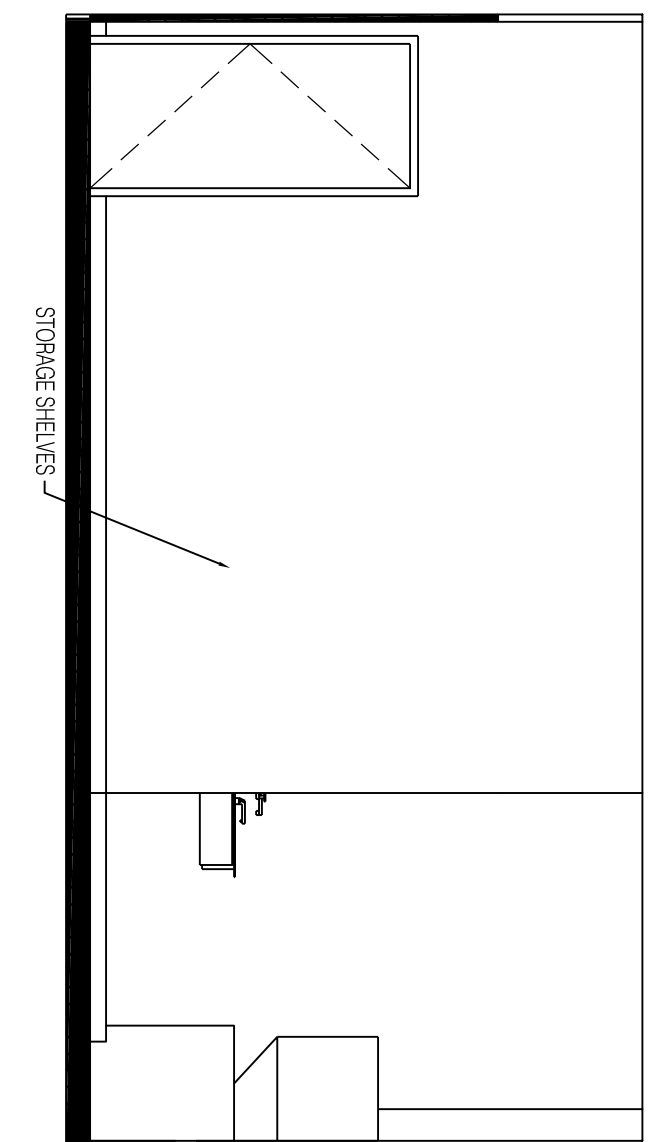
73 STAFF LAUNDRY 169 ELEVATION



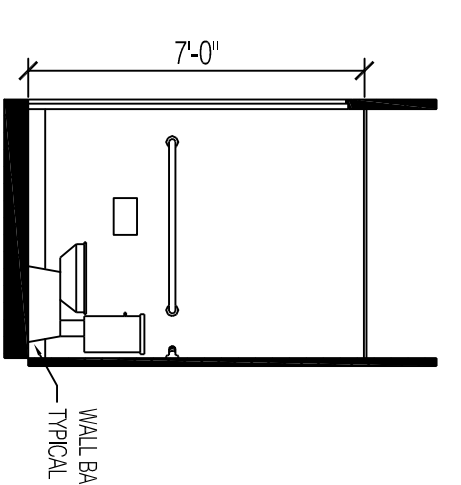
74 STAFF LAUNDRY 169 ELEVATION (2)



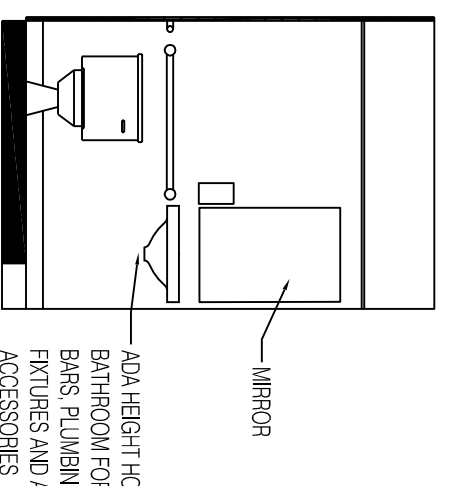
75 STAFF LAUNDRY 169 ELEVATION (3)



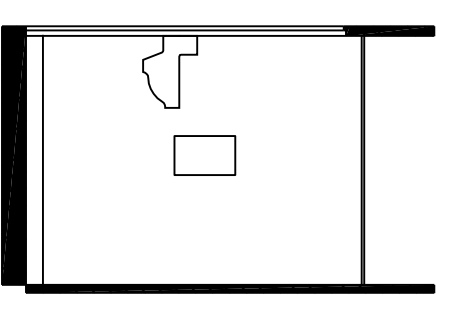
76 STAFF LAUNDRY 169 ELEVATION (4)



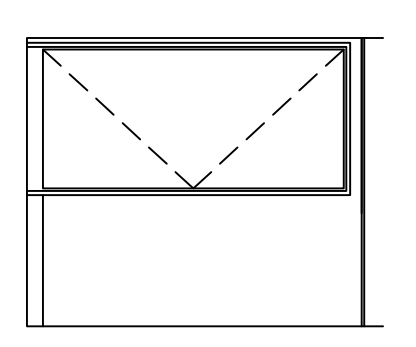
77 BATHROOM 170 ELEVATION



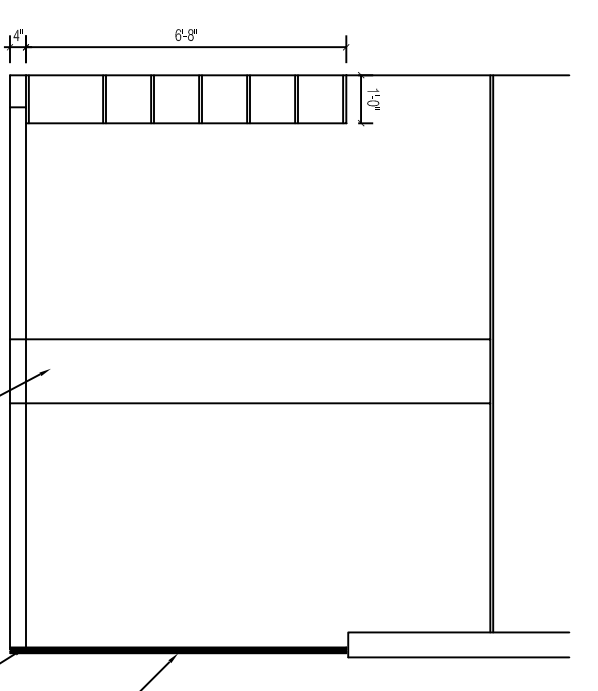
78 BATHROOM 170 ELEVATION (2)



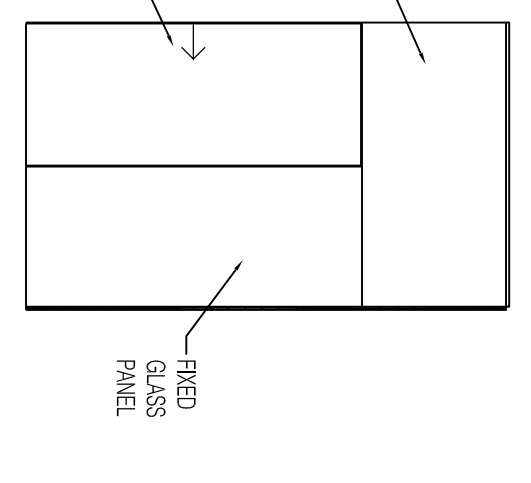
79 BATHROOM 170 ELEVATION (3)



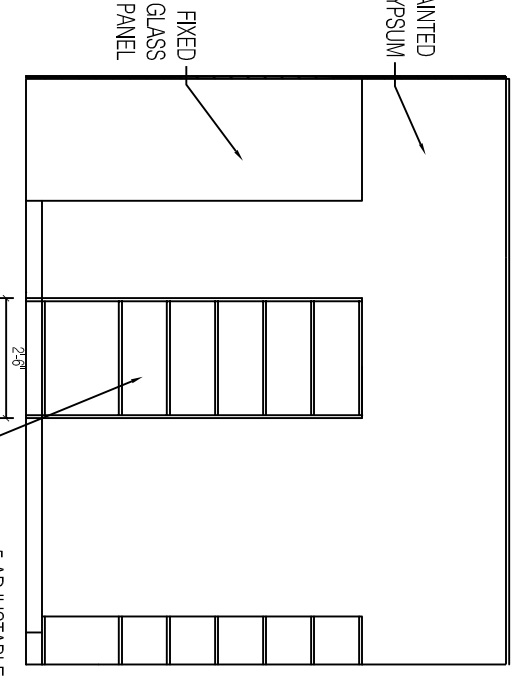
80 BATHROOM 170 ELEVATION (4)



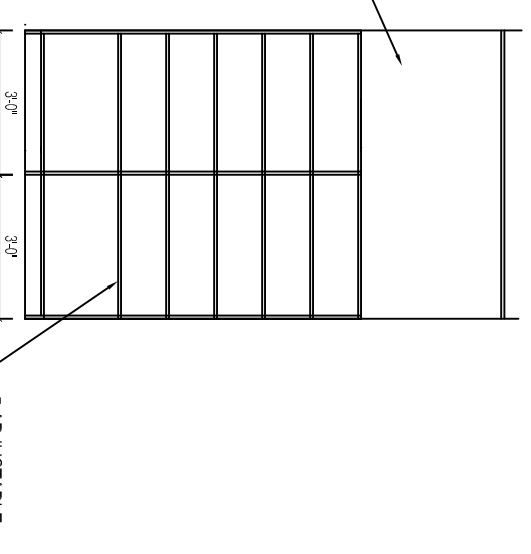
81 OFFICE 171 ELEVATION



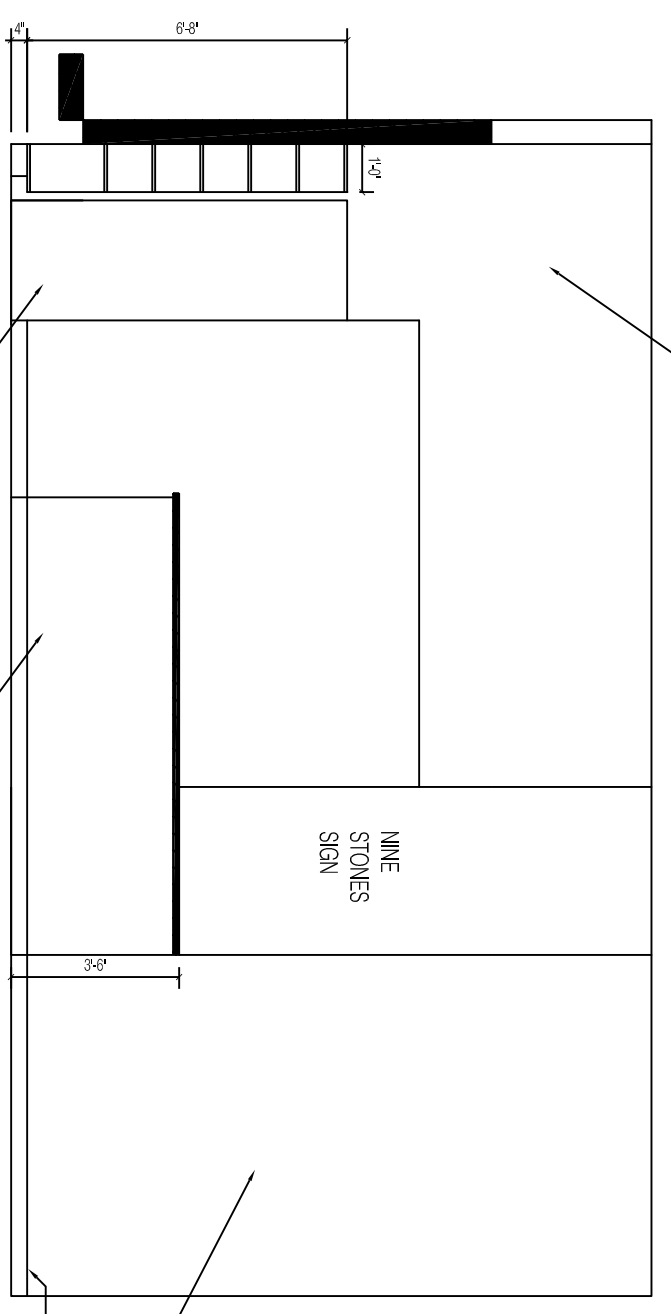
82 OFFICE 171 ELEVATION (2)



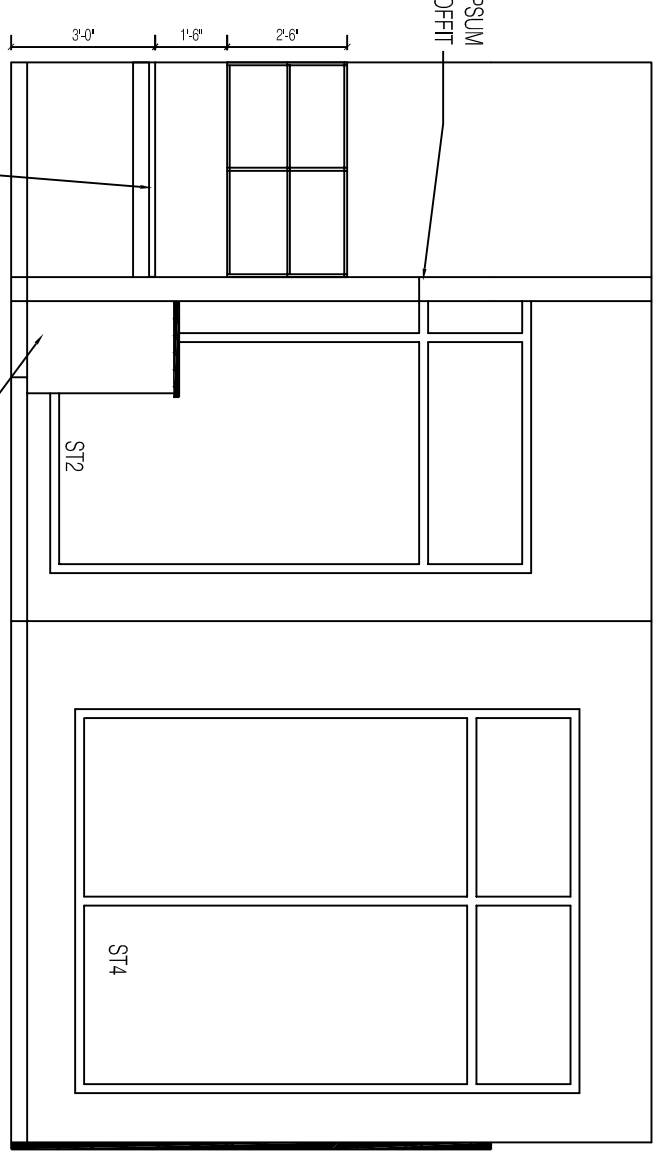
83 OFFICE 171 ELEVATION (3)



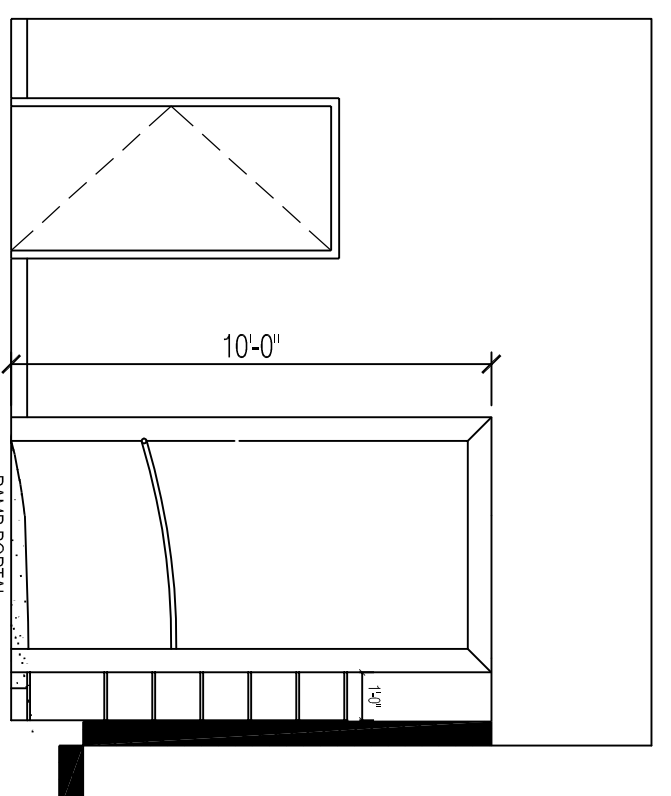
84 OFFICE 171 ELEVATION (4)



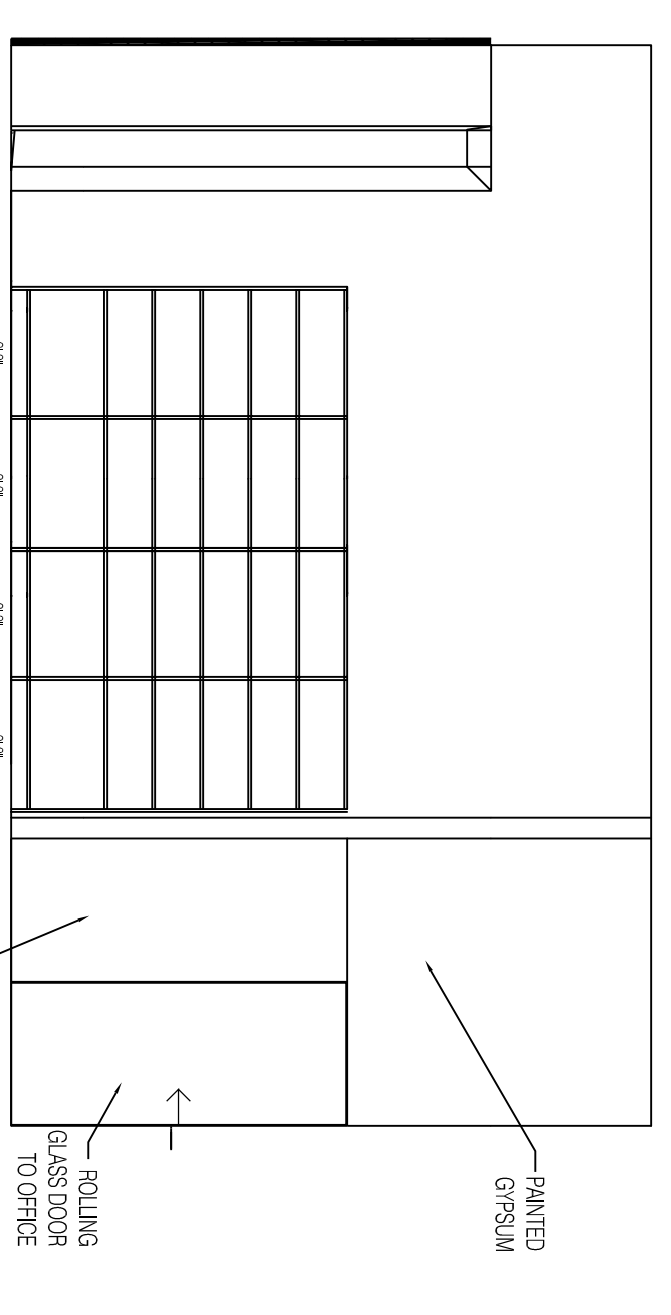
85 RECEPTION 172 ELEVATION



86 RECEPTION 172 ELEVATION (2)



83 RECEPTION 172 ELEVATION (3)



84 RECEPTION 172 ELEVATION (4)



**Hemesphere DESIGN**  
Architecture

58 Fore Street  
Portland, ME 04101  
207.232.6079  
joe@hemisphere-design.com  
www.hemisphere-design.com

**PROSPECT DESIGN**

58 FORE ST. PORTLAND, ME  
www.prospectdesign.me  
T: 207 - 749 - 7400

NINE STONES TENANT FIT-OUT  
185 FORE STREET  
BATEMAN PARTNERS, LLC  
PORTLAND BUILDERS INC

SHEET TITLE  
**INTERIOR ELEVATIONS**  
REVISION  
**PERMIT**

DATE: January 15, 2016

**A 8**