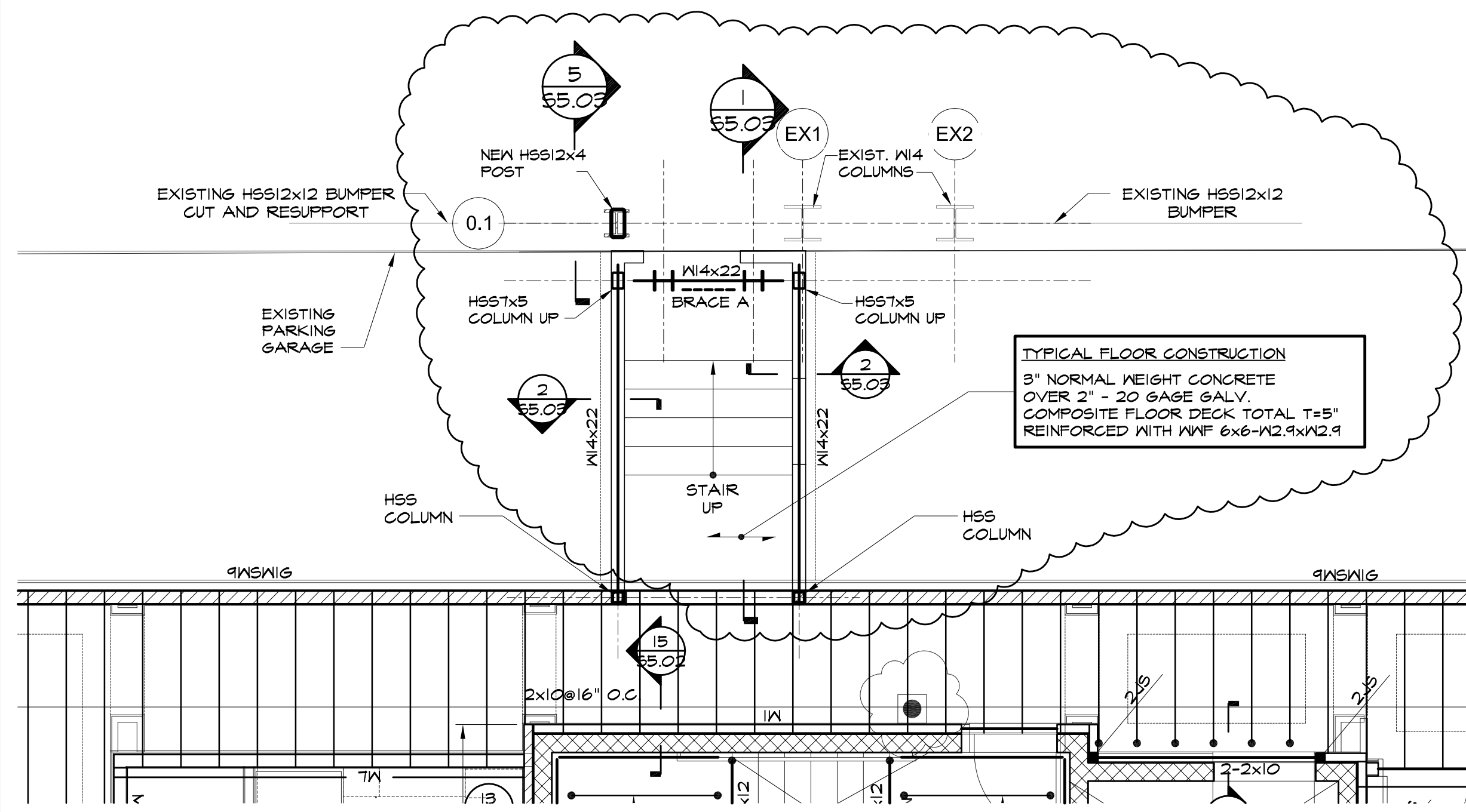
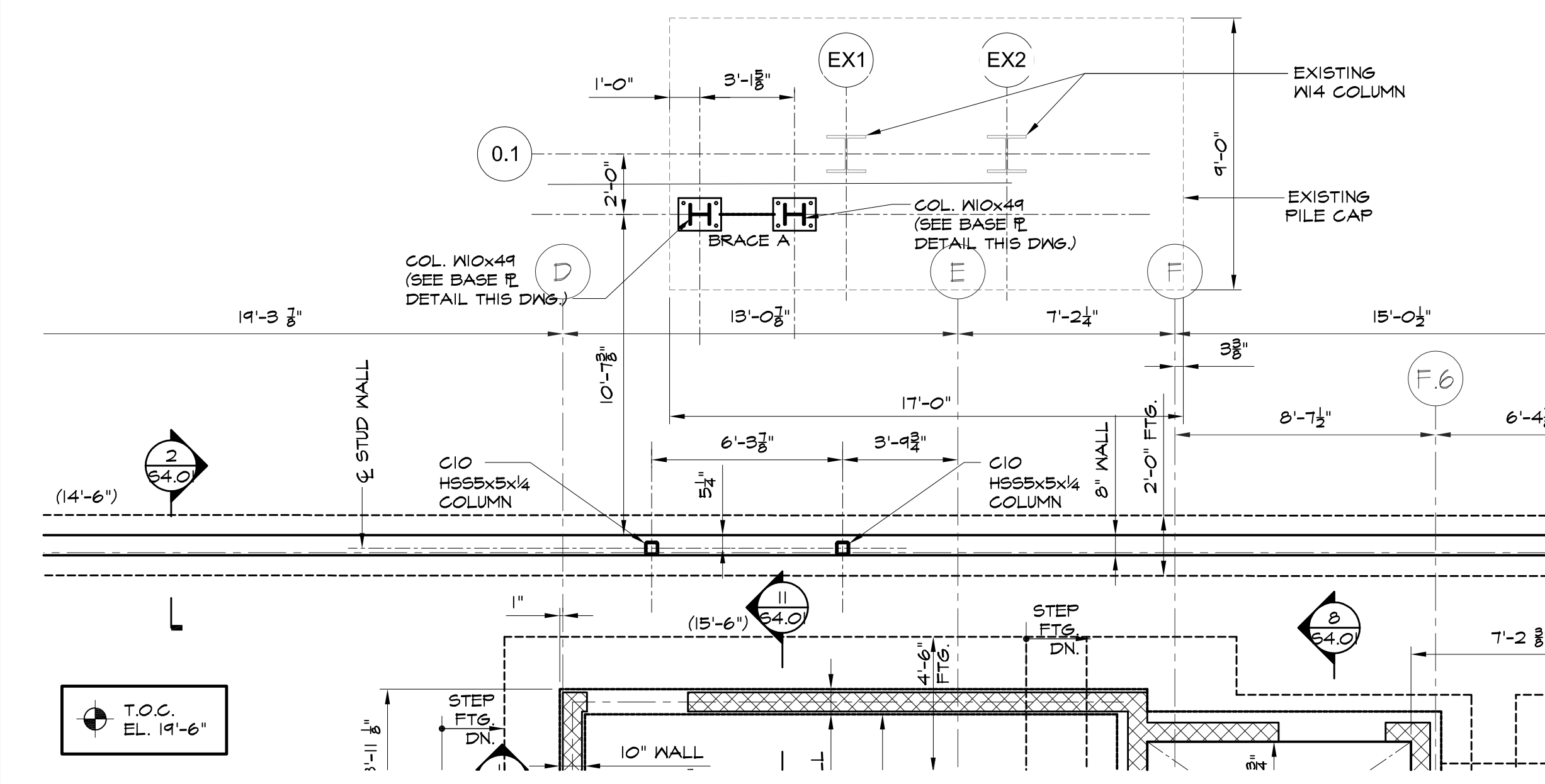


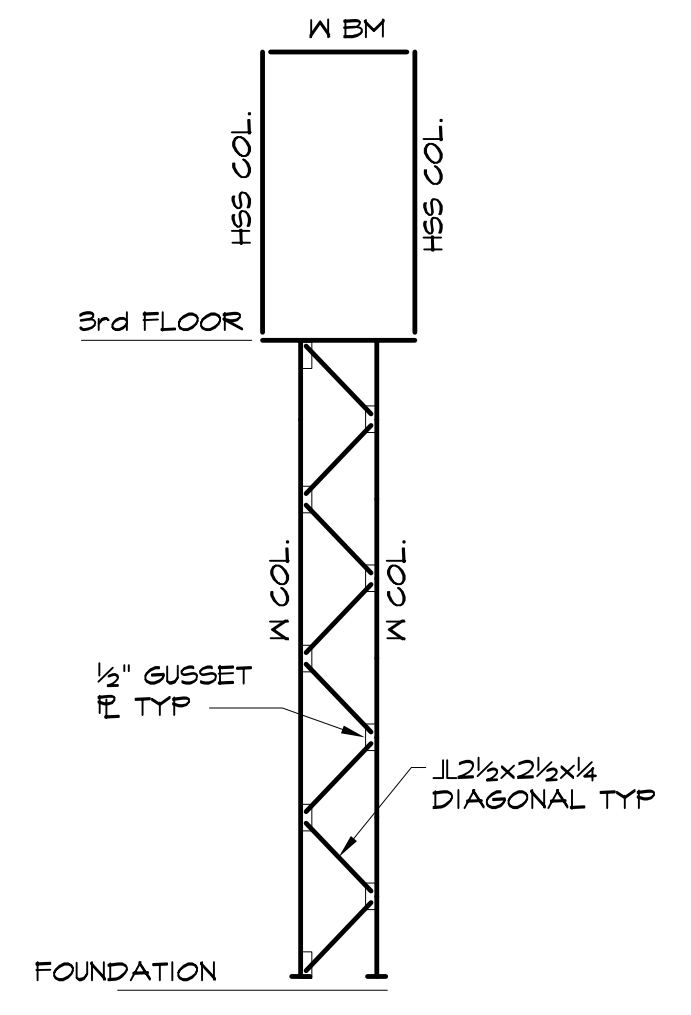
BRIDGE ROOF FRAMING PLAN
1/4"=1'-0"



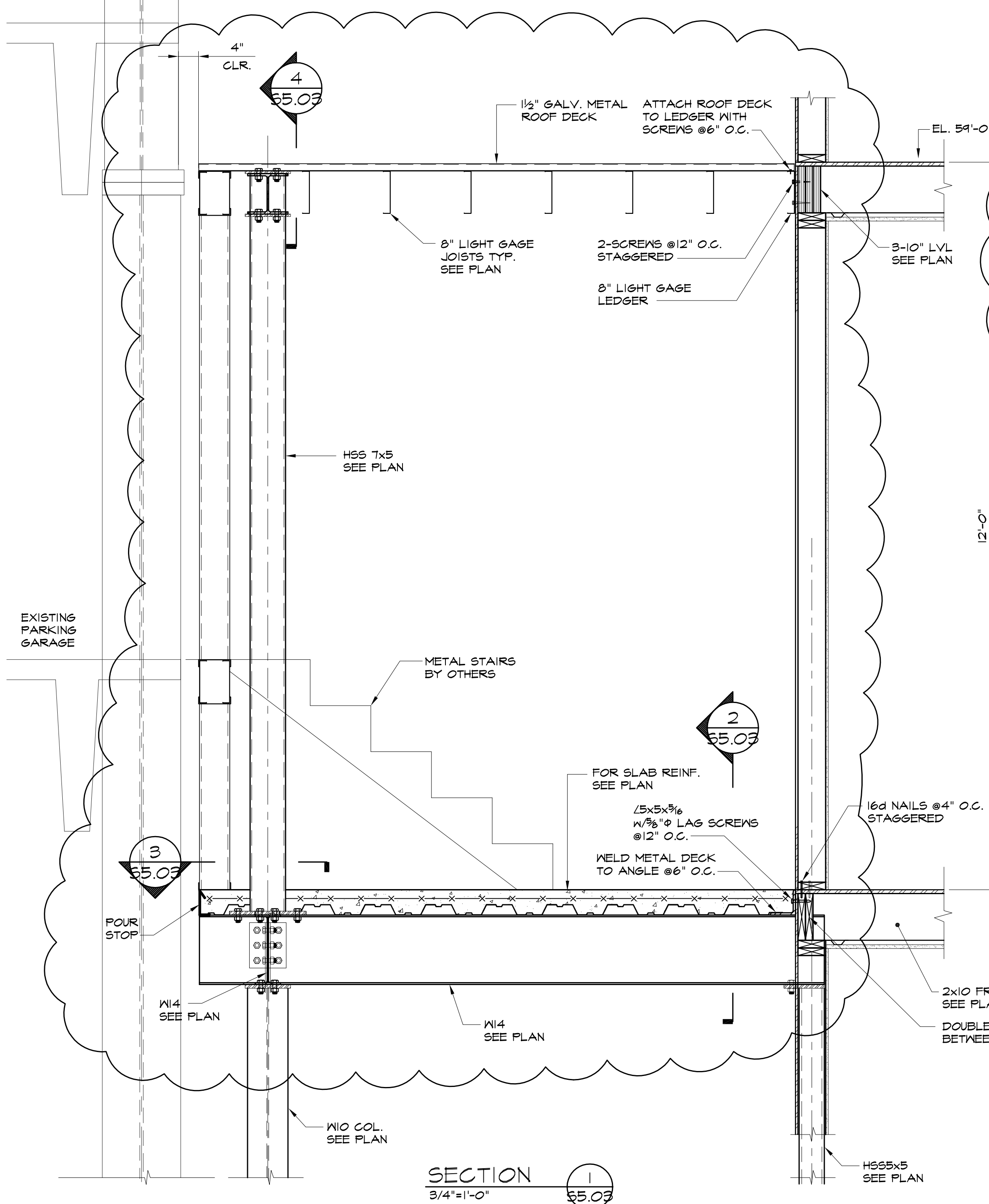
BRIDGE THIRD FLOOR FRAMING PLAN
1/4"=1'-0"



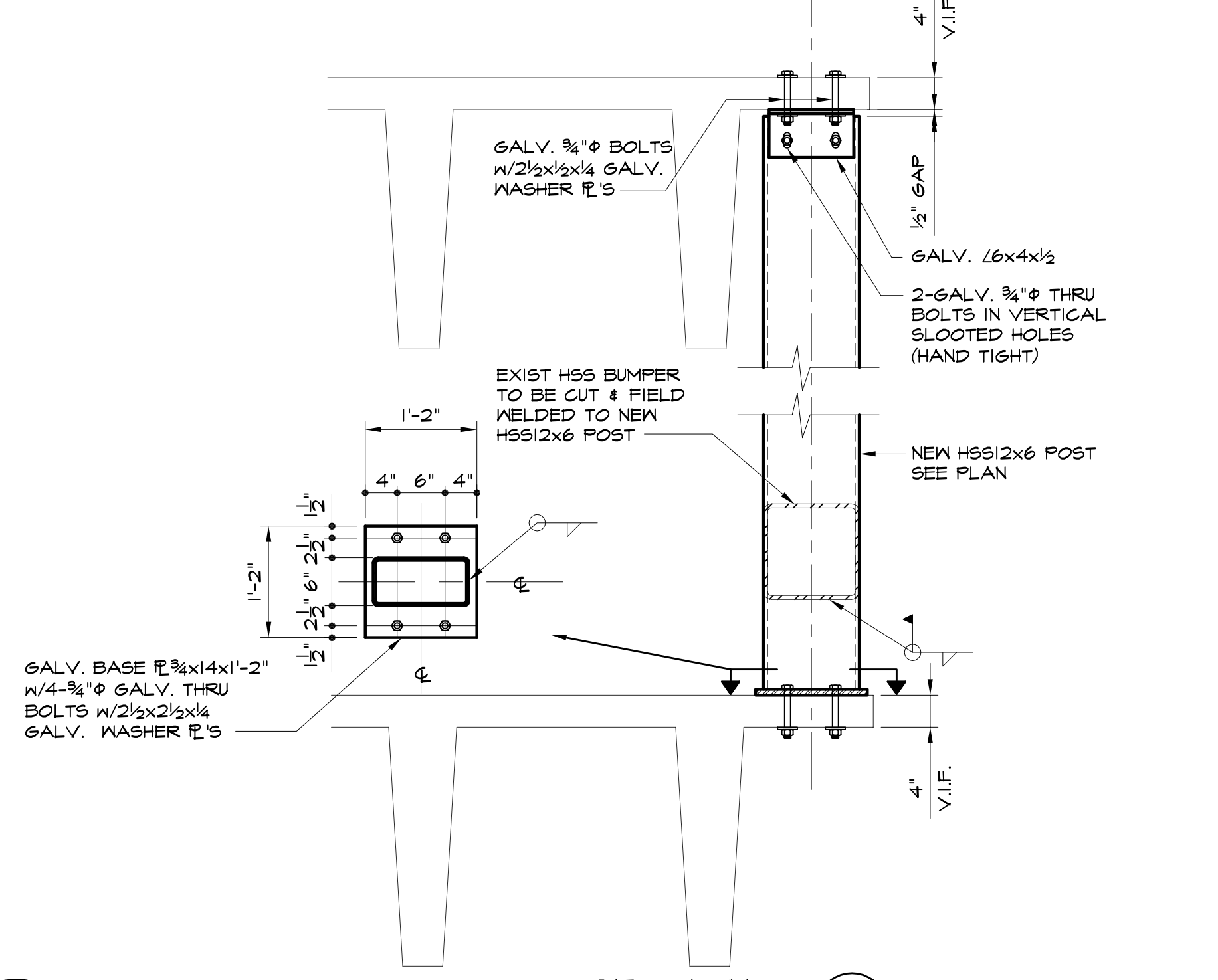
BRIDGE FOUNDATION PLAN
1/4"=1'-0"



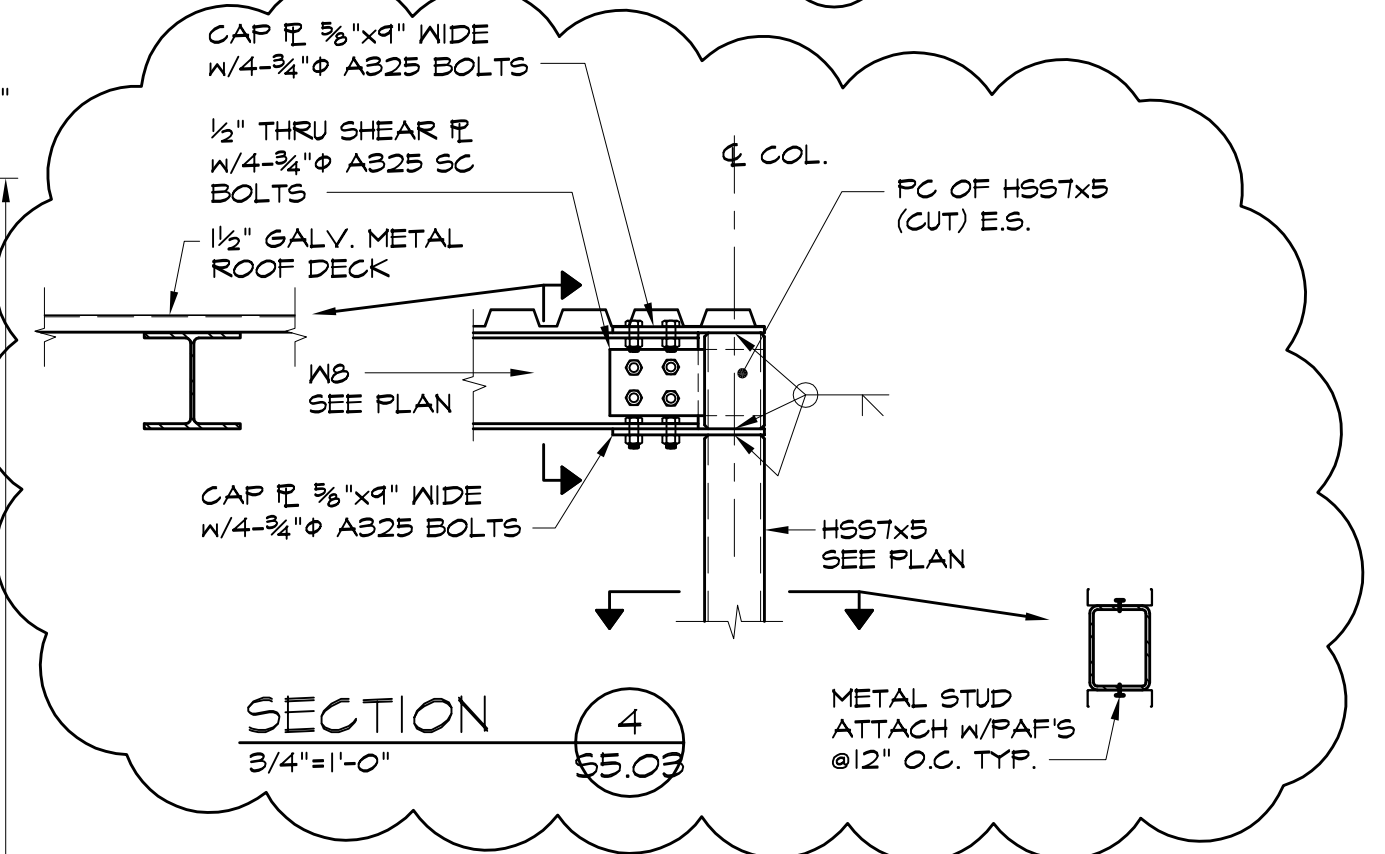
BRACE ELEVATION "A"
1/8"=1'-0"



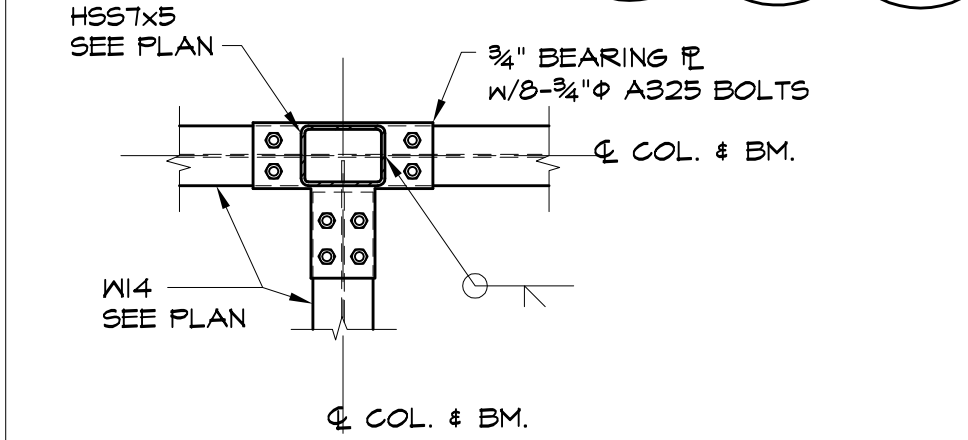
SECTION 1
3/4"=1'-0"



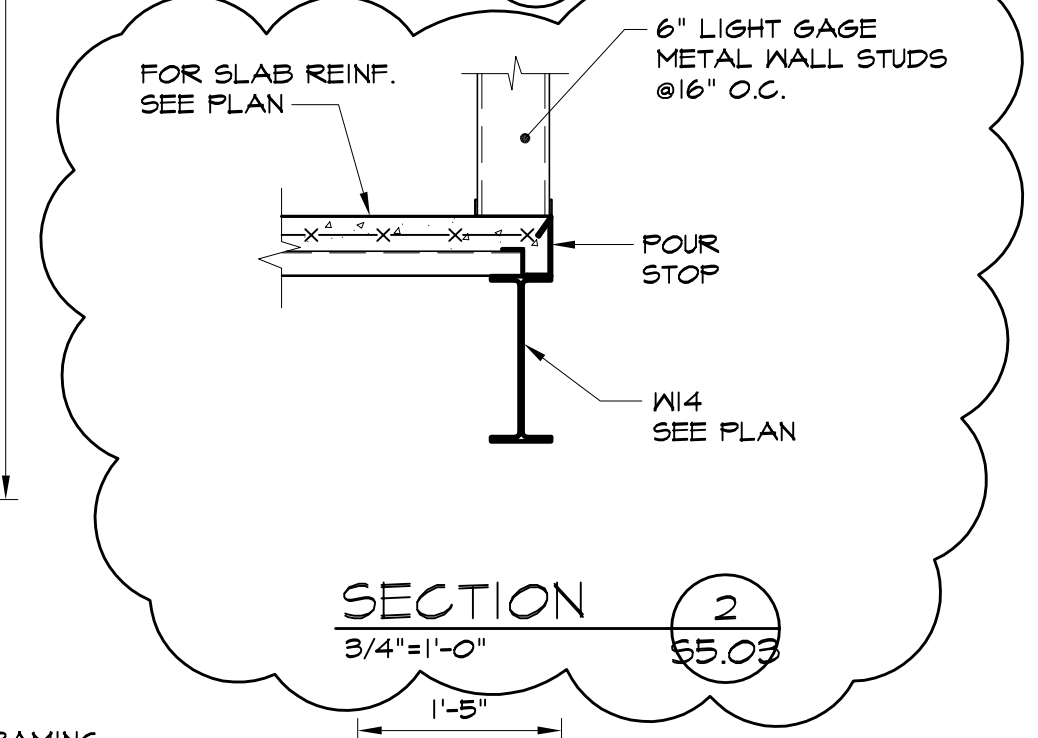
SECTION 5
3/4"=1'-0"



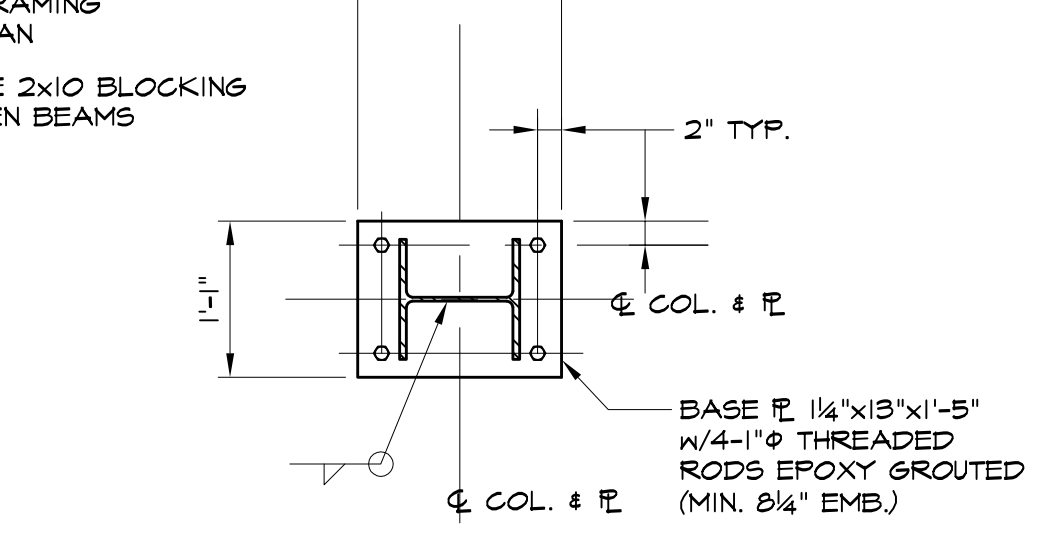
SECTION 4
3/4"=1'-0"



SECTION 3
3/4"=1'-0"



SECTION 2
3/4"=1'-0"



BASE PLATE DETAIL
3/4"=1'-0"

STATE OF MAINE
 BATEMAN PARTNERS, L.L.C.
 470 FORE STREET
 PORTLAND, ME 04101
 Prepared For: VEITAS VEITAS engineers
 689 Grand Street, Suite 10184
 PORTLAND, ME 04103
 TEL: (207) 772-6022 FAX: (207) 772-4056
 Architect: ARCHITECTYPE architects
 48 Union Wharf Portland, Maine 04101
 (207) 772-6022 Fax (207) 772-4056
 Project: 185 FORE STREET
 185 Fore Street, Portland Maine
 Revisions:
 1 | 05-22-2015 | BID SET
 2 | 11-06-2015 | ADDENDUM #3
 Date: 16 JUNE, 2014
 Scale:
 BRIDGE FRAMING
 PLANS & DETAILS
 S5.03