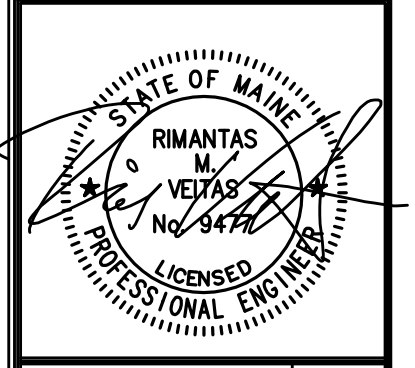


TYPICAL SHEAR WALL ELEVATION
PARALLEL TO TRUSSES

TYPICAL SHEAR WALL ELEVATION
PERPENDICULAR TO TRUSSES



Prepared For: **BATEMAN PARTNERS, LLC.**
470 FORE STREET
PORTLAND, ME 04101

Consultant: **VEITAS VEITAS** engineers
800 Green Street, Suite 101
Brunswick, Massachusetts 02184
TEL: (781) 862-2603 FAX: (781) 862-2605

Architect: **ARCHITECTYP** architects
48 Union Wharf, Portland, Maine 04101
(207) 772-6022 Fax (207) 772-4056

Project: **185 FORE STREET**
185 Fore Street, Portland Maine

Revisions: **1** 05-22-2015 BID SET

Date: **16 JUNE, 2014**
Scale:
Shear Wall Elevations

S3.04