

Prepared For:  
**BATEMAN PARTNERS, LLC.**  
 470 FORE STREET  
 PORTLAND, ME 04101

Consultant:  
**VEITAS VEITAS**  
 engineers  
 690 Green Street, Suite 101  
 Braintree, Massachusetts 02184  
 TEL: (781) 842-2803 FAX: (781) 842-2805

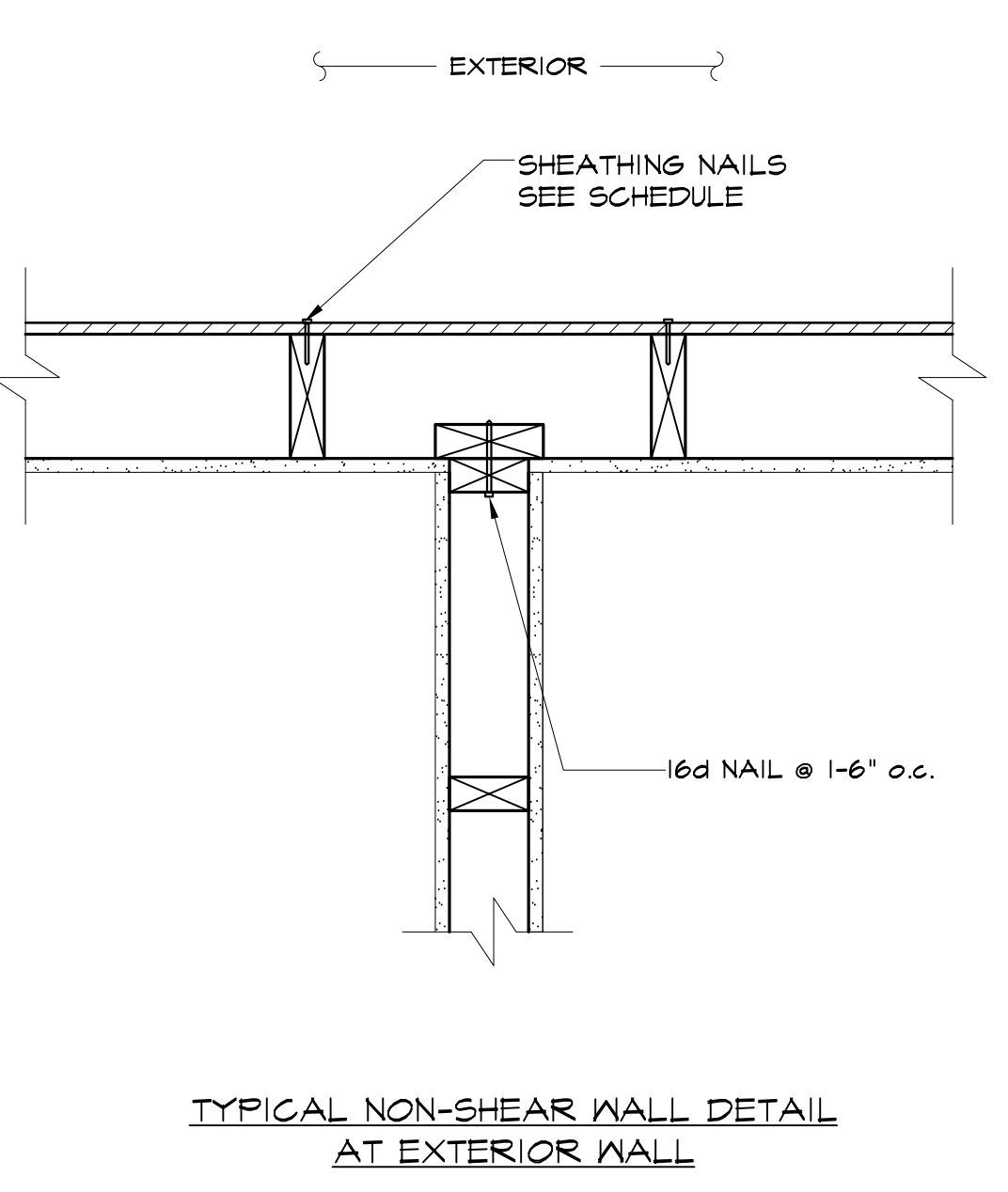
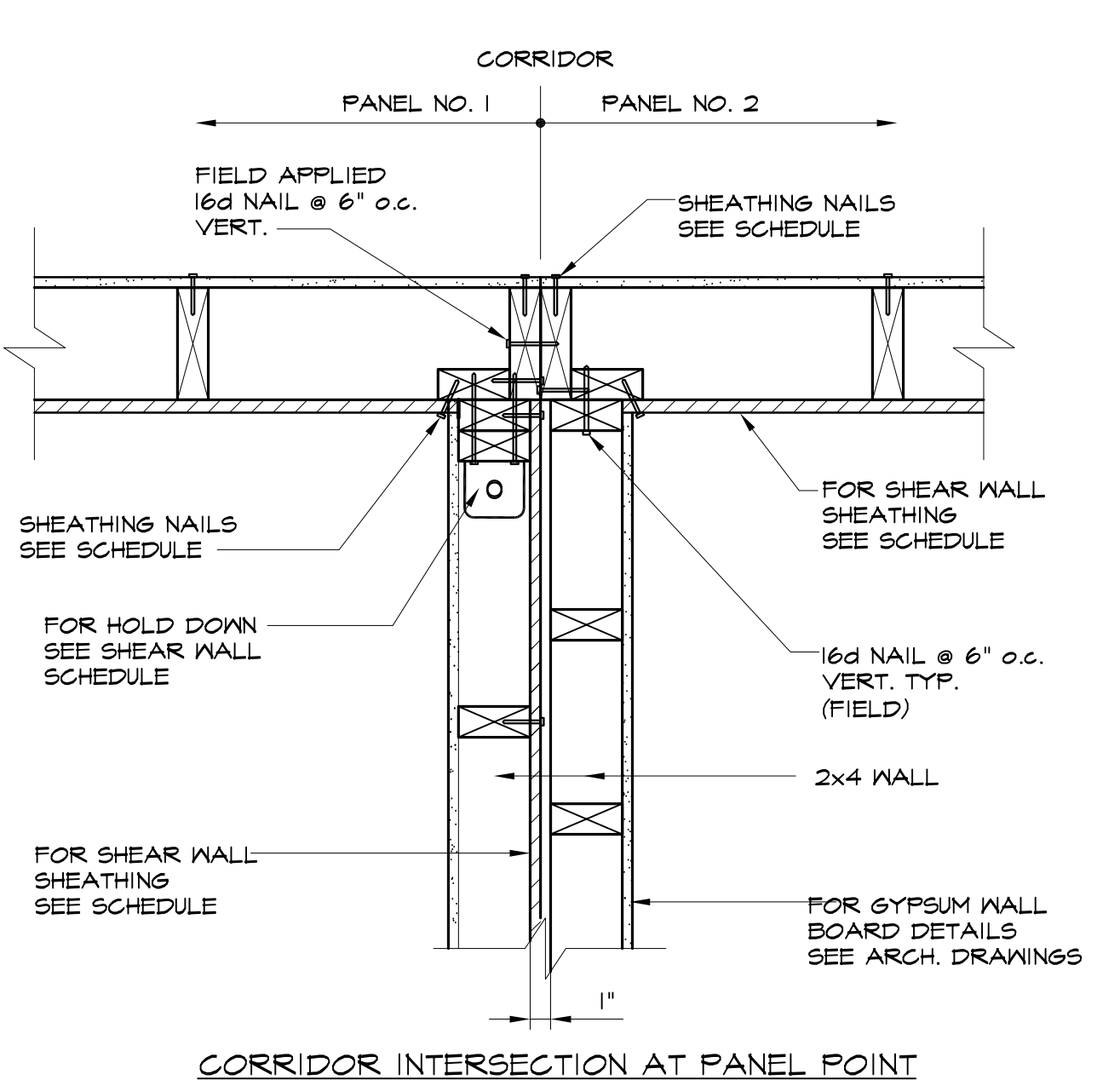
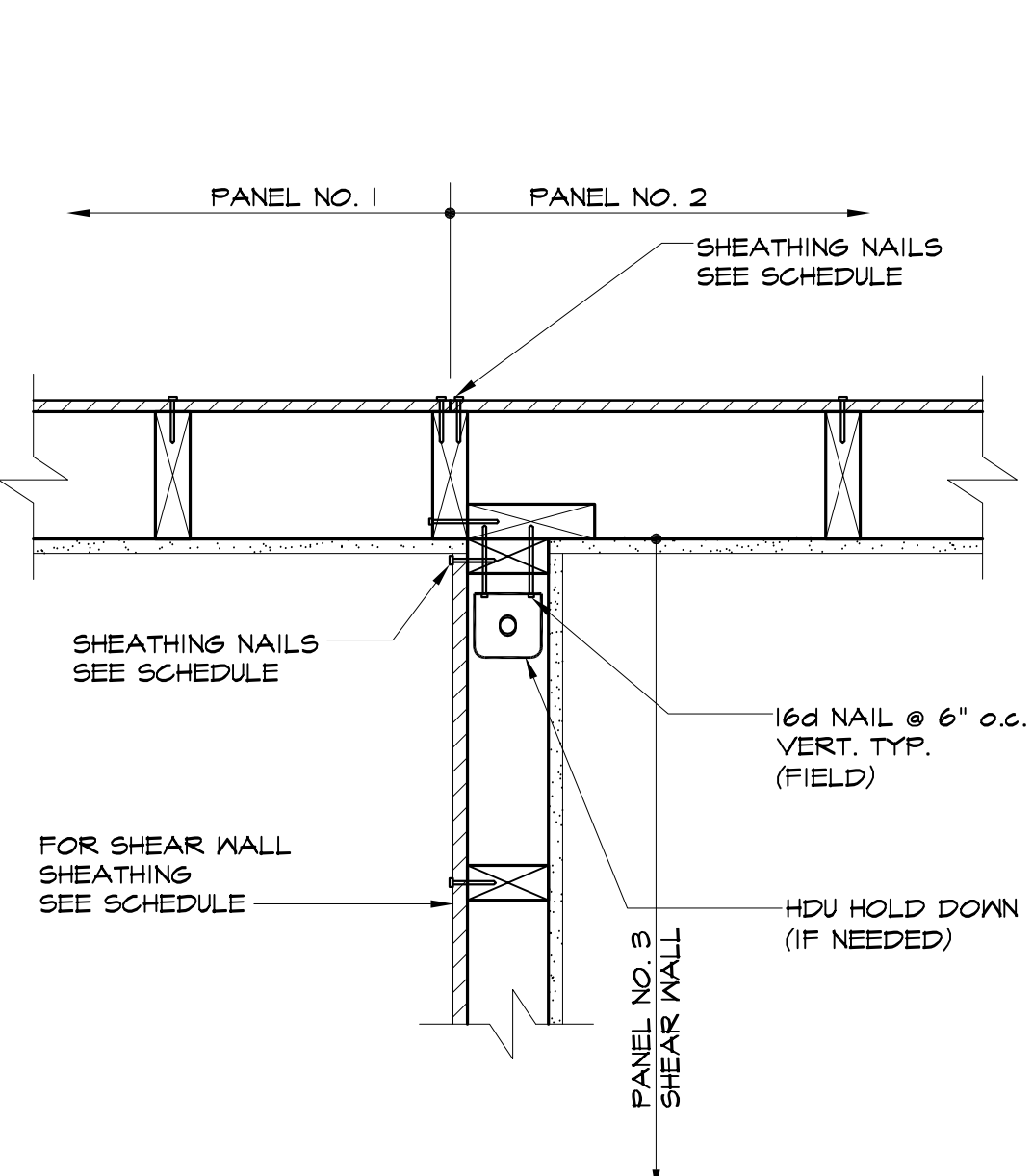
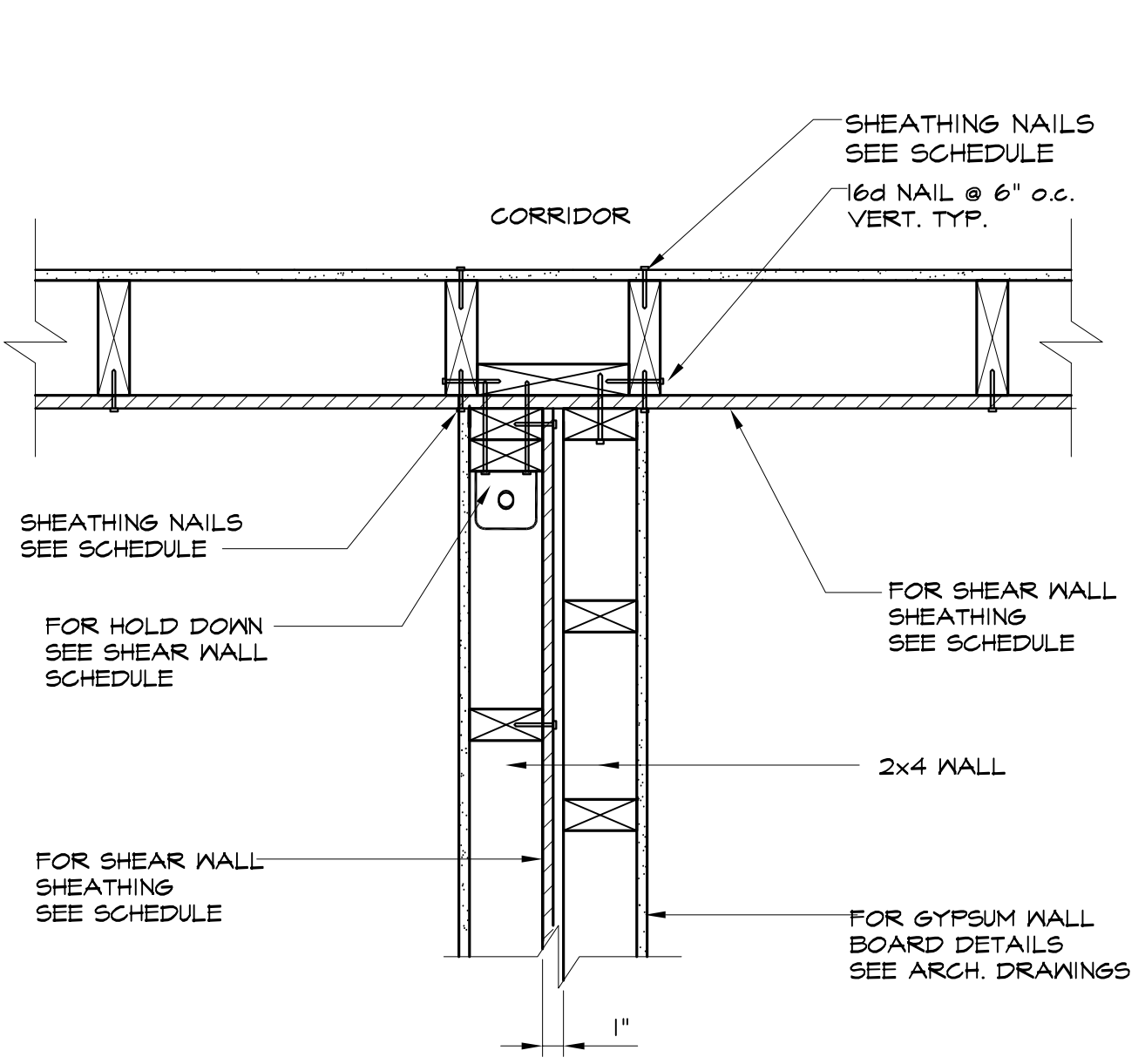
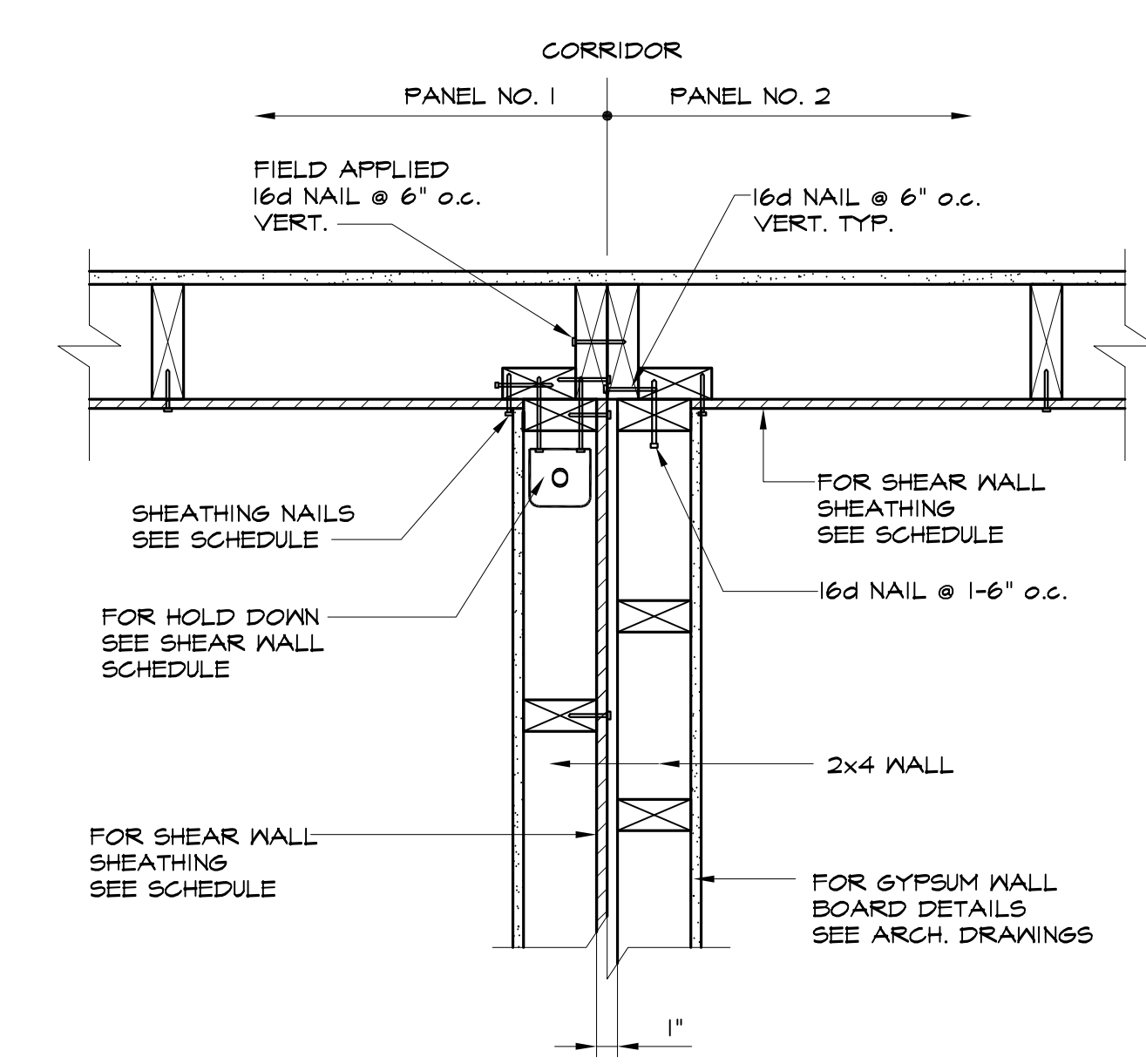
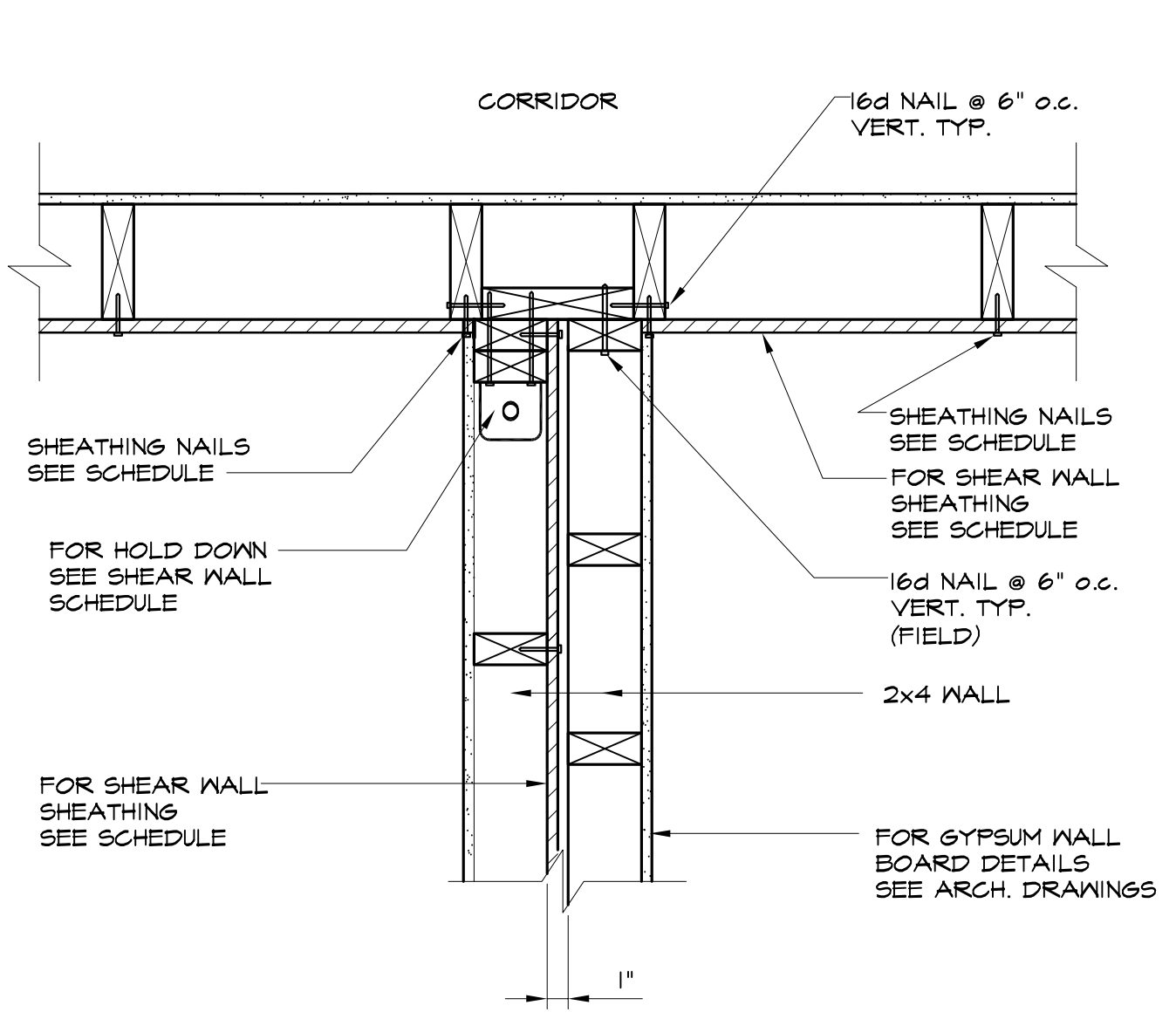
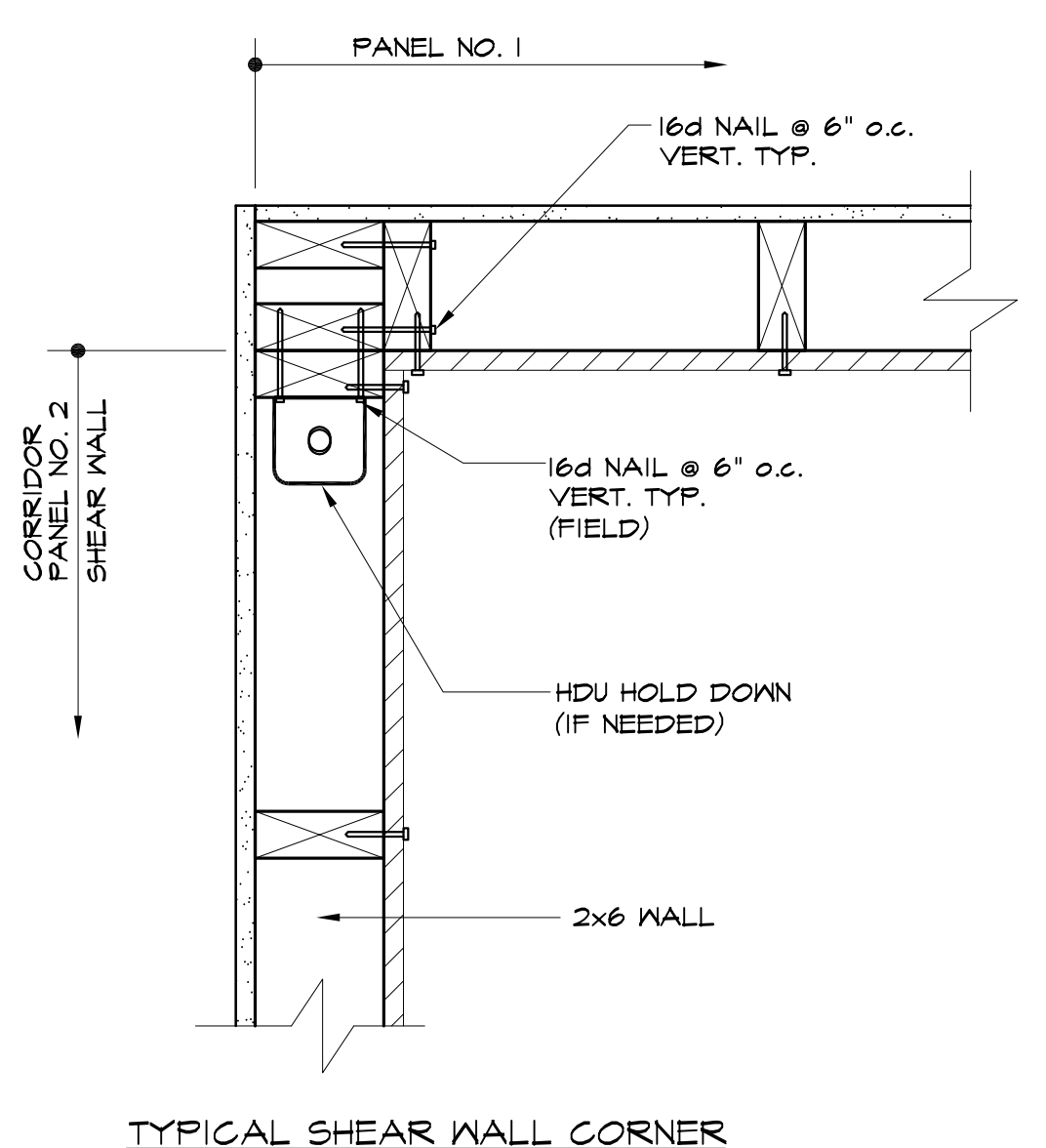
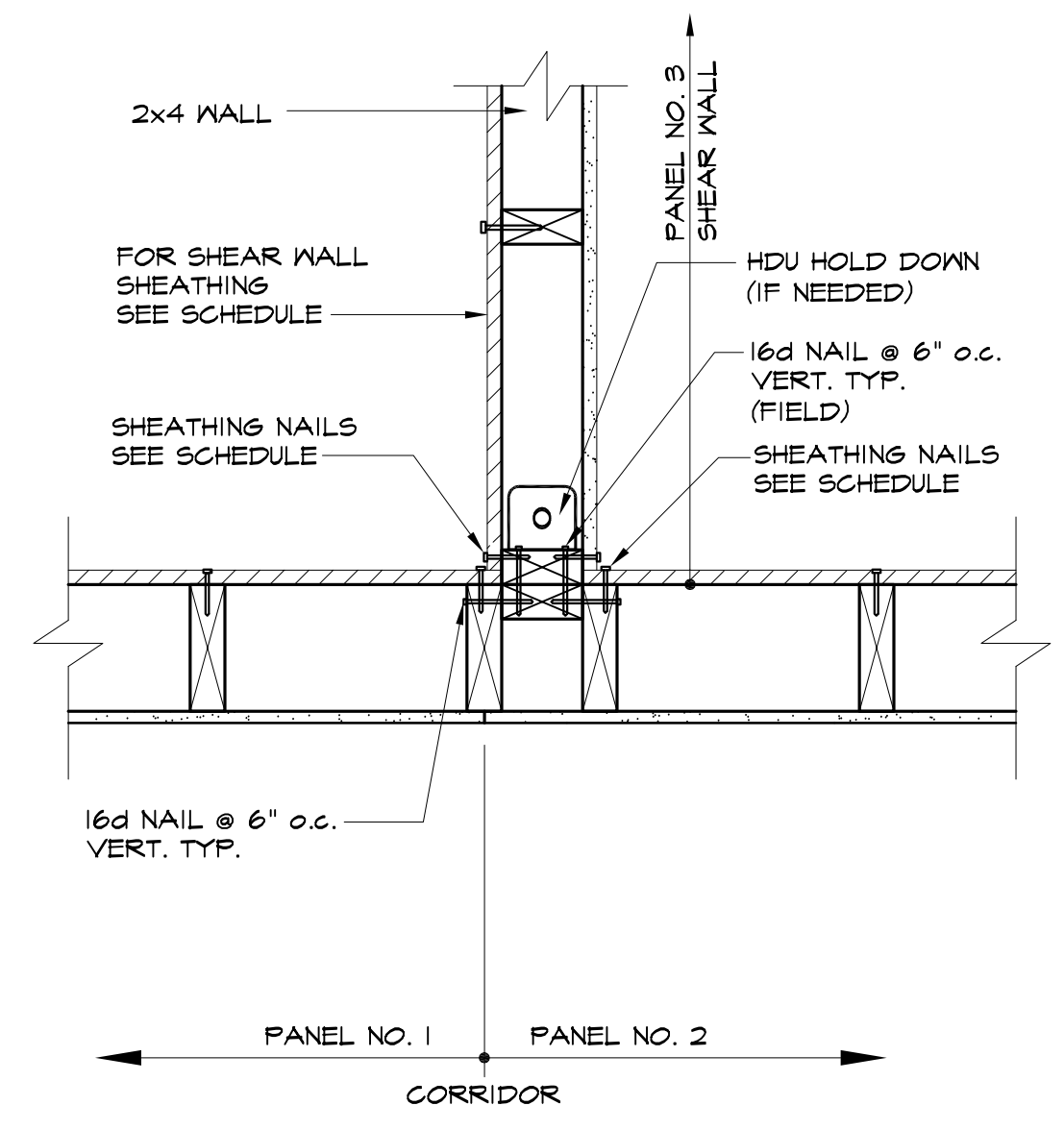
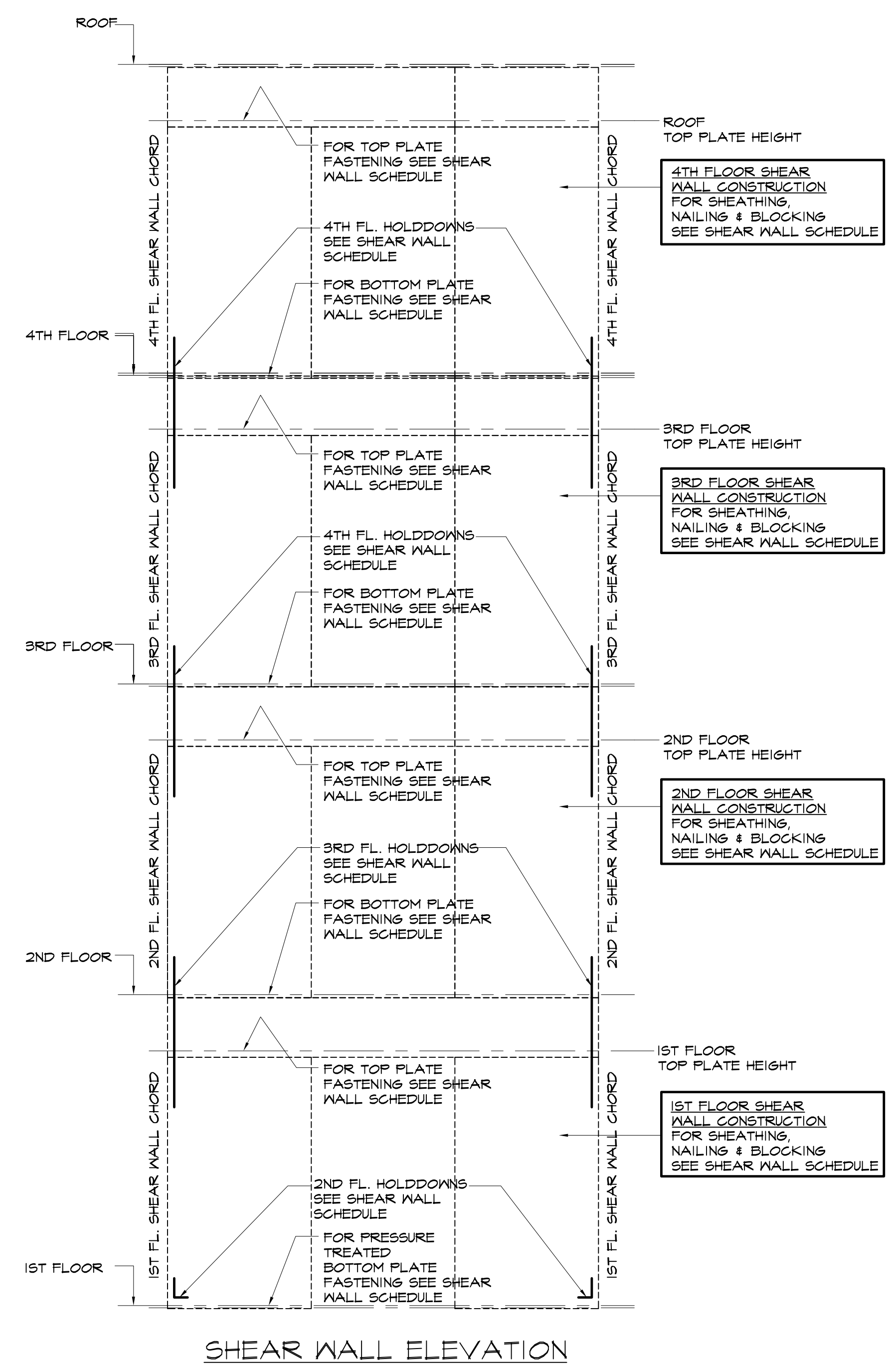
Architect:  
**ARCHITECTYP**  
 architects  
 48 Union Wharf, Portland, Maine 04101  
 (207) 772-6022 Fax (207) 772-4056

Project:  
 185 FORE STREET  
 185 Fore Street, Portland Maine

Revisions:  
 1 05-22-2015 BID SET

Date: 16 JUNE, 2014  
 Scale:  
 Shear Wall Elevation  
 & Shear Wall Details

**S3.03**



NOTE:  
 SHOP NAILS NOT SHOWN FOR CLARITY  
 → INDICATES FIELD APPLIED 16d NAIL @ 6" o.c. VERT.  
 ← INDICATES FIELD APPLIED SHEATHING NAIL. SEE SCHEDULE FOR