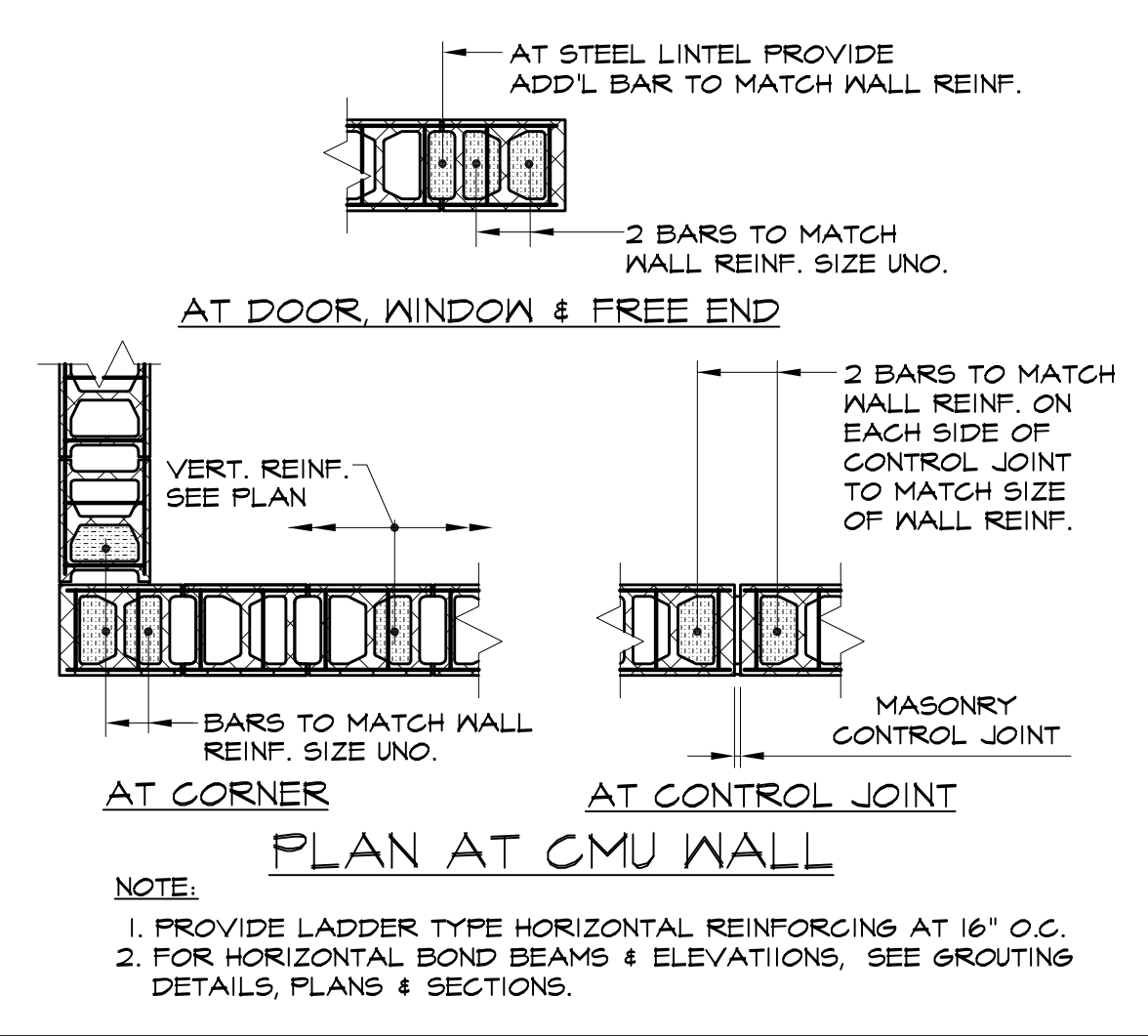
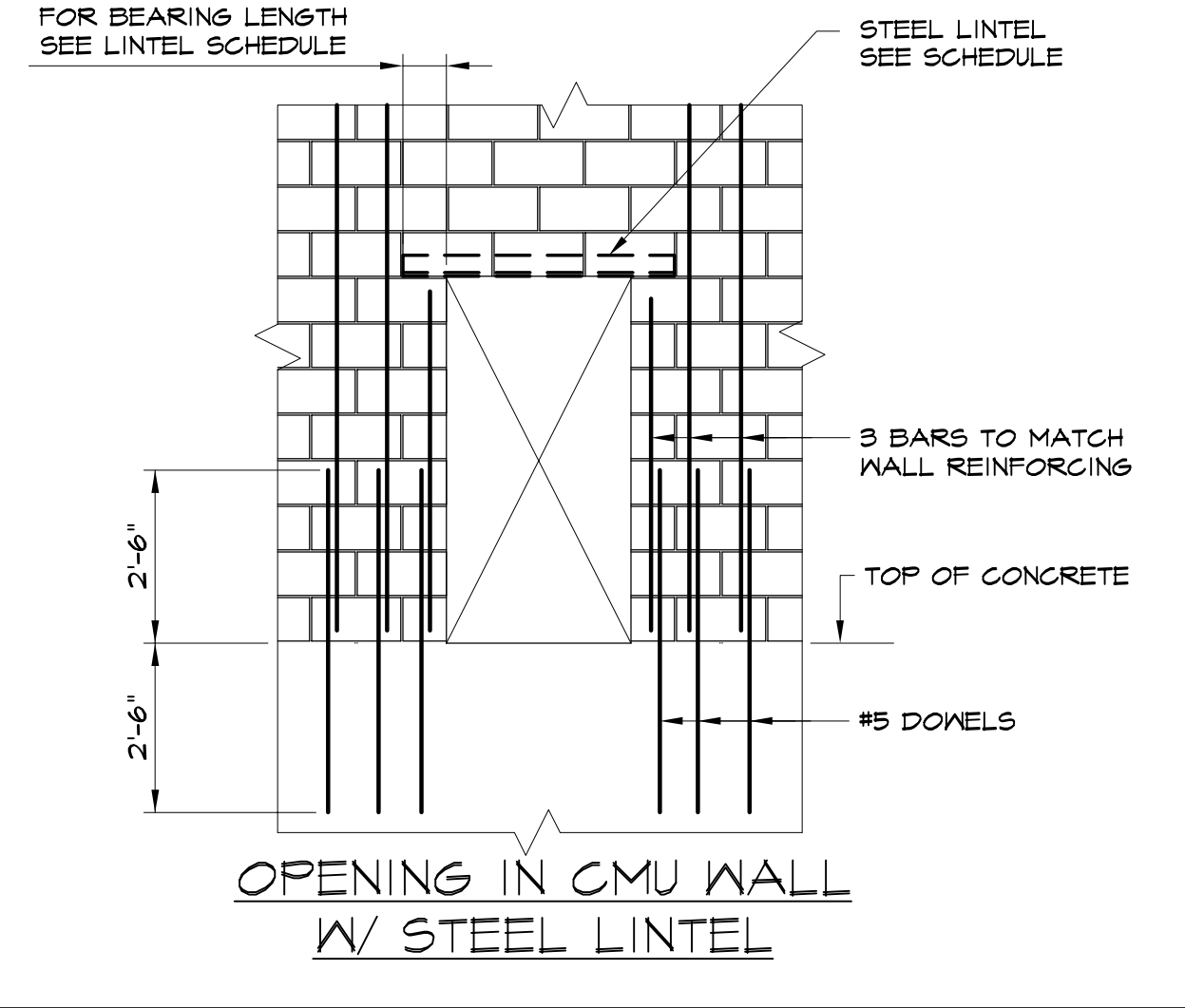


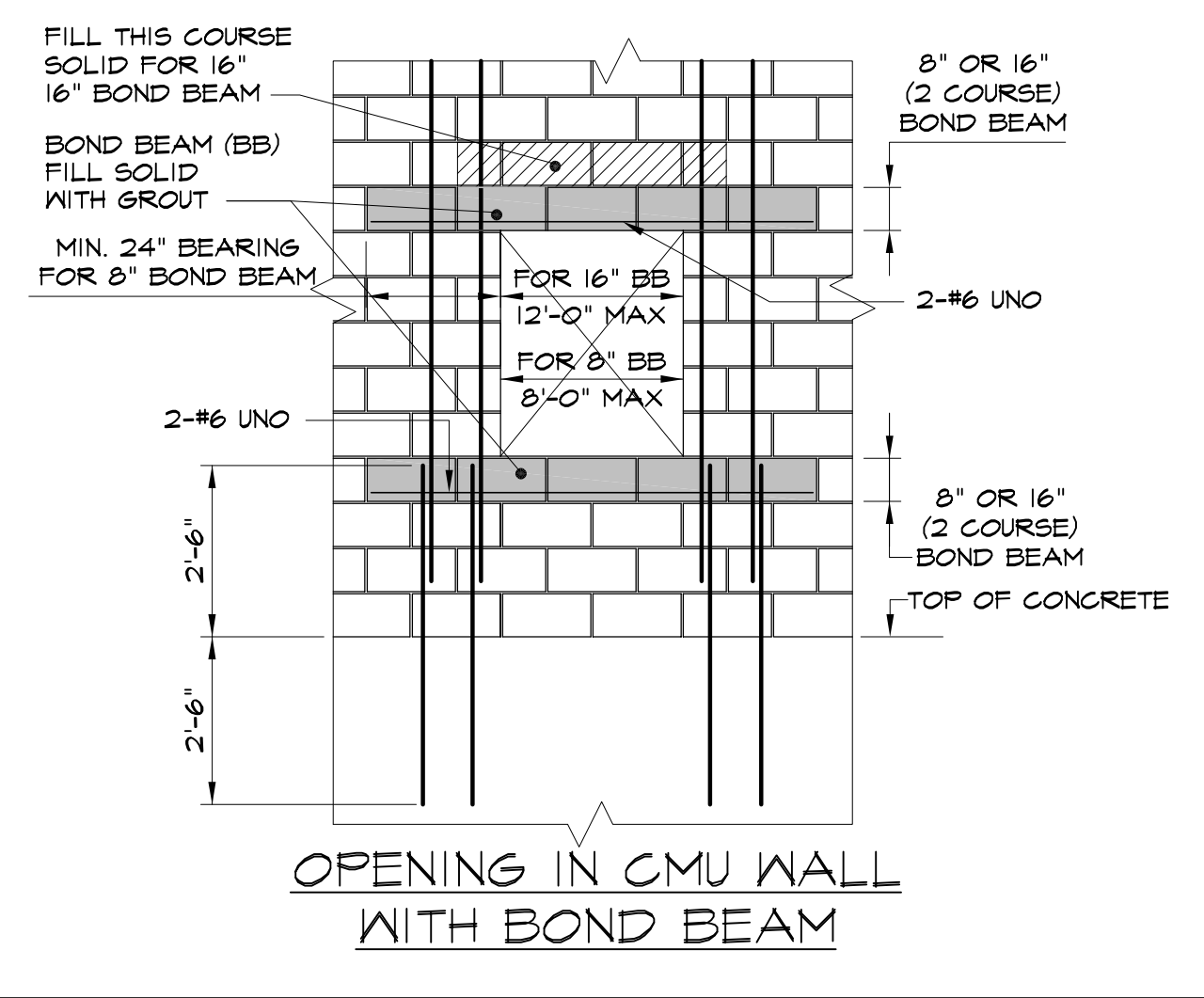
CONTINUOUS FOOTING FOR NON-BEARING WALLS



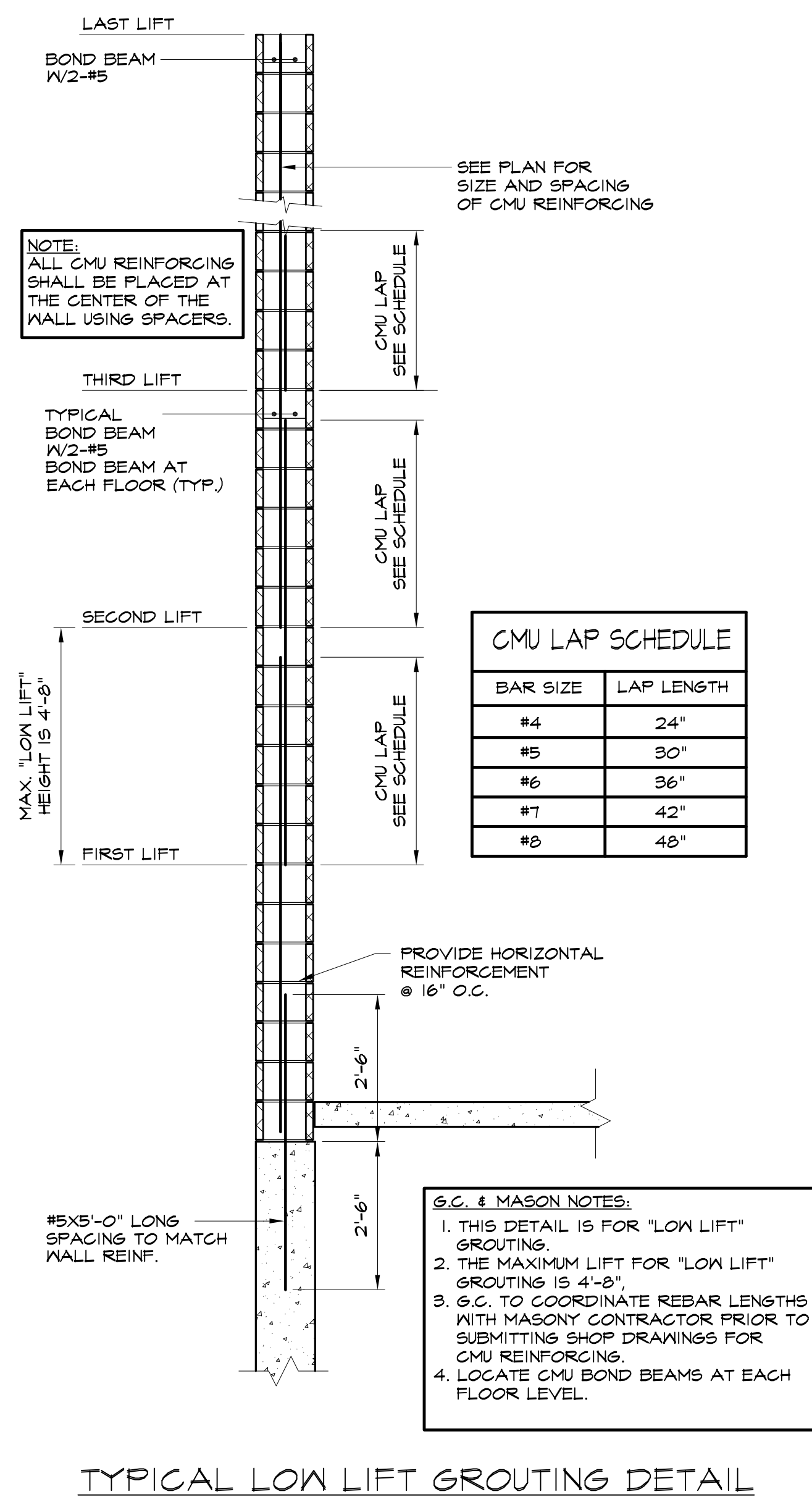
PLAN AT CMU WALL



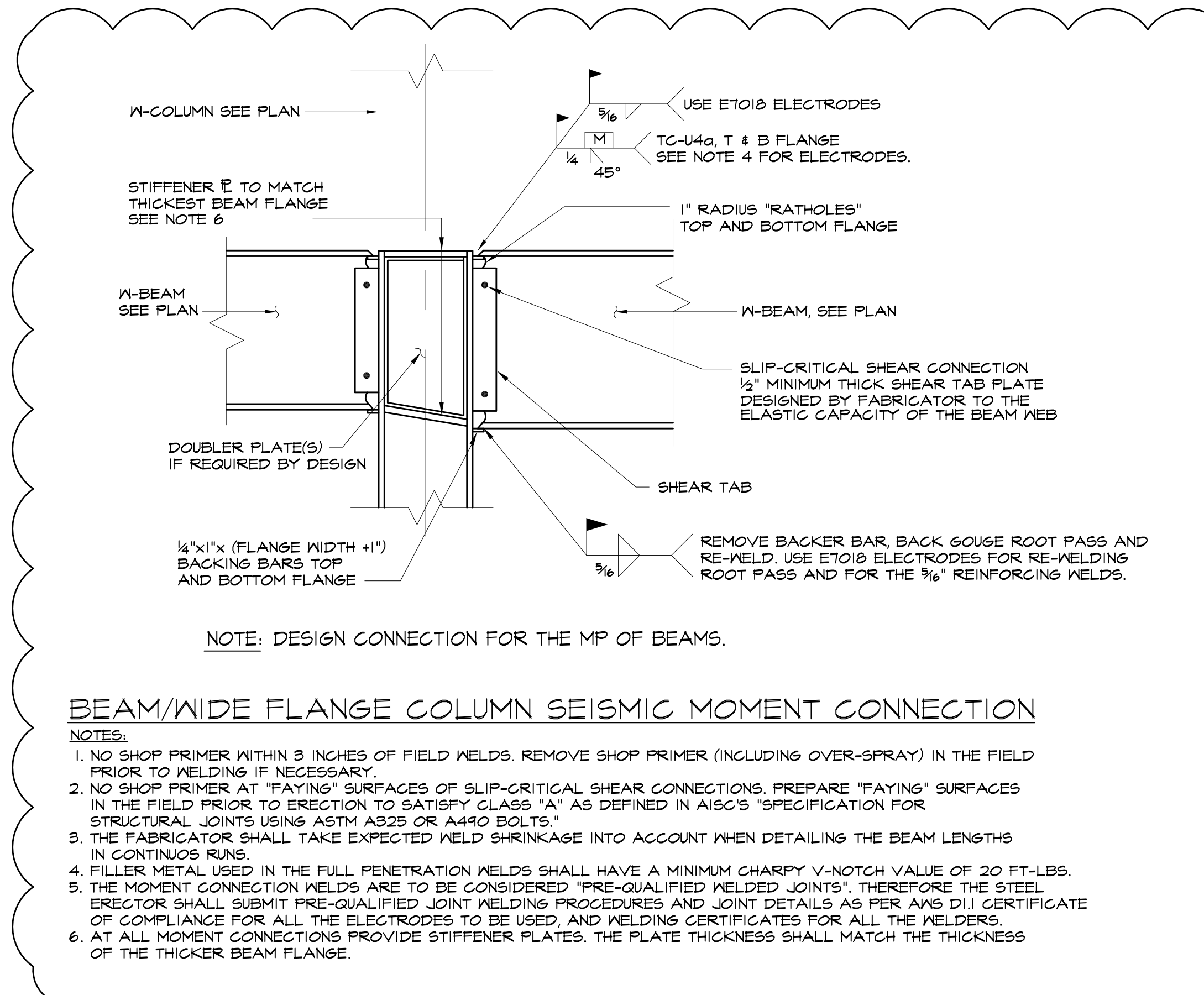
OPENING IN CMU WALL W/ STEEL LINTEL



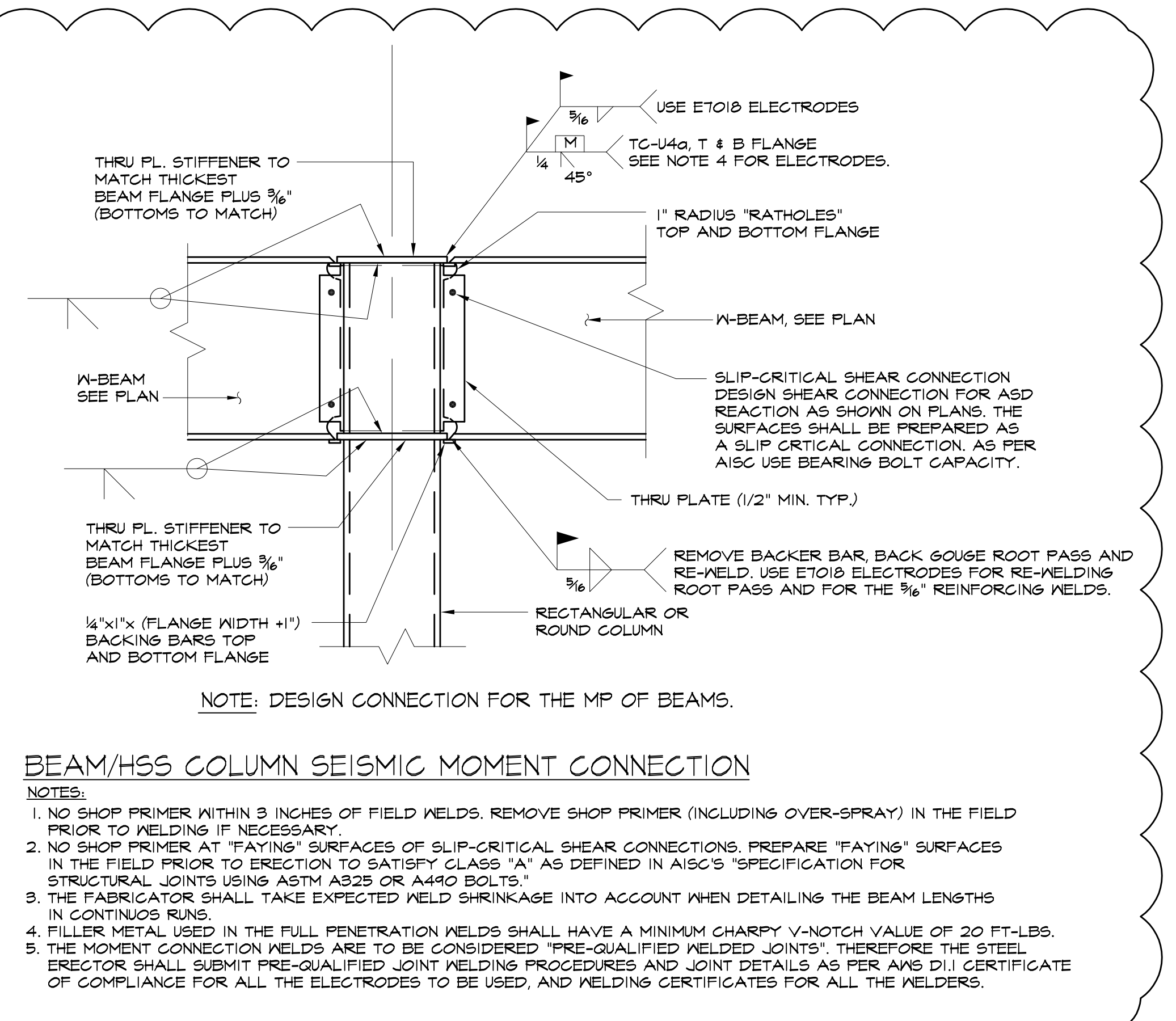
OPENING IN CMU WALL WITH BOND BEAM



TYPICAL LOW LIFT GROUTING DETAIL



BEAM/WIDE FLANGE COLUMN SEISMIC MOMENT CONNECTION



BEAM/HSS COLUMN SEISMIC MOMENT CONNECTION

STATE OF MAINE  
RIMANTAS  
VEITAS  
No. 8478  
LICENSED PROFESSIONAL ENGINEER

Prepared For: **BATEMAN PARTNERS, LLC.**  
470 FORE STREET  
PORTLAND, ME 04101

Consultant: **VEITAS VEITAS engineers**  
680 Green Street, Suite 101  
Portland, Massachusetts 02104  
TEL: (781) 862-2803 FAX: (781) 862-2805

Architect: **ARCHETYPE architects**  
48 Union Wharf Portland, Maine 04101  
(207) 772-6022 Fax (207) 772-4056

Project: **185 FORE STREET**  
185 Fore Street, Portland Maine

Revisions:  
1 05-22-2015 BID SET  
2 11-06-2015 ADDENDUM #3

Date: **16 JUNE, 2014**

Scale: **TYPICAL DETAILS**

**S2.03**