

Prepared For: **BATEMAN PARTNERS, LLC.**
470 FORE STREET
PORTLAND, ME 04101

Consultant: **VEITAS VEITAS engineers**
680 Green Street, Suite 101
Brunswick, Massachusetts 02184
TEL: (781) 862-2803 FAX: (781) 862-2105

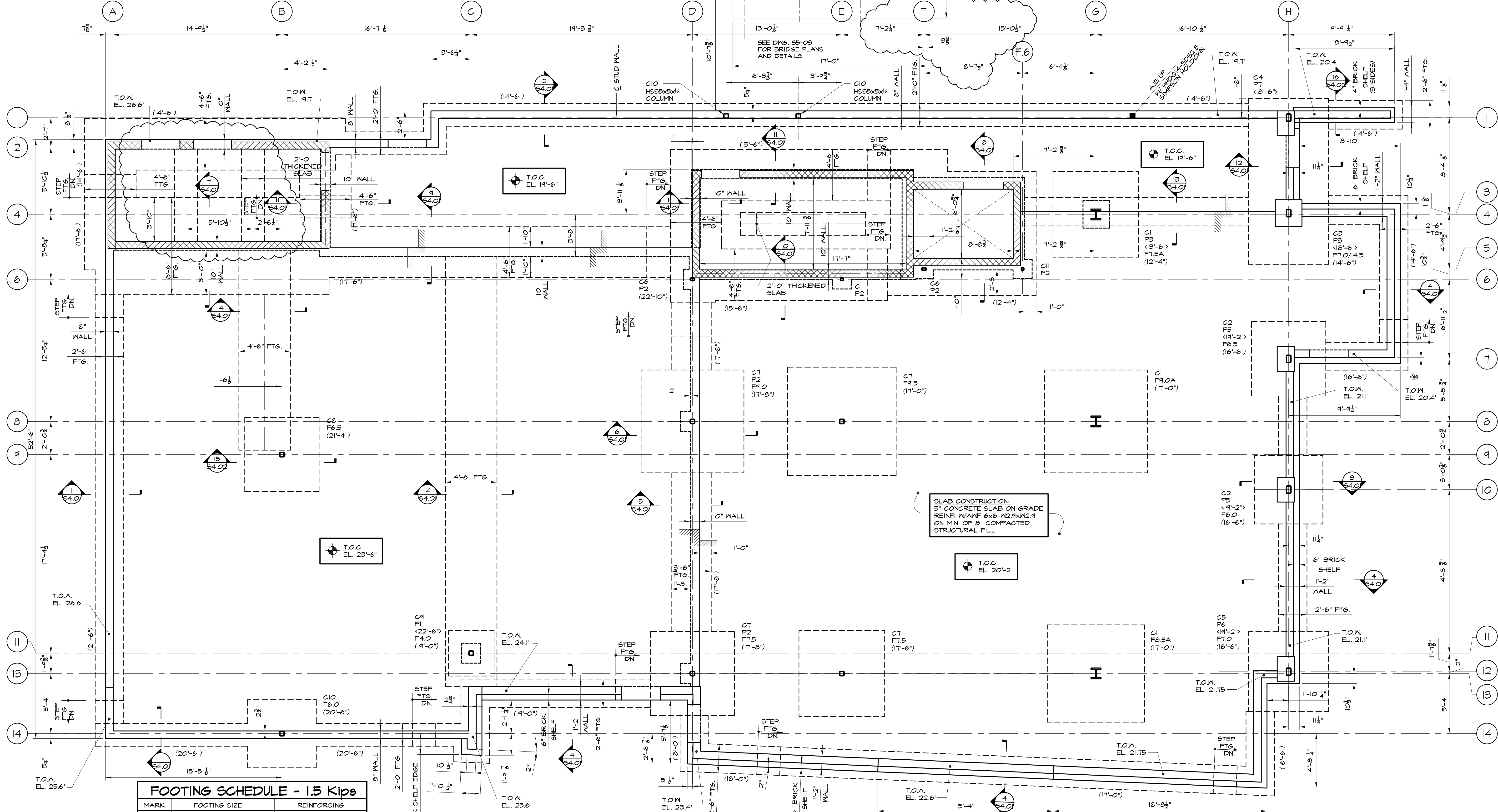
Architect: **ARCHITECTYPPE architects**
48 Union Wharf Portland, Maine 04101
(207) 772-6022 Fax (207) 772-4056

Project: **185 FORE STREET**
185 Fore Street, Portland Maine

| Revisions: | BID SET | REVISIONS |
|------------|------------|-------------|
| 1 | 05-22-2015 | |
| 2 | 09-22-2015 | |
| 3 | 11-06-2015 | ADDENDUM #3 |

Date: **16 JUNE, 2014**
Scale:

FOUNDATION PLAN
S1.01



FOOTING SCHEDULE - 1.5 Kips

| MARK | FOOTING SIZE | REINFORCING |
|-----------|----------------------|---------------------|
| F4.0 | 4'-0"x4'-0"x1'-0" | 5-#4 ENB |
| F4.5 | 4'-6"x4'-6"x1'-0" | 6-#4 ENB |
| F5.0 | 5'-0"x5'-0"x1'-0" | 5-#5 ENB |
| F5.5 | 5'-6"x5'-6"x1'-0" | 6-#5 ENB |
| F6.0 | 6'-0"x6'-0"x1'-0" | 7-#5 ENB |
| F6.5 | 6'-6"x6'-6"x1'-2" | 8-#5 ENB |
| F6.5A | 6'-6"x6'-6"x2'-0" | 7-#7 ENB |
| F7.0 | 7'-0"x7'-0"x1'-2" | 9-#5 ENB |
| F7.0/14.5 | 7'-0"x14'-6"x2'-0" | #6@12" O.C. EN, T&B |
| F7.5 | 7'-6"x7'-6"x1'-4" | 8-#6 ENB |
| F7.5A | 7'-6"x7'-6"x2'-2" | 8-#7 ENB |
| F8.0 | 8'-0"x8'-0"x1'-4" | 9-#6 ENB |
| F8.5 | 8'-6"x8'-6"x1'-6" | 10-#6 ENB |
| F8.5A | 8'-6"x8'-6"x2'-2" | 10-#6 ENB |
| F9.0 | 9'-0"x9'-0"x1'-6" | 9-#7 ENB |
| F9.0A | 9'-0"x9'-0"x2'-0" | 9-#7 ENB |
| F9.5 | 9'-6"x9'-6"x1'-8" | 9-#7 ENB |
| F10.0 | 10'-0"x10'-0"x1'-8" | 11-#7 ENB |
| F10.5 | 10'-6"x10'-6"x1'-8" | 11-#7 ENB |
| F11.0 | 11'-0"x11'-0"x1'-10" | 13-#7 ENB |
| F11.5 | 11'-6"x11'-6"x1'-10" | 14-#7 ENB |
| F12.0 | 12'-0"x12'-0"x2'-0" | 15-#7 ENB |

FOUNDATION PLAN
1/4"=1'-0"

FOUNDATION NOTES:

- FOR TYPICAL DETAILS & GENERAL NOTES SEE DRAWINGS S2.01 TO 2.08.
- SLAB ELEVATION SHALL BE ELEVATION X'-X" U.N.O.
- F... INDICATES FOOTING MARK, FOR FOOTING SIZES & REINFORCING SEE FOOTING SCHEDULE ON THIS DRAWING.
- P... INDICATES PIER TYPE, FOR DETAILS AND SCHEDULE SEE DRAWING S3.01.
- C... INDICATES COLUMN MARK, FOR SIZES SEE COLUMN SCHEDULE ON DRAWING S3.01.
- BOTTOM OF EXTERIOR FOOTING SHALL BE -4'-0" BELOW GRADE UNLESS NOTED THIS: (...).
- TOP OF INTERIOR FOOTING SHALL BE -1'-0" FROM REFERENCE SLAB ELEVATION UNLESS NOTED THIS: (T/F...).
- TOP OF EXTERIOR WALL (T.O.W.) SHALL BE 0" FROM REFERENCE SLAB ELEVATION UNLESS NOTED THIS: "T.O.W. EL.".
- TOP OF EXTERIOR PIER AND TOP OF EXTERIOR WALL PIERS SHALL BE -8" FROM REFERENCE SLAB ELEVATION UNLESS NOTED THIS: (...).
- TOP OF INTERIOR PIERS SHALL BE -1'-0" FROM REFERENCE SLAB ELEVATION UNLESS NOTED THIS: (...).
- (---) INDICATES BOTTOM OF FOOTING ELEVATION.
- (...) INDICATES TOP OF PIER ELEVATION.
- (T/F...) INDICATES TOP OF FOOTING ELEVATION.
- ALL EXPOSED CONCRETE TO BE "RUBBED" FINISH.
- FOR FLOOR DRAIN ELEVATIONS, SLAB DEPRESSIONS AND SLOPING CONCRETE FLOORS SEE ARCHITECTURAL DRAWINGS.
- FOR DIMENSIONS & SLOPES OF RAMPS & SIDEWALKS SEE ARCHITECTURAL & CIVIL DRAWINGS.
- FOR ELEVATIONS OF FOUNDATION WALL PENETRATIONS SEE MECHANICAL AND CIVIL DRAWINGS. SEE DRAWING S2.02 FOR TYPICAL FOOTING DETAIL AT PIPE SLEEVES.
- THE GENERAL CONTRACTOR SHALL COORDINATE DEPTH OF ALL SLAB DEPRESSIONS SHOWN ON PLANS.
- THE EXTERIOR WALL FOOTINGS HAVE BEEN DROPPED AT LOCATIONS OF SEWERS, DRAINS, GAS LINES AND WATERLINES. THE TOP OF FOOTING IS SET AT 6 INCHES PLUS/MINUS LOWER THAN THE PIPE INVERT ELEVATION. THE GENERAL CONTRACTOR SHALL NOTIFY THE ENGINEER IF STEPPED STEPPED FOOTINGS ARE NOT LOCATED AT EXTERIOR WALL PIPE PENETRATIONS.
- FOR LOCATION AND EXTENT OF FOUNDATION INSULATION SEE ARCHITECTURAL DRAWINGS.
- FOR SLOPED SLAB, SPOT ELEVATIONS, AND ADA RAMP REQUIREMENTS SEE ARCHITECTURAL & CIVIL DRAWINGS.