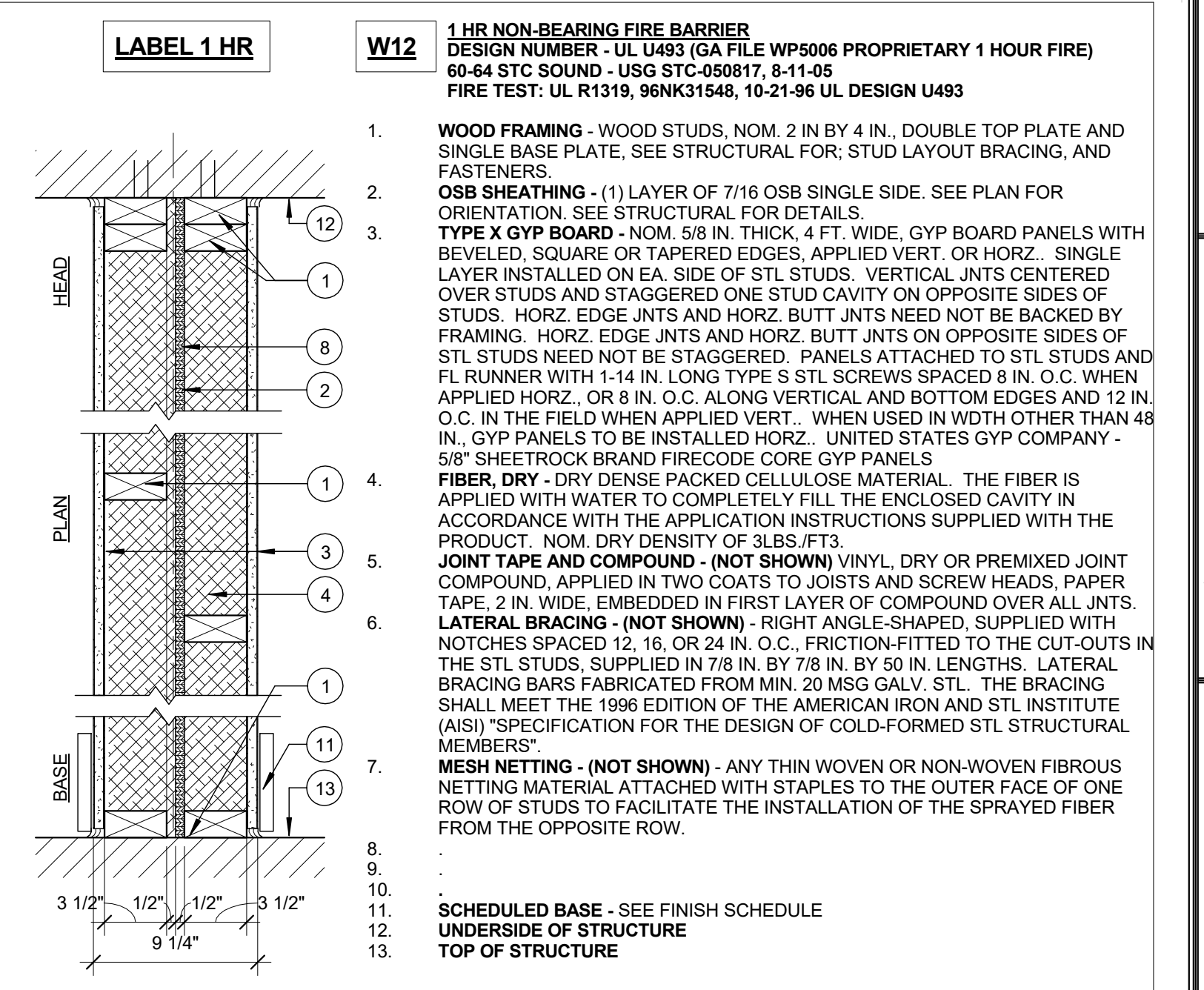
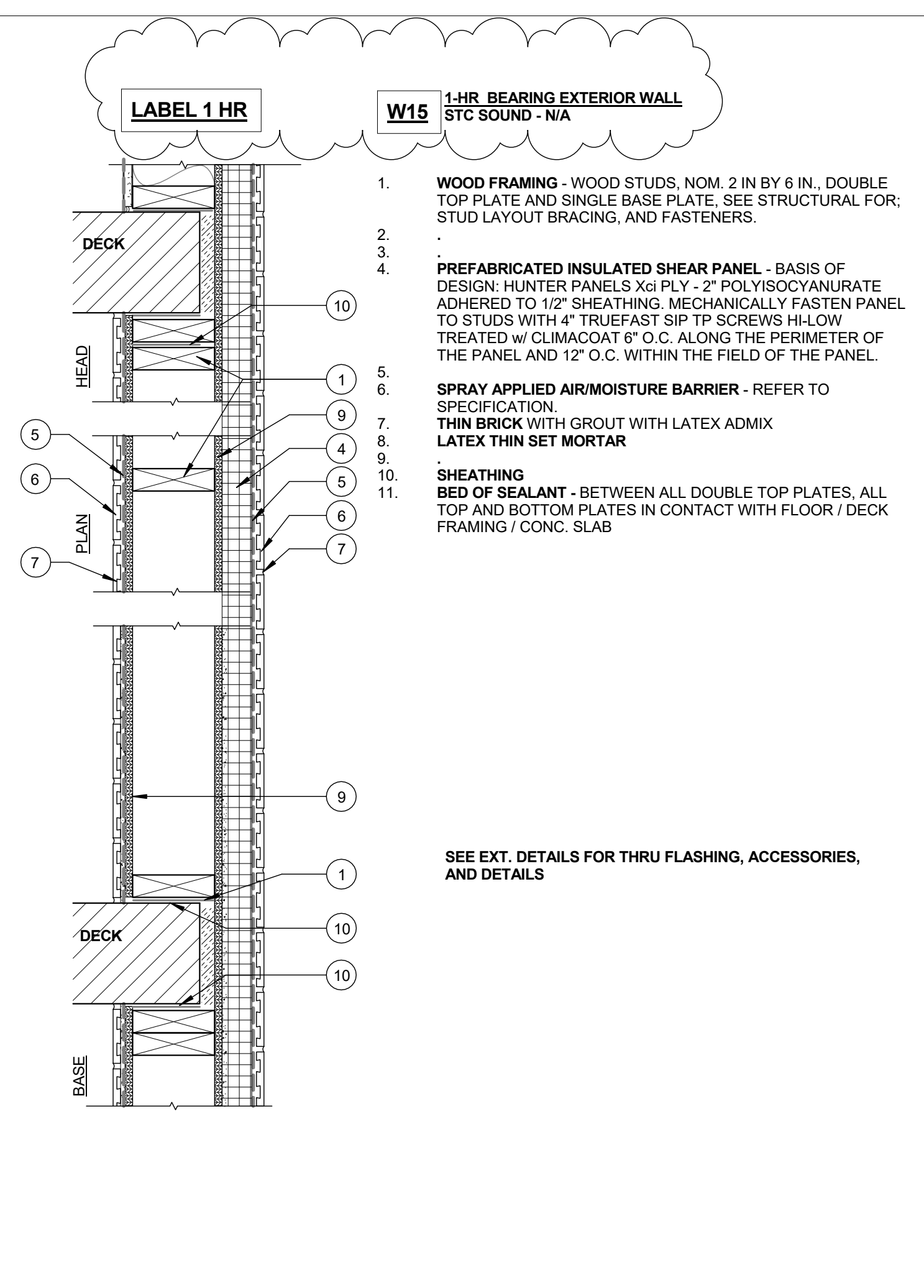


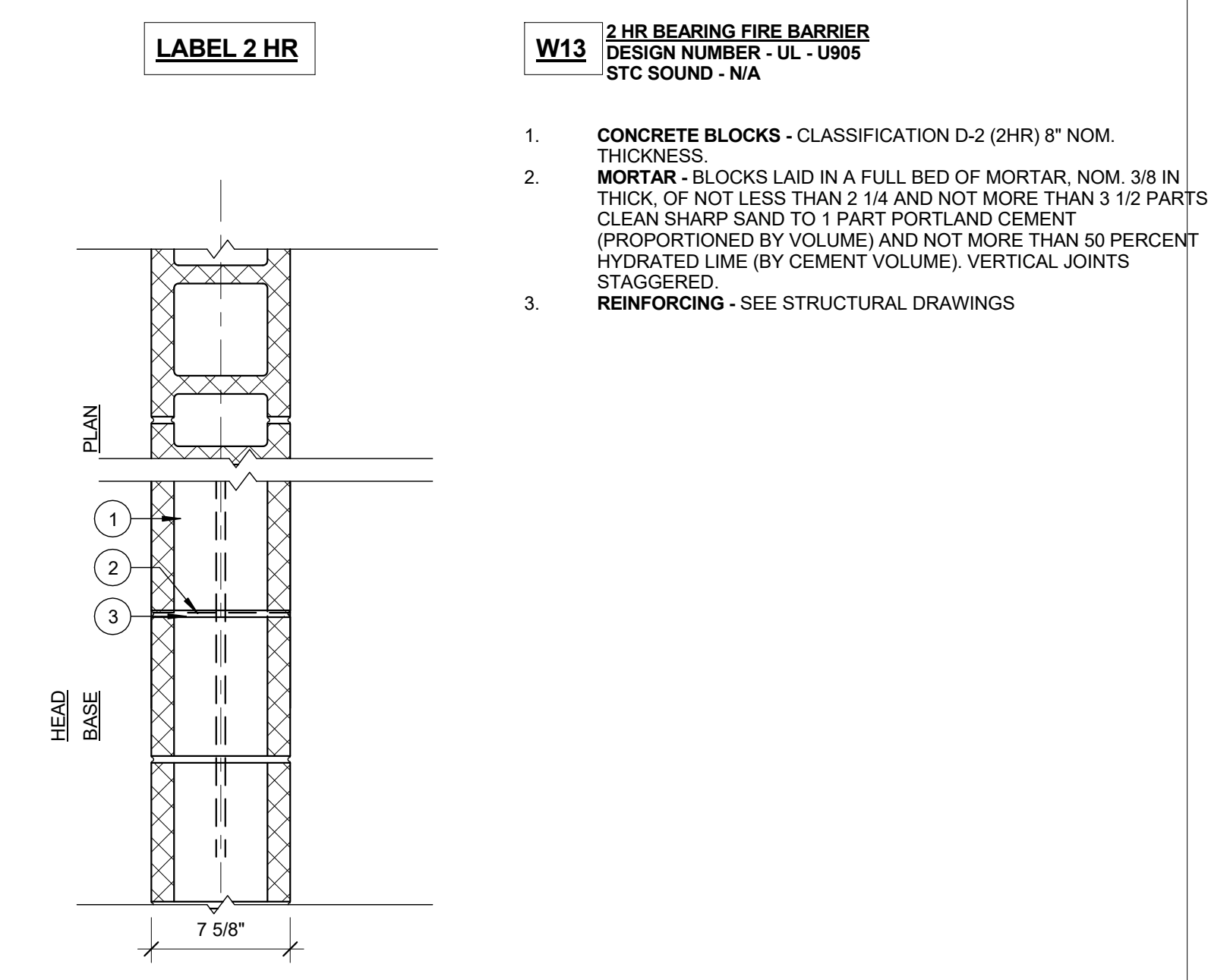
14 | -WALL TYPE 14 - SHAFT WALL ASSEMBLY
1 1/2" = 1'-0" 0 0.5 0.8 1.0 2.0



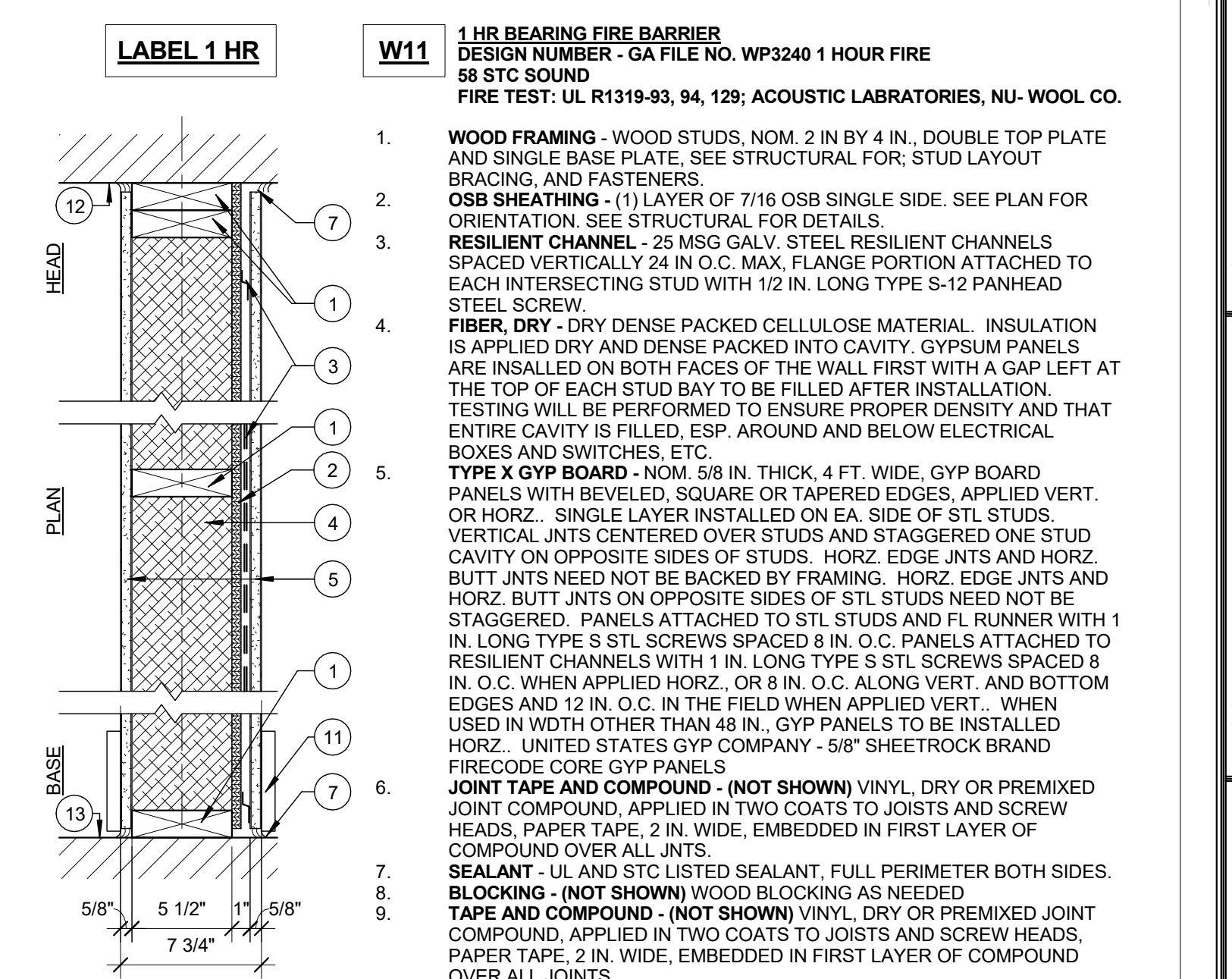
12 | -WALL TYPE 12 - 9 1/4" UNIT DEMISING WALL
1 1/2" = 1'-0" 0 0.5 0.8 1.0 2.0



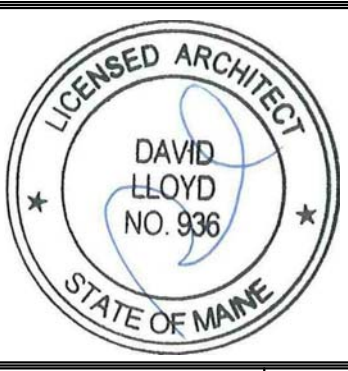
15 | -WALL TYPE 15 - BALCONY WALL
1 1/2" = 1'-0" 0 0.5 0.8 1.0 2.0



13 | -WALL TYPE 13 - CMU SHAFT
1 1/2" = 1'-0" 0 0.5 0.8 1.0 2.0



11 | -WALL TYPE 11 - CORRIDOR BEARING WALL
1 1/2" = 1'-0" 0 0.5 0.8 1.0 2.0


 Prepared For: **BATEMAN PARTNERS, LLC.**
 470 FORE STREET
 PORTLAND, ME 04101
 Consultant: **ARCHETYPE architects**
 48 Union Wharf Portland, Maine 04101
 (207) 772-6022 Fax (207) 772-4056
 Architect: **ARCHETYPE architects**
 48 Union Wharf Portland, Maine 04101
 (207) 772-6022 Fax (207) 772-4056
 Project: **185 Fore Street**
 185 Fore Street, Portland Maine
 Revisions:
 1 05-22-2014 BID SET
 2 06-12-2015 ADDENDUM 1
 3 11-2-2015 RESPONSES TO PERMIT SET
 Scale: **1 1/2" = 1'-0"**
 Date: **NOV. 2, 2015**
WALL TYPES
A4.02