

**BATEMAN PARTNERS, L.L.C.**  
470 FORE STREET  
PORTLAND, ME 04101

Consultant: **ARCHETYPE architects**  
48 Union Wharf Portland, Maine 04101  
(207) 772-6022 Fax (207) 772-4056

Architect: **ARCHETYPE architects**  
48 Union Wharf Portland, Maine 04101  
(207) 772-6022 Fax (207) 772-4056

Project: **185 Fore Street**

Revisions:  
1 05-22-2014  
2 11-2-2015

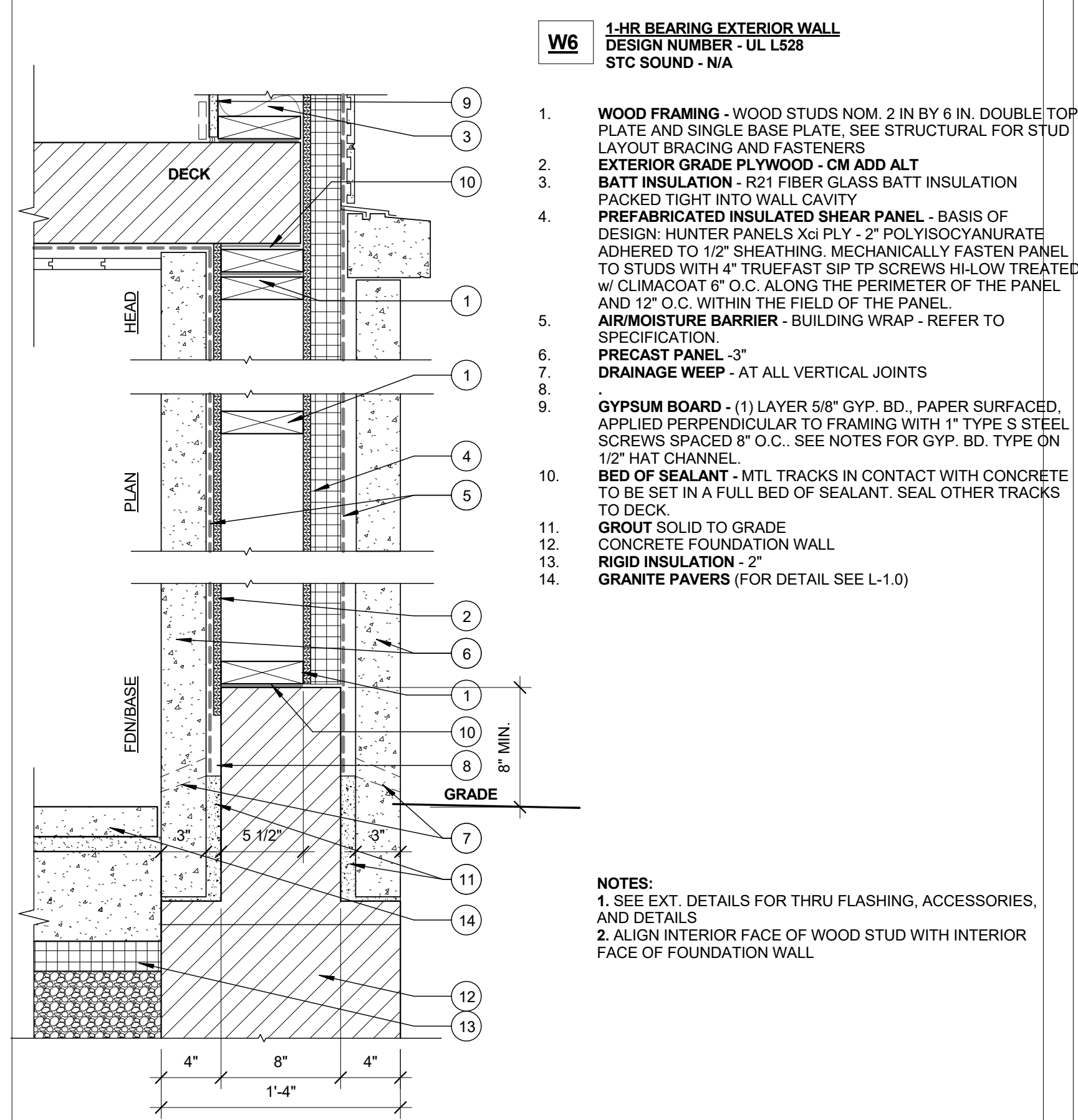
Date: **NOV. 2, 2015**

Scale: **1 1/2" = 1'-0"**

BID SET  
RESPONSES TO  
PERMIT SET

**WALL TYPES**

**A4.01**



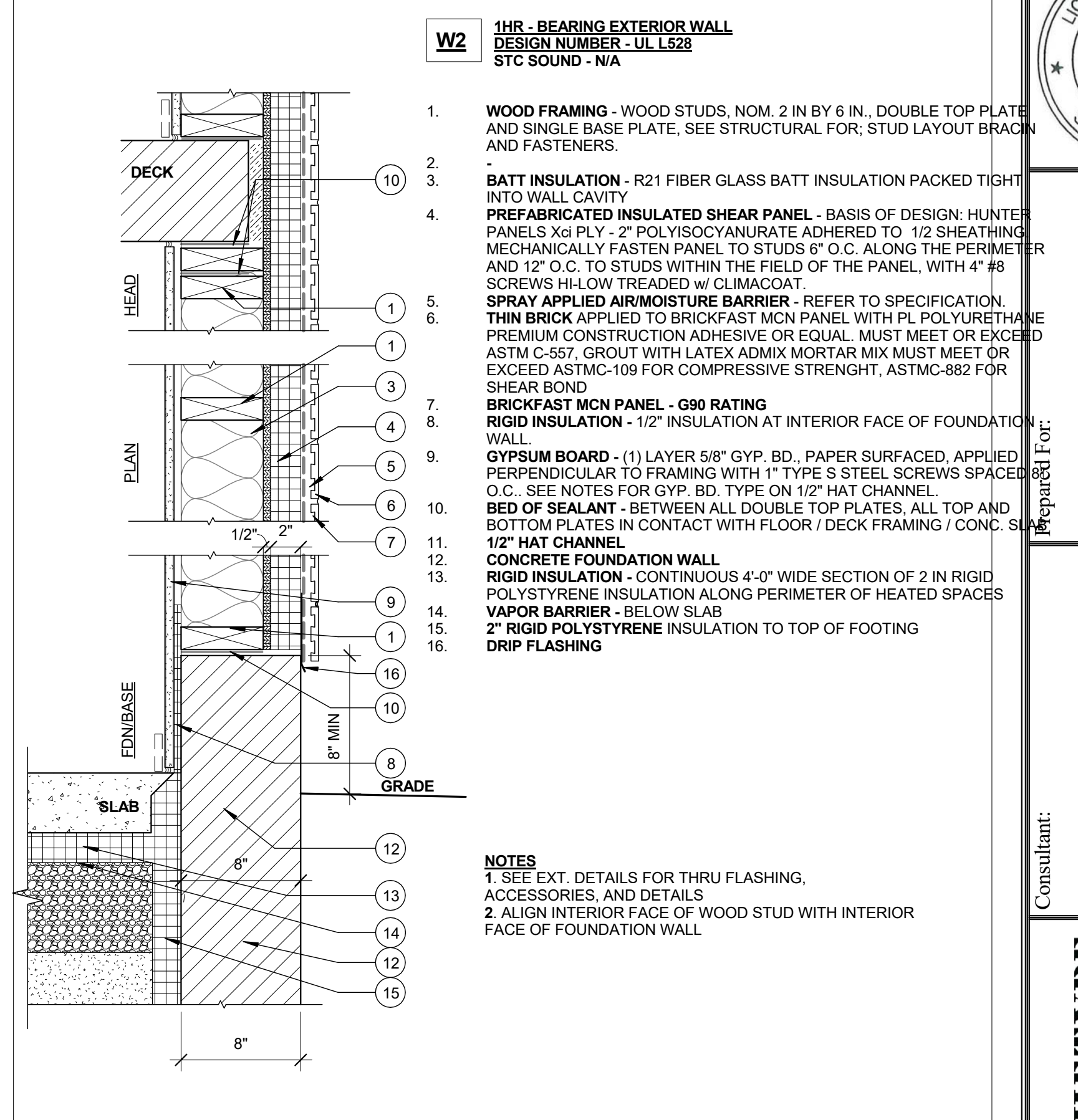
**W6** 1-HR BEARING EXTERIOR WALL  
DESIGN NUMBER - UL L528  
STC SOUND - N/A

- WOOD FRAMING - WOOD STUDS NOM. 2 IN BY 6 IN. DOUBLE TOP PLATE AND SINGLE BASE PLATE. SEE STRUCTURAL FOR STUD LAYOUT BRACING AND FASTENERS.
- EXTERIOR GRADE PLYWOOD - CM ADD ALT
- BATT INSULATION - R21 FIBER GLASS BATT INSULATION PACKED TIGHT INTO WALL CAVITY
- PREFABRICATED INSULATED SHEAR PANEL - BASIS OF DESIGN: HUNTER PANELS XGI PLY - 2" POLYISOCYANURATE ADHERED TO 1/2" SHEATHING. MECHANICALLY FASTEN PANEL TO STUDS WITH 4" TRUEFAST SIP TP SCREWS HI-LOW TREATED w/ CLIMACOAT 8" O.C. ALONG THE PERIMETER OF THE PANEL AND 12" O.C. WITHIN THE FIELD OF THE PANEL.
- AIR/MOISTURE BARRIER - BUILDING WRAP - REFER TO SPECIFICATION.
- PRECAST PANEL - 3"
- DRAINAGE WEEP - AT ALL VERTICAL JOINTS
- 
- GYPSON BOARD - (1) LAYER 5/8" GYP. BD., PAPER SURFACED. APPLIED PERPENDICULAR TO FRAMING WITH 1" TYPE S STEEL SCREWS SPACED 8" O.C.. SEE NOTES FOR GYP. BD. TYPE ON 1/2" HAT CHANNEL
- BED OF SEALANT - MTL TRACKS IN CONTACT WITH CONCRETE TO BE SET IN A FULL BED OF SEALANT. SEAL OTHER TRACKS TO DECK
- GROUT SOLID TO GRADE
- CONCRETE FOUNDATION WALL
- RIGID INSULATION - 2"
- GRANITE PAVERS (FOR DETAIL SEE L-10)

**NOTES:**  
1. SEE EXT. DETAILS FOR THRU FLASHING, ACCESSORIES, AND DETAILS.  
2. ALIGN INTERIOR FACE OF WOOD STUD WITH INTERIOR FACE OF FOUNDATION WALL.

**6** -WALL TYPE 6 - EXTERIOR WALL - PRECAST TWO SIDES  
1 1/2" = 1'-0"

**4** -WALL TYPE 4 - NOT USED  
1 1/2" = 1'-0"

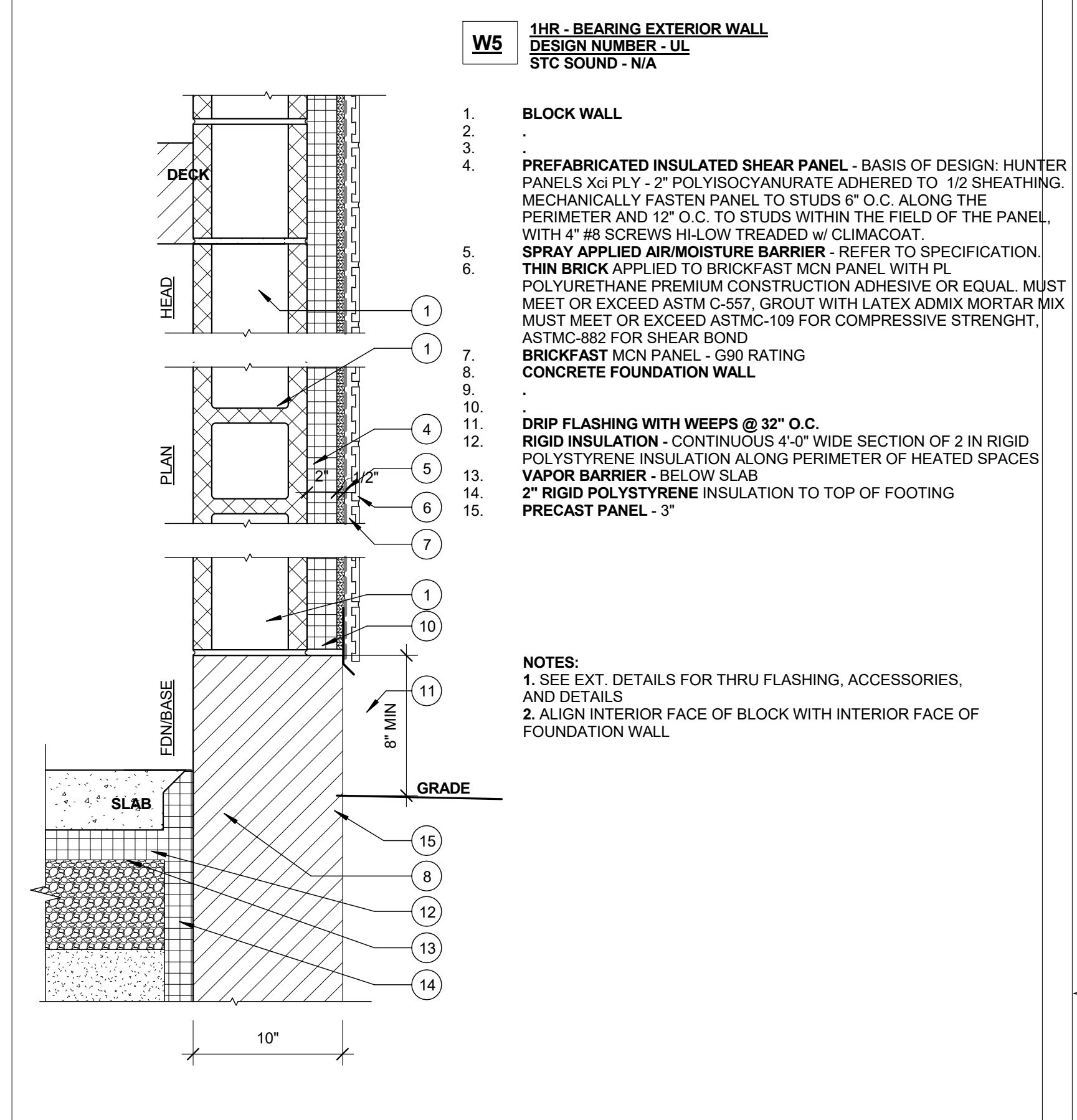


**W2** 1-HR BEARING EXTERIOR WALL  
DESIGN NUMBER - UL L528  
STC SOUND - N/A

- WOOD FRAMING - WOOD STUDS, NOM. 2 IN BY 6 IN. DOUBLE TOP PLATE AND SINGLE BASE PLATE. SEE STRUCTURAL FOR STUD LAYOUT BRACING AND FASTENERS.
- BATT INSULATION - R21 FIBER GLASS BATT INSULATION PACKED TIGHT INTO WALL CAVITY
- PREFABRICATED INSULATED SHEAR PANEL - BASIS OF DESIGN: HUNTER PANELS XGI PLY - 2" POLYISOCYANURATE ADHERED TO 1/2" SHEATHING. MECHANICALLY FASTEN PANEL TO STUDS WITH 4" TRUEFAST SIP TP SCREWS HI-LOW TREATED w/ CLIMACOAT 8" O.C. ALONG THE PERIMETER OF THE PANEL AND 12" O.C. WITHIN THE FIELD OF THE PANEL.
- SPRAY APPLIED AIR/MOISTURE BARRIER - REFER TO SPECIFICATION.
- THIN BRICK APPLIED TO BRICKFAST MCN PANEL WITH PL POLYURETHANE PREMIUM CONSTRUCTION ADHESIVE OR EQUAL. MUST MEET OR EXCEED ASTM C-557, GROUT WITH LATEX ADMIX MORTAR MIX MUST MEET OR EXCEED ASTM C-109 FOR COMPRESSIVE STRENGTH, ASTM C-882 FOR SHEAR BOND
- BRICKFAST MCN PANEL - G90 RATING
- RIGID INSULATION - 1/2" INSULATION AT INTERIOR FACE OF FOUNDATION WALL
- GYPSON BOARD - (1) LAYER 5/8" GYP. BD., PAPER SURFACED, APPLIED PERPENDICULAR TO FRAMING WITH 1" TYPE S STEEL SCREWS SPACED 8" O.C. SEE NOTES FOR GYP. BD. TYPE ON 1/2" HAT CHANNEL
- BED OF SEALANT - BETWEEN ALL DOUBLE TOP PLATES. ALL TOP AND BOTTOM PLATES IN CONTACT WITH FLOOR / DECK FRAMING / CONC. SLAB
- 1/2" HAT CHANNEL
- CONCRETE FOUNDATION WALL
- RIGID INSULATION - CONTINUOUS 4'-0" WIDE SECTION OF 2 IN RIGID POLYSTYRENE INSULATION ALONG PERIMETER OF HEATED SPACES
- VAPOR BARRIER - BELOW SLAB
- 2" RIGID POLYSTYRENE INSULATION TO TOP OF FOOTING
- DRIP FLASHING

**NOTES:**  
1. SEE EXT. DETAILS FOR THRU FLASHING, ACCESSORIES, AND DETAILS.  
2. ALIGN INTERIOR FACE OF WOOD STUD WITH INTERIOR FACE OF FOUNDATION WALL.

**2** -WALL TYPE 2 - EXTERIOR STUD WALL - THIN BRICK  
1 1/2" = 1'-0"

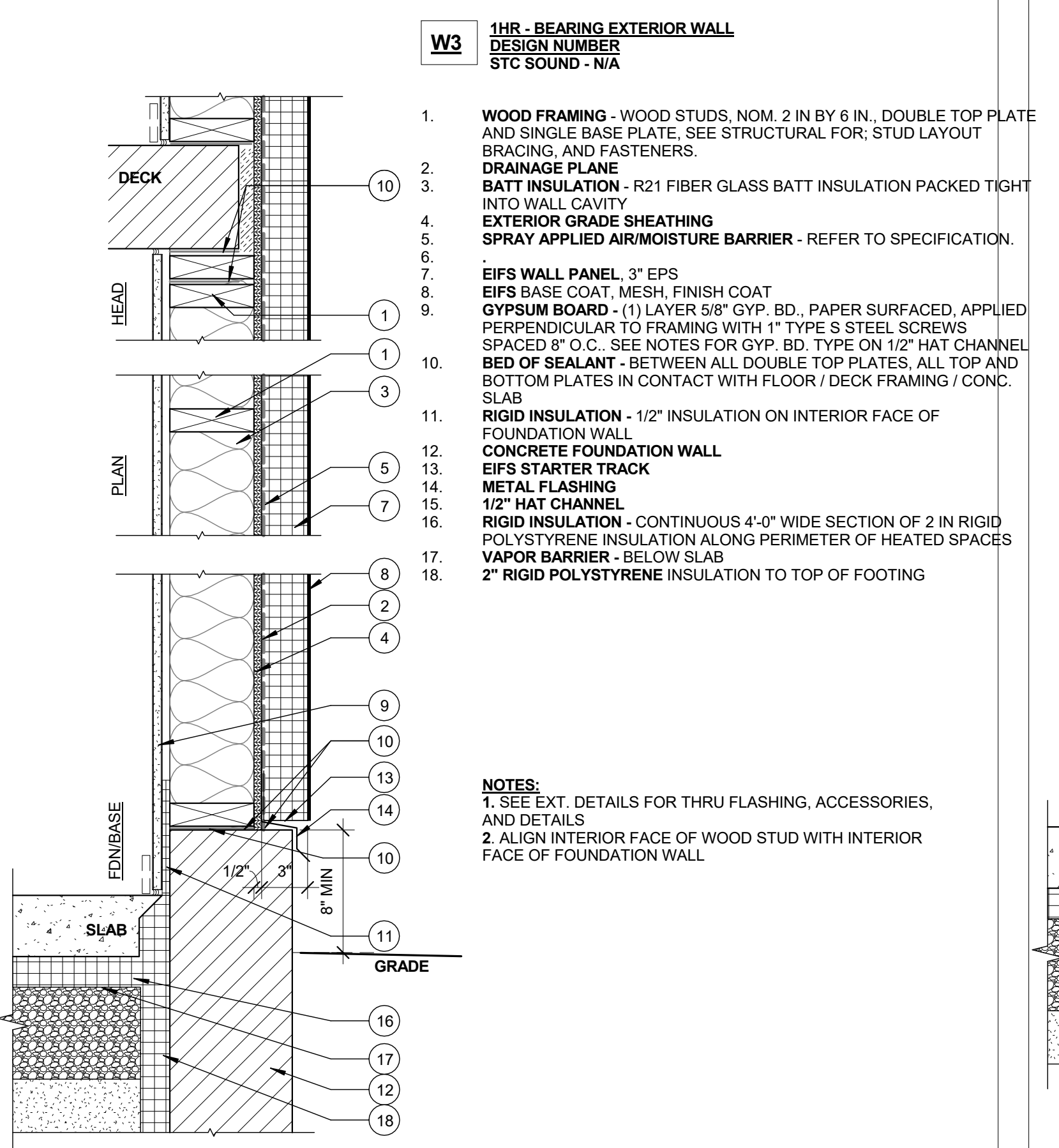


**W5** 1-HR BEARING EXTERIOR WALL  
DESIGN NUMBER - UL L528  
STC SOUND - N/A

- BLOCK WALL
- 
- 
- PREFABRICATED INSULATED SHEAR PANEL - BASIS OF DESIGN: HUNTER PANELS XGI PLY - 2" POLYISOCYANURATE ADHERED TO 1/2" SHEATHING. MECHANICALLY FASTEN PANEL TO STUDS 8" O.C. ALONG THE PERIMETER AND 12" O.C. TO STUDS WITHIN THE FIELD OF THE PANEL, WITH 4" #8 SCREWS HI-LOW TREATED w/ CLIMACOAT.
- SPRAY APPLIED AIR/MOISTURE BARRIER - REFER TO SPECIFICATION.
- THIN BRICK APPLIED TO BRICKFAST MCN PANEL WITH PL POLYURETHANE PREMIUM CONSTRUCTION ADHESIVE OR EQUAL. MUST MEET OR EXCEED ASTM C-557, GROUT WITH LATEX ADMIX MORTAR MIX MUST MEET OR EXCEED ASTM C-109 FOR COMPRESSIVE STRENGTH, ASTM C-882 FOR SHEAR BOND
- BRICKFAST MCN PANEL - G90 RATING
- CONCRETE FOUNDATION WALL
- 
- 
- DRIP FLASHING WITH WEEPS @ 32" O.C.
- RIGID INSULATION - CONTINUOUS 4'-0" WIDE SECTION OF 2 IN RIGID POLYSTYRENE INSULATION ALONG PERIMETER OF HEATED SPACES
- VAPOR BARRIER - BELOW SLAB
- 2" RIGID POLYSTYRENE INSULATION TO TOP OF FOOTING
- PRECAST PANEL - 3"

**NOTES:**  
1. SEE EXT. DETAILS FOR THRU FLASHING, ACCESSORIES, AND DETAILS.  
2. ALIGN INTERIOR FACE OF BLOCK WITH INTERIOR FACE OF FOUNDATION WALL.

**5** -WALL TYPE 5 - EXTERIOR BLOCK WALL - THIN BRICK  
1 1/2" = 1'-0"

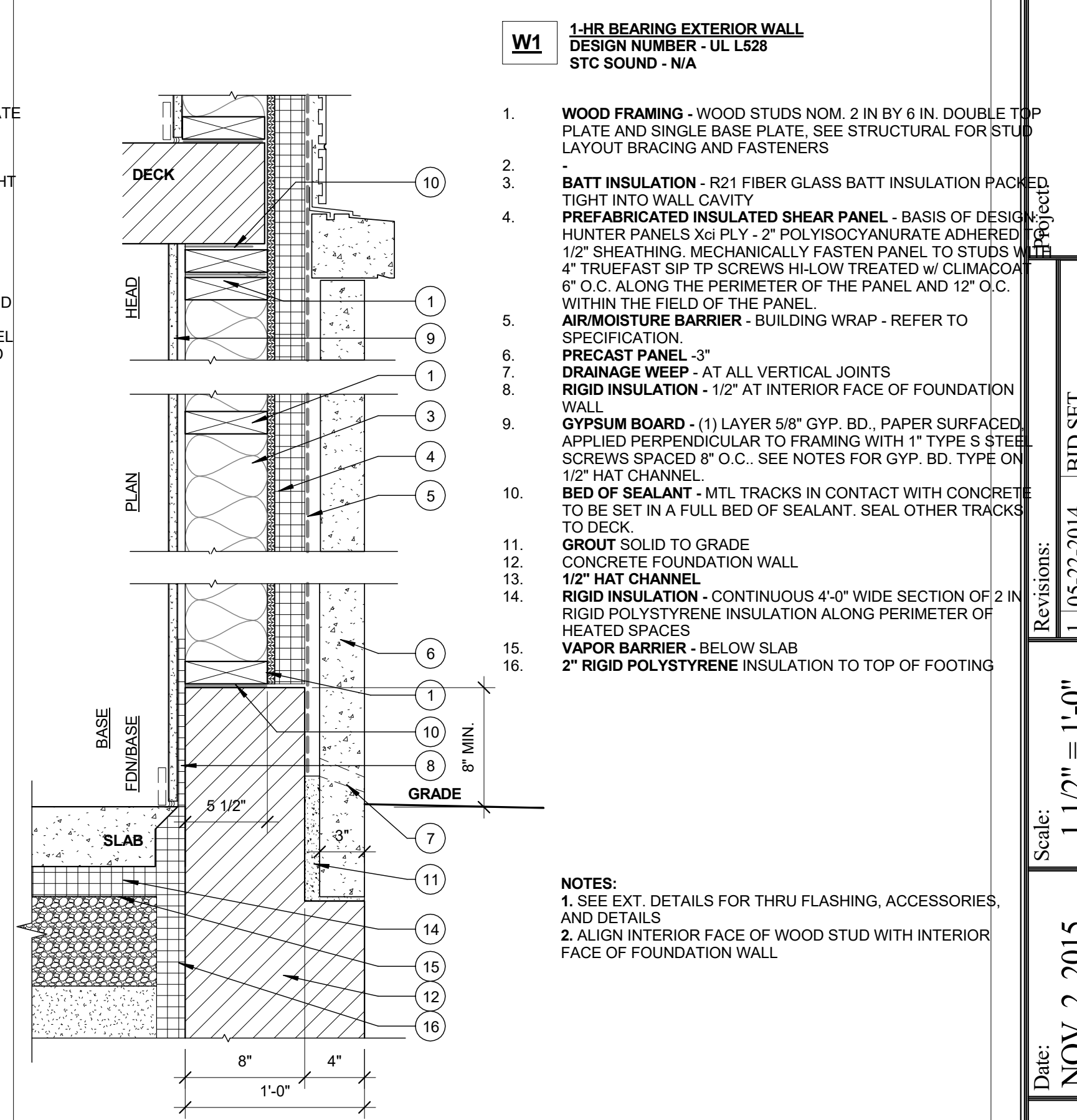


**W3** 1-HR BEARING EXTERIOR WALL  
DESIGN NUMBER - UL L528  
STC SOUND - N/A

- WOOD FRAMING - WOOD STUDS, NOM. 2 IN BY 6 IN. DOUBLE TOP PLATE AND SINGLE BASE PLATE. SEE STRUCTURAL FOR STUD LAYOUT BRACING AND FASTENERS.
- DRAINAGE PLANE
- BATT INSULATION - R21 FIBER GLASS BATT INSULATION PACKED TIGHT INTO WALL CAVITY
- EXTERIOR GRADE SHEATHING
- SPRAY APPLIED AIR/MOISTURE BARRIER - REFER TO SPECIFICATION.
- 
- EIFS WALL PANEL - 3" EPS
- EIFS BASE COAT, MESH, FINISH COAT
- GYPSON BOARD - (1) LAYER 5/8" GYP. BD., PAPER SURFACED, APPLIED PERPENDICULAR TO FRAMING WITH 1" TYPE S STEEL SCREWS SPACED 8" O.C. SEE NOTES FOR GYP. BD. TYPE ON 1/2" HAT CHANNEL
- BED OF SEALANT - BETWEEN ALL DOUBLE TOP PLATES. ALL TOP AND BOTTOM PLATES IN CONTACT WITH FLOOR / DECK FRAMING / CONC. SLAB
- RIGID INSULATION - 1/2" INSULATION ON INTERIOR FACE OF FOUNDATION WALL
- CONCRETE FOUNDATION WALL
- EIFS STARTER TRACK
- METAL FLASHING
- 1/2" HAT CHANNEL
- RIGID INSULATION - CONTINUOUS 4'-0" WIDE SECTION OF 2 IN RIGID POLYSTYRENE INSULATION ALONG PERIMETER OF HEATED SPACES
- VAPOR BARRIER - BELOW SLAB
- 2" RIGID POLYSTYRENE INSULATION TO TOP OF FOOTING

**NOTES:**  
1. SEE EXT. DETAILS FOR THRU FLASHING, ACCESSORIES, AND DETAILS.  
2. ALIGN INTERIOR FACE OF WOOD STUD WITH INTERIOR FACE OF FOUNDATION WALL.

**3** -WALL TYPE 3 - EXTERIOR STUD WALL - EIFS  
1 1/2" = 1'-0"



**W1** 1-HR BEARING EXTERIOR WALL  
DESIGN NUMBER - UL L528  
STC SOUND - N/A

- WOOD FRAMING - WOOD STUDS, NOM. 2 IN BY 6 IN. DOUBLE TOP PLATE AND SINGLE BASE PLATE. SEE STRUCTURAL FOR STUD LAYOUT BRACING AND FASTENERS.
- BATT INSULATION - R21 FIBER GLASS BATT INSULATION PACKED TIGHT INTO WALL CAVITY
- PREFABRICATED INSULATED SHEAR PANEL - BASIS OF DESIGN: HUNTER PANELS XGI PLY - 2" POLYISOCYANURATE ADHERED TO 1/2" SHEATHING. MECHANICALLY FASTEN PANEL TO STUDS WITH 4" TRUEFAST SIP TP SCREWS HI-LOW TREATED w/ CLIMACOAT 8" O.C. ALONG THE PERIMETER OF THE PANEL AND 12" O.C. WITHIN THE FIELD OF THE PANEL.
- AIR/MOISTURE BARRIER - BUILDING WRAP - REFER TO SPECIFICATION.
- PRECAST PANEL - 3"
- DRAINAGE WEEP - AT ALL VERTICAL JOINTS
- RIGID INSULATION - 1/2" AT INTERIOR FACE OF FOUNDATION WALL
- GYPSON BOARD - (1) LAYER 5/8" GYP. BD., PAPER SURFACED, APPLIED PERPENDICULAR TO FRAMING WITH 1" TYPE S STEEL SCREWS SPACED 8" O.C. SEE NOTES FOR GYP. BD. TYPE ON 1/2" HAT CHANNEL
- BED OF SEALANT - MTL TRACKS IN CONTACT WITH CONCRETE TO BE SET IN A FULL BED OF SEALANT. SEAL OTHER TRACKS TO DECK
- GROUT SOLID TO GRADE
- CONCRETE FOUNDATION WALL
- 1/2" HAT CHANNEL
- RIGID INSULATION - CONTINUOUS 4'-0" WIDE SECTION OF 2 IN RIGID POLYSTYRENE INSULATION ALONG PERIMETER OF HEATED SPACES
- VAPOR BARRIER - BELOW SLAB
- 2" RIGID POLYSTYRENE INSULATION TO TOP OF FOOTING

**NOTES:**  
1. SEE EXT. DETAILS FOR THRU FLASHING, ACCESSORIES, AND DETAILS.  
2. ALIGN INTERIOR FACE OF WOOD STUD WITH INTERIOR FACE OF FOUNDATION WALL.

**1** -WALL TYPE 1 - EXTERIOR WALL - PRECAST  
1 1/2" = 1'-0"