

Prepared For:
BATEMAN PARTNERS, LLC.
470 FORE STREET
PORTLAND, ME 04101

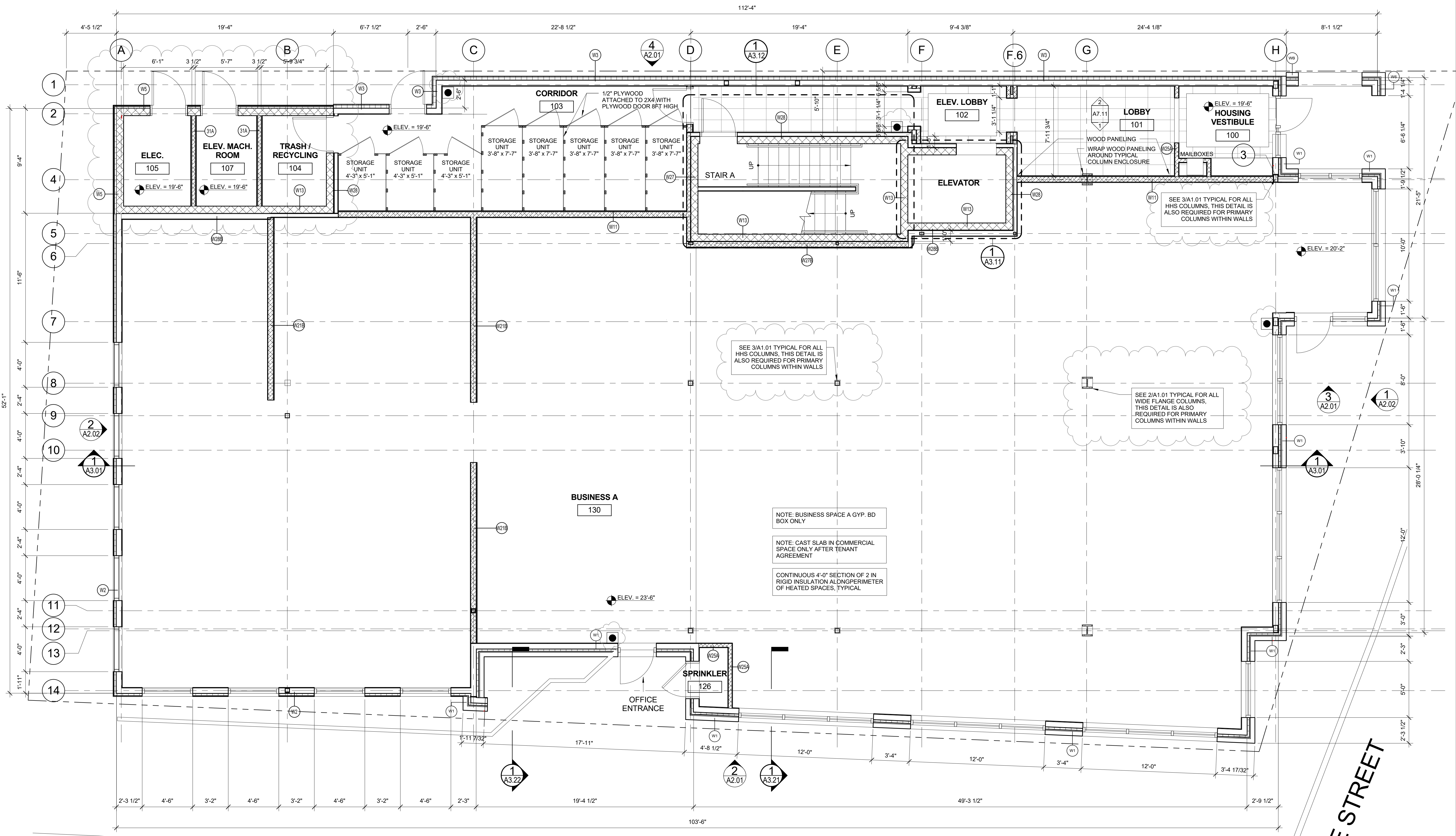
Consultant:
ARCHETYPE architects
48 Union Wharf Portland, Maine 04101
(207) 772-6022 Fax (207) 772-4056

Architect:
185 Fore Street
185 Fore Street, Portland Maine

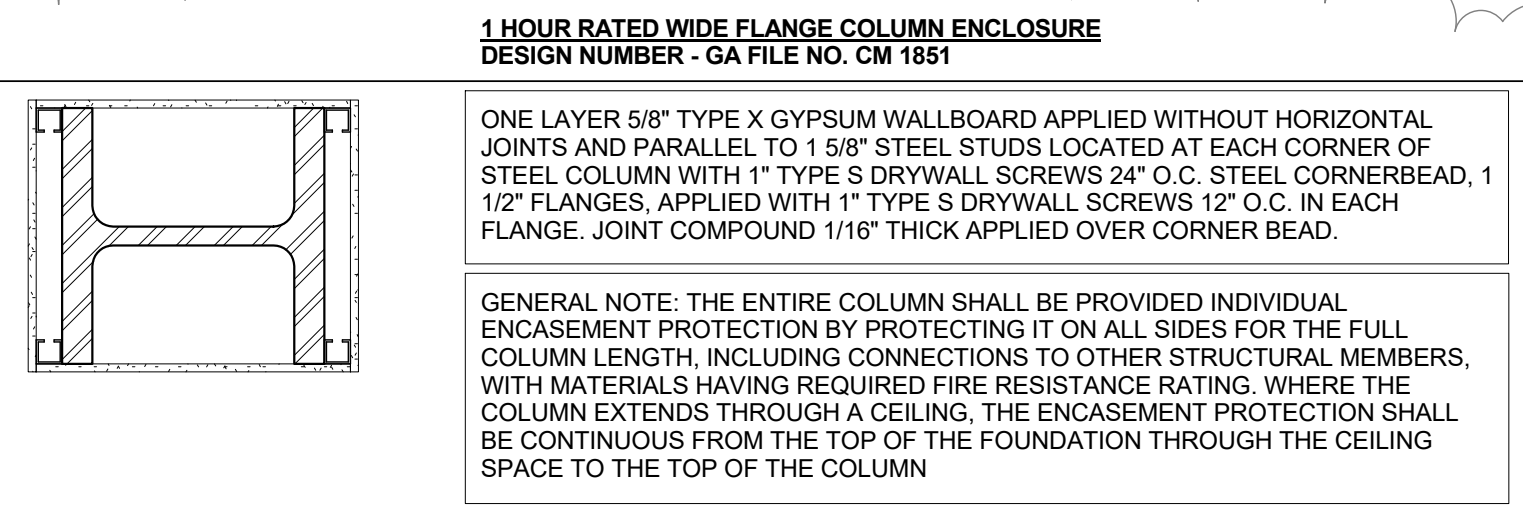
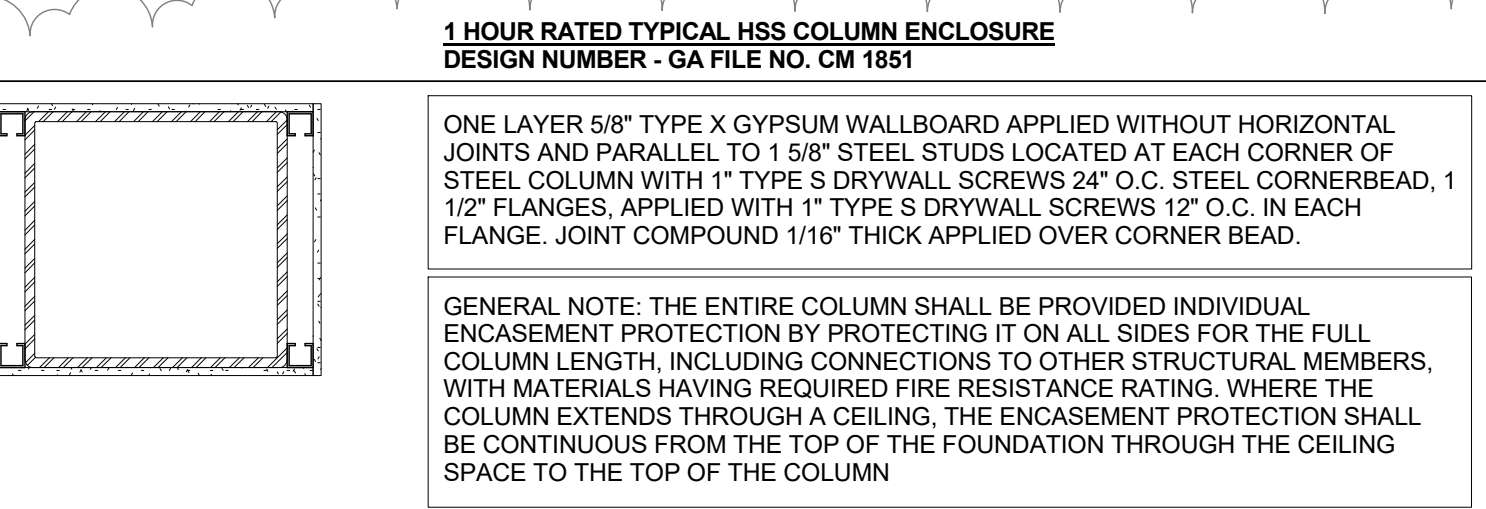
Project:
185 Fore Street

Revisions:
1 05-22-2014 BID SET
2 06-12-2015 ADDENDUM 1
3 11-2-2015 RESPONSES TO PERMIT SET

Date: **NOV. 2, 2015**
Scale: **As indicated**
FIRST FLOOR PLAN



1 | 1ST FLOOR
1/4" = 1'-0"



GROSS SQUARE FOOTAGE
FIRST FLOOR - 5,905 SQ. FT.
SECOND FLOOR - 5,451 SQ. FT.
THIRD FLOOR - 5,475 SQ. FT.
FOURTH FLOOR - 5,258 SQ. FT.
MEZZANINE - 1,187 SQ. FT.
TOTAL - 23,279 SQ. FT.

COMMERCIAL SQUARE FOOTAGE
4,486 SF
MEASUREMENTS PER BOMA FLOOR RENTABLE AREA
- TO COMM. SPACE SIDE OF SHEETROCK
- CENTER LINE OF GLAZING

UNIT SQUARE FOOTAGE
UNIT 201 - 1,587 GSF UNIT 301 - 1,522 GSF UNIT 401 - 2,702 GSF
UNIT 202 - 1,603 GSF UNIT 302 - 1,606 GSF UNIT 402 - 2,801 GSF
UNIT 203 - 1,381 GSF UNIT 303 - 1,381 GSF
MEZZANINE 401 - 569 GSF
244 GSF (EXCL. OPEN TO BELOW AREA)
MEZZANINE 402 - 583 GSF
278 GSF (EXCL. OPEN TO BELOW AREA)

NOTE: UNIT S. F. MEASUREMENTS TAKEN:
TO CORRIDOR SIDE SHEETROCK TO STAIR AND ELEVATOR SHAFT SIDE OF CMU TO CENTER OF WALL BETWEEN UNITS TO OUTSIDE OF EXTERIOR WALL

A1.01