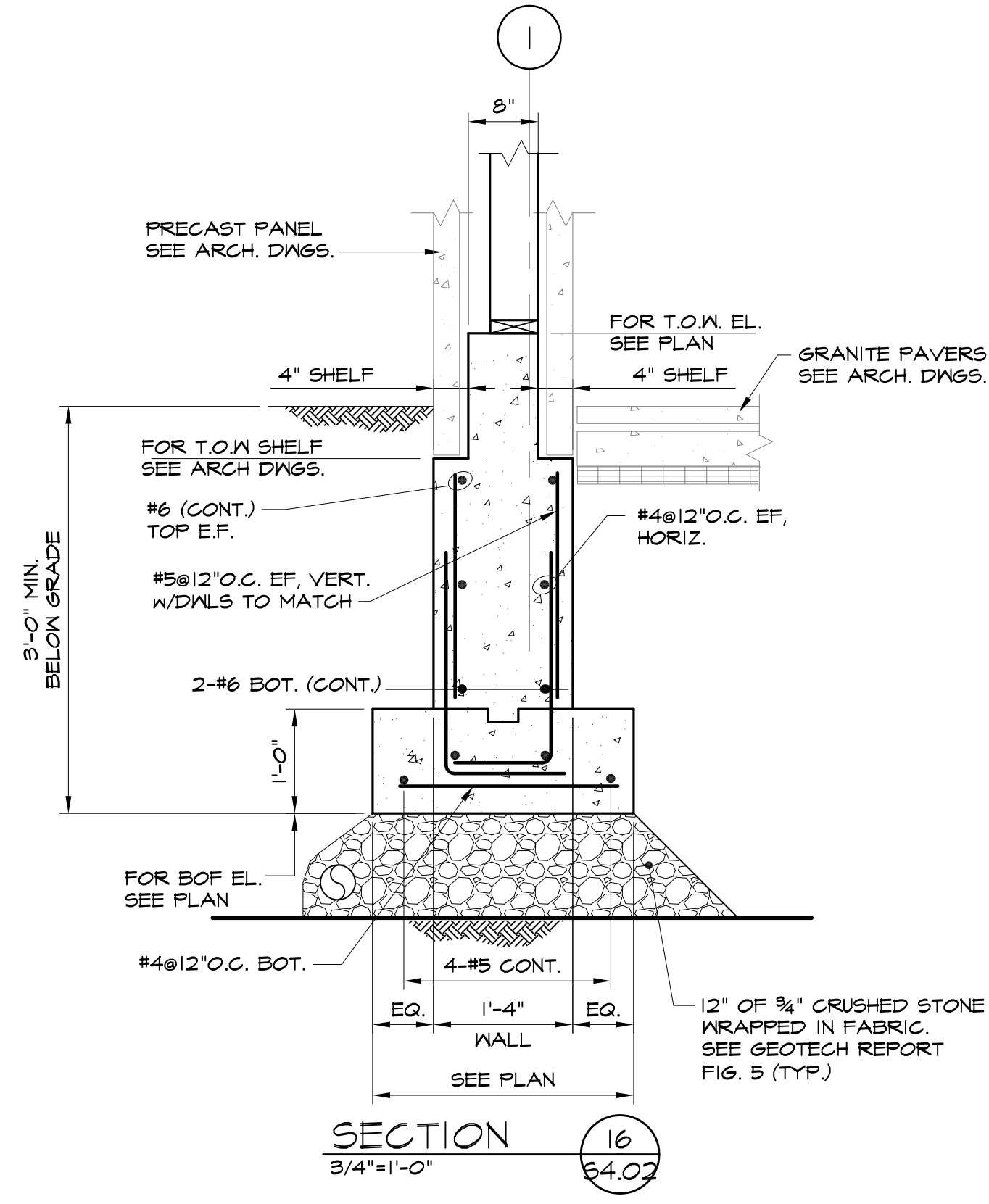
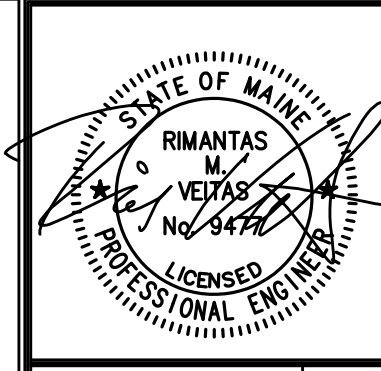


SECTION 15
3/4" = 1'-0"



SECTION 16
3/4" = 1'-0"



Prepared For:
BATEMAN PARTNERS, LLC.
470 FORE STREET
PORTLAND, ME 04101

Consultant:
VEITAS VEITAS
engineers
627 Granite Street, Suite 10184
Portland, ME 04104
TEL: 735.843.2883 FAX: 735.843.2800

Architect:
ARCHETYPE
architects
48 Union Wharf Portland, Maine 04101
(207) 772-6022 Fax (207) 772-4056

Project:
185 FORE STREET
185 Fore Street, Portland Maine

Revisions:
1 05-22-2015 BID SET

Date:
16 JUNE, 2014
Scale:
Sections & Details

S4.02