

Prepared For:
BATEMAN PARTNERS, LLC.
 470 FORE STREET
 PORTLAND, ME 04101

Consultant:
VEITAS VEITAS architects
 48 Union Wharf Portland, Maine 04101
 (207) 772-6022 Fax (207) 772-4056

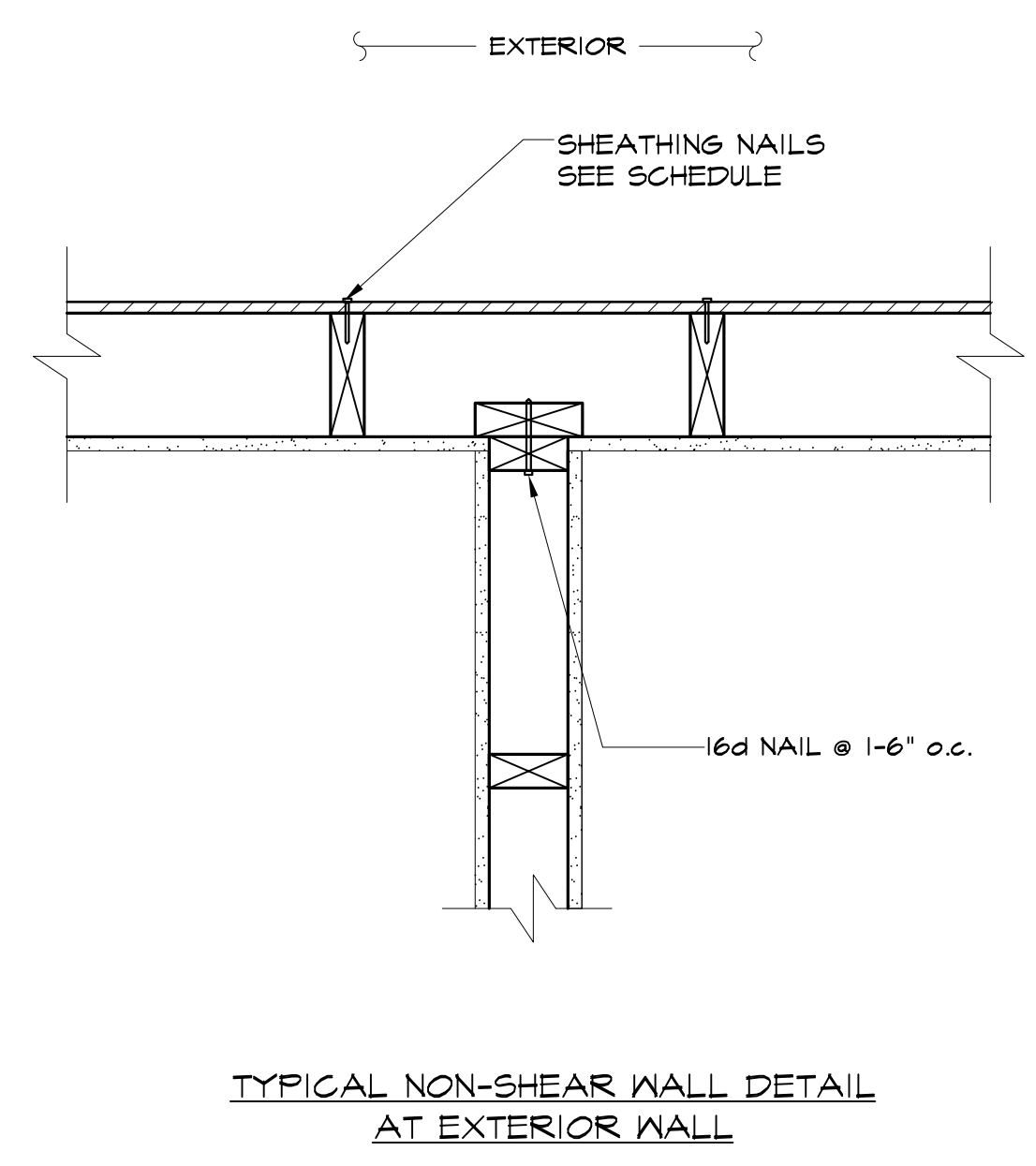
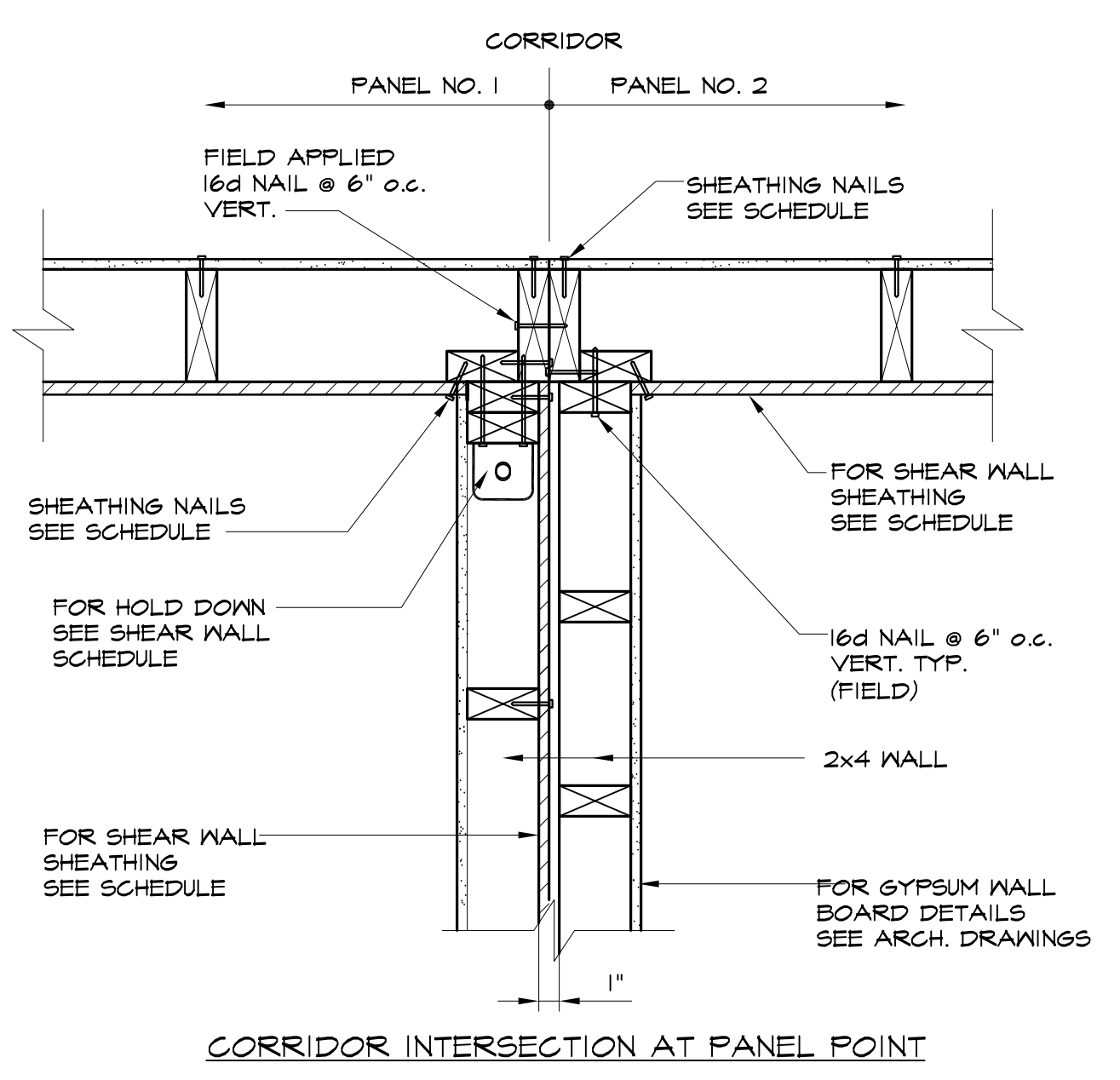
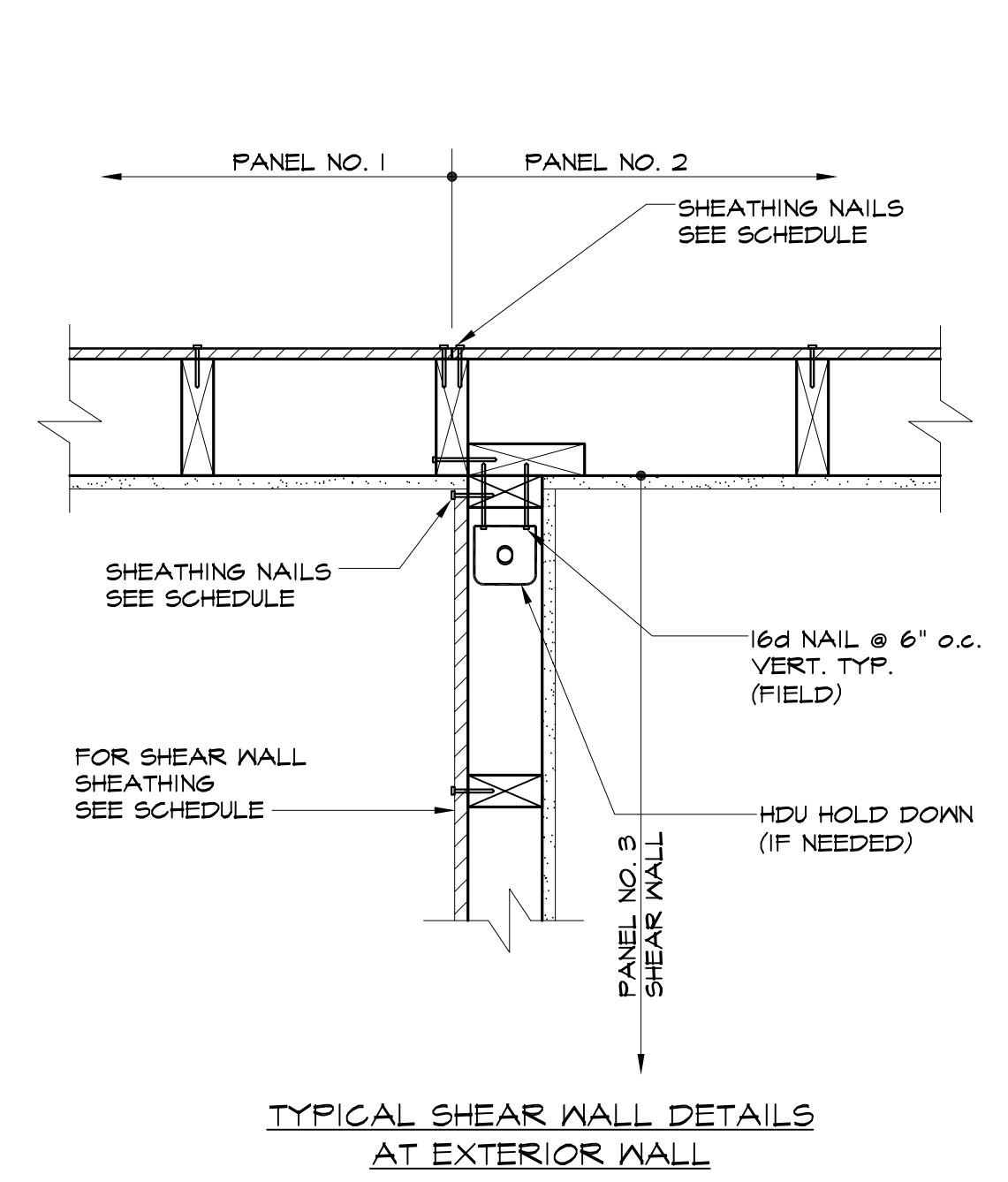
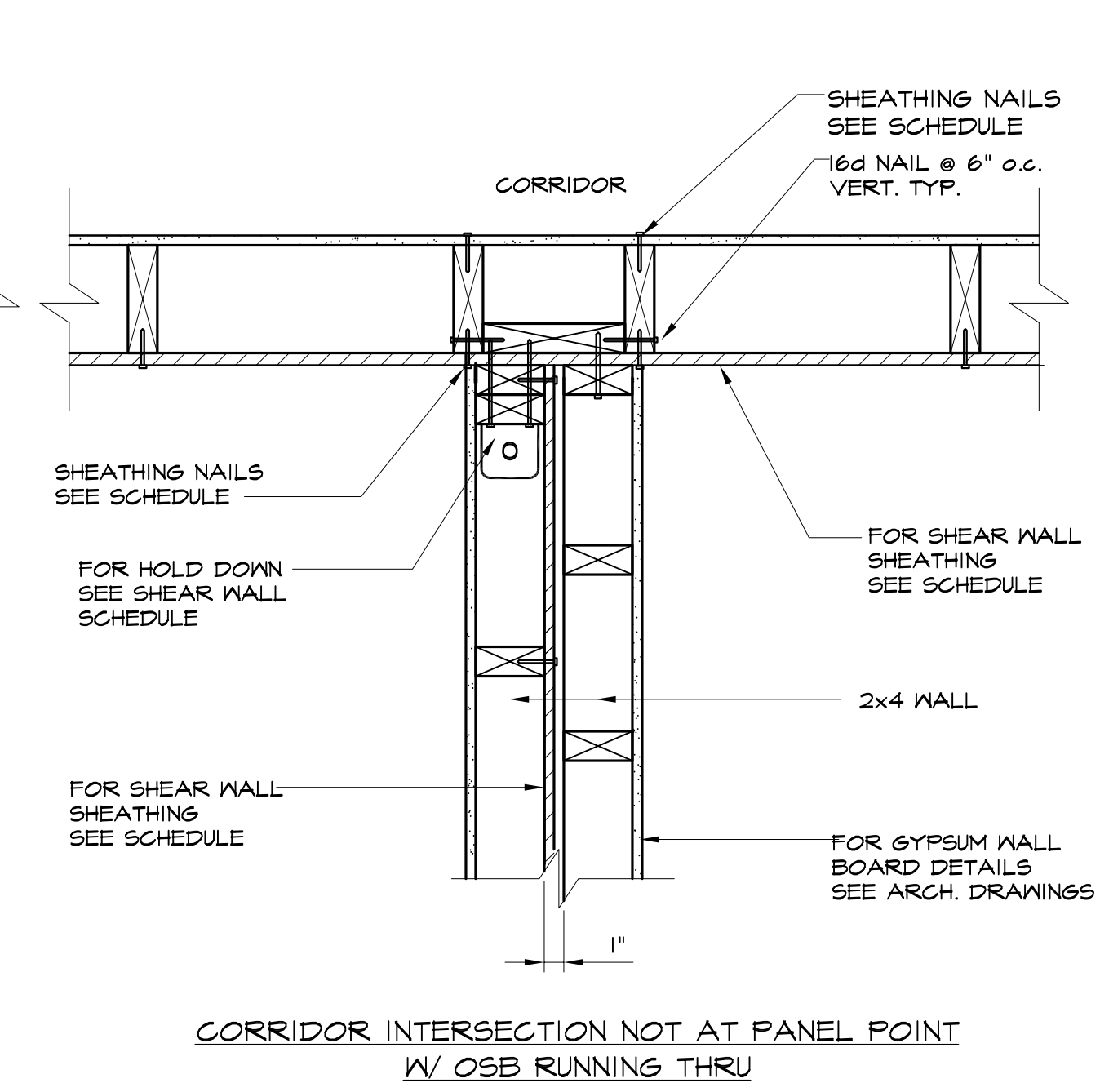
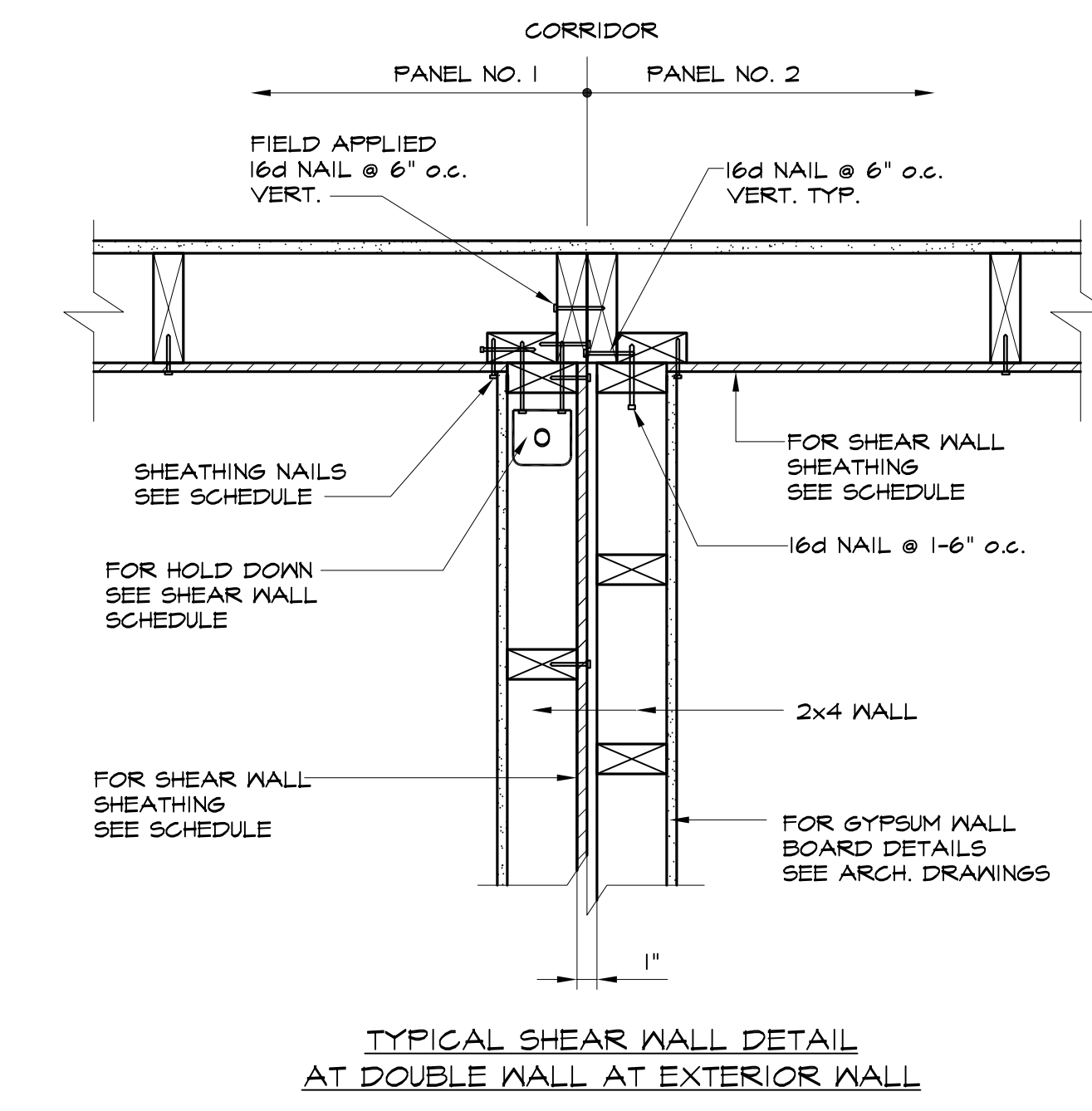
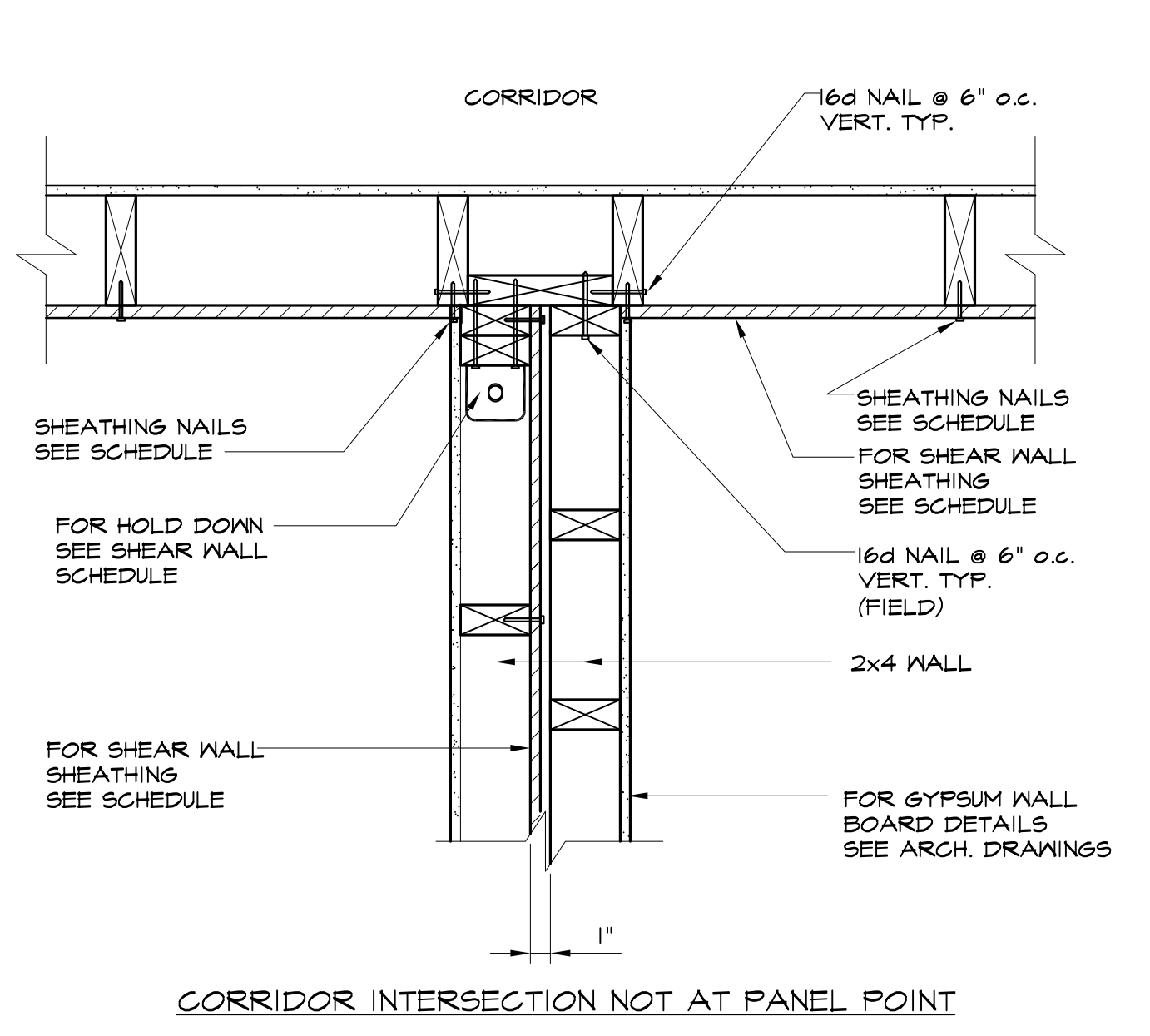
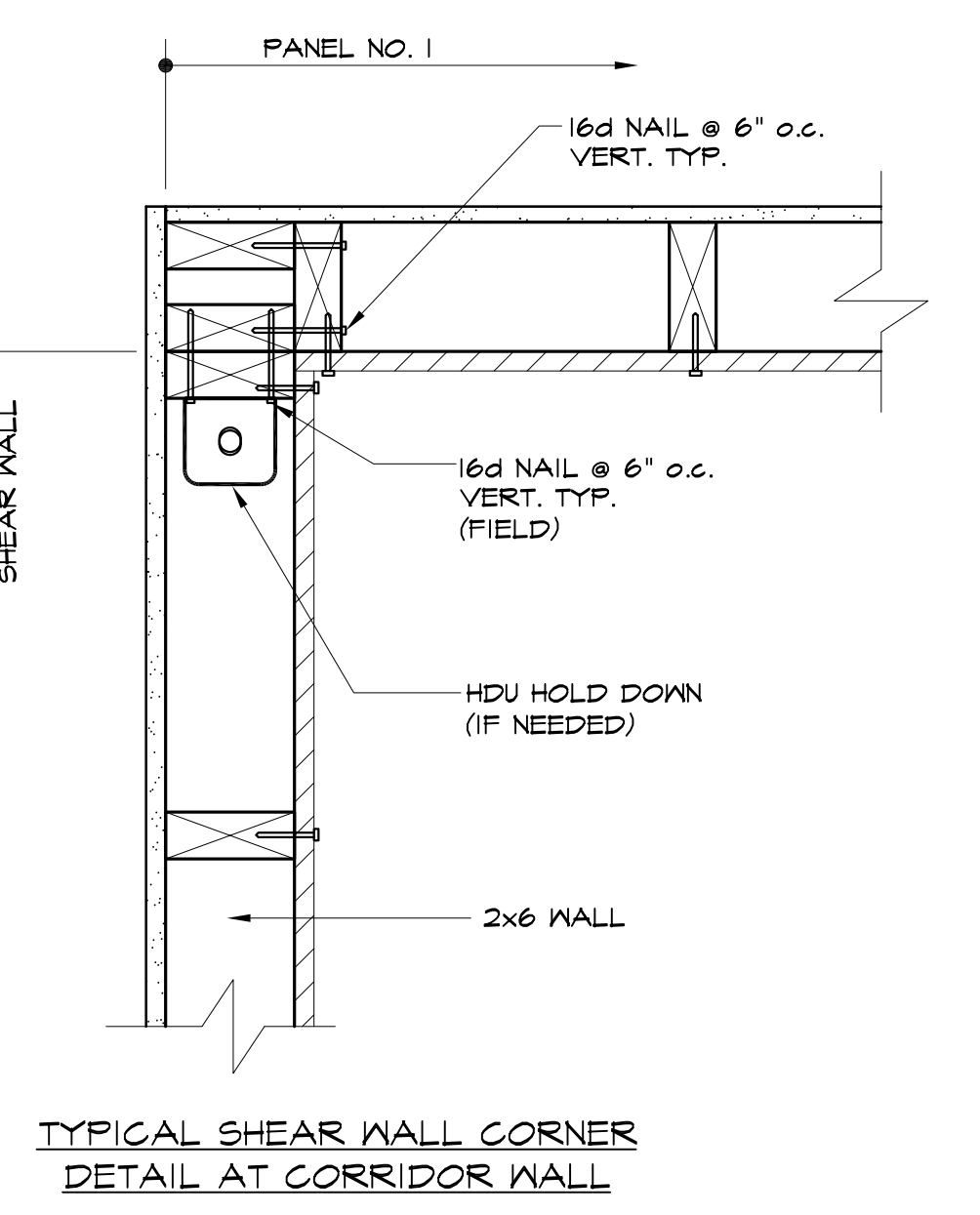
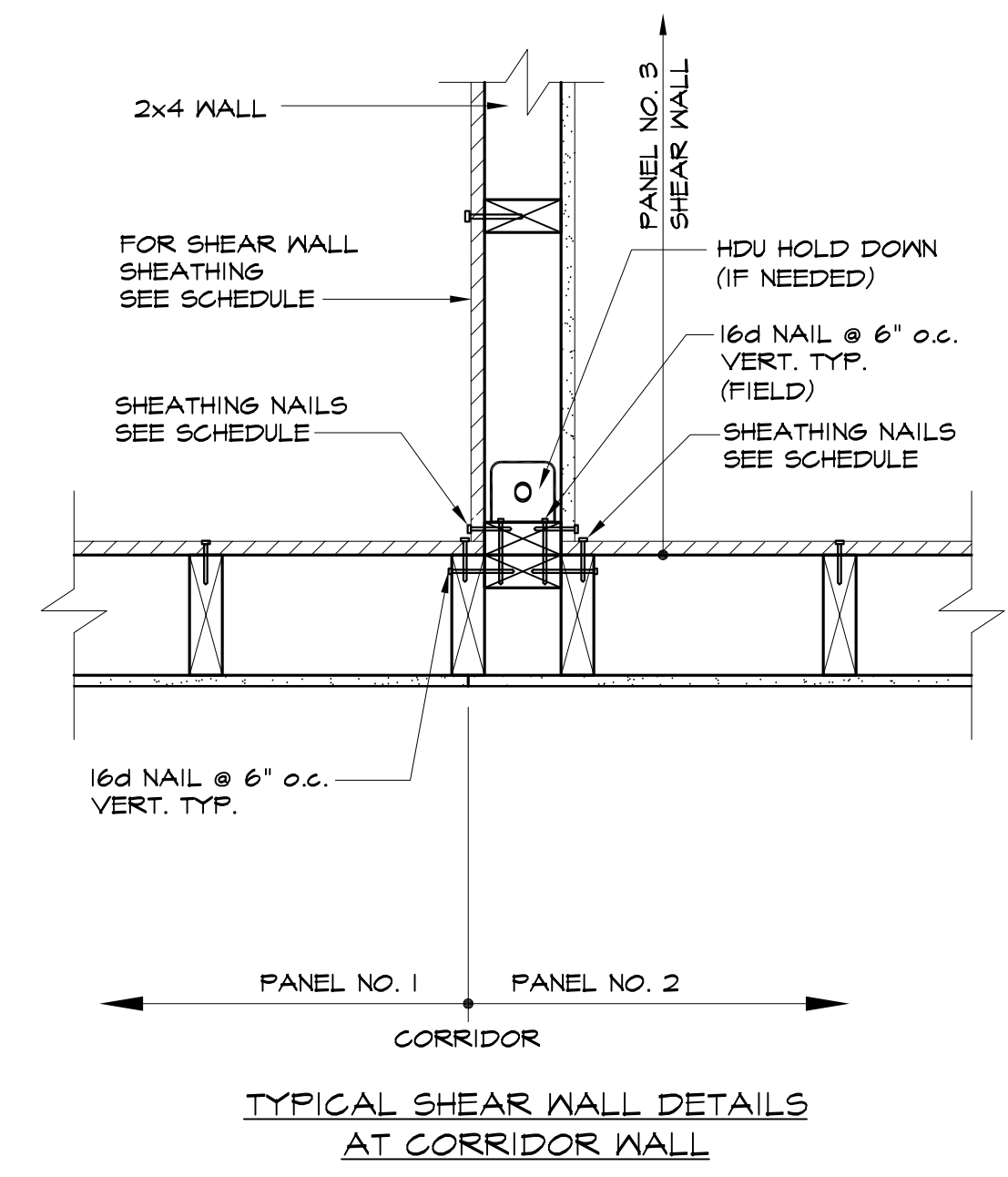
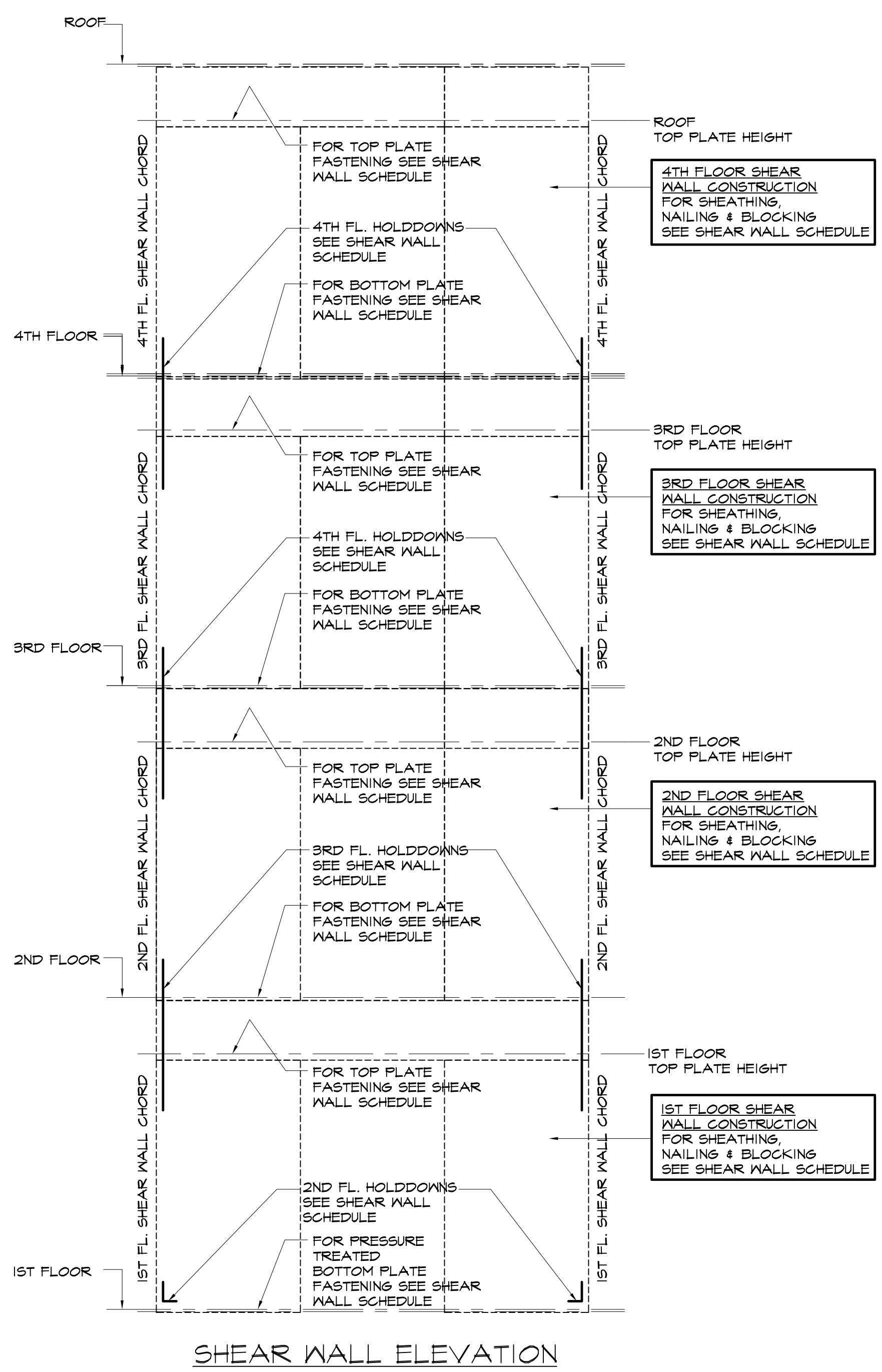
Architect:
ARCHITYPE architects
 48 Union Wharf Portland, Maine 04101
 (207) 772-6022 Fax (207) 772-4056

Project:
185 FORE STREET
 185 Fore Street, Portland Maine

Revisions:
 1 05-22-2015 BID SET

Date:
 16 JUNE, 2014
 Scale:
 Shear Wall Elevation & Shear Wall Details

S3.03



NOTE:
 SHOP NAILS NOT SHOWN FOR CLARITY
 → INDICATES FIELD APPLIED 16d NAIL @ 6" o.c. VERT.
 ← INDICATES FIELD APPLIED SHEATHING NAIL SEE SCHEDULE FOR