

5 ROOF AND MEZZANINE - LIFE SAFETY

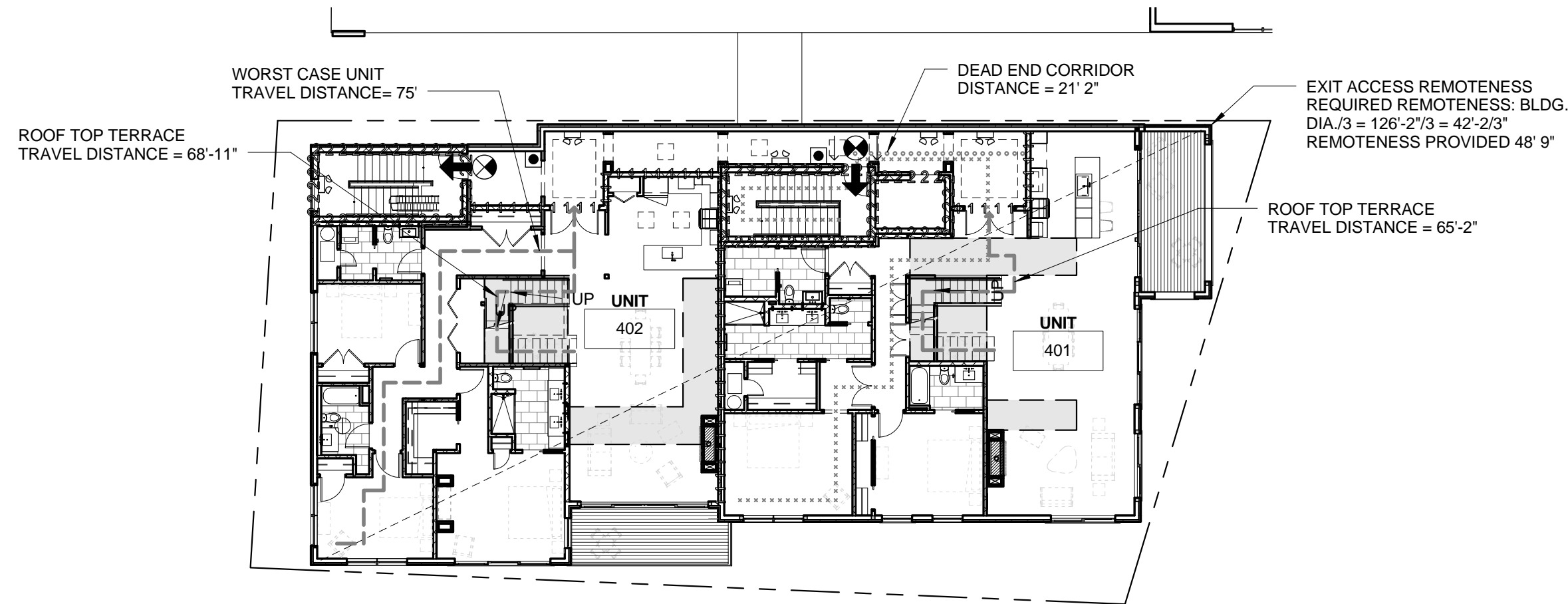
1/16" = 1'-0"
0 2'-0" 4'-0" 8'-0" 16'-0"

LIFE SAFETY LEGEND

- EXIT ACCESS REMOTENESS
 - ||||| 1 HR PARTITION
 - ||||| 2 HR PARTITION
 - ➔ EXIT ENTRANCE OR DISCHARGE
 - DISTANCE TO COMMON PATH OF TRAVEL
 - - - - - UNIT TRAVEL DISTANCE
 - ○ ○ ○ ○ DEAD END CORRIDOR DISTANCE
 - × × × × × TRAVEL DISTANCE FROM MOST REMOTE POINT TO EXIT DISCHARGE 272'
 - ⊗ EXIT LIGHT, SEE ELEC
 - ⊗ EXIT LIGHT DISPLAY SURFACE
 - ⊗ EXIT LIGHT INDICATOR DIRECTION
 - ⊗ EMERGENCY LIGHTING, SEE ELEC
 - ⊗ FIRE EXTINGUISHER CABINET
- SEE ELECTRICAL DRAWINGS FOR FIRE ALARM & SMOKE DETECTOR LOCATIONS

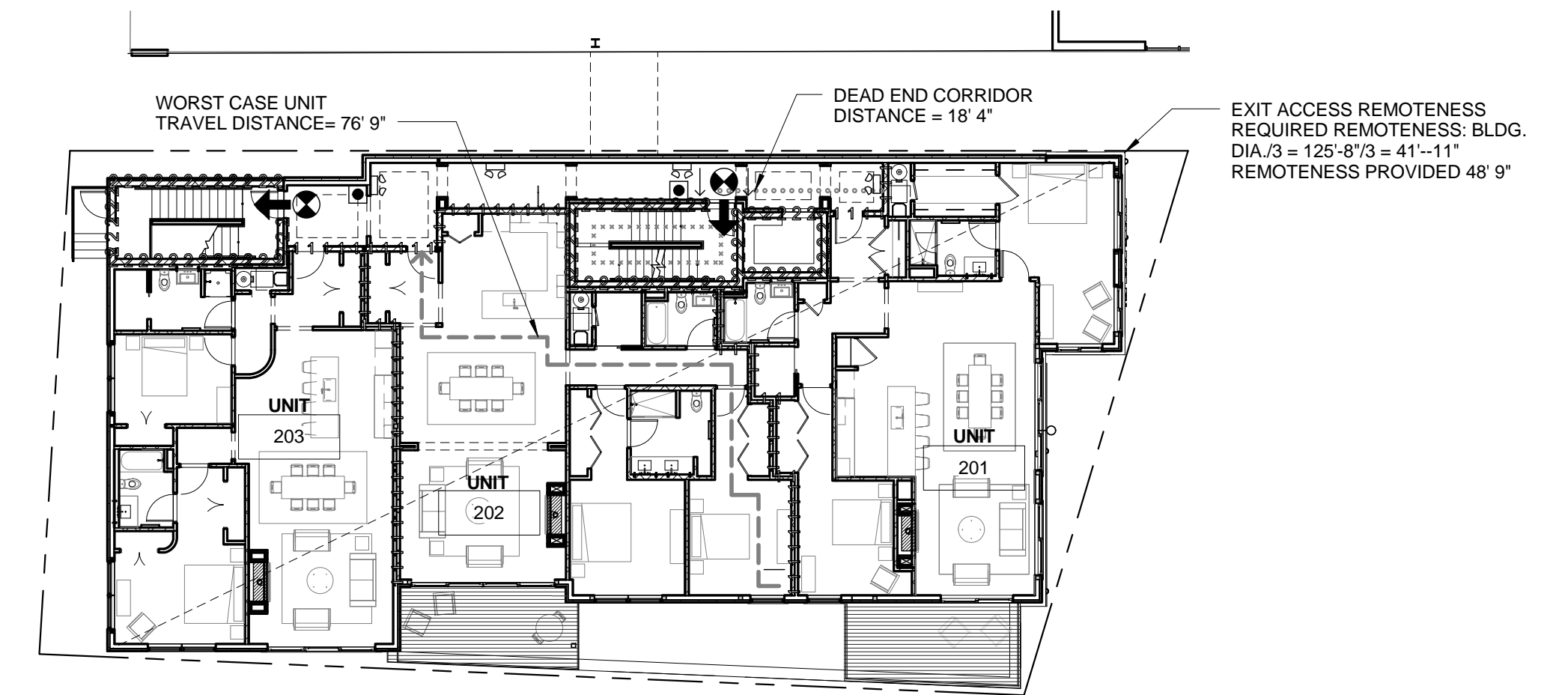
6 LIFE SAFETY LEGEND

1/8" = 1'-0"
0 2'-0" 4'-0" 8'-0" 16'-0"



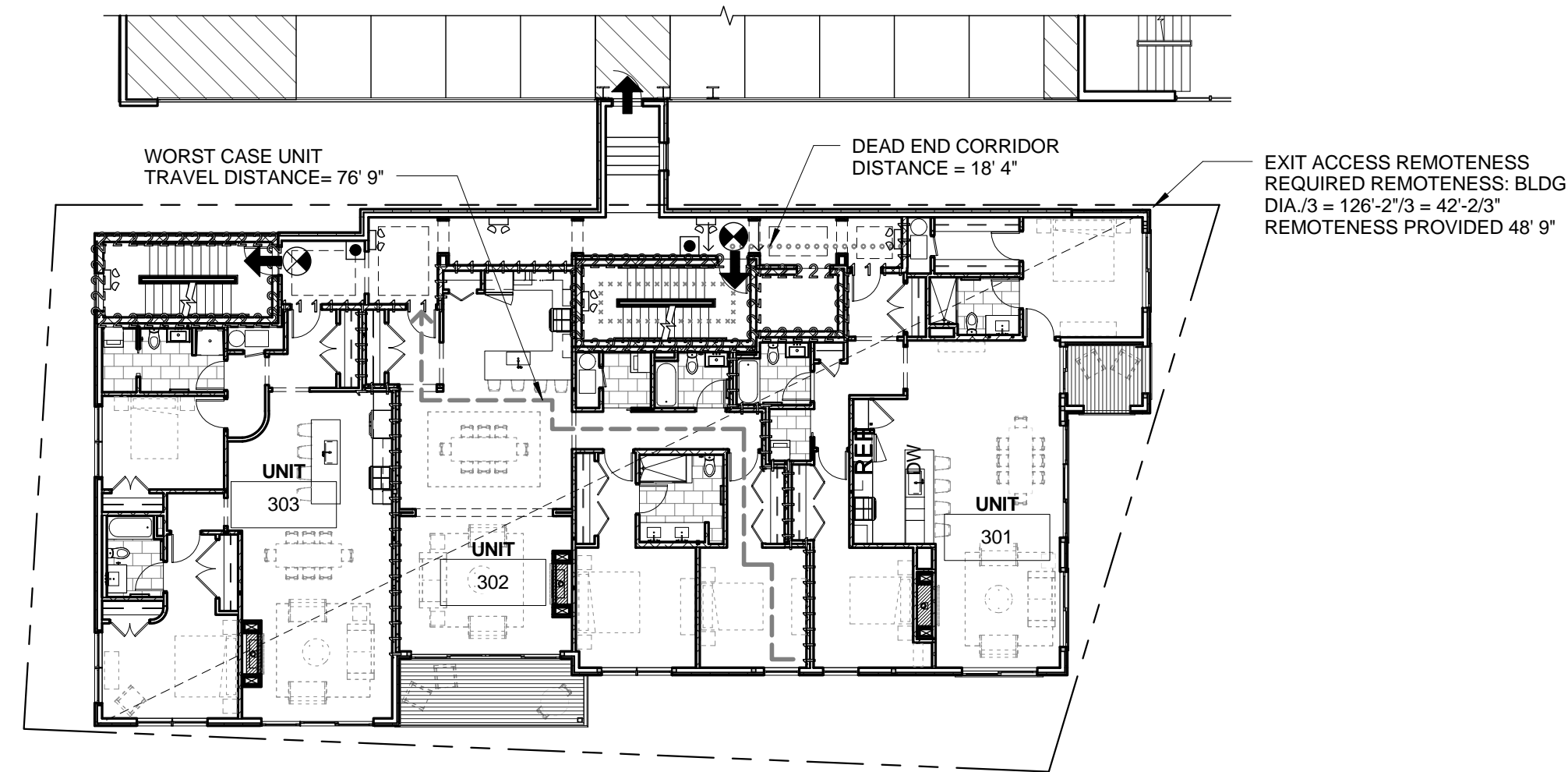
4 4TH FLOOR - LIFE SAFETY

1/16" = 1'-0"
0 2'-0" 4'-0" 8'-0" 16'-0"



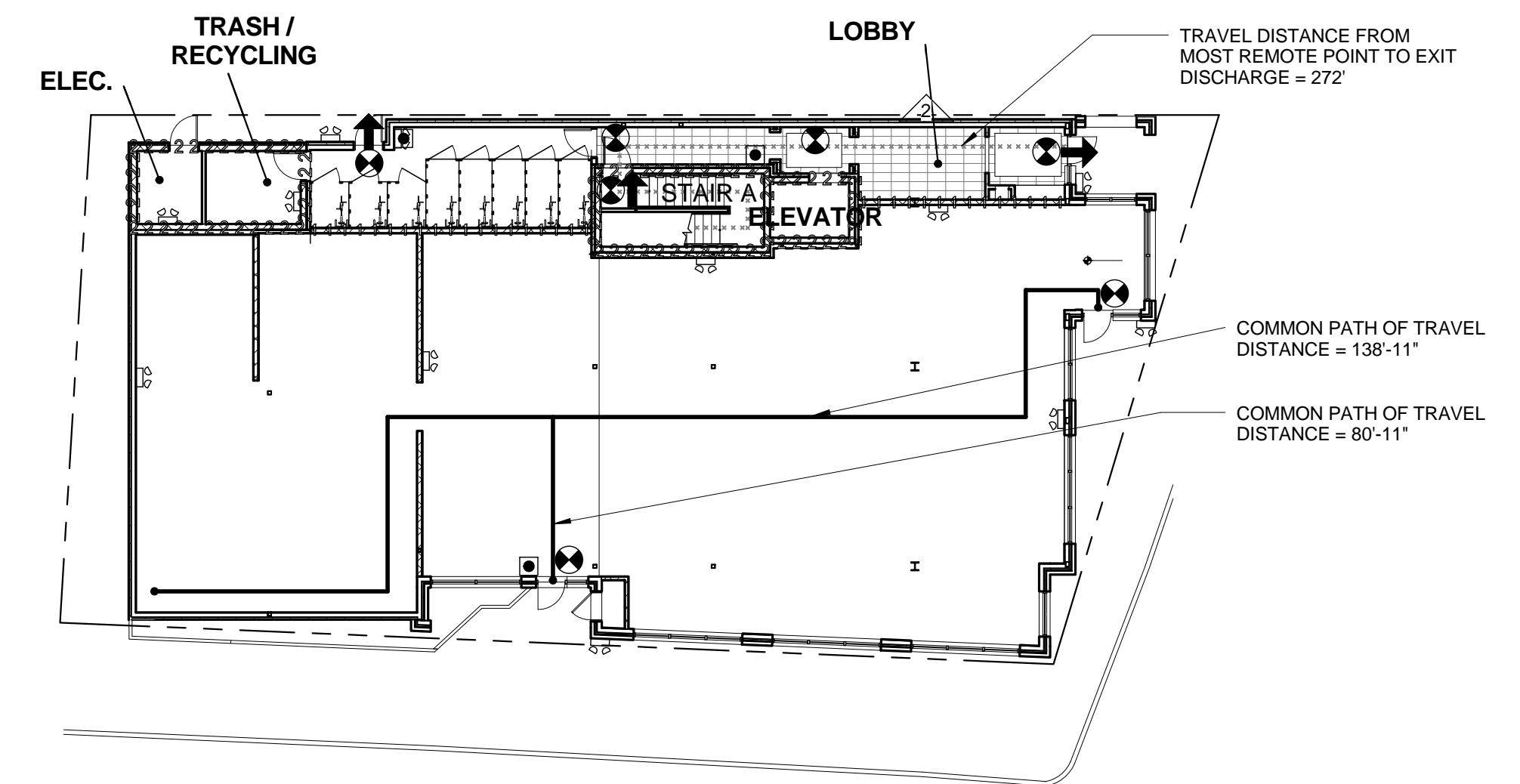
2 2ND FLOOR PLAN - LIFE SAFETY

1/16" = 1'-0"
0 2'-0" 4'-0" 8'-0" 16'-0"



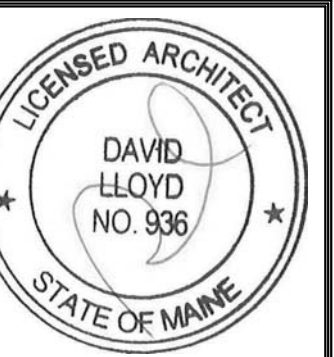
3 3RD FLOOR - LIFE SAFETY

1/16" = 1'-0"
0 2'-0" 4'-0" 8'-0" 16'-0"



1 1ST FLOOR - LIFE SAFETY

1/16" = 1'-0"
0 2'-0" 4'-0" 8'-0" 16'-0"



Prepared For:
BATEMAN PARTNERS, LLC.

Consultant:
ARCHETYPE architects
48 Union Wharf Portland, Maine 04101
(207) 772-6022 Fax (207) 772-4056

Project:
185 Fore Street
185 Fore Street, Portland Maine

Revisions:
2 06-12-2015 ADDENDUM 1

Scale:
As indicated

Date:
12 JUNE, 2015

LIFE SAFETY

LS1.1