

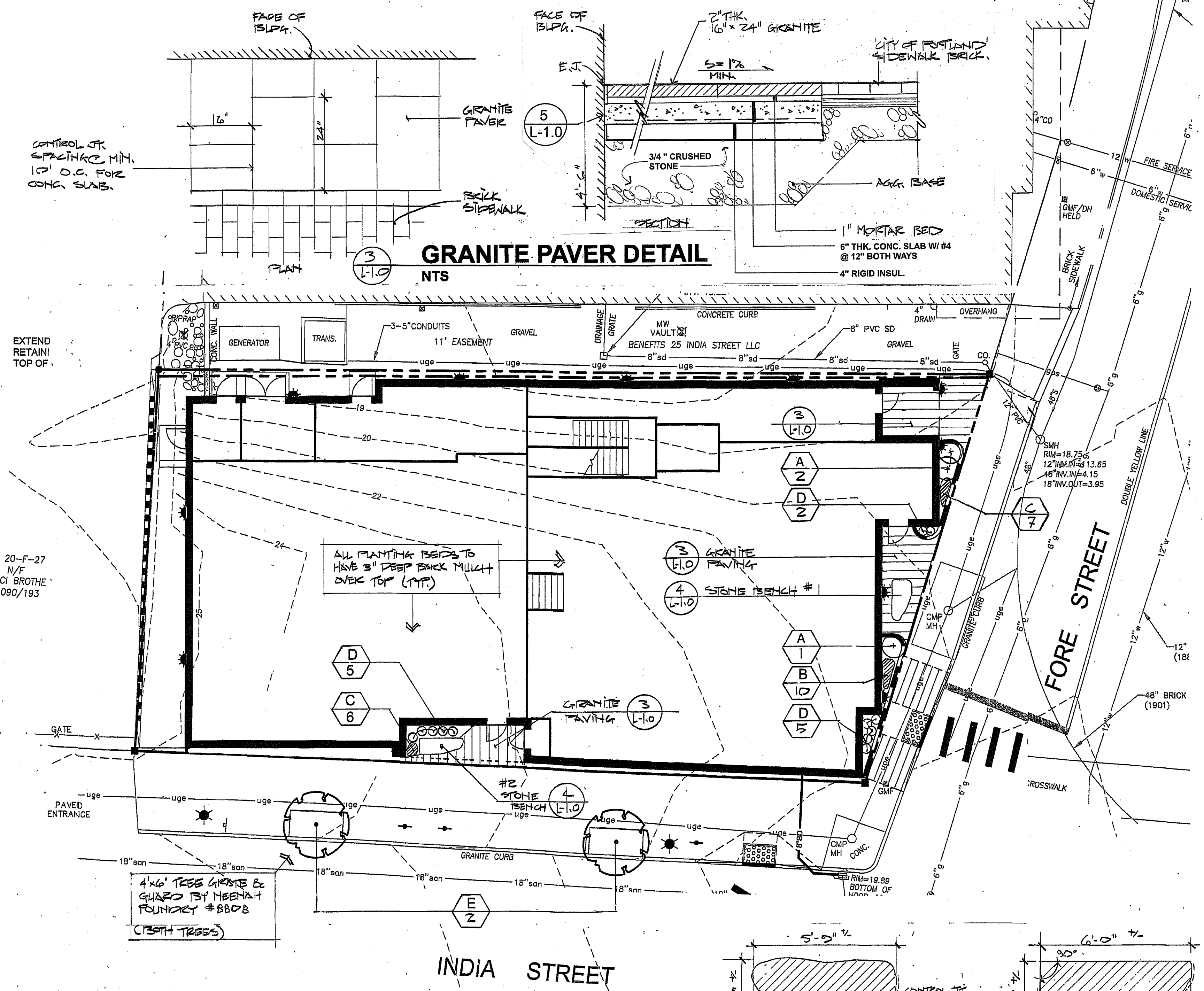
**TREE GRATE DETAIL**  
NEENAH FOUNDRY CO. # NF-8808 103



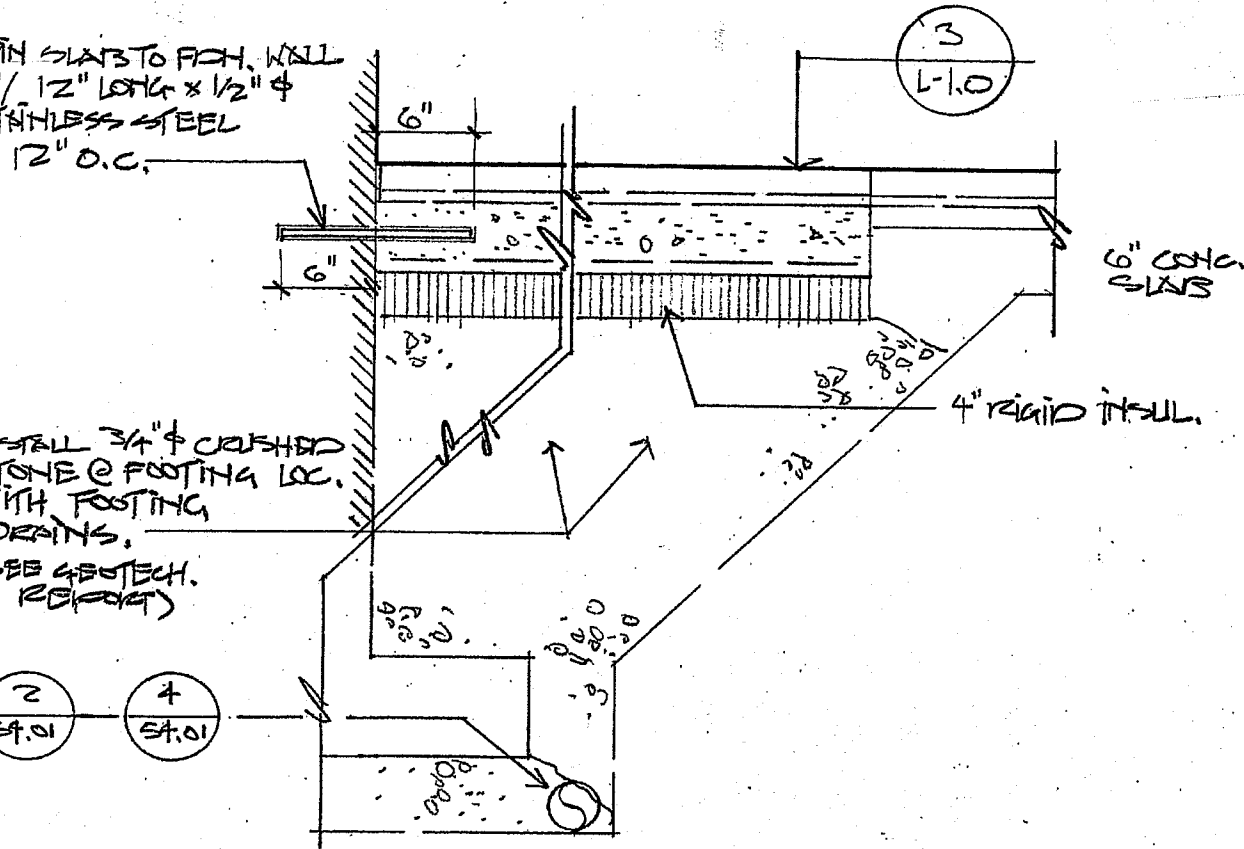
**TREE GRATE & GUARD**  
SIMILAR EXISTING ON MIDDLE STREET

**PLANT LIST**

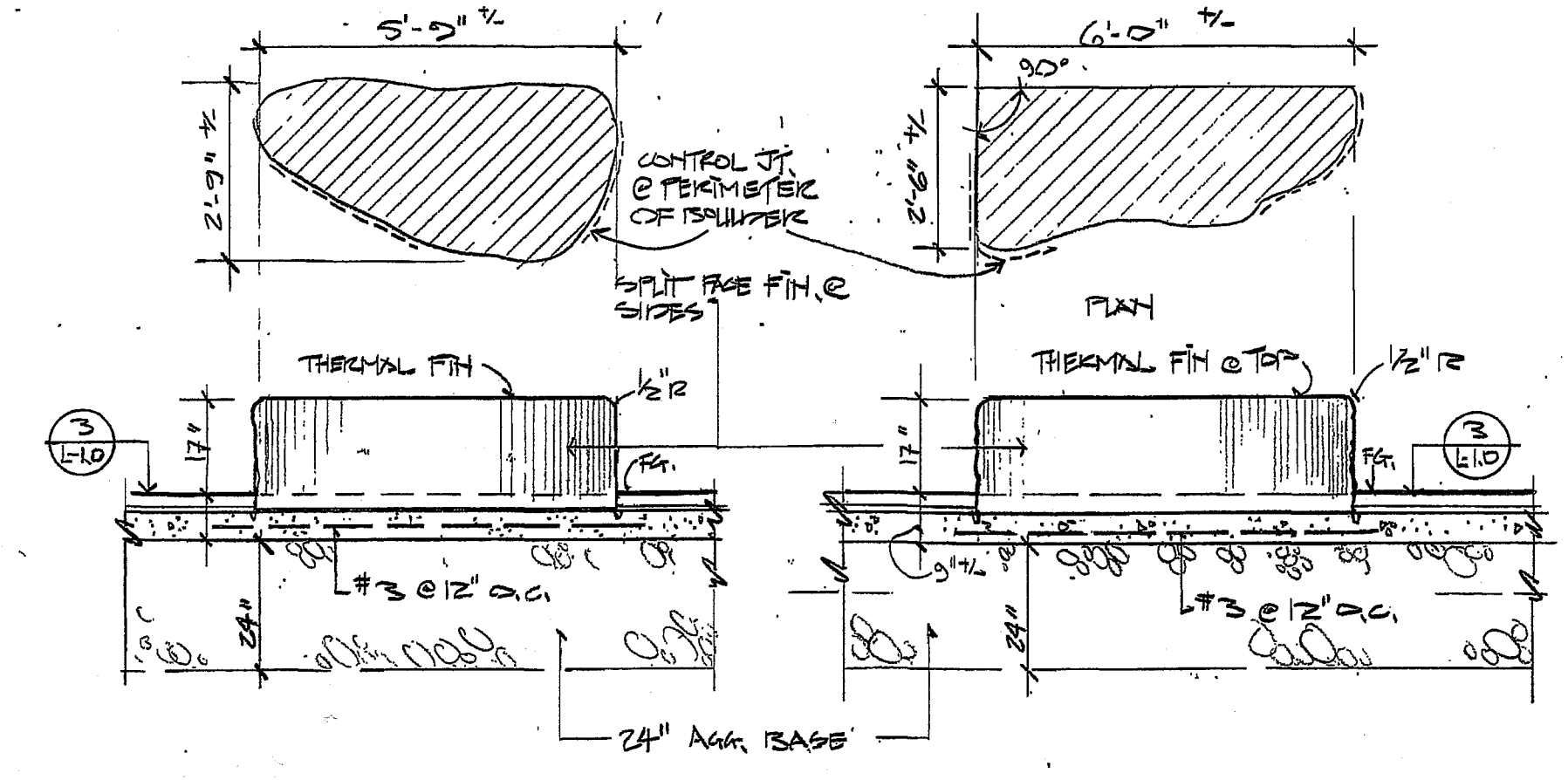
Key	Common & Botanical Name	Size	Root	Qty	Notes
A.	Northern Bayberry M. Pensylvanica	18" Ht.	Cont.	3	
B.	Daylily: 'Mystical Rainbow'		Cont.	10	
C.	Daylily Varieties Hemerocallis 'Condilla'		Cont.	13	
D.	Switch Grass P. Verigatum 'Shenandoah'		#2	12	
E.	Magyar Ginkgo Ginkgo Biloba 'Magyar'	2 1/2" Cal.	B&B	2	
PB.	Planting Beds for Assorted Perennials @ 15" deep - prepared planting soil				



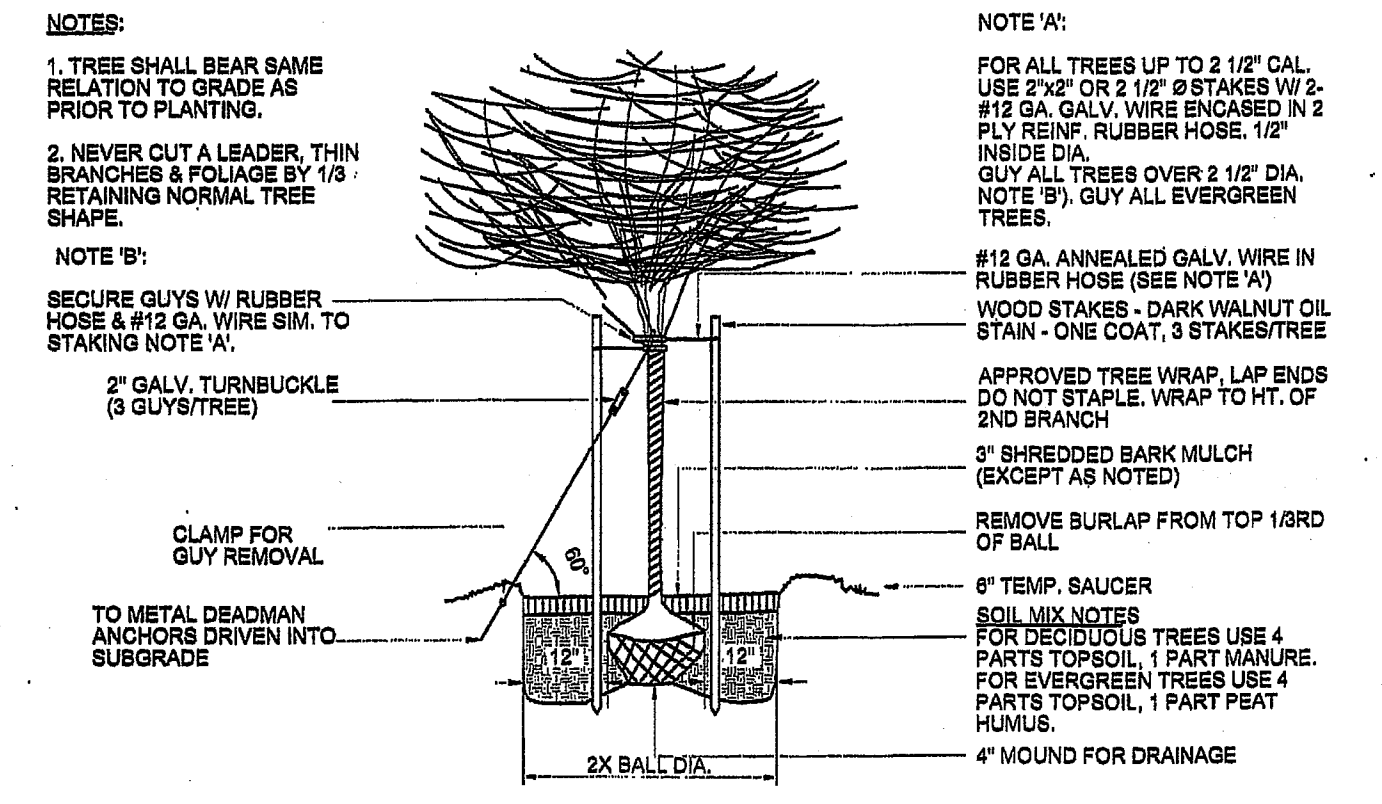
TM 20-F-27  
N/F  
MICUCCI BROTHE  
11090/193



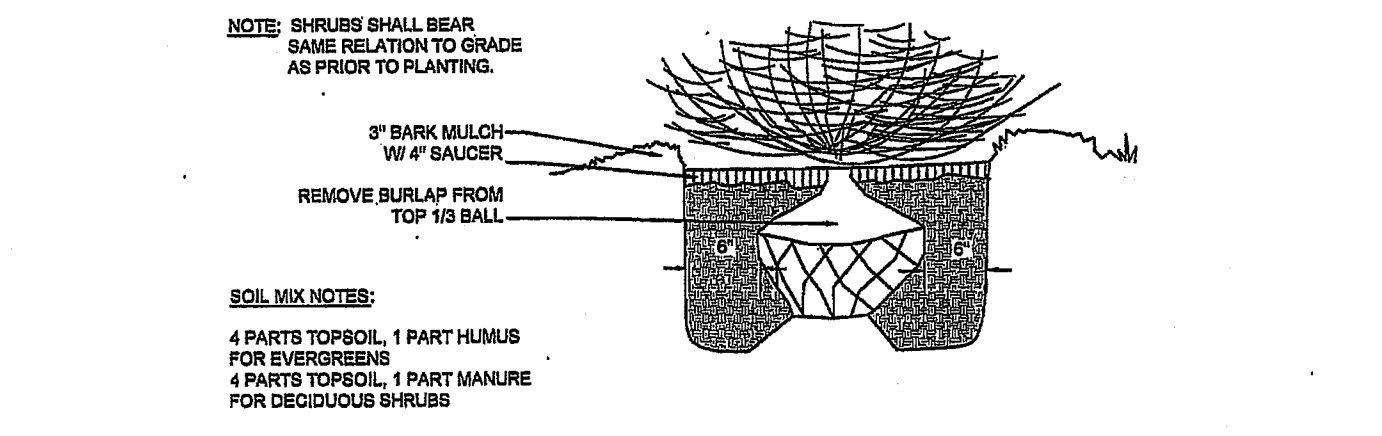
**FROST PROTECTION AT ENTRY SLABS**  
NTS



**STONE BENCH DETAILS**  
NTS



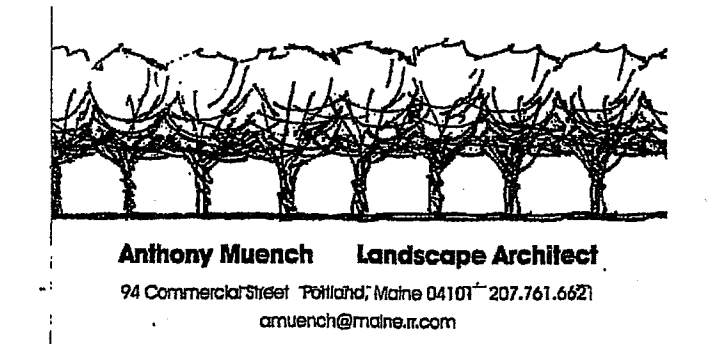
**PLANTING DETAIL - TREE**  
N.T.S.



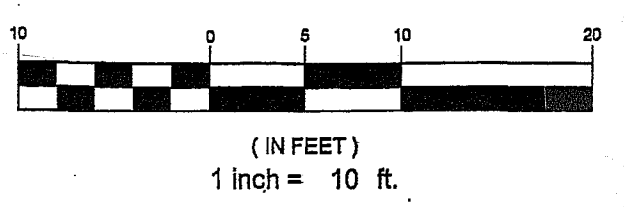
**PLANTING DETAIL - SHRUB**  
N.T.S.

**PLANTING NOTES**

- The contractor shall supply all plants in quantities sufficient to complete the work shown on plan. Any discrepancies between quantities shown on plant list and those required by this drawing shall not entitle contractor to additional remuneration.
- Any plant substitutions must be approved by the owner and the City of Portland.
- Any tree or shrub which comes over or under any utility shall be relocated on the site by the landscape architect.
- All lawn areas to have 6" of topsoil unless noted otherwise.
- All trees and shrubs shall be placed in the designated areas as shown on the plan and before planting shall be approved by the landscape architect.
- The contractor shall relocate any tree or shrub as directed by the landscape architect.
- All plant material installed shall meet the specifications of the American Standard for Nursery Stock (latest edition) as set forth by the American Association of Nurserymen.
- The landscape contractor shall replace or repair to original condition any and all utilities, paving, curbing, etc., damaged as a result of their operations at no additional cost to the owner.



PRELIMINARY - NOT FOR CONSTRUCTION



REV	DATE	DESCRIPTION	REVISIONS
6.1.15		FROST PROTECTION @ ENTRY DETAIL	
4.14.15		REMOVED PLANT BEDS ON INDIA STREET	
7.22.14		REV. BENCH, BENCH PLANTING & BENCHES	
6.17.14		LANDSCAPE PLAN	

PROJECT  
185 FORE STREET  
PORTLAND, MAINE

SHEET TITLE  
**LANDSCAPE PLAN**

CLIENT  
BATEMAN PARTNERS LLC

**FST** FAY, SPOFFORD & THORNDIKE  
ENGINEERS • PLANNERS • SCIENTISTS  
778 MAIN ST, SUITE 6, SOUTH PORTLAND, ME 04106

SHEET **L-1.0**

R:\SP-M150 India & Middle St\Cadd\Permit Set\log\SP-M150-GRADING & DRAINAGE.dwg vlnlr\_c 6/12/2014 10:23 AM