

Prepared For:  
**BATEMAN PARTNERS, L.L.C.**  
 470 FORE STREET  
 PORTLAND, ME 04101

Consultant:  
**ARCHETYPE architects**  
 48 Union Wharf Portland, Maine 04101  
 (207) 772-6022 Fax (207) 772-4056

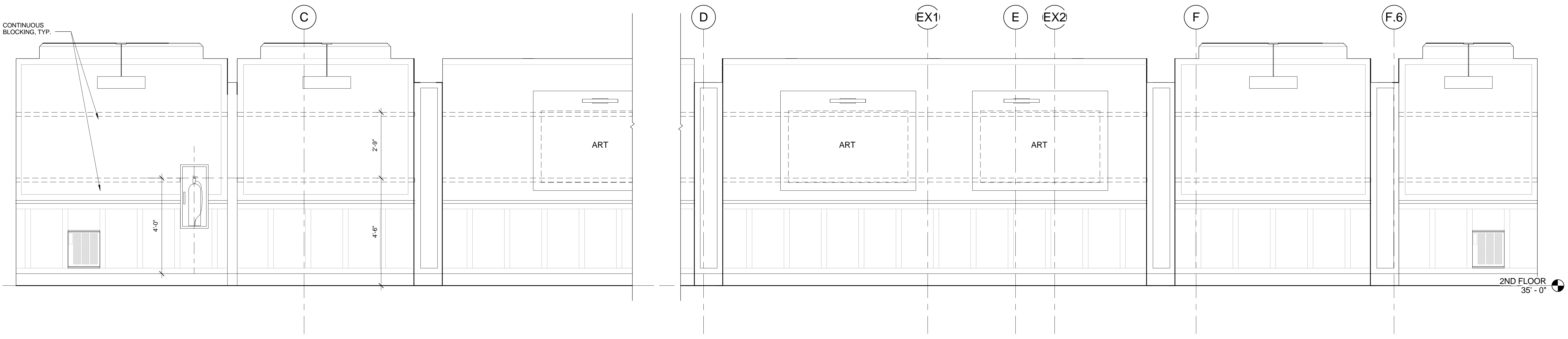
Architect:  
**ARCHETYPE architects**  
 48 Union Wharf Portland, Maine 04101  
 (207) 772-6022 Fax (207) 772-4056

Project:  
 185 Fore Street  
 185 Fore Street, Portland, Maine

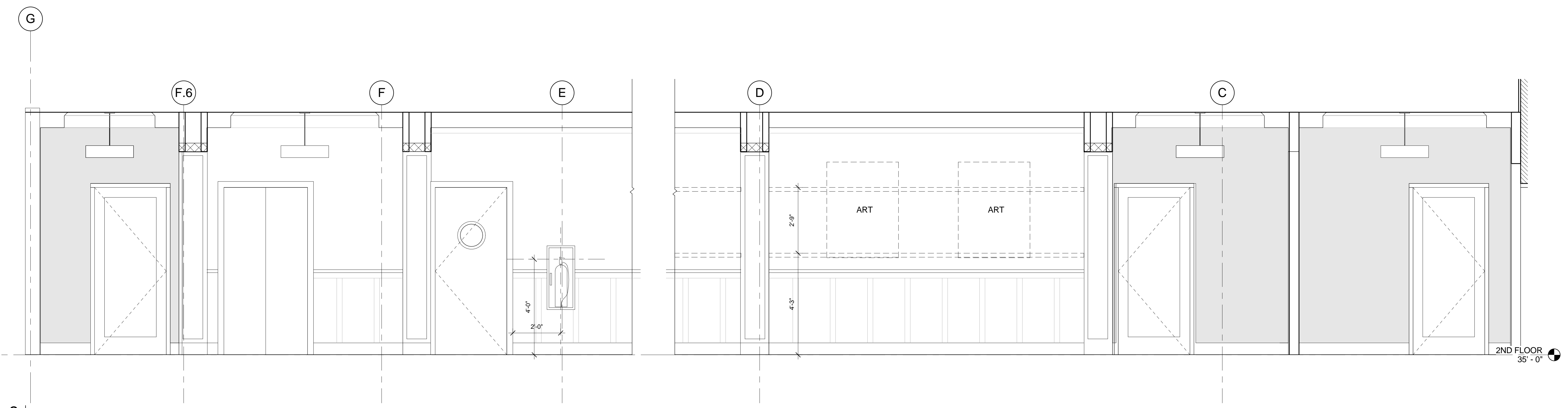
Revisions:  
 2 | 06-12-2015 | ADDENDUM 1

Date: 12 JUNE, 2015  
 Scale: 1/2" = 1'-0"  
**INTERIOR ELEVATIONS - UPPER LEVELS**

**A7.12**



1 | UNIT CORRIDOR ELEV. A  
 1/2" = 1'-0"  
 0 2'-0" 4'-0" 8'-0" 16'-0"



2 | UNIT CORRIDOR ELEV. C  
 1/2" = 1'-0"  
 0 2'-0" 4'-0" 8'-0" 16'-0"