

Prepared For:
BATEMAN PARTNERS, L.L.C.
 470 FORE STREET
 PORTLAND, ME 04101

Consultant:

Architect:
ARCHETYPE architects
 48 Union Wharf Portland, Maine 04101
 (207) 772-6022 Fax (207) 772-4056

Project:

185 Fore Street
 185 Fore Street, Portland, Maine

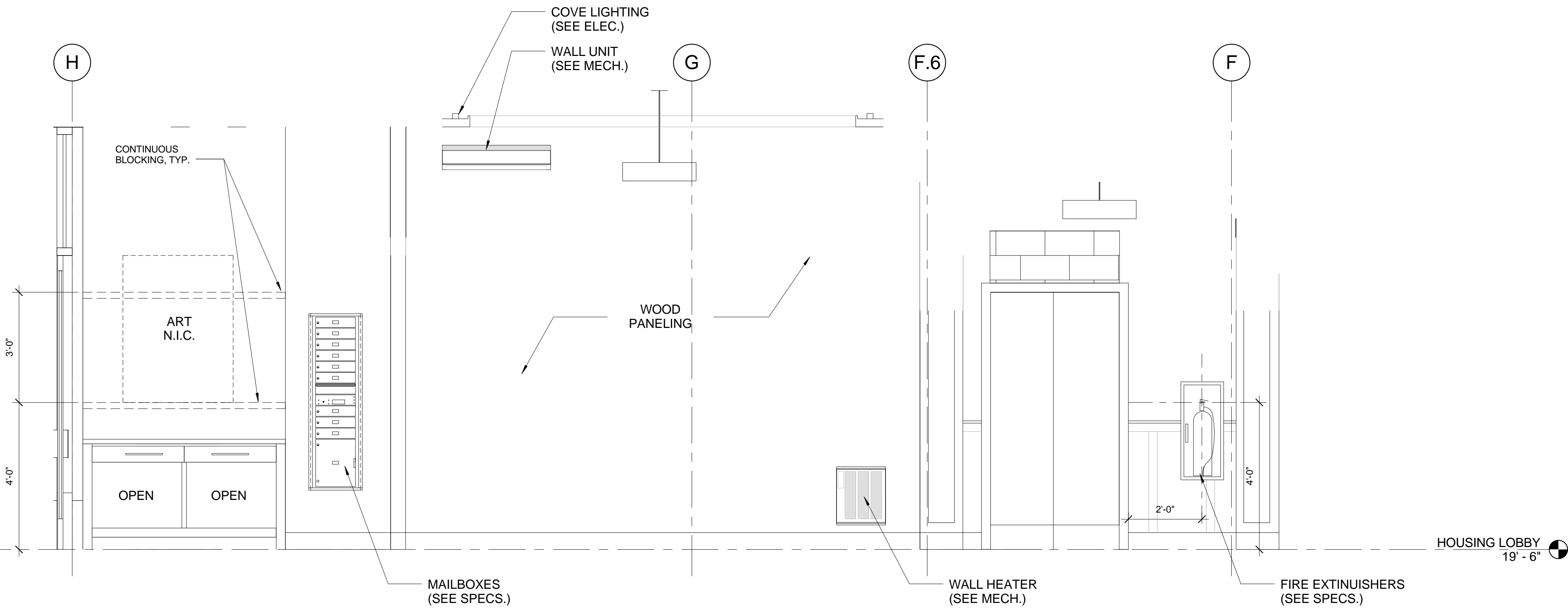
Revisions:

1	05-22-2014	BID SET
2	06-12-2015	ADDENDUM 1

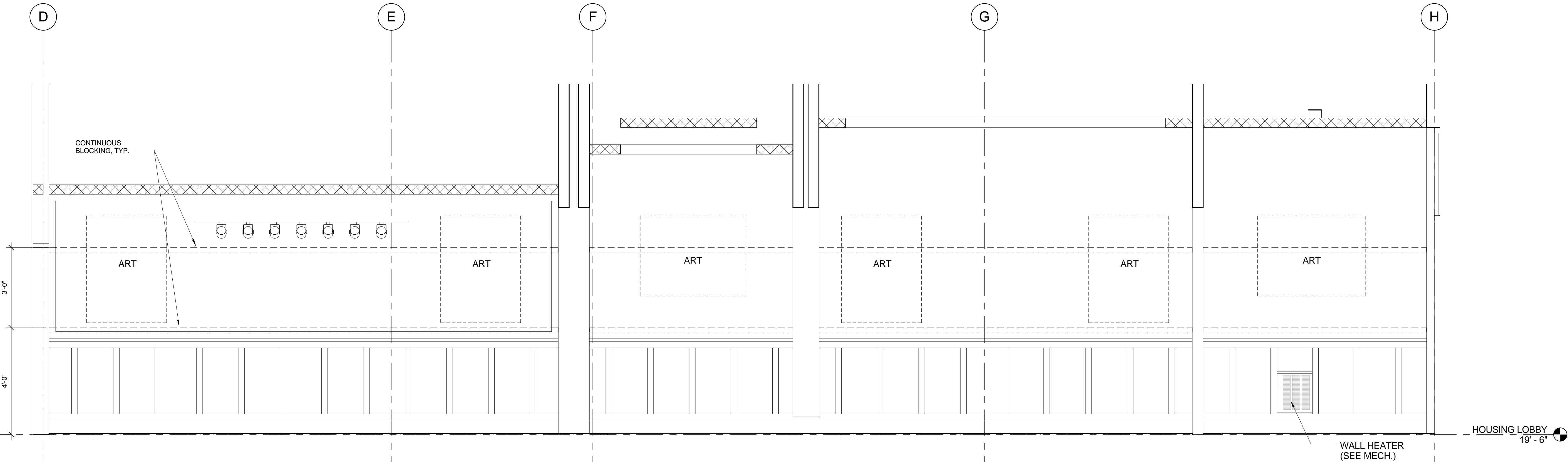
Date:
 12 JUNE, 2015

Scale:
 1/2" = 1'-0"

A7.11



1 HOUSING LOBBY - ELEV C
 1/2" = 1'-0" 0 2'-0" 4'-0" 8'-0"



2 Elevation 2 - c
 1/2" = 1'-0" 0 2'-0" 4'-0" 8'-0" 16'-0"

INTERIOR ELEVATIONS - LOBBY