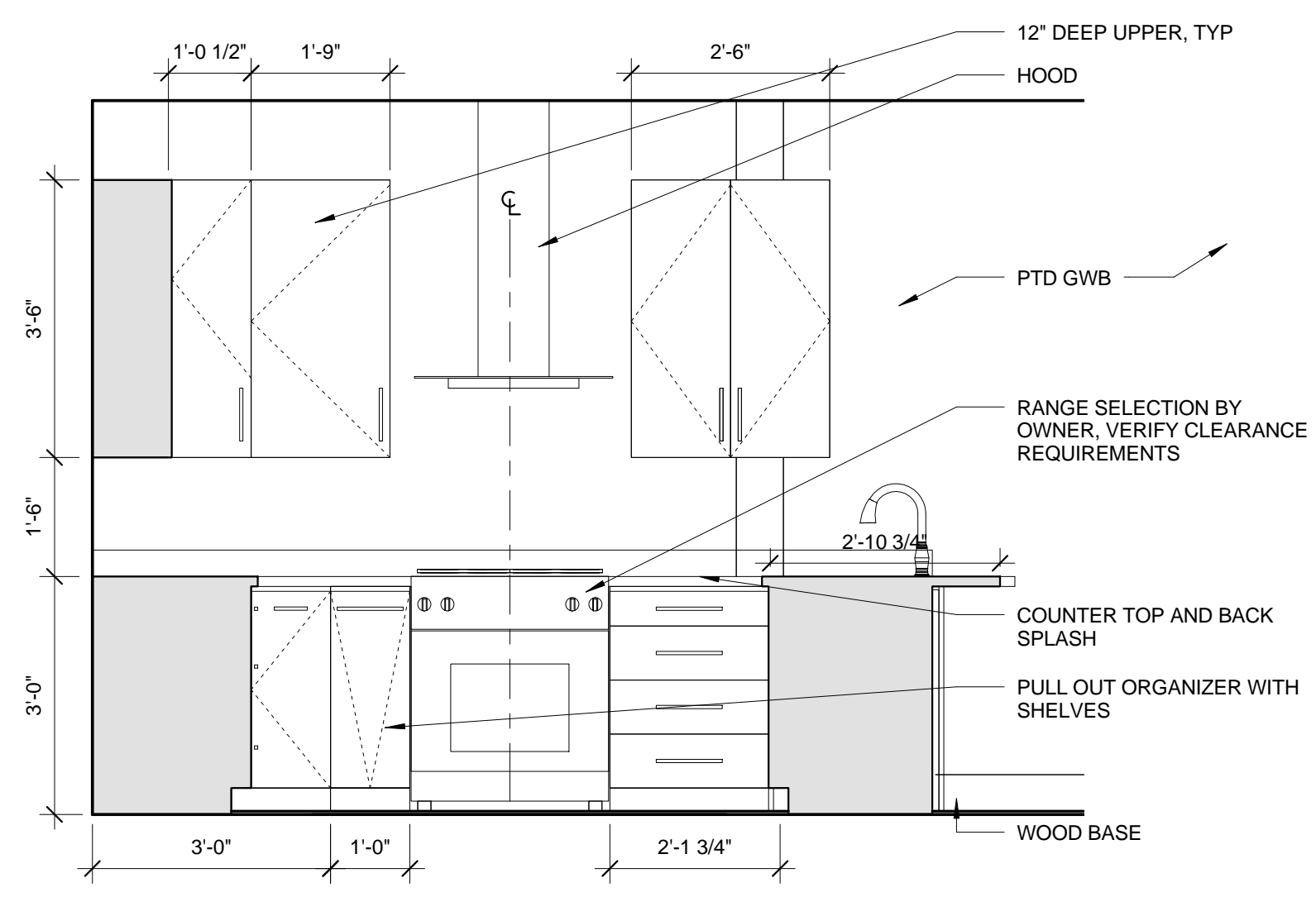
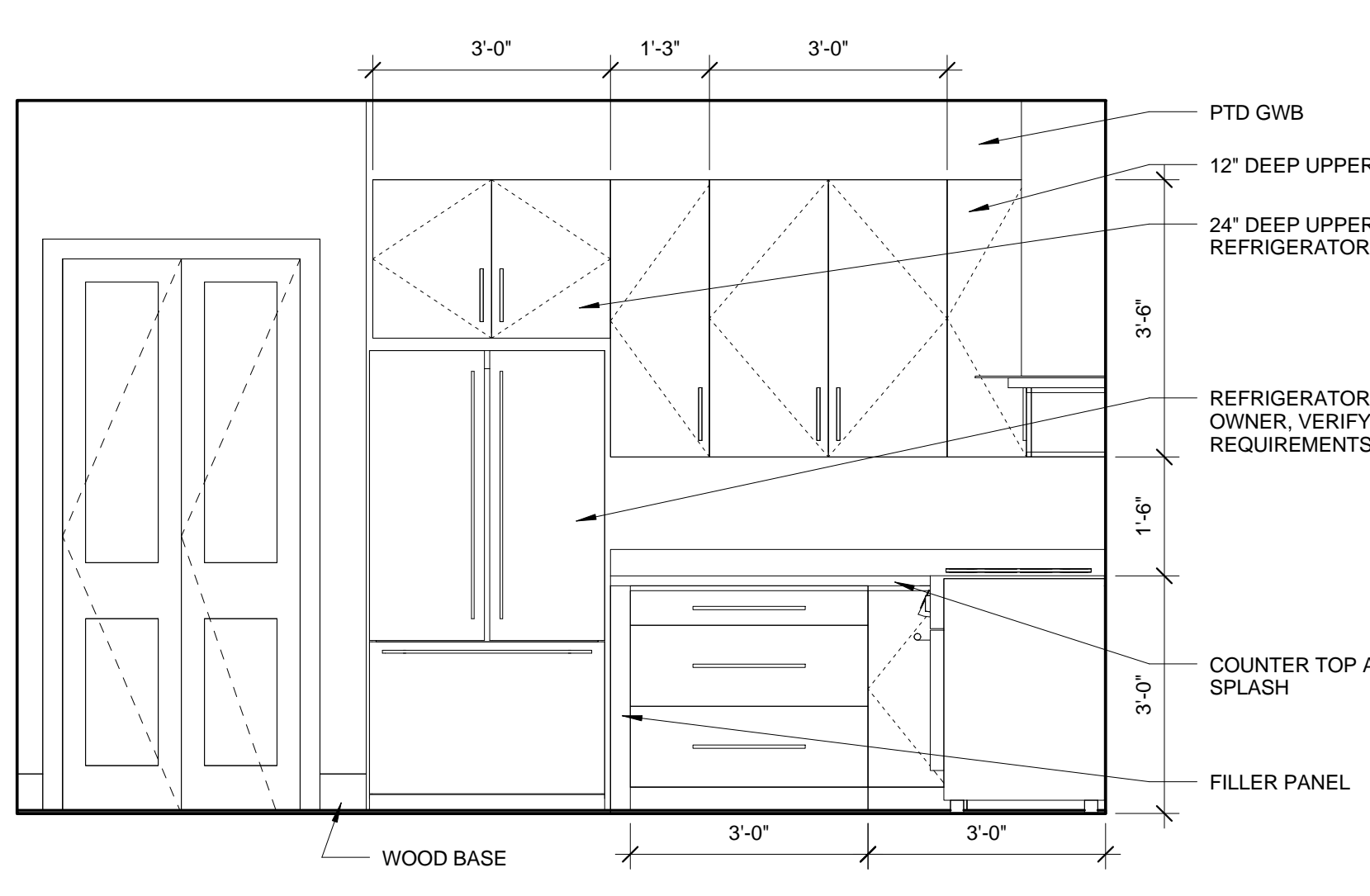


1 ENLARGED PLAN 202 302
1/4" = 1'-0"

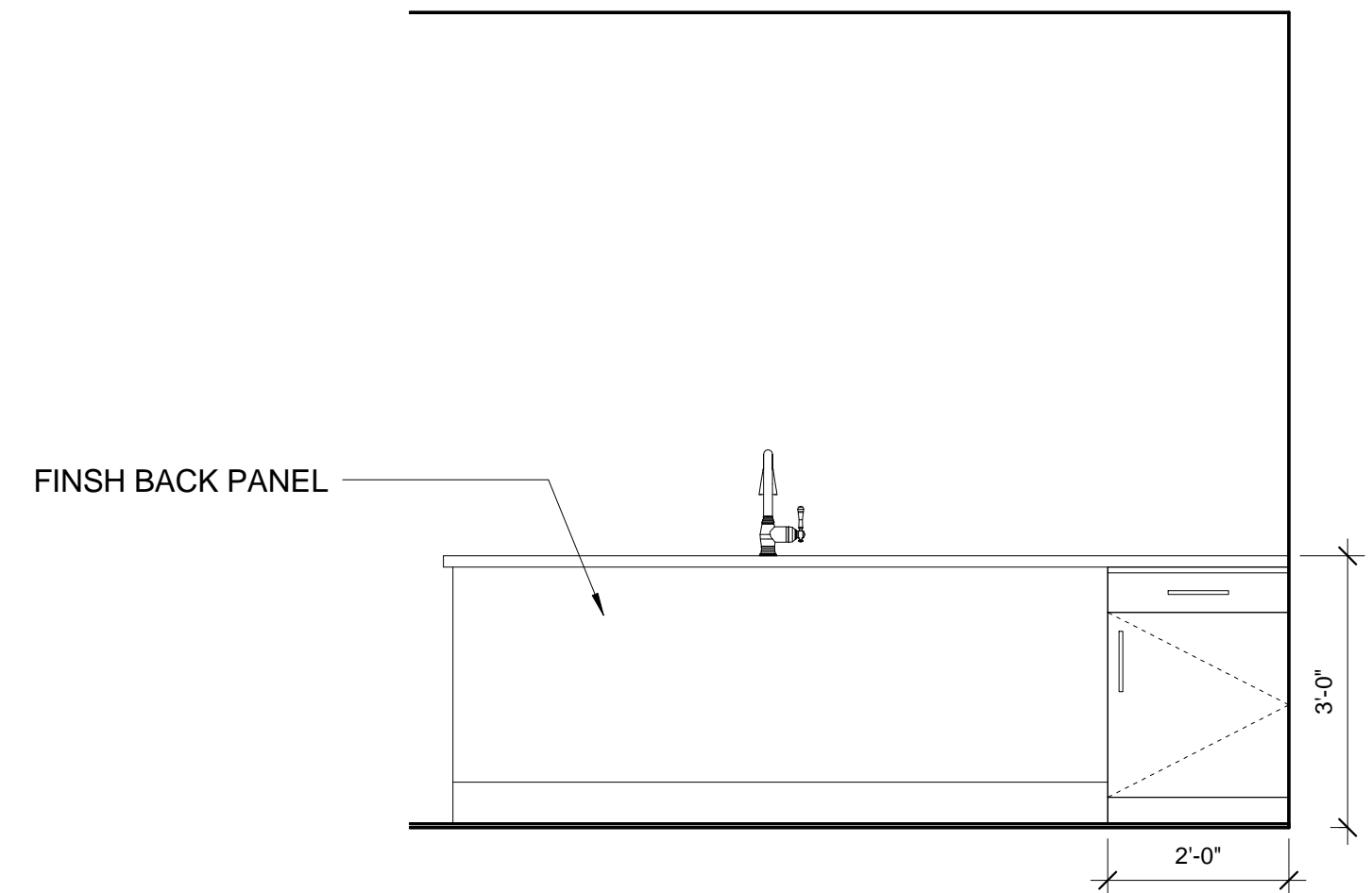
NOTE: AT INSTALLATIONS WHERE CABINET ENDS AND/OR BACKS ARE EXPOSED, PROVIDE FINISH END AND/OR BACK PANELS AS REQUIRED. LEAVE 1/2" OVERHANG ON COUNTER TOP. PROVIDE FILLER PANEL AS REQUIRED FOR BASE AND WALL CABINETS.



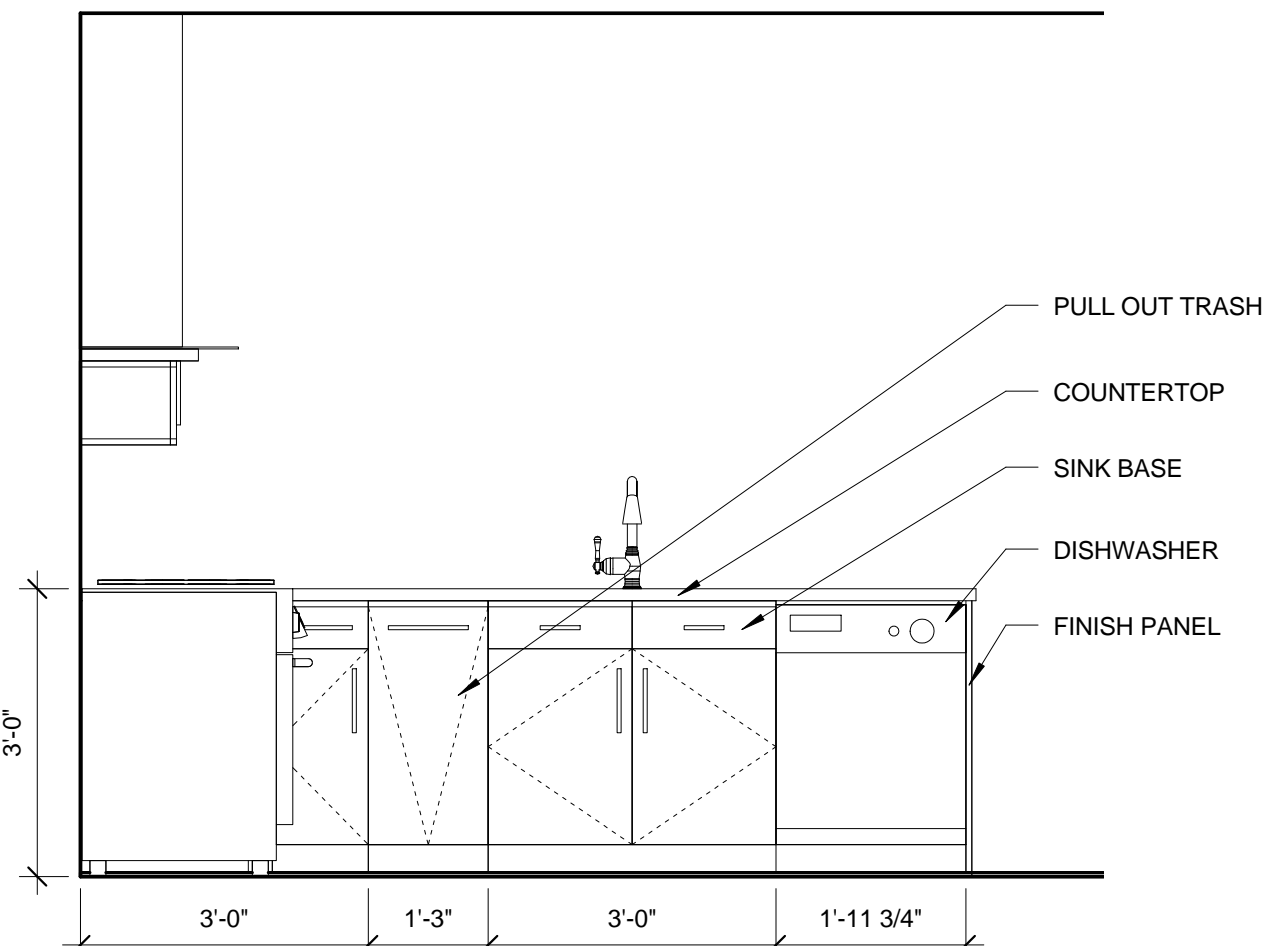
13 UNIT 202 AND 302 ELEV. B
1/2" = 1'-0"



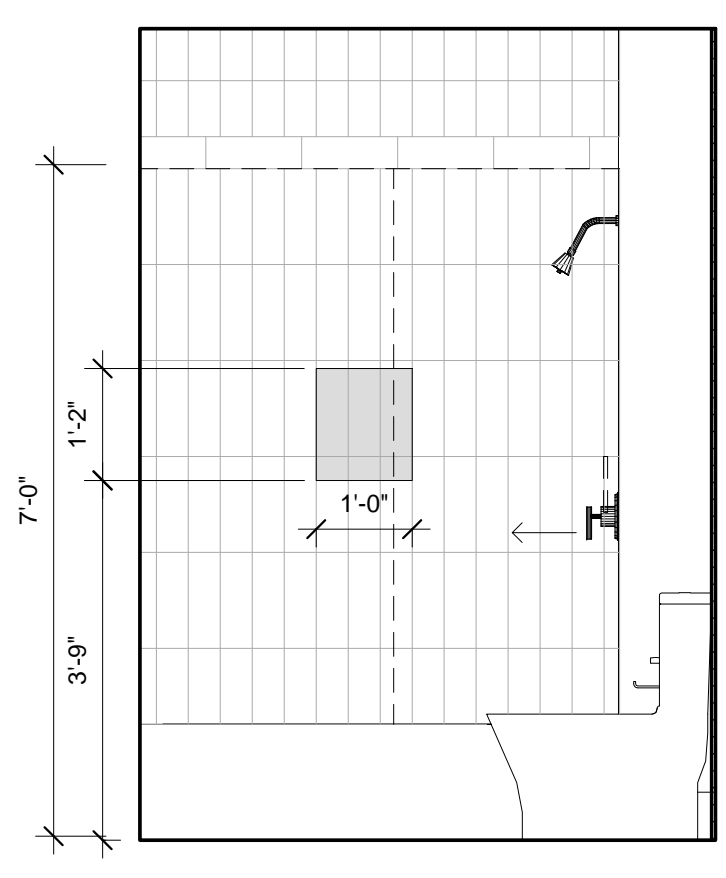
12 UNIT 202 AND 302 ELEV. A
1/2" = 1'-0"



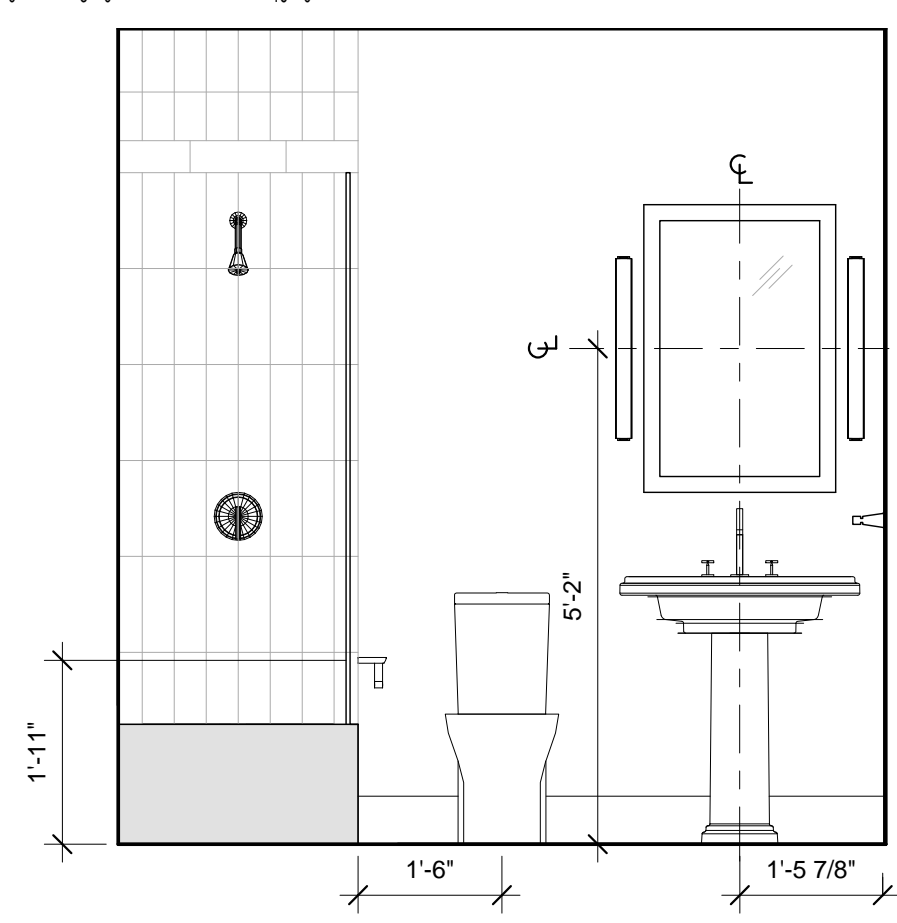
11 UNIT 202 AND 302 ELEV. D
1/2" = 1'-0"



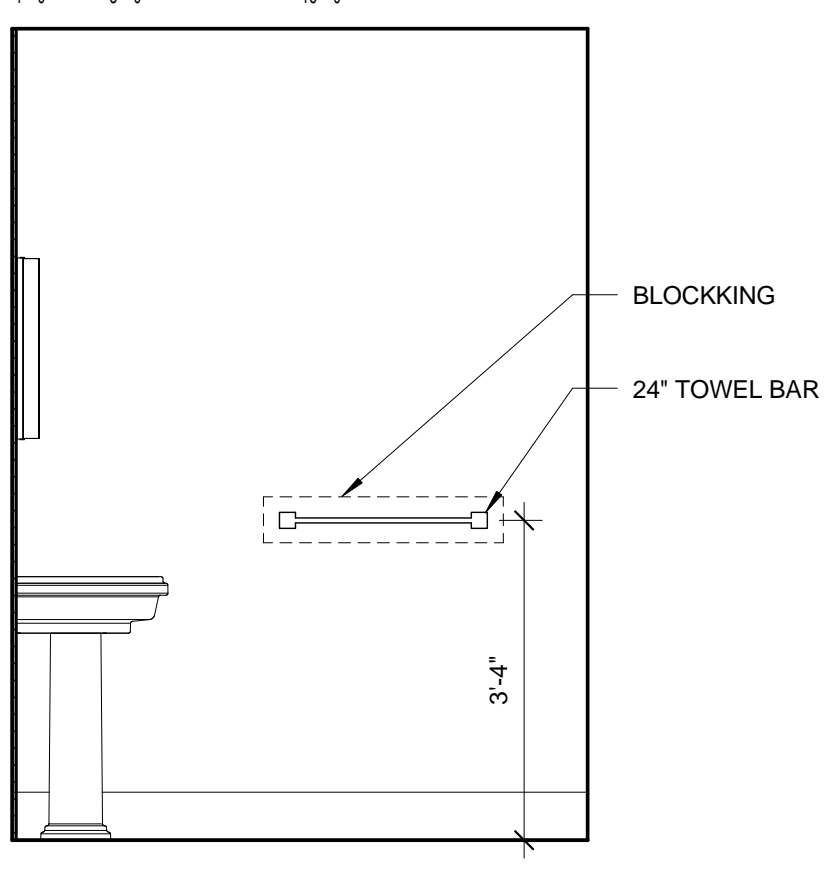
10 UNIT 202 AND 302 ELEV. C
1/2" = 1'-0"



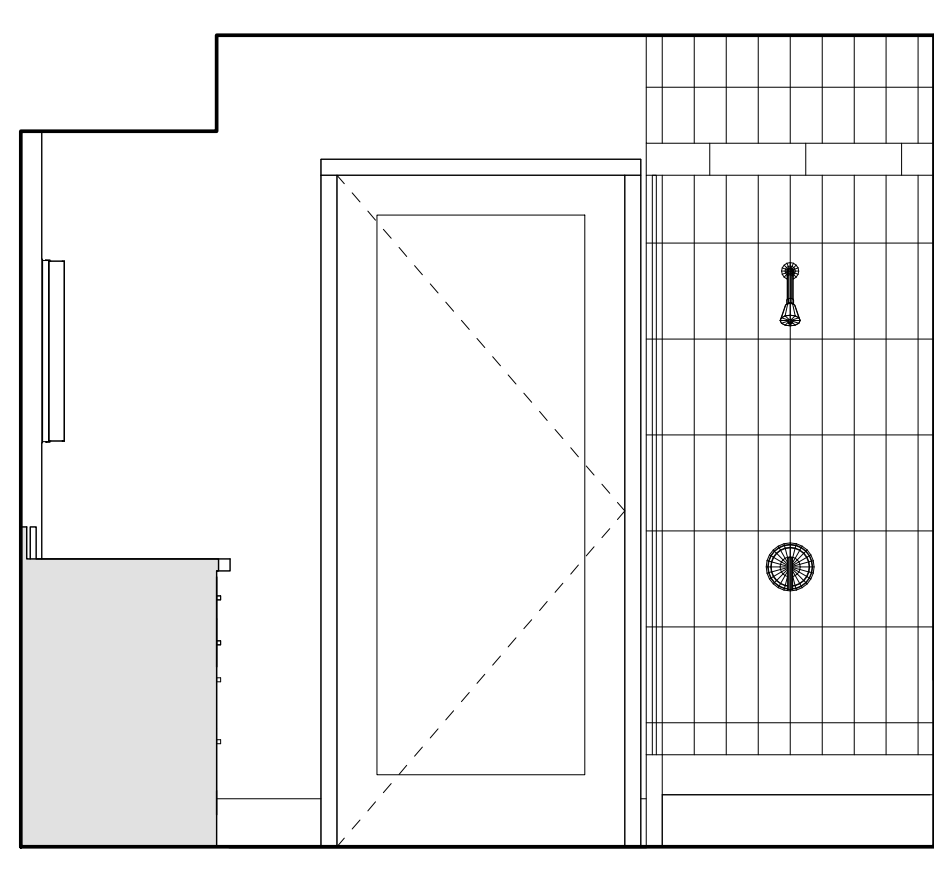
9 BATH 202 302 ELEV C
1/2" = 1'-0"



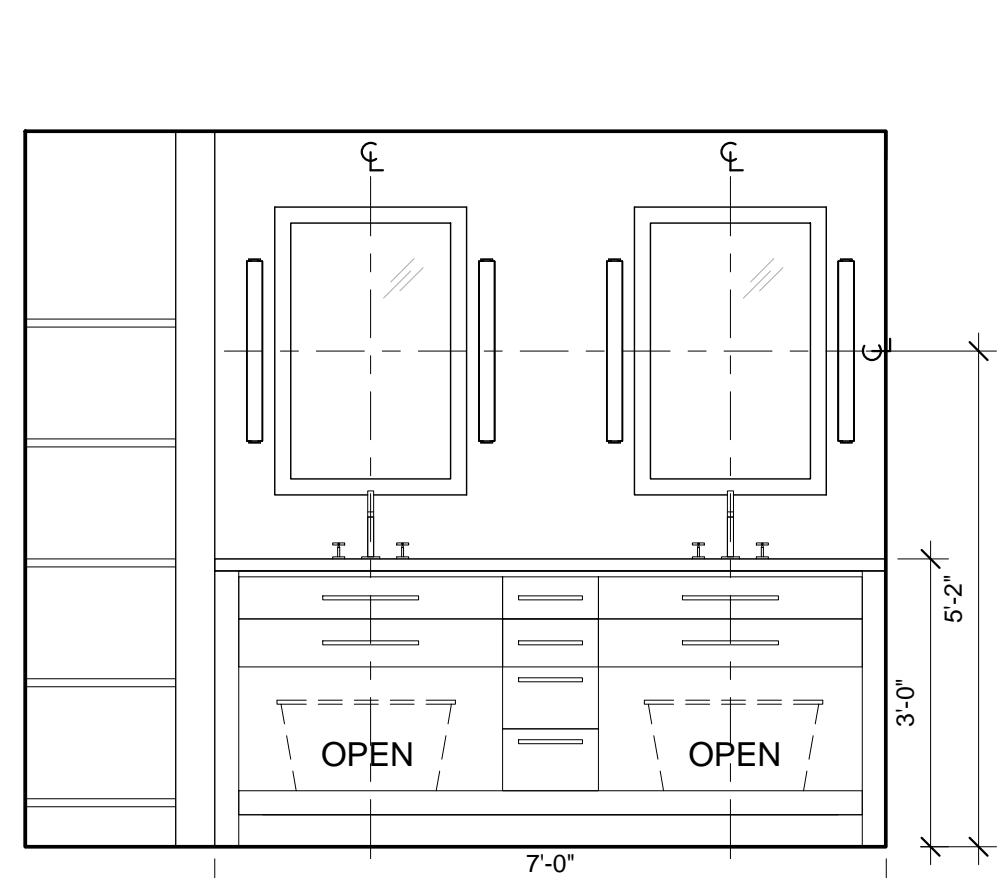
8 BATH 202 302 ELEV B
1/2" = 1'-0"



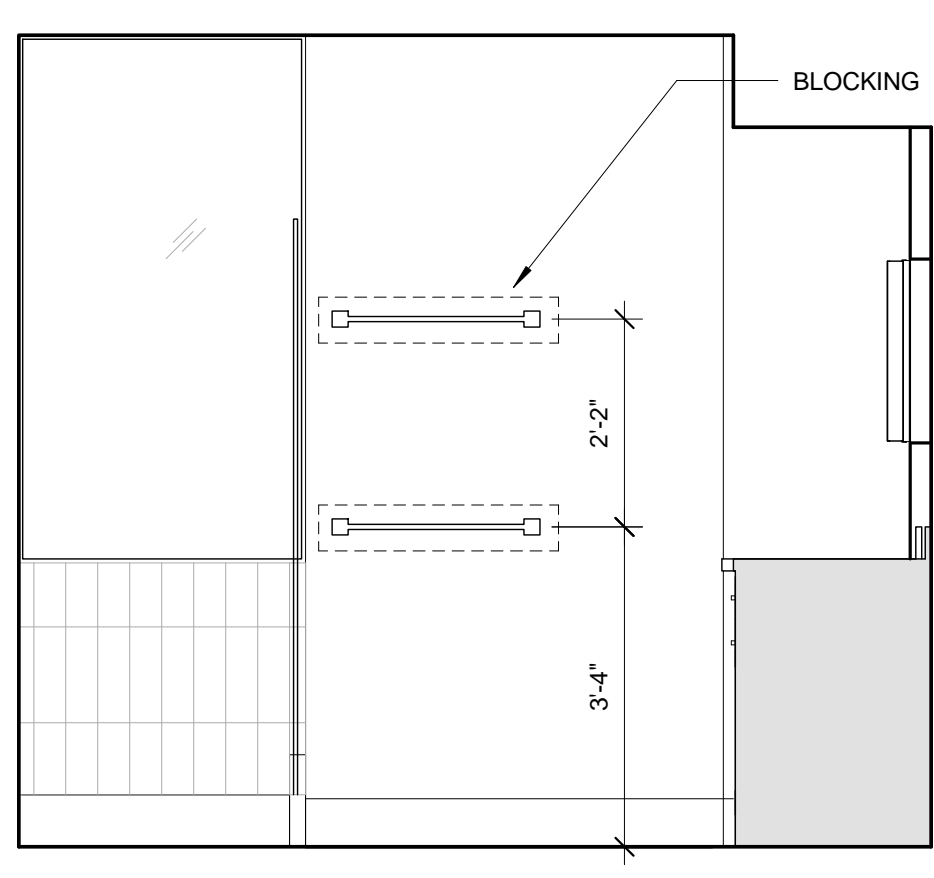
7 BATH 202 302 ELEV A
1/2" = 1'-0"



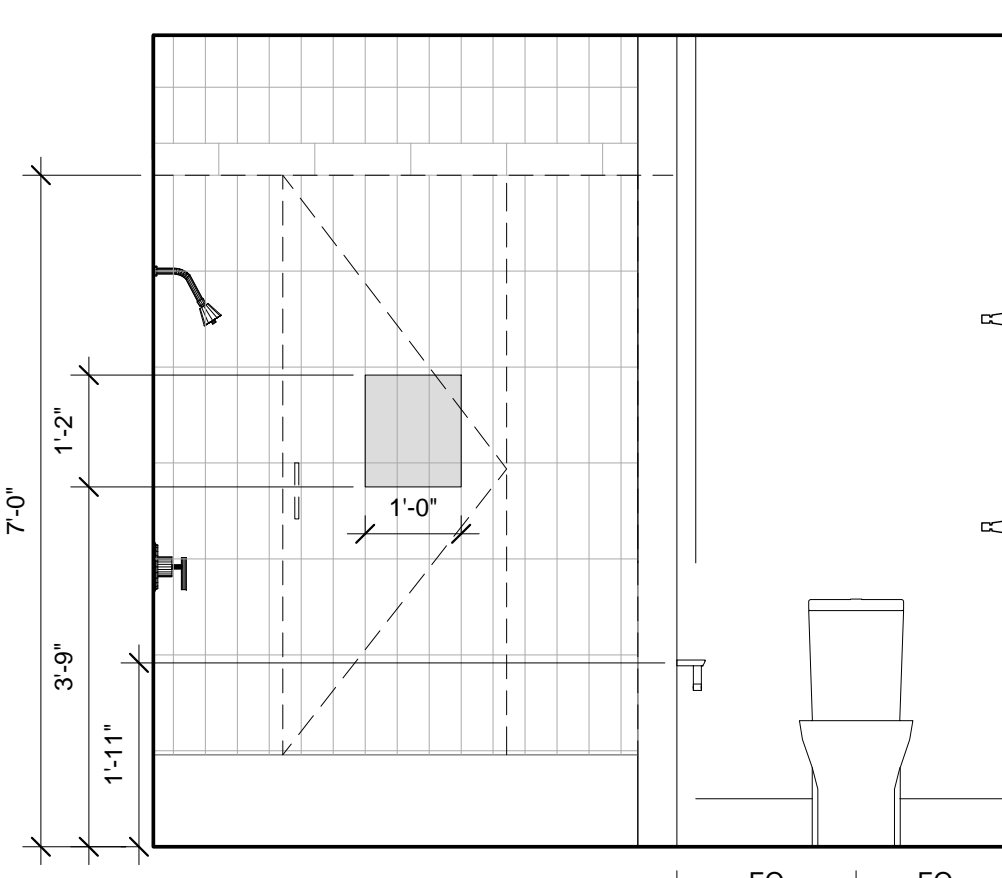
6 PRIM BATH 202 302 ELEV. D
1/2" = 1'-0"



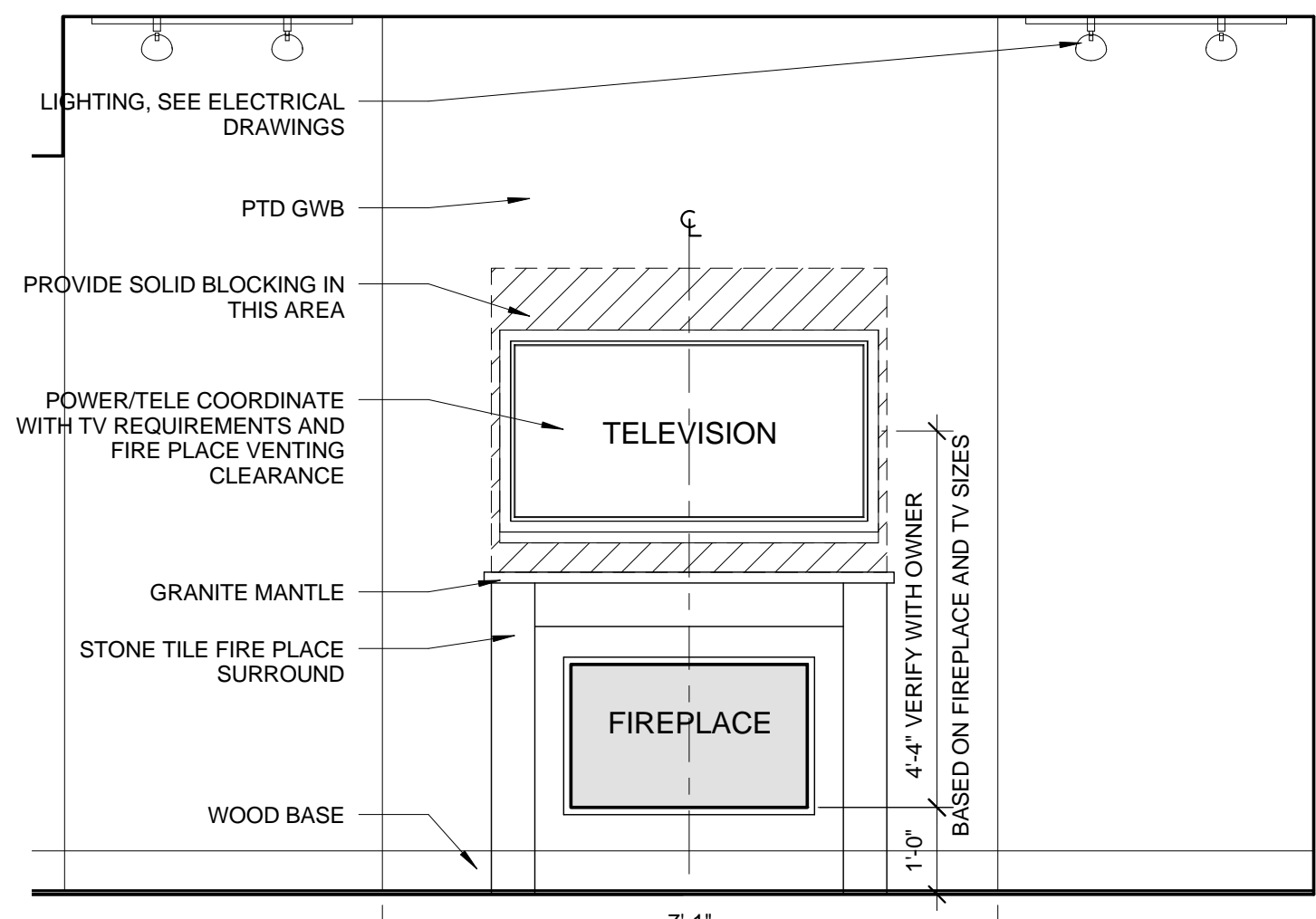
5 PRIM BATH 202 302 ELEV C
1/2" = 1'-0"



4 PRIM BATH 202 302 ELEV B
1/2" = 1'-0"



3 PRIM BATH 202 302 ELEV A
1/2" = 1'-0"



2 LR 202 302 ELEV
1/2" = 1'-0"