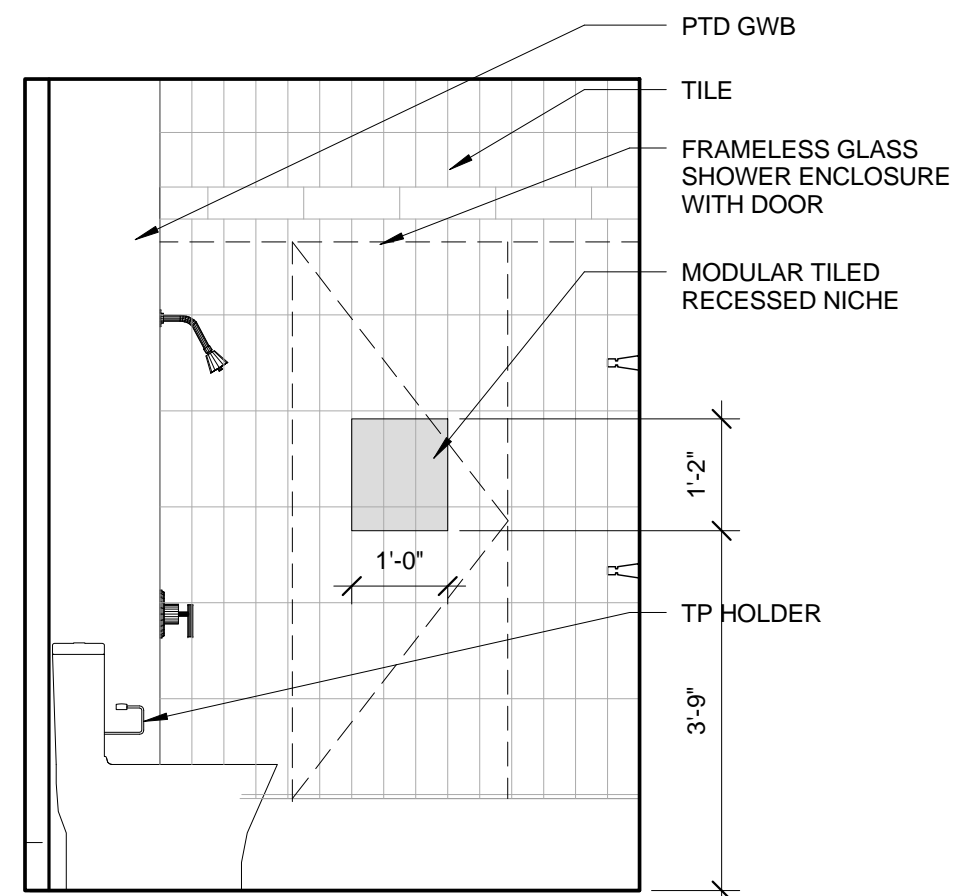
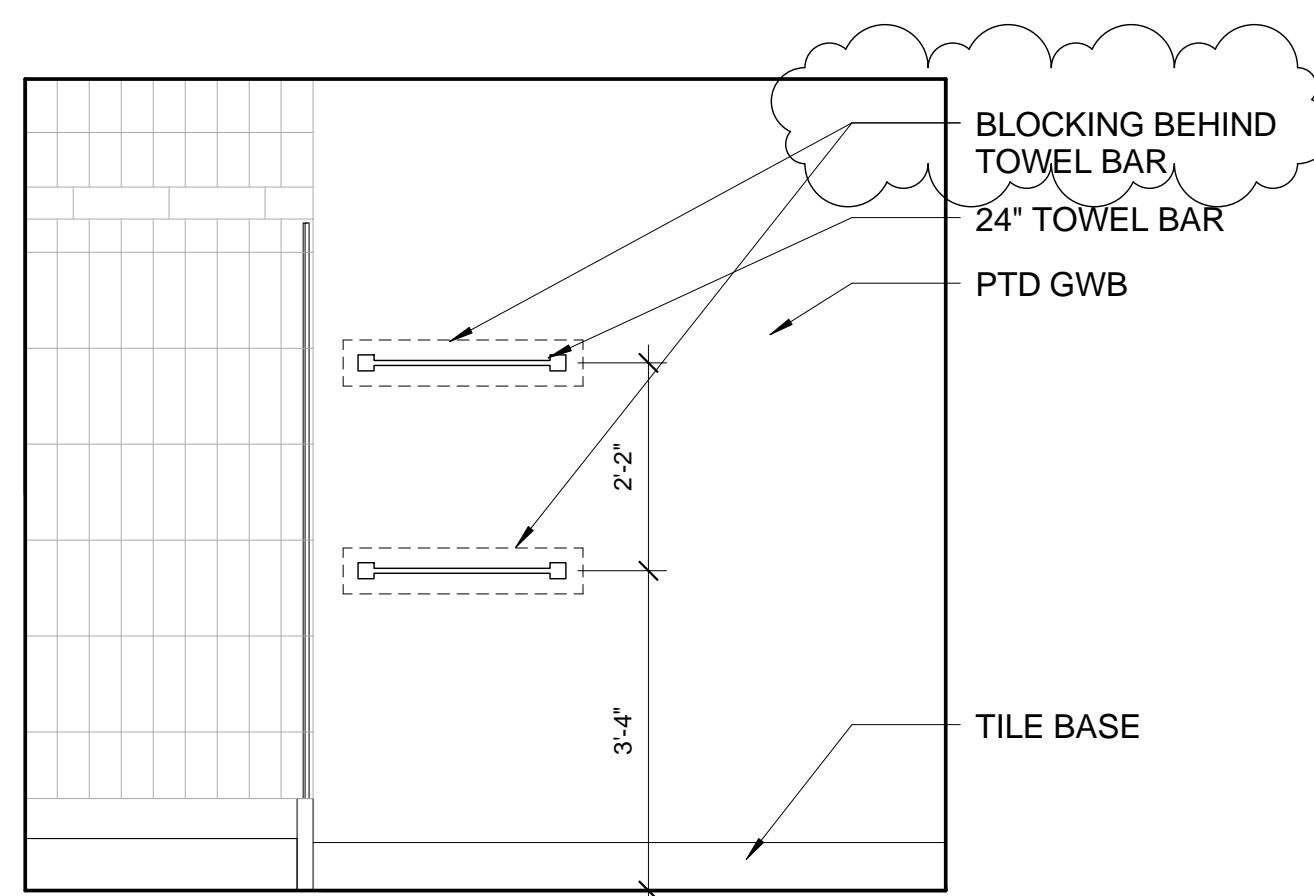


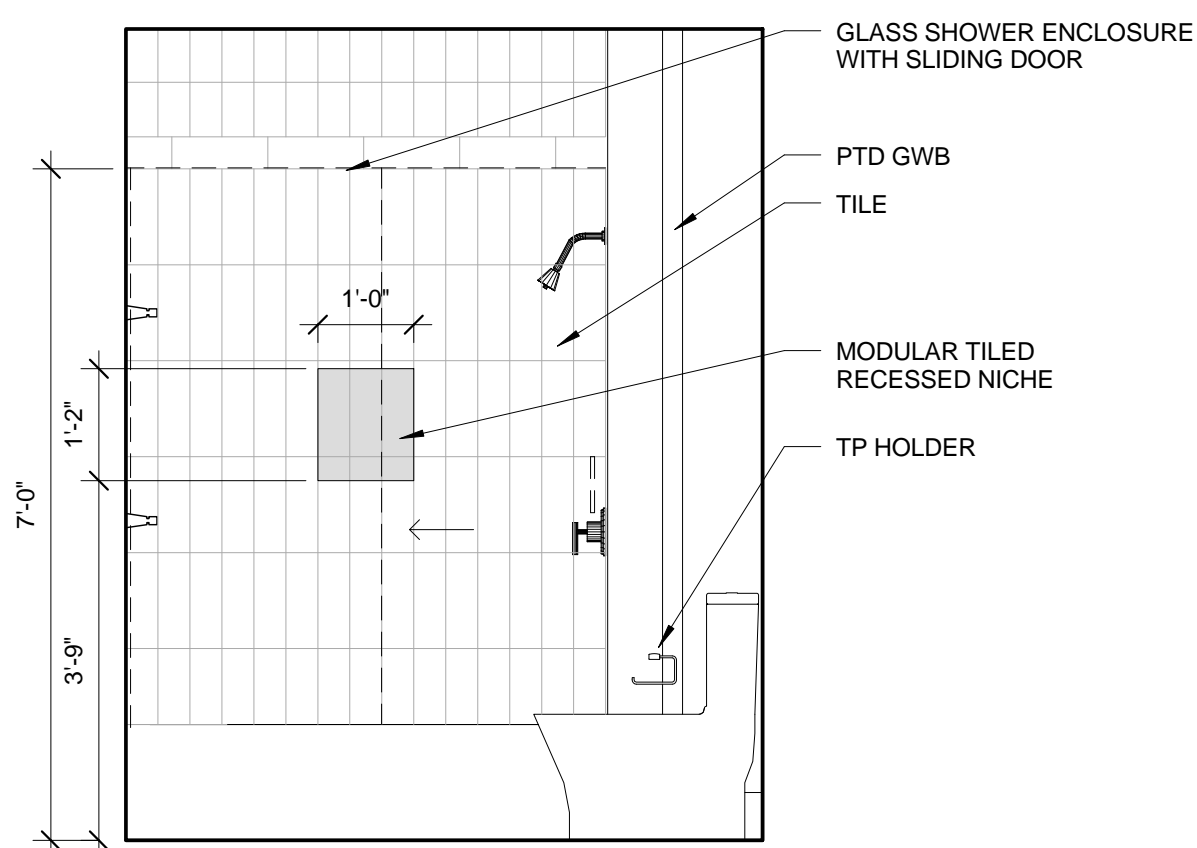
10 PRIM BATH 201 301 ELEV C
1/2" = 1'-0"



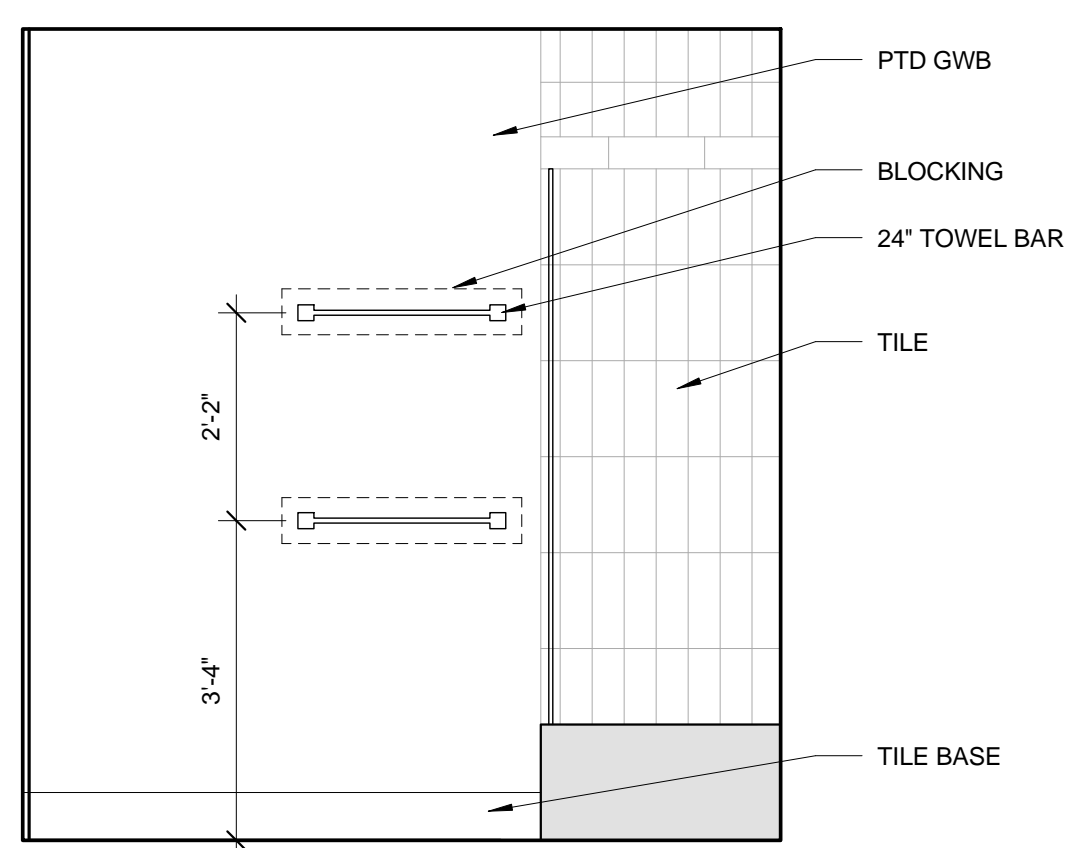
9 PRIM BATH 201 301 ELEV B
1/2" = 1'-0"



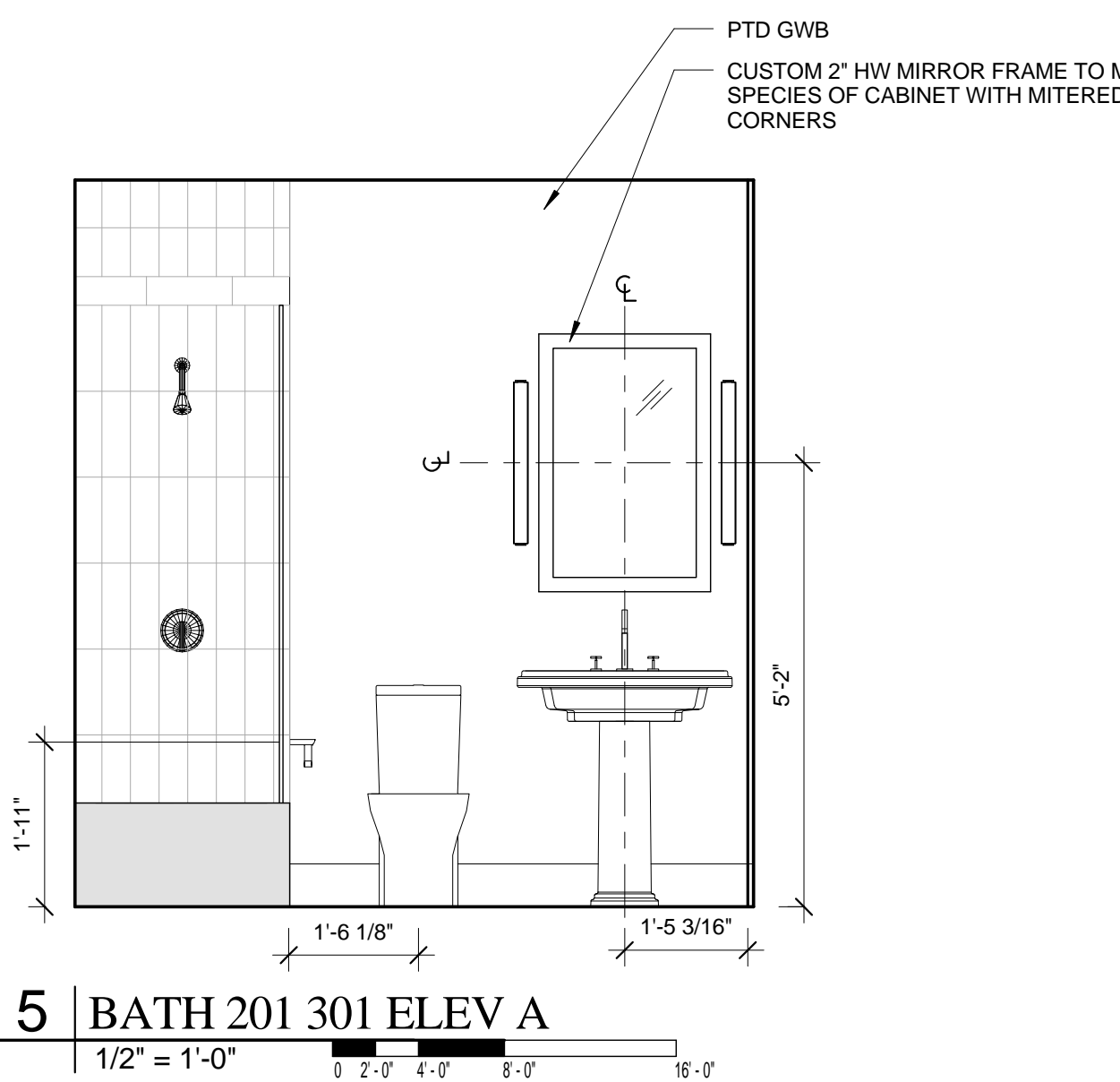
8 PRIM BATH 201 301 ELEV A
1/2" = 1'-0"



7 BATH 201 301 ELEV C
1/2" = 1'-0"



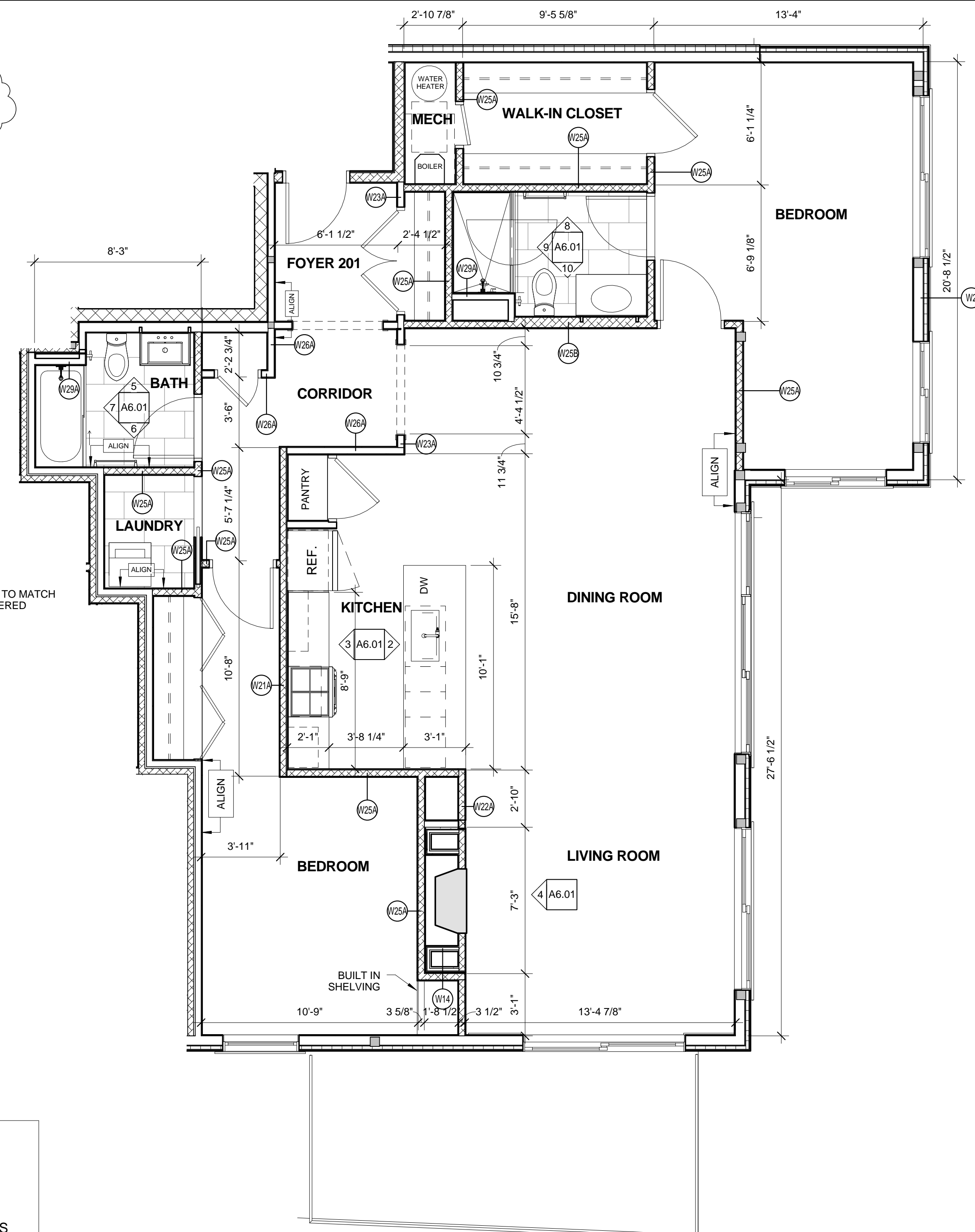
6 BATH 201 301 ELEV B
1/2" = 1'-0"



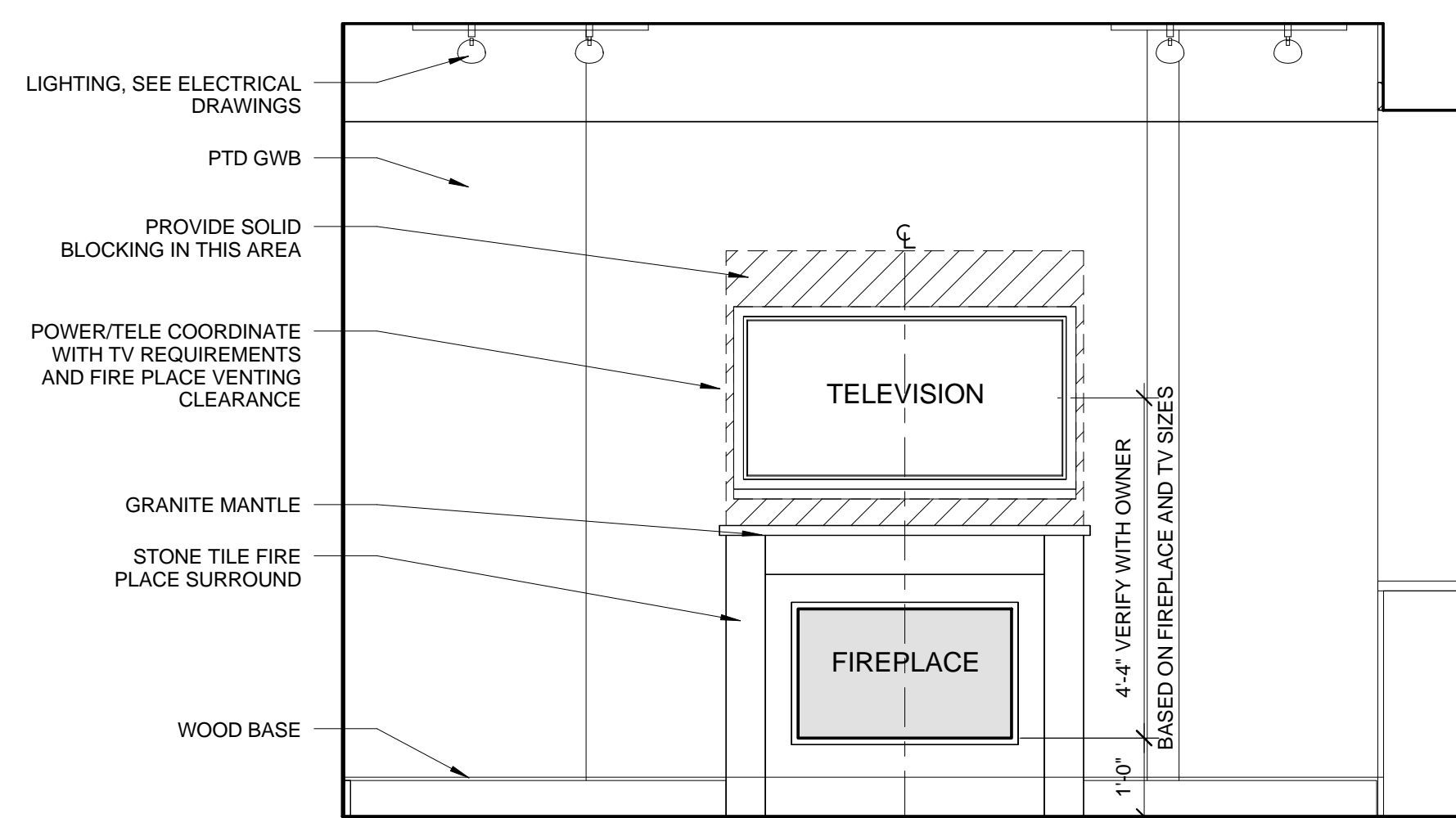
5 BATH 201 301 ELEV A
1/2" = 1'-0"

UNIT GENERAL NOTES:

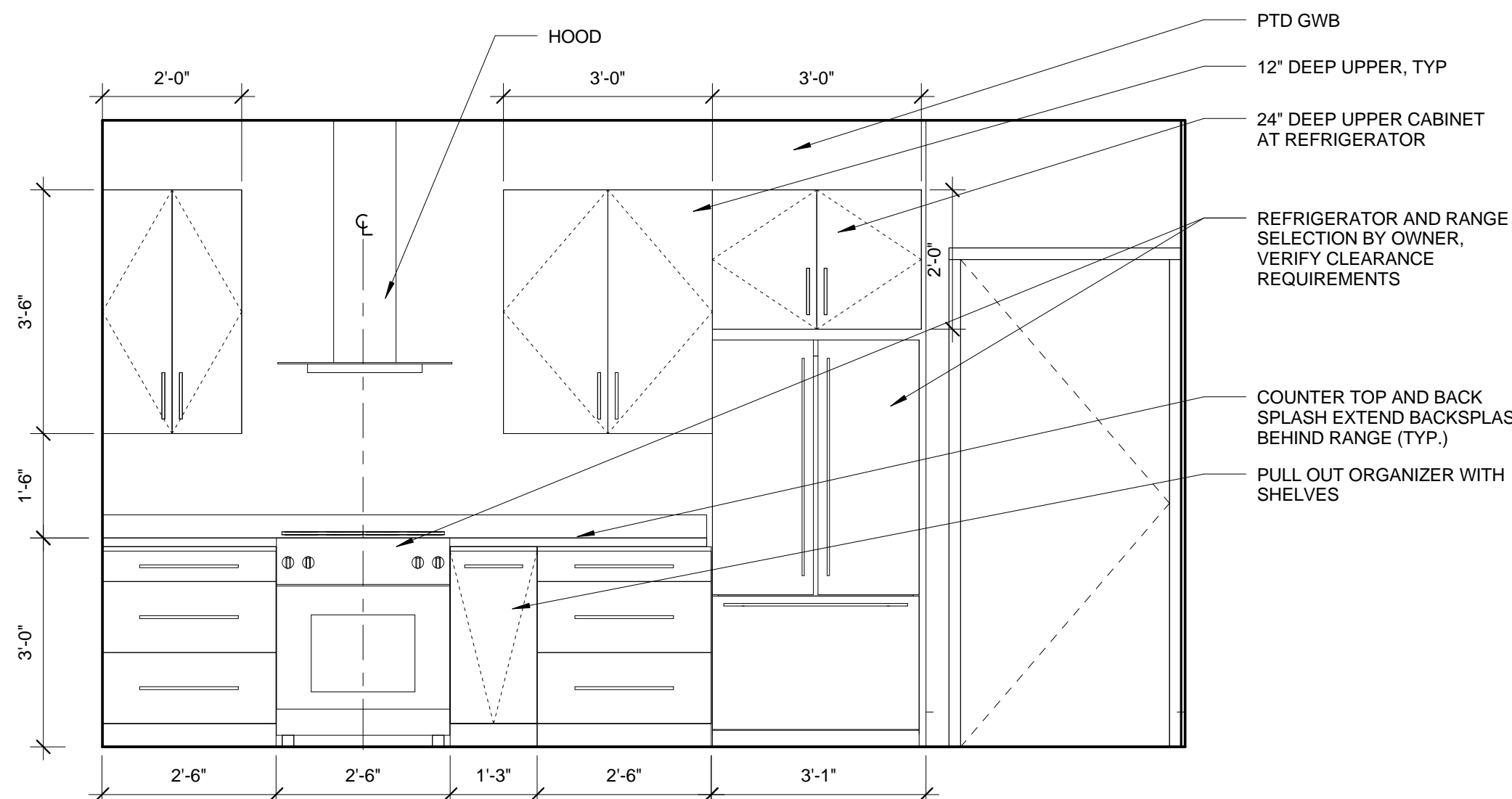
1. AT INSTALLATIONS WHERE CABINET ENDS AND/OR BACKS ARE EXPOSED, PROVIDE FINISH END AND/OR BACK PANELS AS REQUIRED. LEAVE 1/2" OVERHANG ON COUNTER TOP. PROVIDE FILLER PANEL AS REQUIRED FOR BASE AND WALL CABINETS.
2. DOUBLE LAYER OF GYP BOARD AT ALL TUB & SHOWER FLANGES
3. GYP BOARD CONTINUOUS BEHIND TUB & SHOWER AT ALL CORRIDOR WALLS & PARTY WALLS
4. SEE DRAWING A4.06 FOR TYPICAL CLOSET SHELVING ELEVATIONS
5. FLOORING IN CLOSETS TO MATCH ROOM FINISH UNLESS NOTED OTHERWISE
6. PROVIDE BLOCKING BEHIND UPPER CABINETS AT THE TOP AND BOTTOM



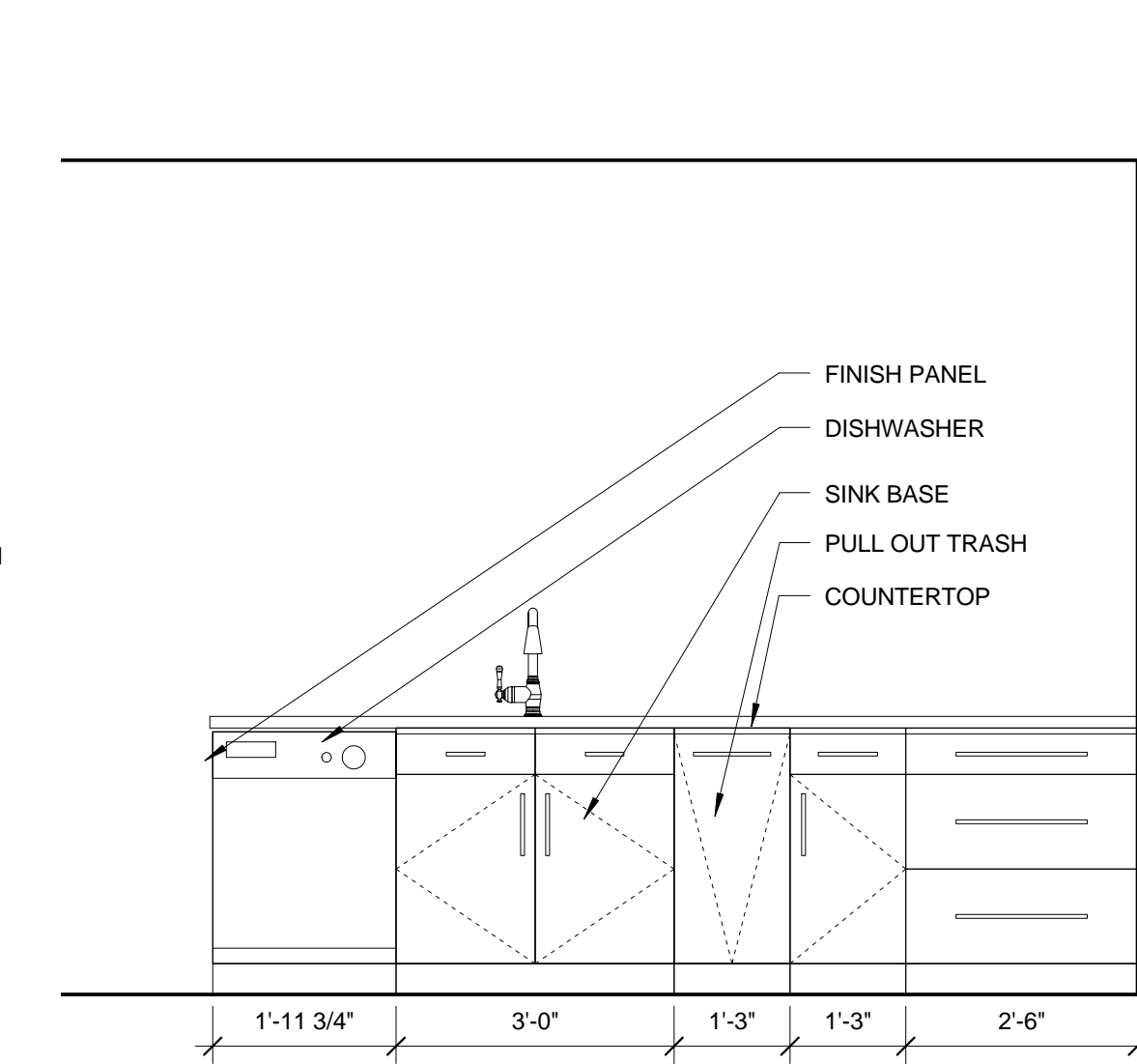
1 ENLARGED PLAN 201 301
1/4" = 1'-0"



4 LR 201 301 ELEV
1/2" = 1'-0"



3 UNIT 201 AND 301 ELEV. A
1/2" = 1'-0"



2 UNIT 201 AND 301 ELEV. B
1/2" = 1'-0"



Prepared For:
BATEMAN PARTNERS, LLC.
470 FORE STREET
PORTLAND, ME 04101

Consultant:

ARCHETYPE architects
48 Union Wharf Portland, Maine 04101
(207) 772-6022 Fax (207) 772-4056

Architect:

Project:
185 Fore Street

185 Fore Street, Portland Maine

Revisions:
2 06-12-20 ADDENDUM 1
15

Date:
12 JUNE, 2015
Scale:
As indicated

ENL. PLANS INT. ELEV.
UNIT 201 AND 301

A6.01