

Prepared For:
BATEMAN PARTNERS, L.L.C.
 470 FORE STREET
 PORTLAND, ME 04101

Consultant:

Architect:
ARCHETYPE architects
 48 Union Wharf Portland, Maine 04101
 (207) 772-6022 Fax (207) 772-4056

Project:

185 Fore Street

185 Fore Street, Portland Maine

Revisions:

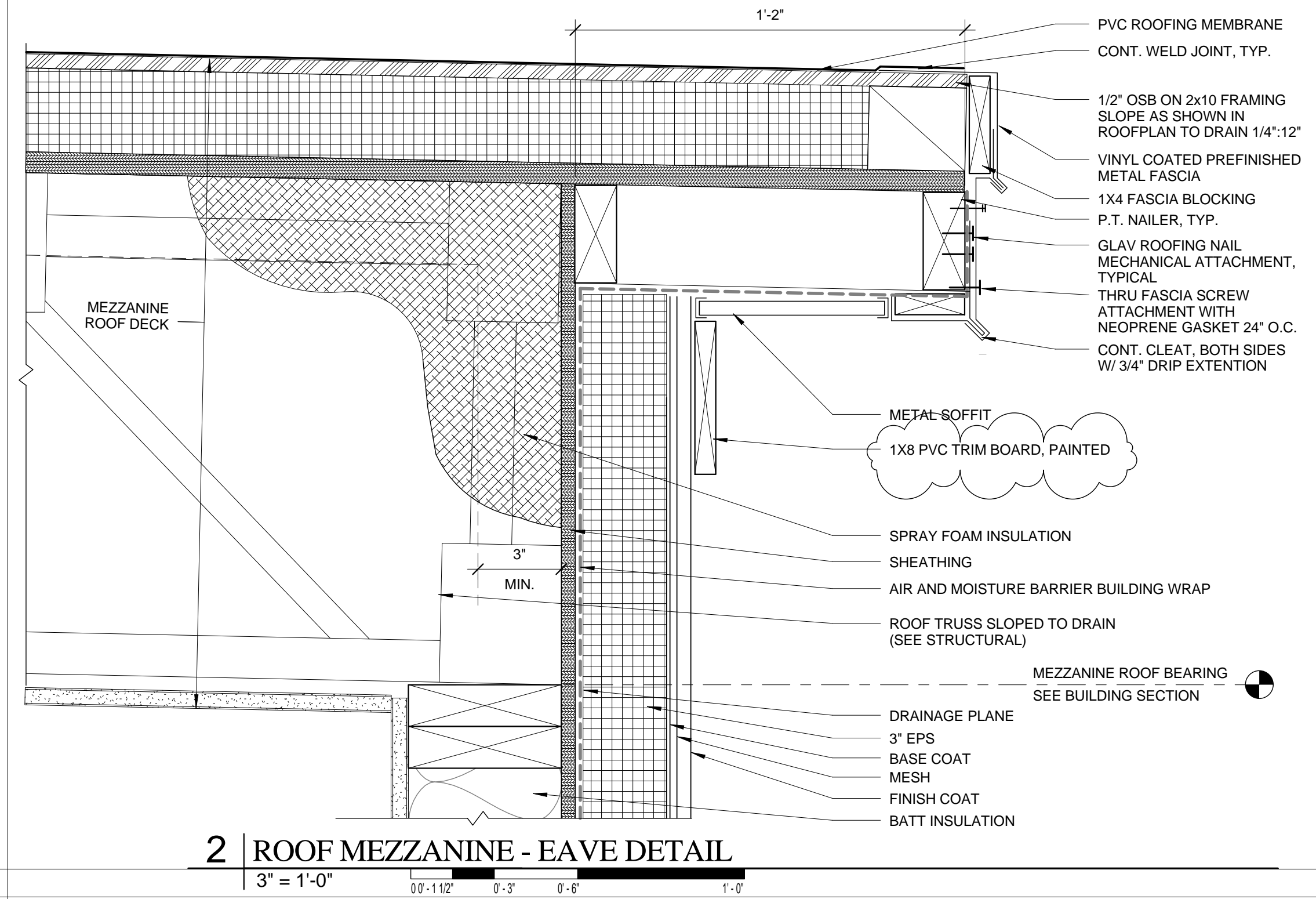
NO.	DATE	DESCRIPTION
1	05-22-2014	BID SET
2	06-12-2015	ADDENDUM 1

Scale:

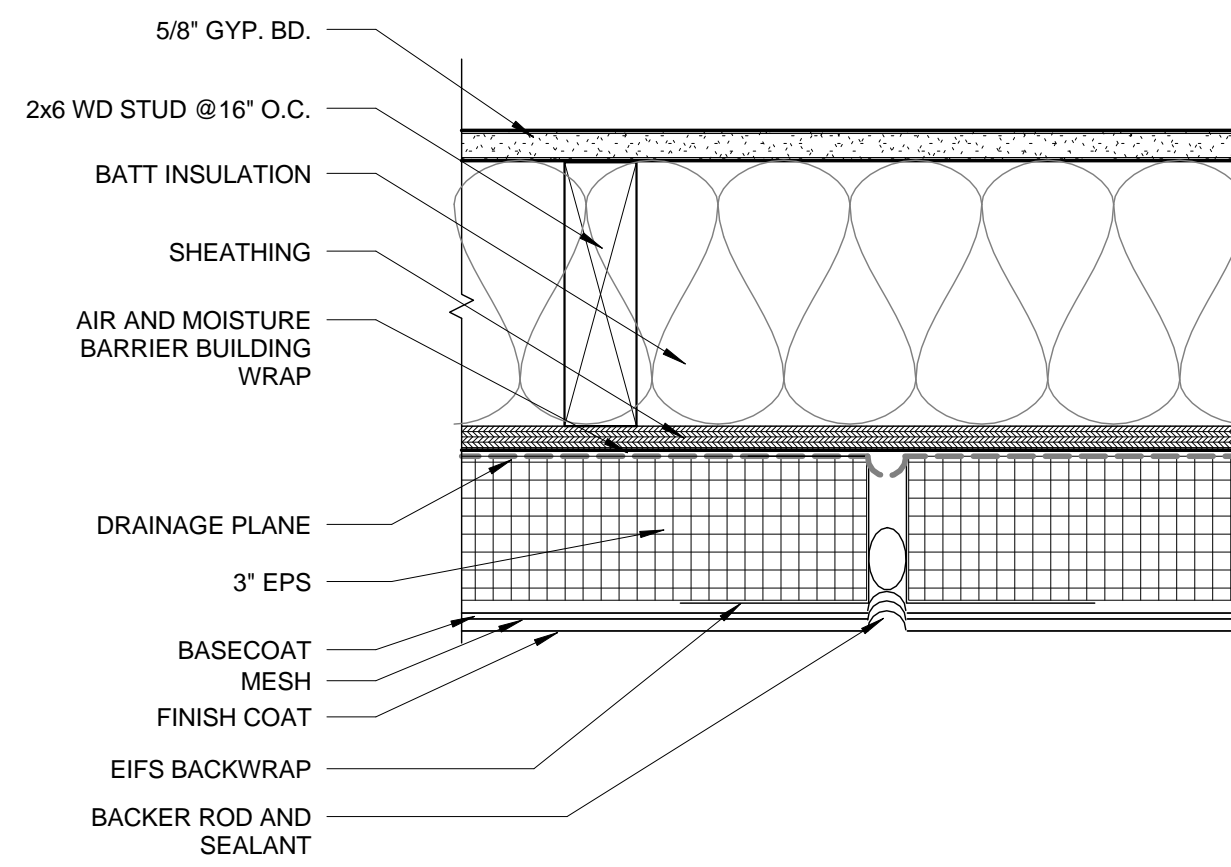
Date:

A5.12

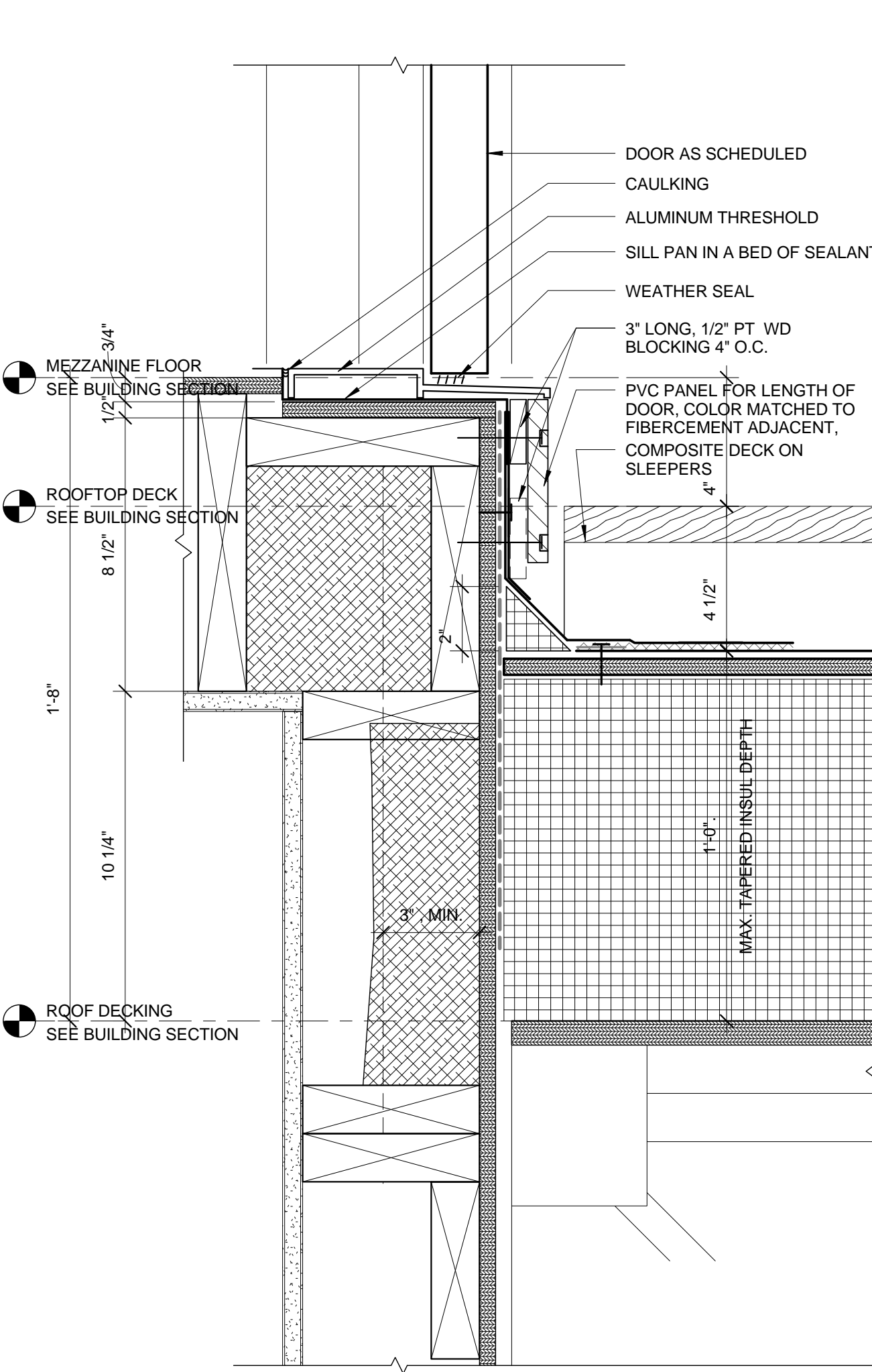
As indicated
 12 JUNE, 2015
 EXTERIOR DETAILS -
 ROOF DETAILS



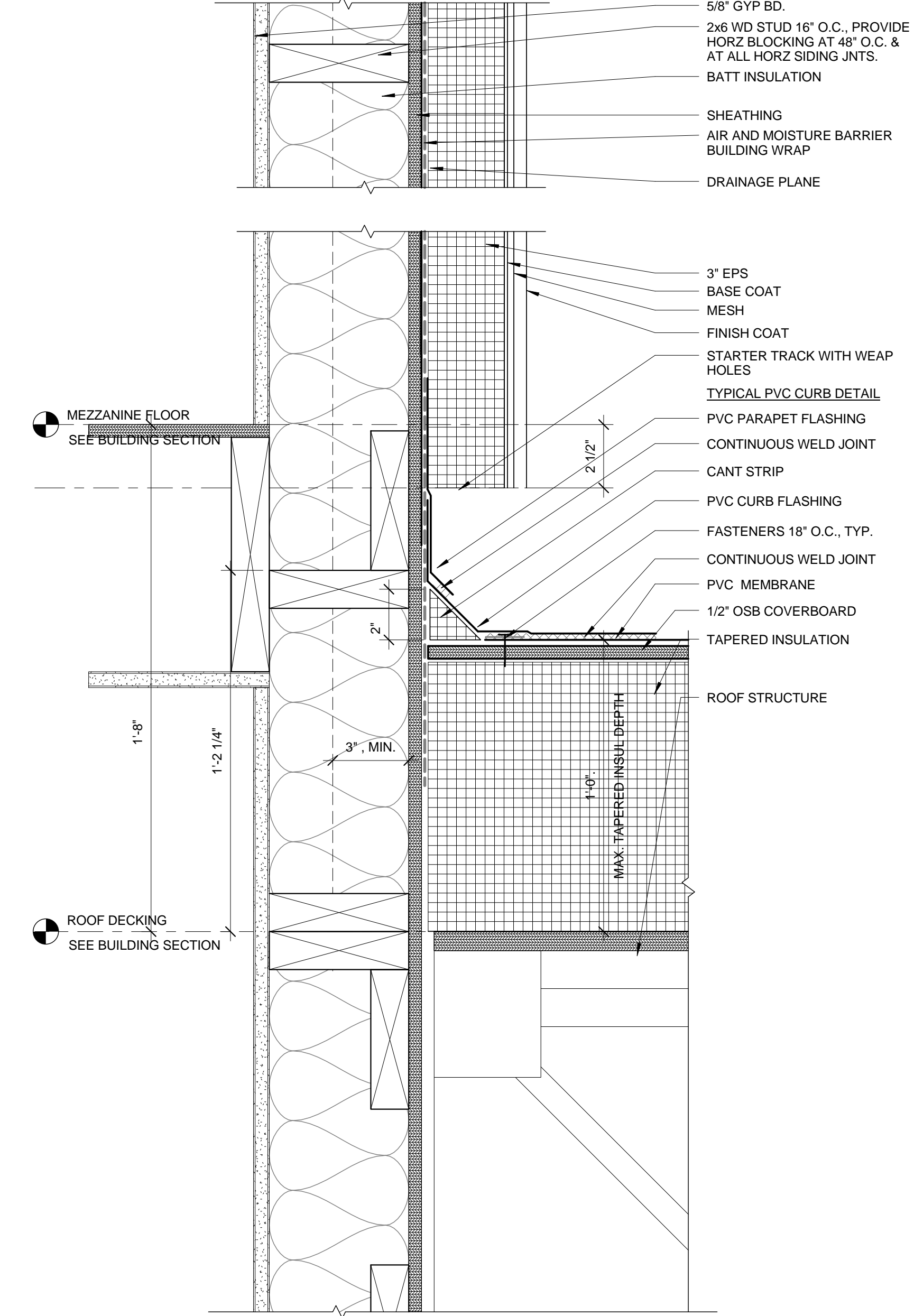
2 | ROOF MEZZANINE - EAVE DETAIL
 3" = 1'-0"



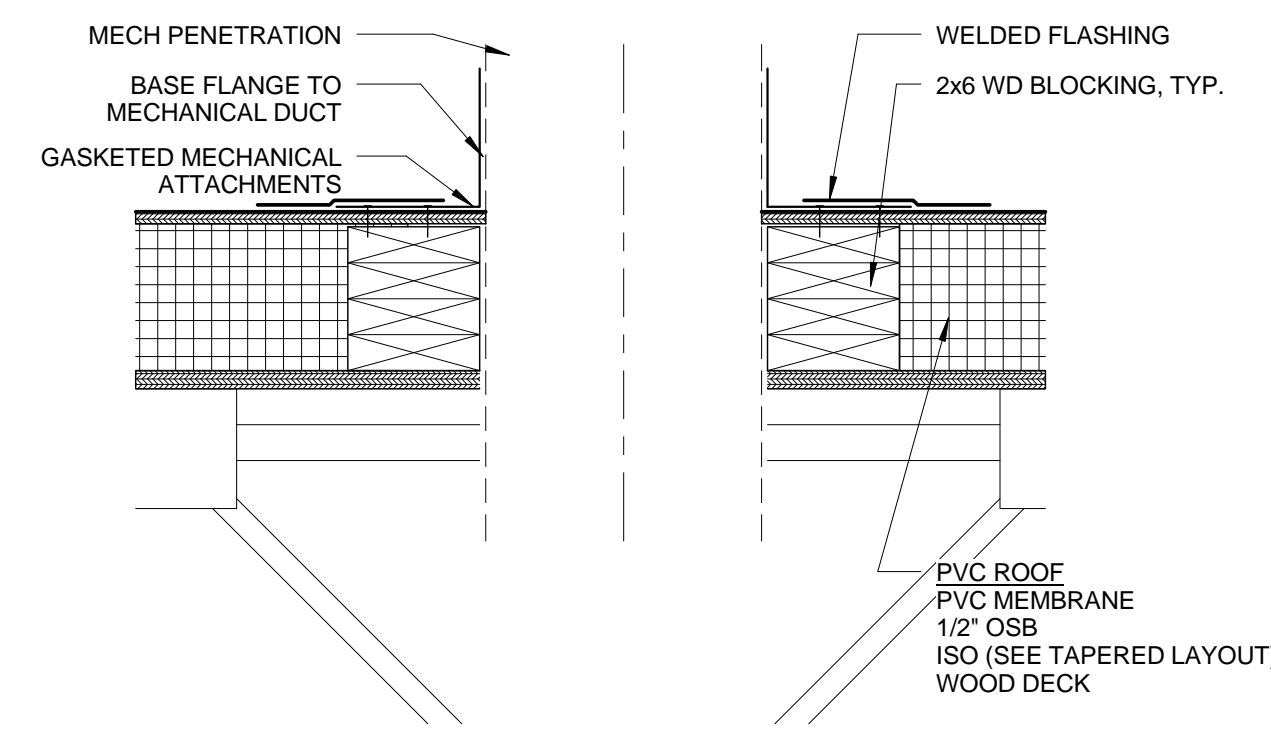
4 | ROOF MEZZANINE - EXPANSION JOINT
 3" = 1'-0"



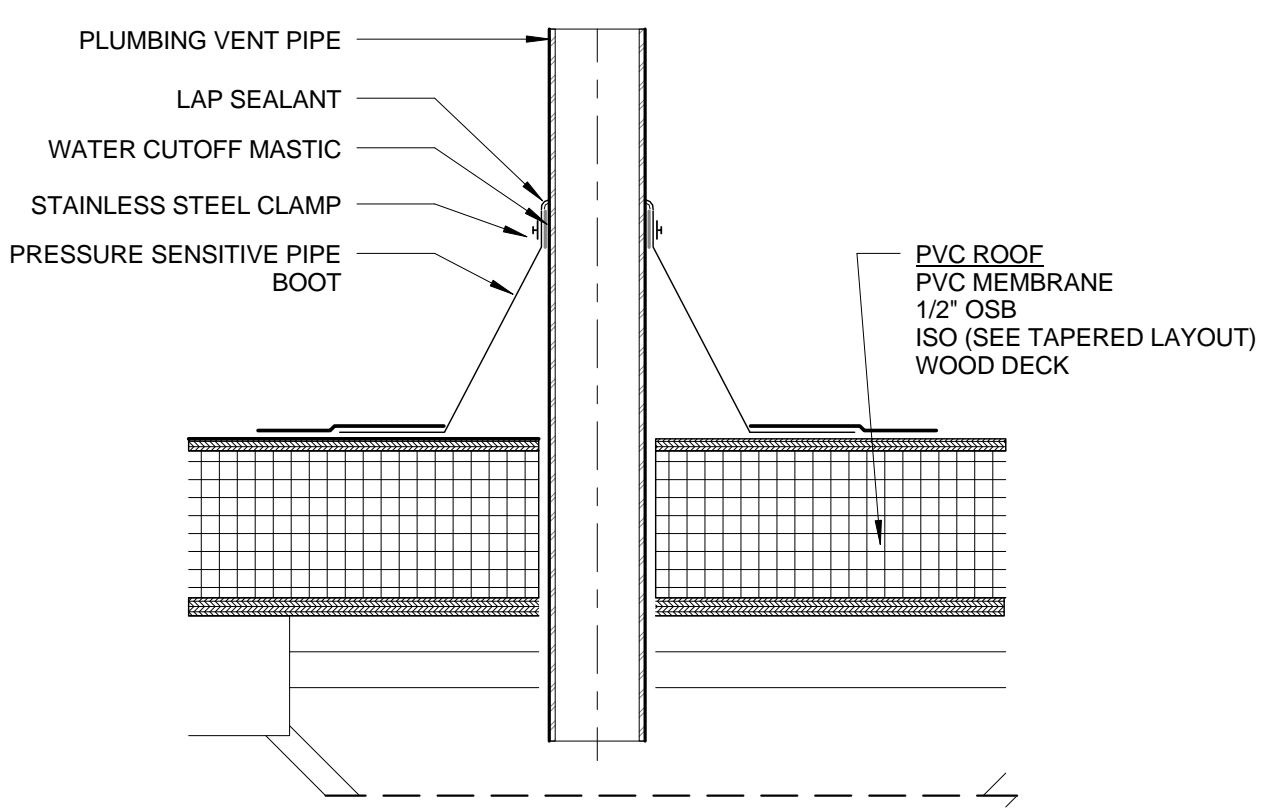
3 | ROOF MEZZANINE - DOOR DETAIL
 3" = 1'-0"



1 | ROOF MEZZANINE - BASE OF WALL
 3" = 1'-0"



7 | ROOF DETAIL - TYP. MECH PENETRATION
 1 1/2" = 1'-0"



6 | ROOF DETAIL - PIPE PENETRATION
 1 1/2" = 1'-0"