

Prepared For:
BATEMAN PARTNERS, LLC.
 470 FORE STREET
 PORTLAND, ME 04101

Consultant:
ARCHETYPE architects
 48 Union Wharf Portland, Maine 04101
 (207) 772-6022 Fax (207) 772-4056

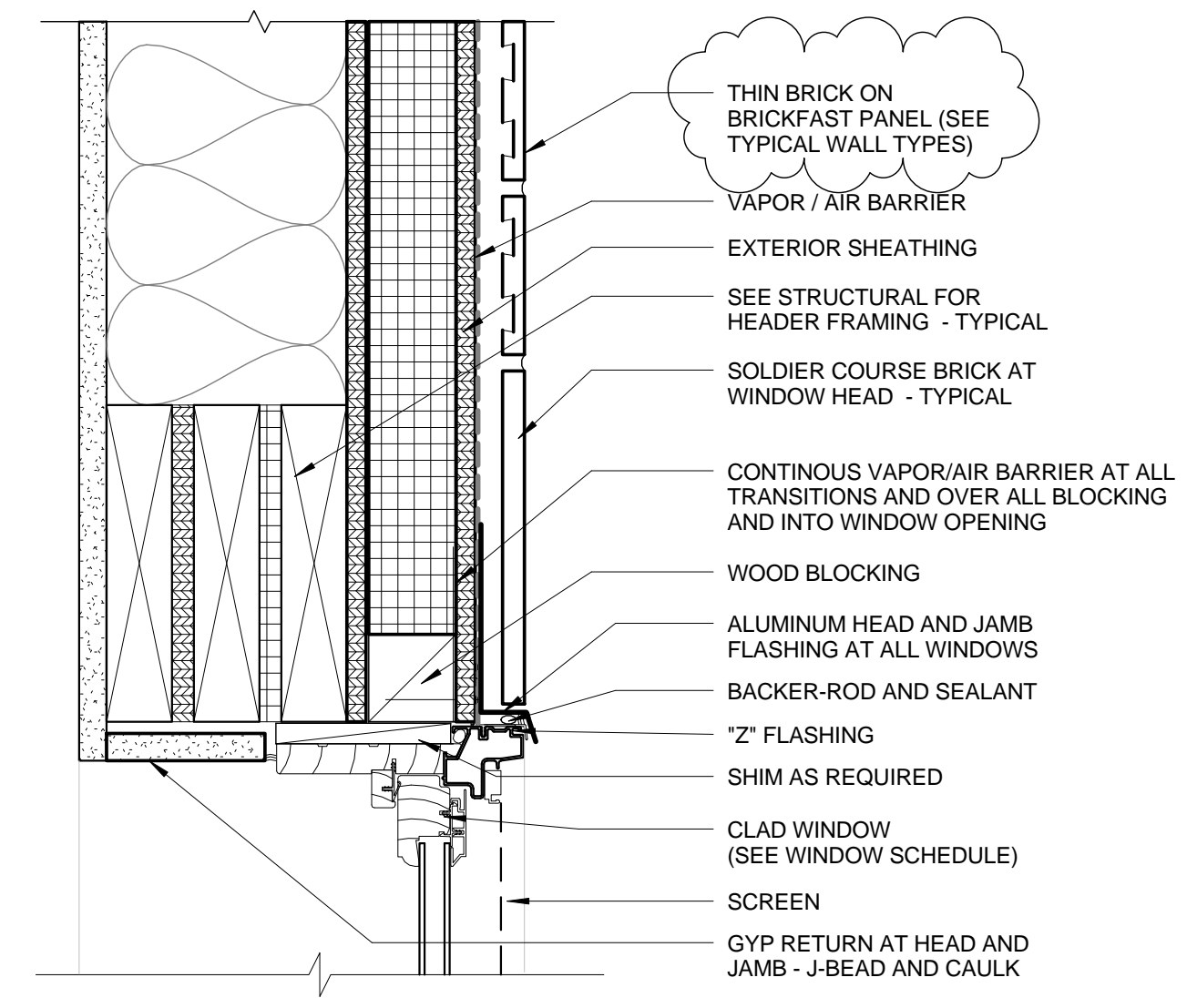
Architect:
ARCHETYPE architects
 48 Union Wharf Portland, Maine 04101
 (207) 772-6022 Fax (207) 772-4056

Project:
 185 Fore Street
 185 Fore Street, Portland Maine

Revisions:
 1 05-22-2014 BID SET
 2 06-12-2015 ADDENDUM 1

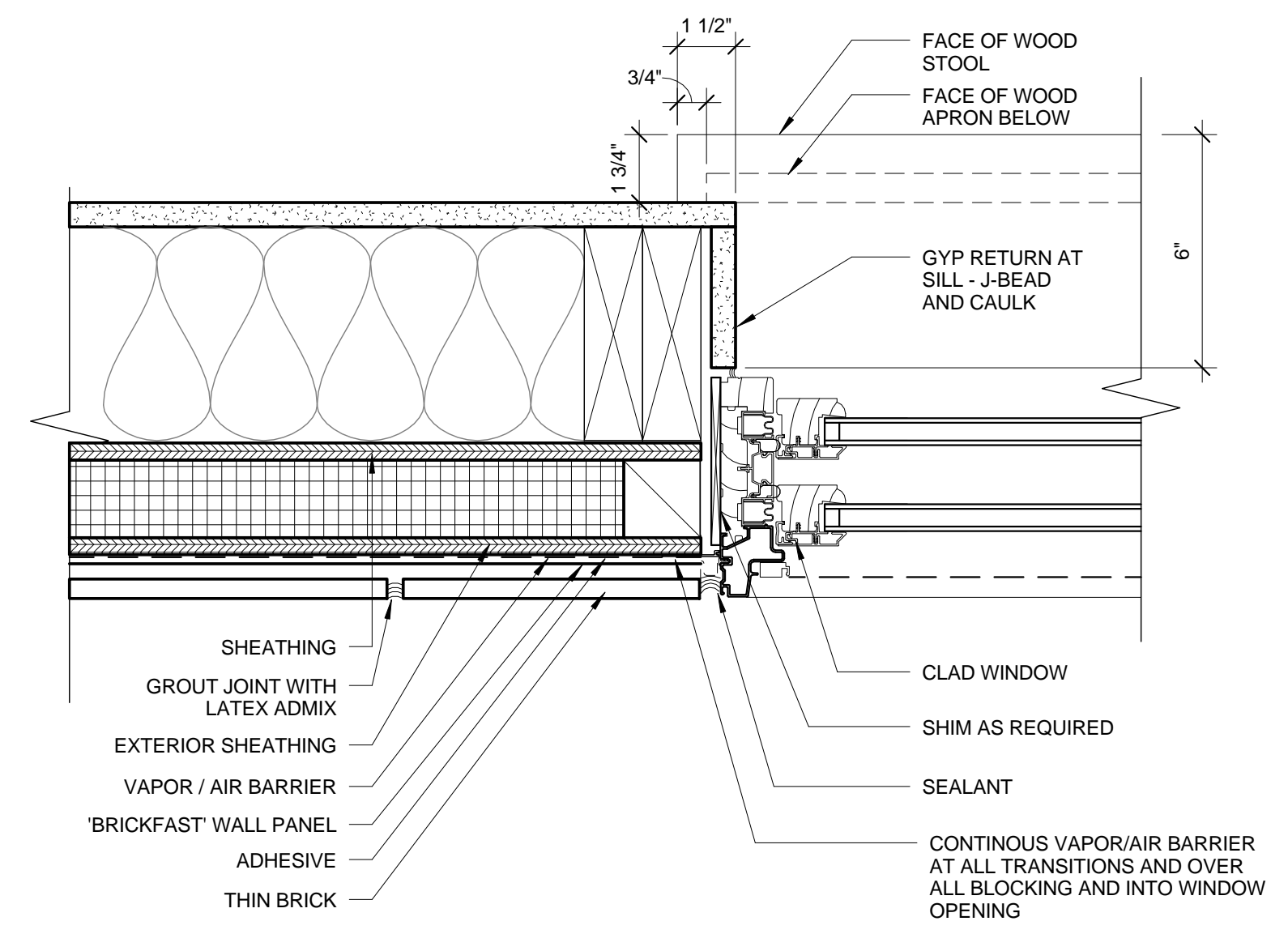
Date: 12 JUNE, 2015
 Scale: As indicated
 EXTERIOR DETAILS -
 WINDOWS

A5.01



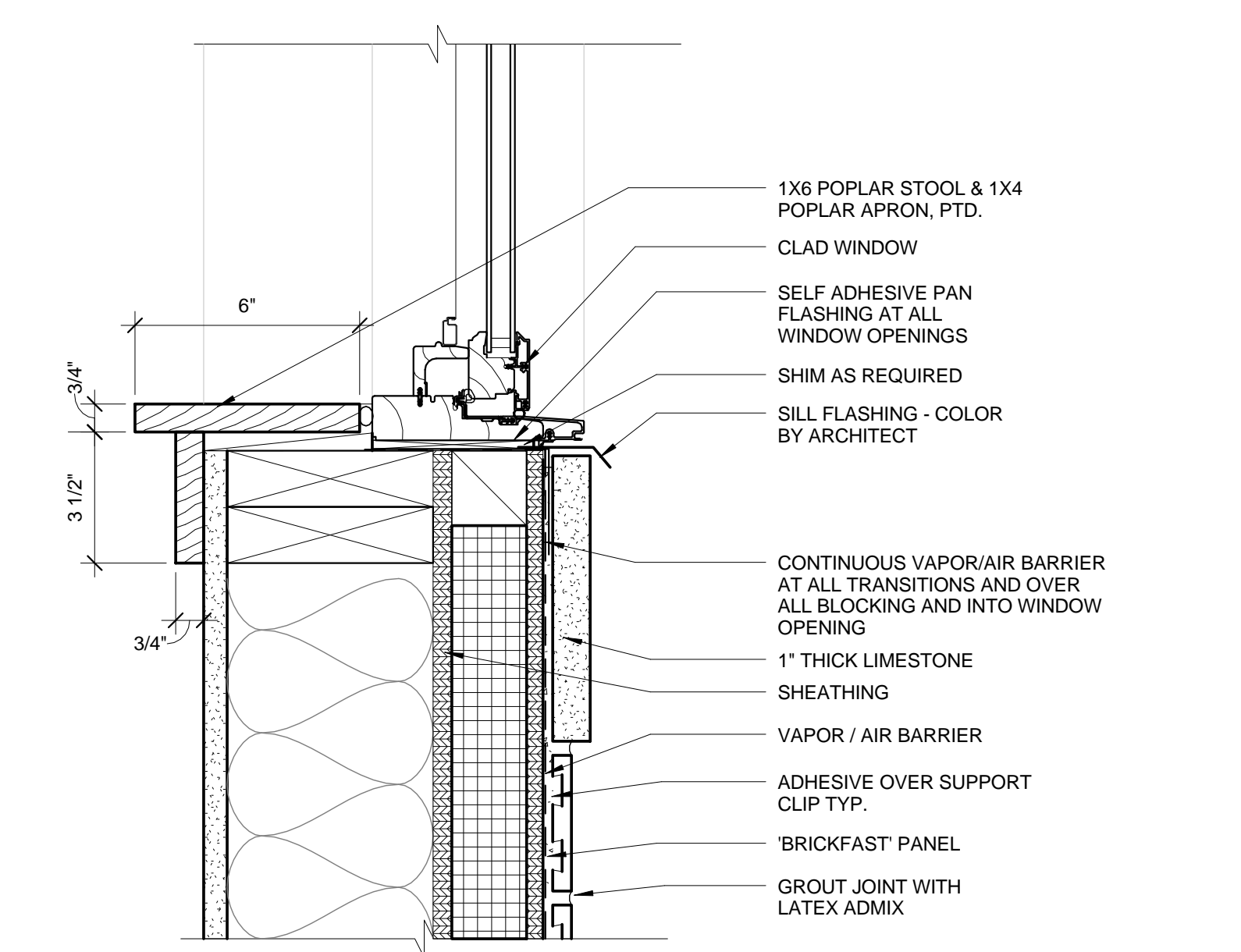
2 TYPICAL WINDOW HEAD DETAIL

3" = 1'-0" 0'-0" 0'-3" 0'-6" 1'-0"



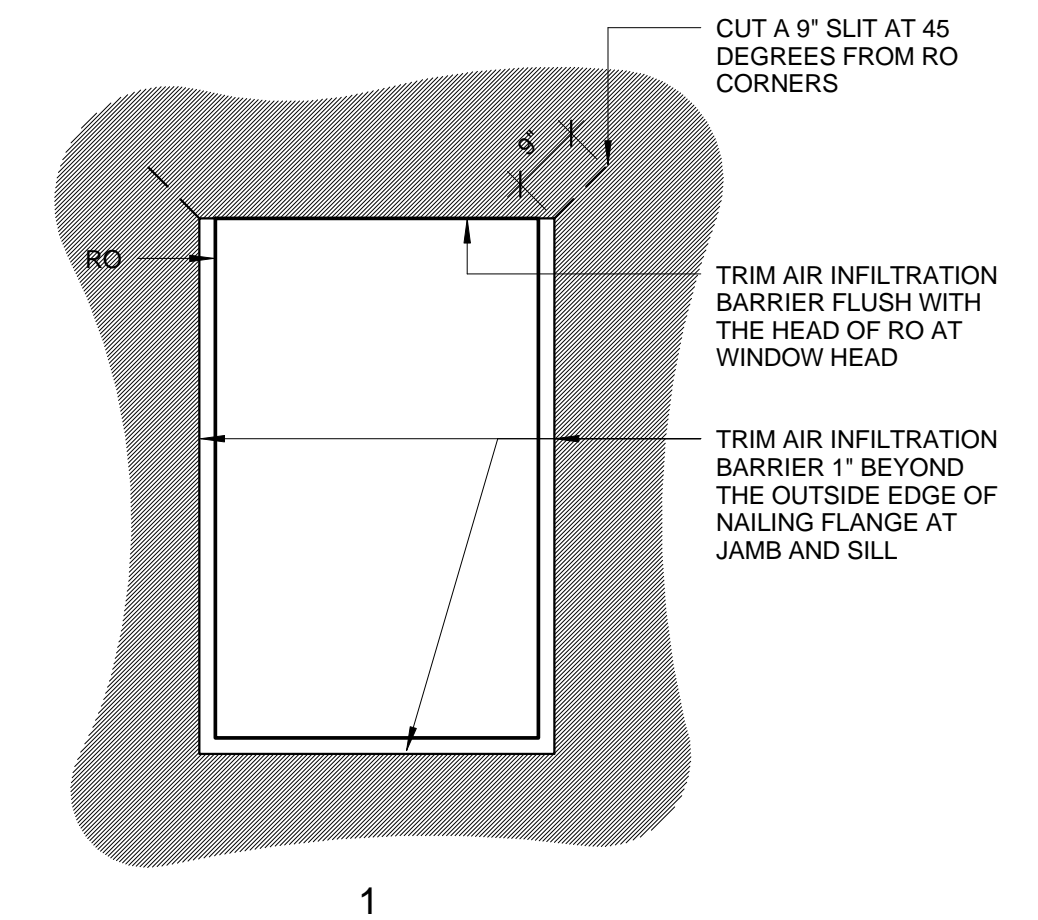
3 TYPICAL WINDOW JAMB DETAIL

3" = 1'-0" 0'-0" 0'-3" 0'-6" 1'-0"

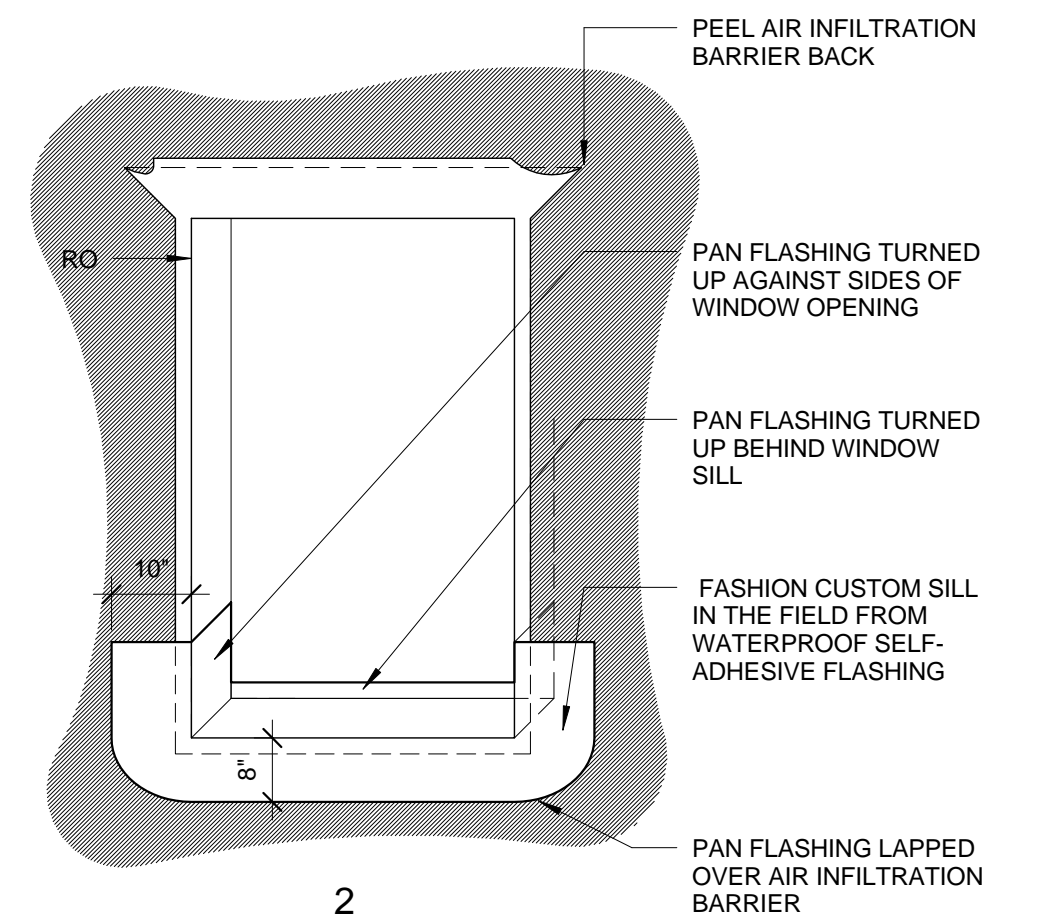


4 TYPICAL WINDOW SILL DETAIL

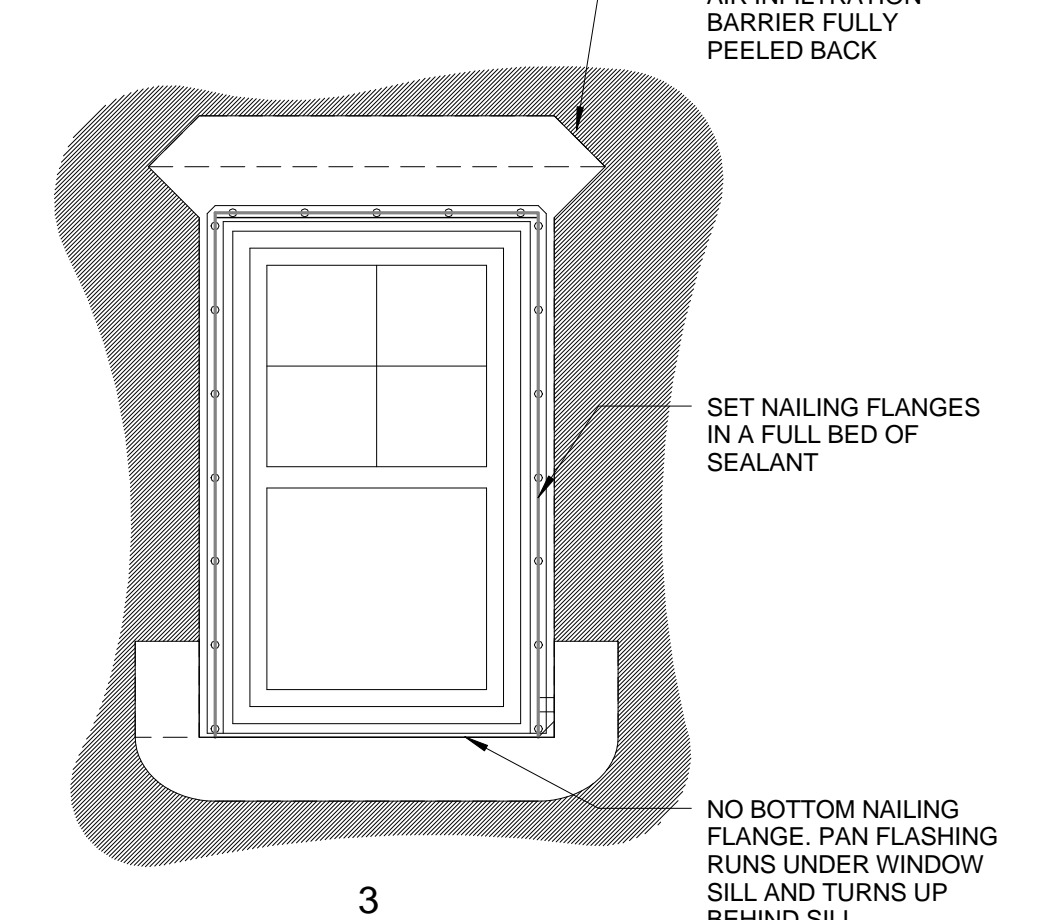
3" = 1'-0" 0'-0" 0'-3" 0'-6" 1'-0"



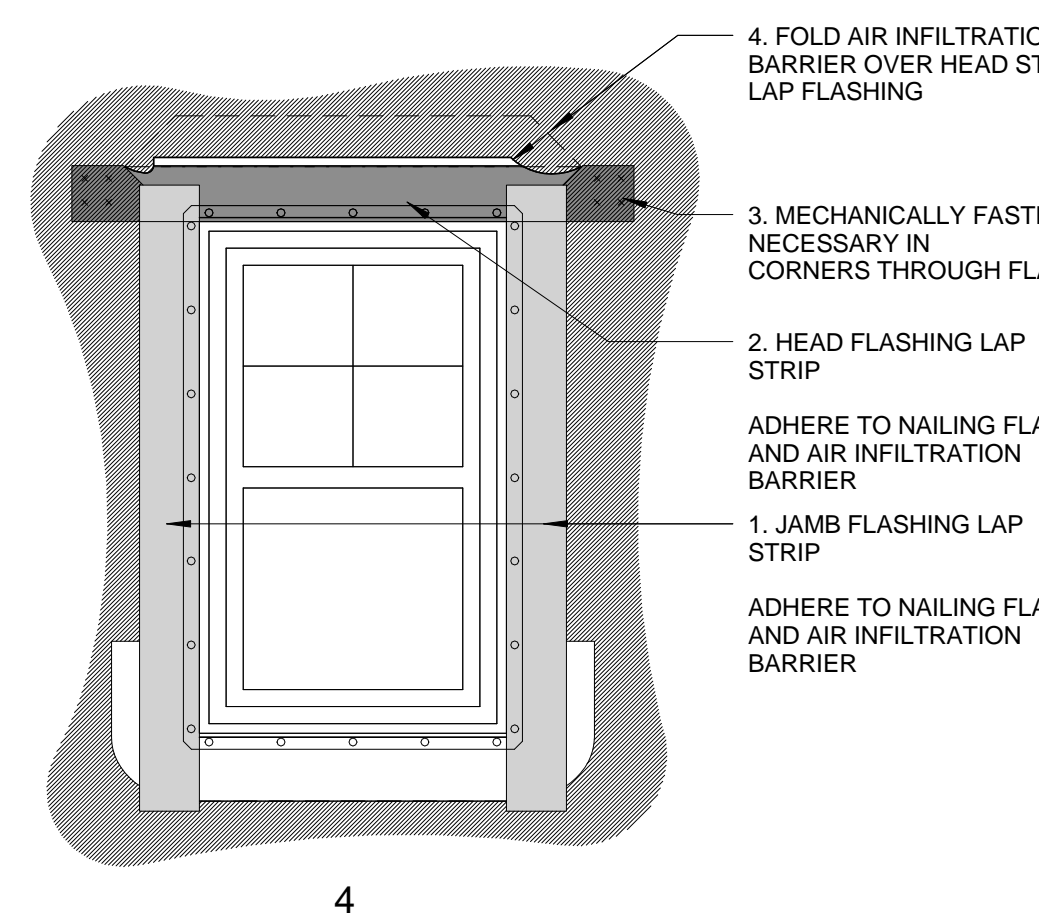
1



2

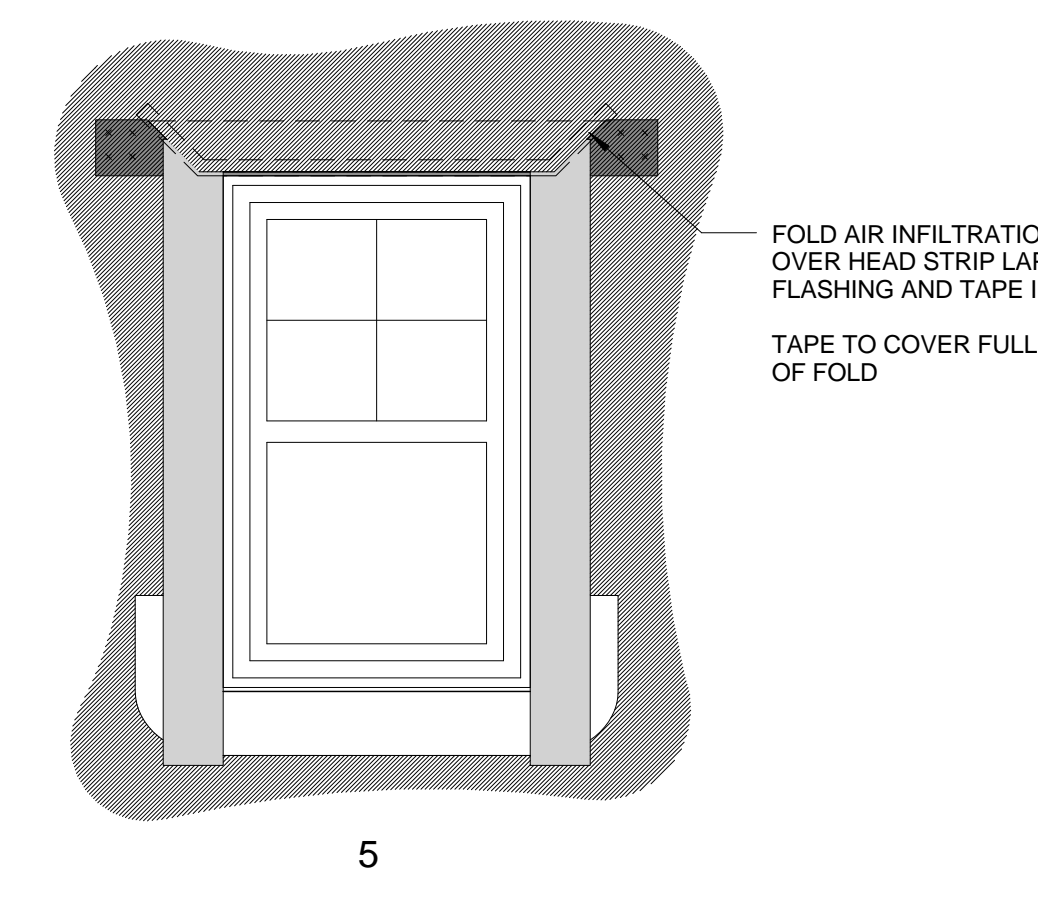


3



4

LAP STRIP HEAD, JAMB AND SILL FLASHING. INSTALL IN ORDER OF NUMBERING



5

ORDER OF INSTALLATION OF WATER PROOFING AT WINDOWS. WATER PROOFING AT STOREFRONT AND DOORS USE STEPS 1-3

PROVIDE A PREFORMED SILL PAN WITH SIDEWALLS FOR ALL STOREFRONT

NOTE: MOCK-UP FIRST WINDOW TO BE APPROVED BY AND ARCHITECT PRIOR TO ANY INSTALLATION

NOTES:
 1. INSTALL AIR INFILTRATION BARRIER IN ORDER AS SHOWN BY NUMBERS.
 2. IF APPLICABLE, LEAVE RELEASE PAPER ON LOWER HALF OF SILL FLASHING UNTIL FUTURE TIE-IN.
 3. INSTALL FLASHING AND AIR INFILTRATION BARRIER TO FORM WATER SHEDDING LAPS
 4. COORDINATE WITH FLASHING REQUIREMENTS OF WINDOW MANUFACTURER
 5. FOLLOW MANUFACTURER'S RECOMMENDATIONS FOR INSTALLATION.

1 ORDER OF INSTALLATION OF WATERPROOFING AT WINDOWS

1/2" = 1'-0" 0'-0" 0'-2" 0'-4" 0'-6" 0'-8" 10'-0"