

Prepared For:
**BATEMAN
PARTNERS, L.L.C.**

Consultant:

Architect:
**ARCHETYPE
a r c h i t e c t s**
48 Union Wharf Portland, Maine 04101
(207) 772-6022 Fax (207) 772-4056

Project:

185 Fore Street

185 Fore Street, Portland Maine

Revisions:

1	05-22-2014	BID SET
2	06-12-2015	ADDENDUM 1

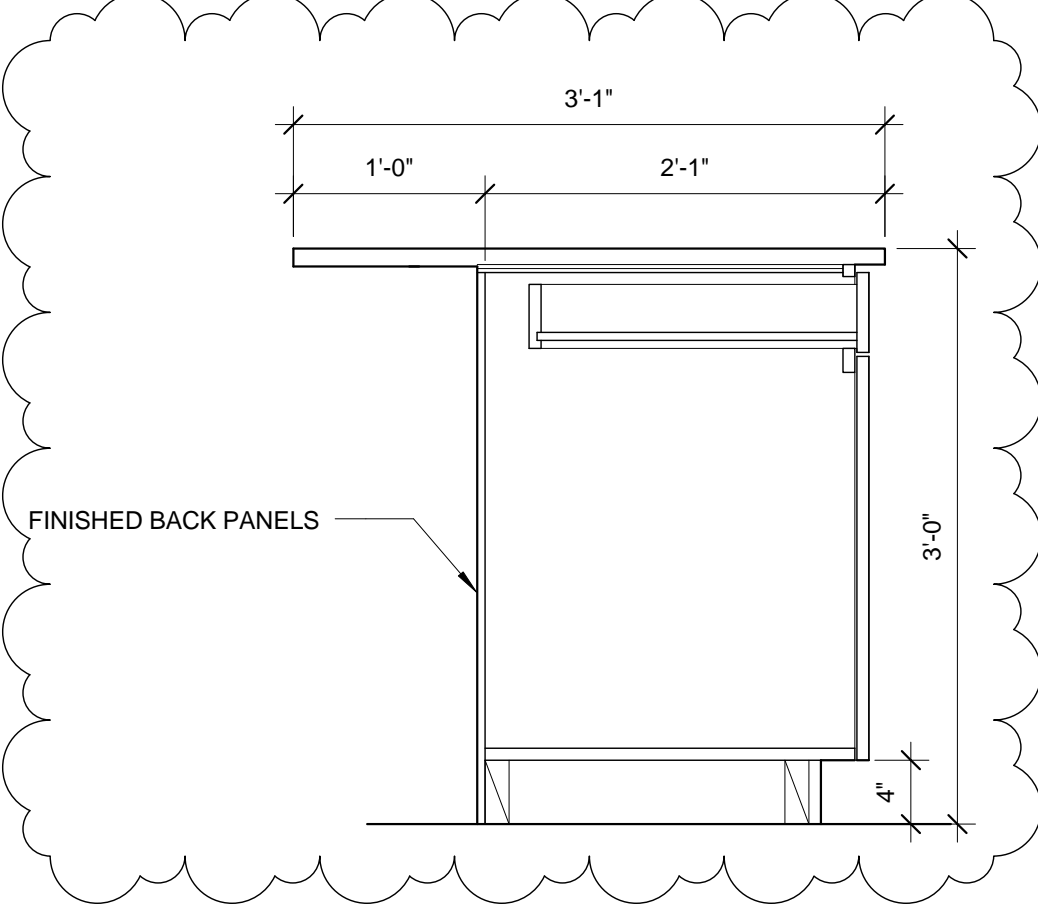
Date:
12 JUNE, 2015

Scale:

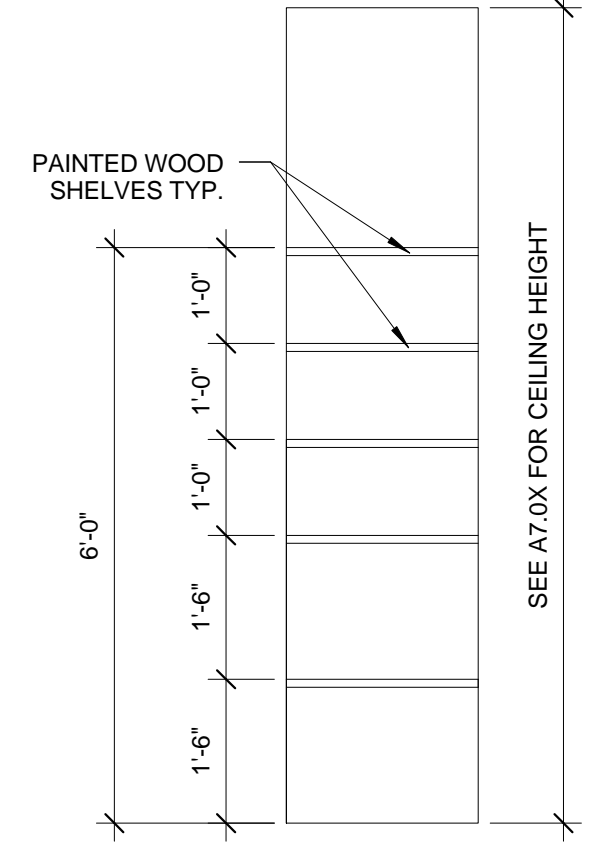
As indicated

INTERIOR DETAILS

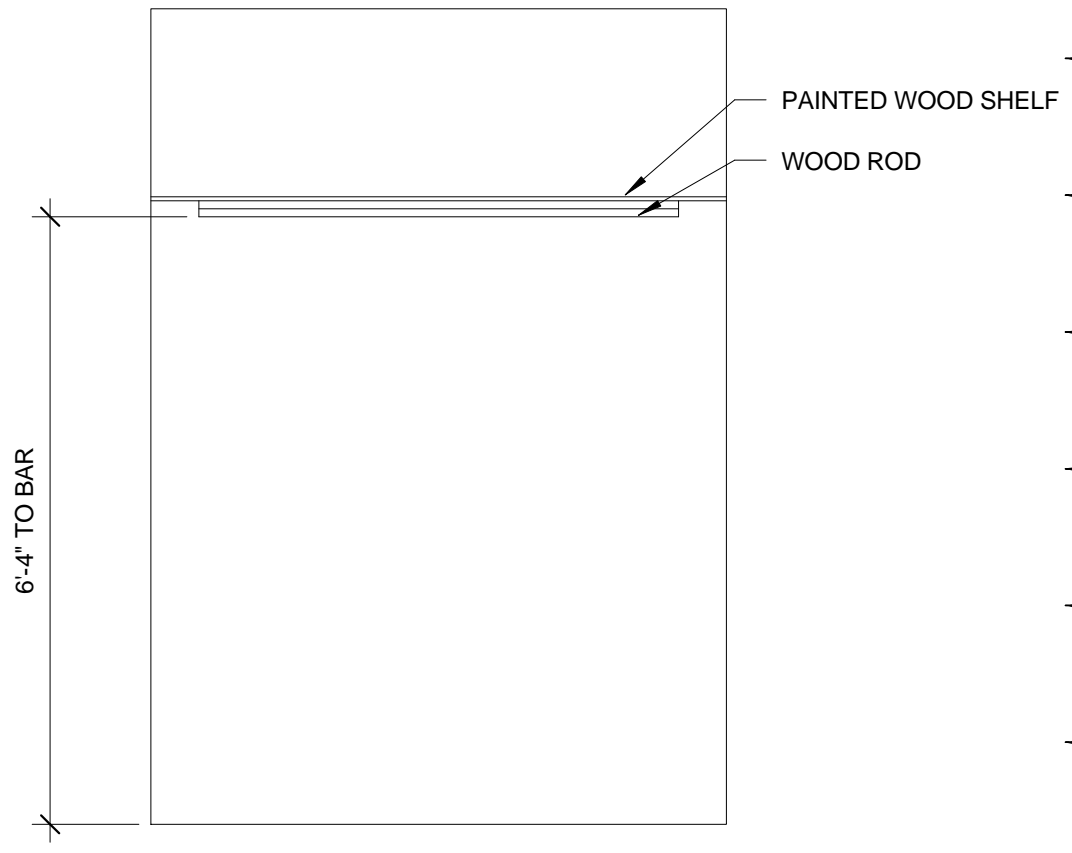
A4.06



1 | TYPICAL KITCHEN CABINET DETAIL
1" = 1'-0" 0 0'-3" 0'-6" 1'-0" 2'-0"



2 | CLOSET ELEV. WITH SHELVING
1/2" = 1'-0" 0 2'-0" 4'-0" 8'-0" 16'-0"



3 | CLOSET ELEV. WITH HANGING SHELF AND ROD
1/2" = 1'-0" 0 2'-0" 4'-0" 8'-0" 16'-0"