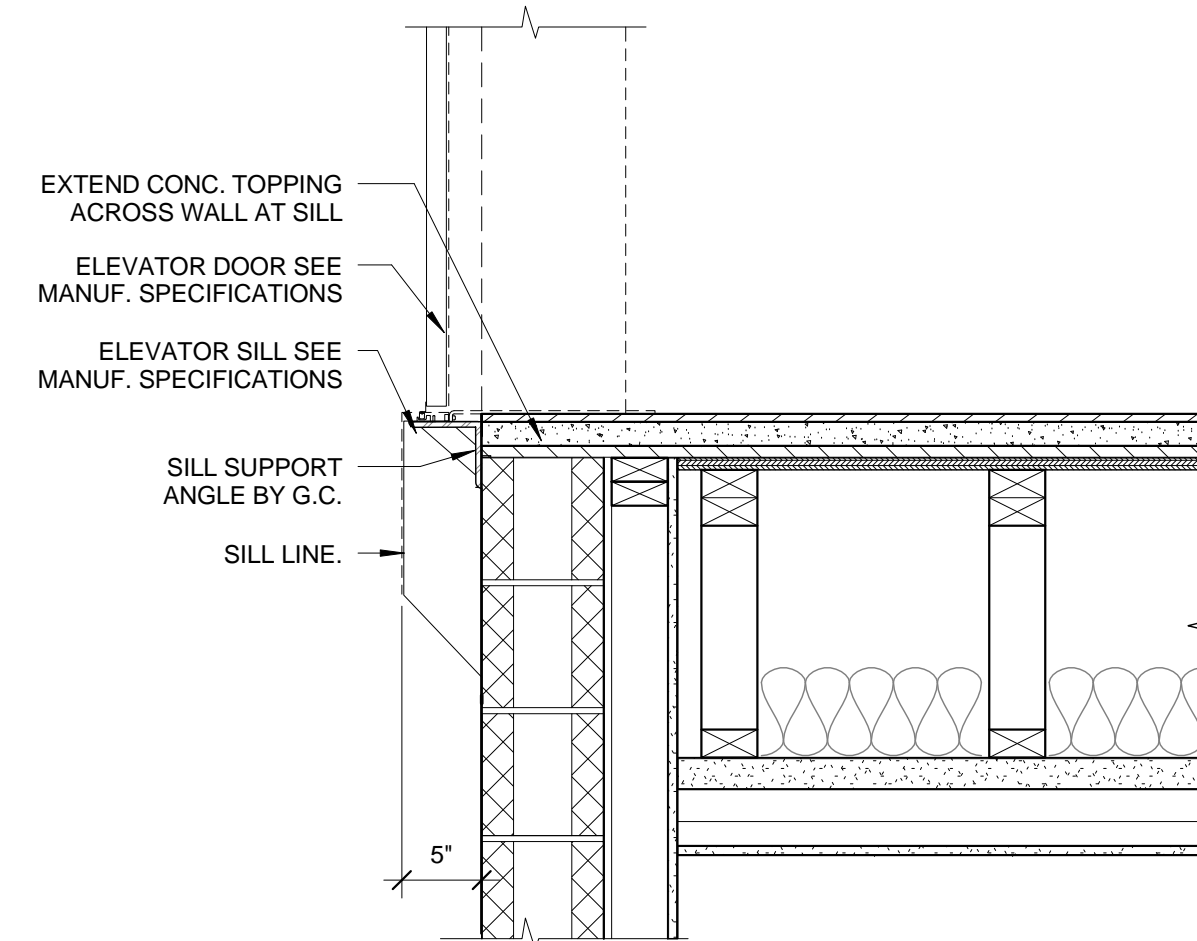


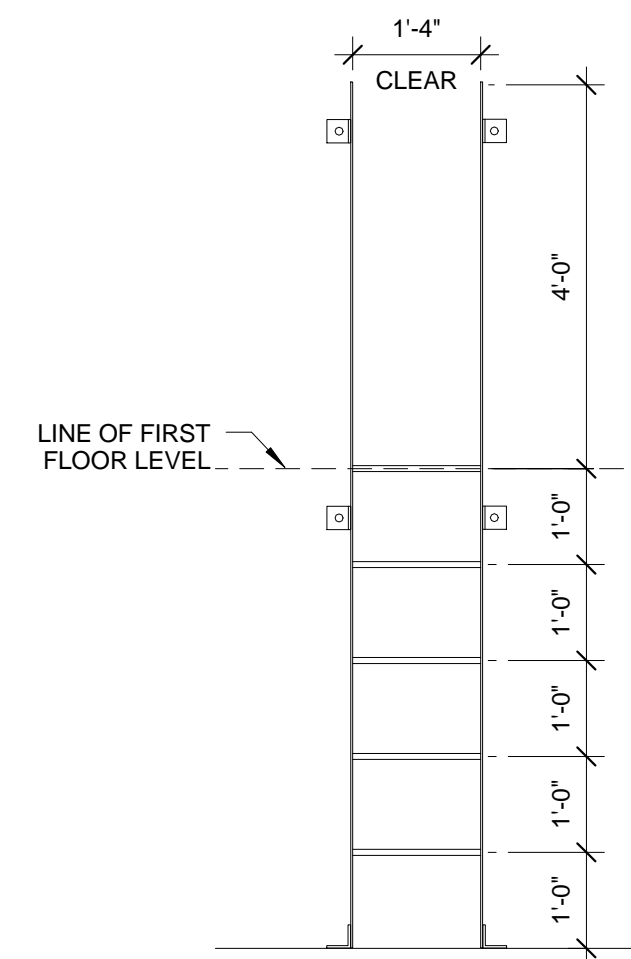
8 | ELEVATOR DOOR THRESHOLD AT CONCRETE

1" = 1'-0"
0 1'-0" 2'-0" 4'-0" 8'-0"



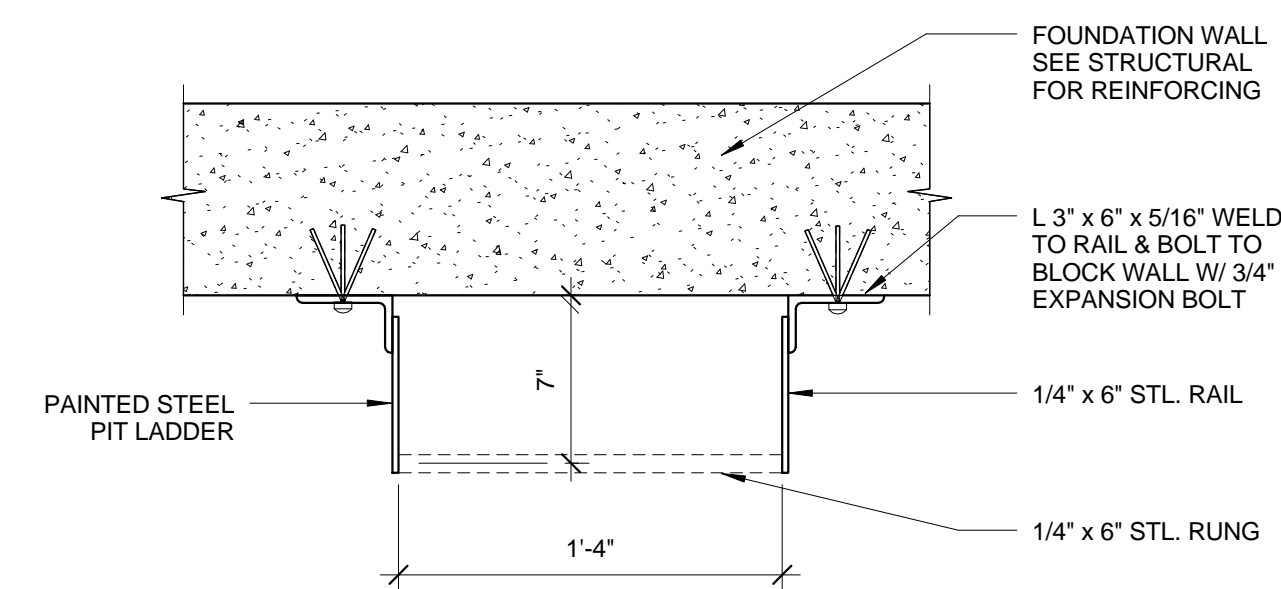
7 | ELEVATOR DOOR THRESHOLD AT FLOOR

1" = 1'-0"
0 1'-0" 2'-0" 4'-0" 8'-0"



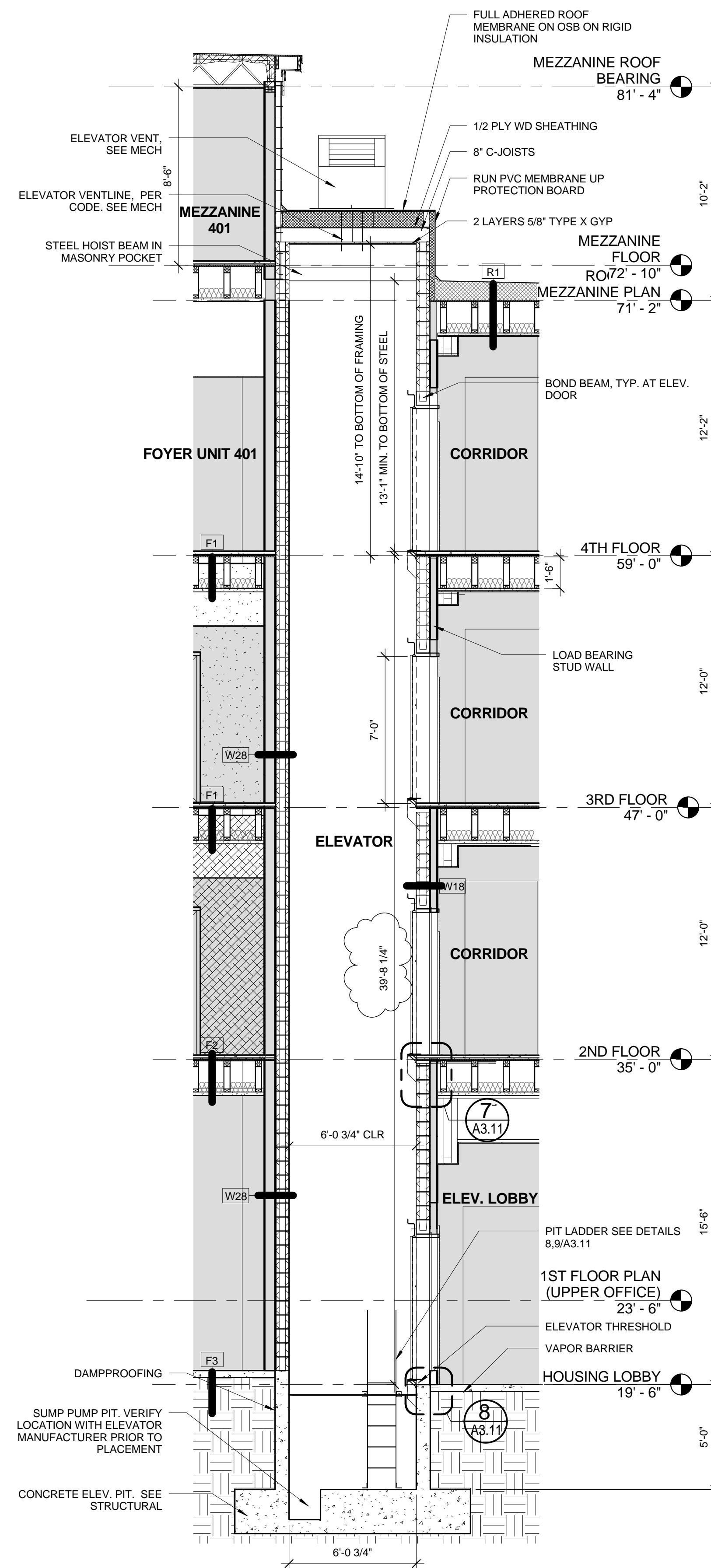
6 | ELEVATOR PIT LADDER - ELEVATION

1/2" = 1'-0"
0 2'-0" 4'-0" 8'-0" 16'-0"



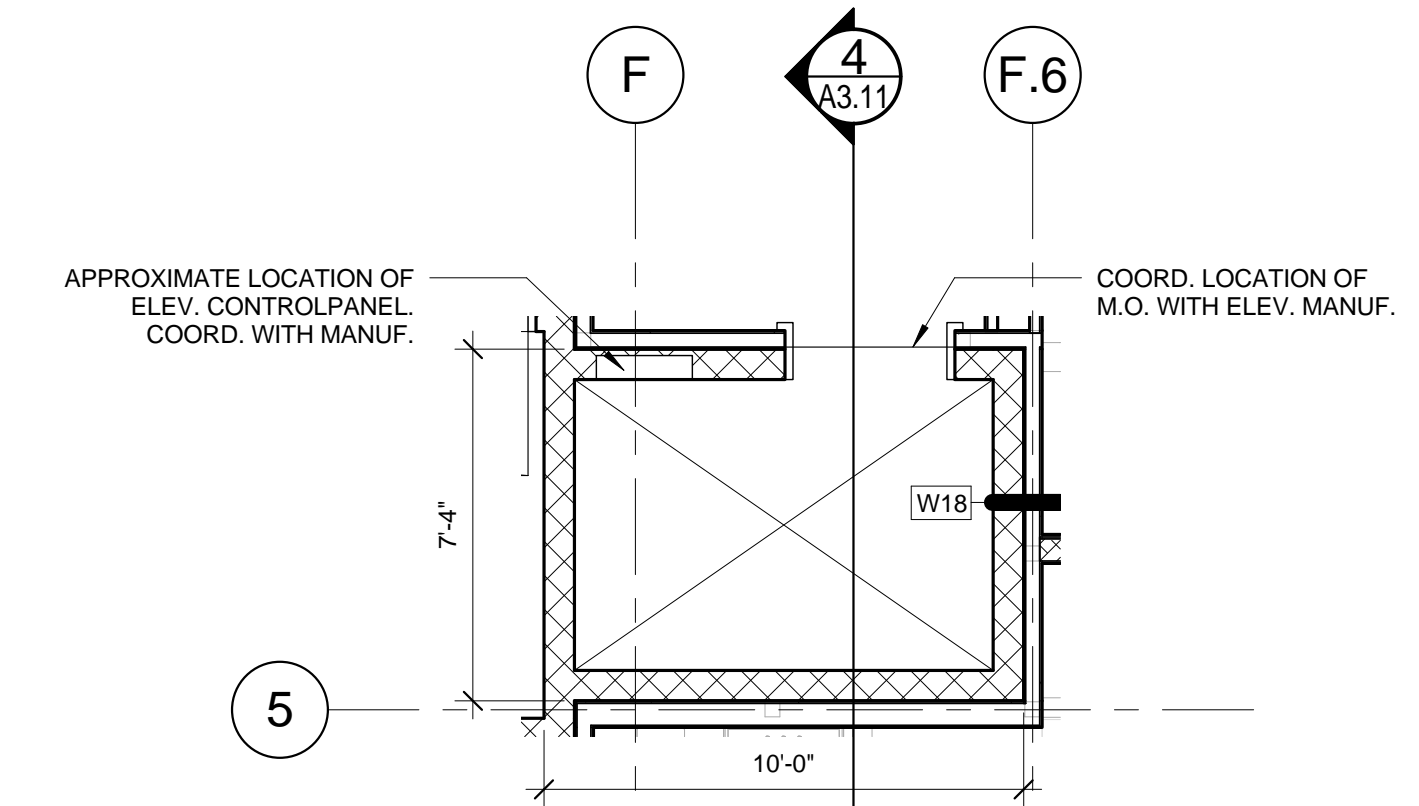
5 | ELEVATOR PIT LADDER - PLAN

1 1/2" = 1'-0"
0 0-3 0-6 1-0 2-0



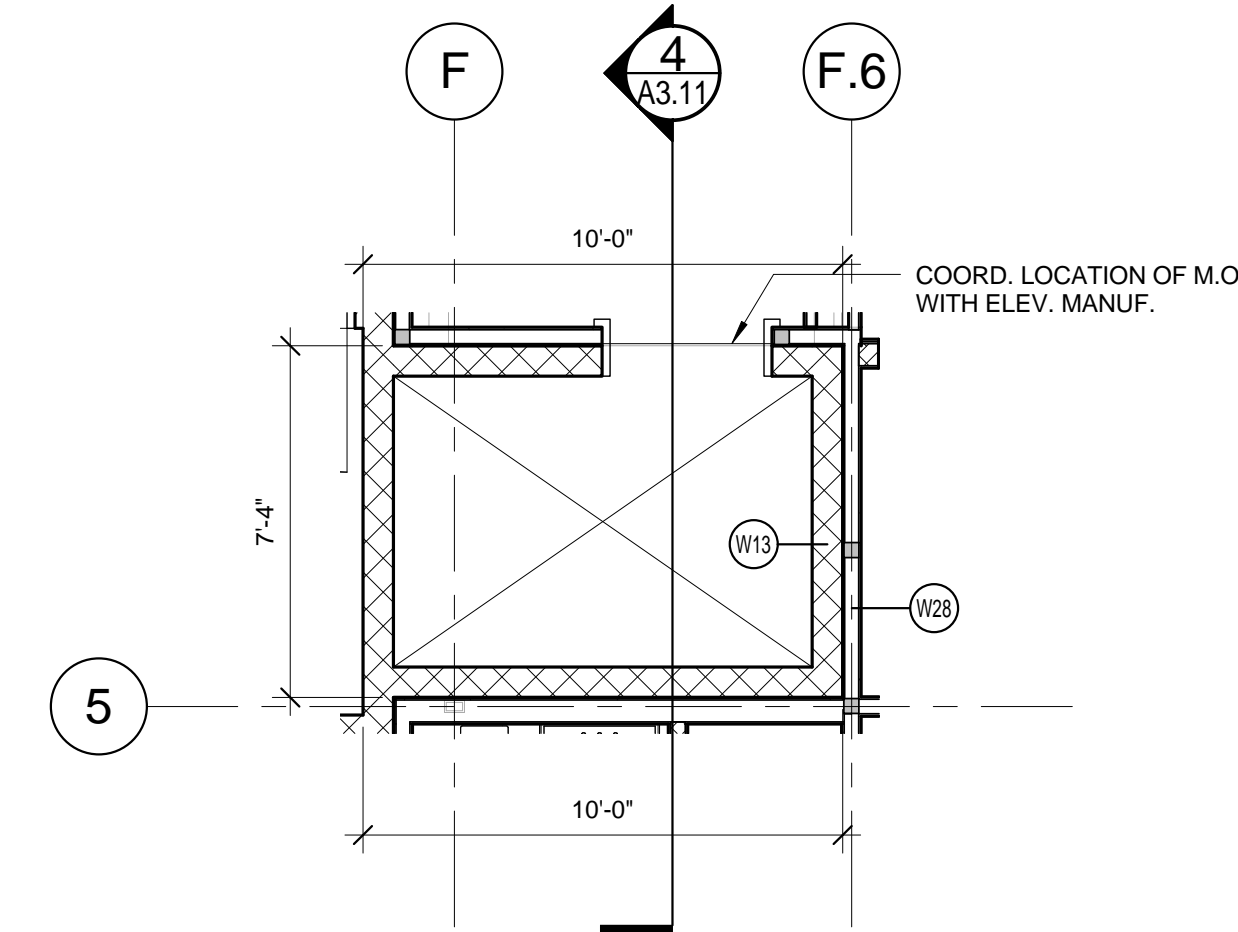
4 | ELEVATOR SECTION

1/4" = 1'-0"
0 1'-0" 2'-0" 4'-0" 8'-0"



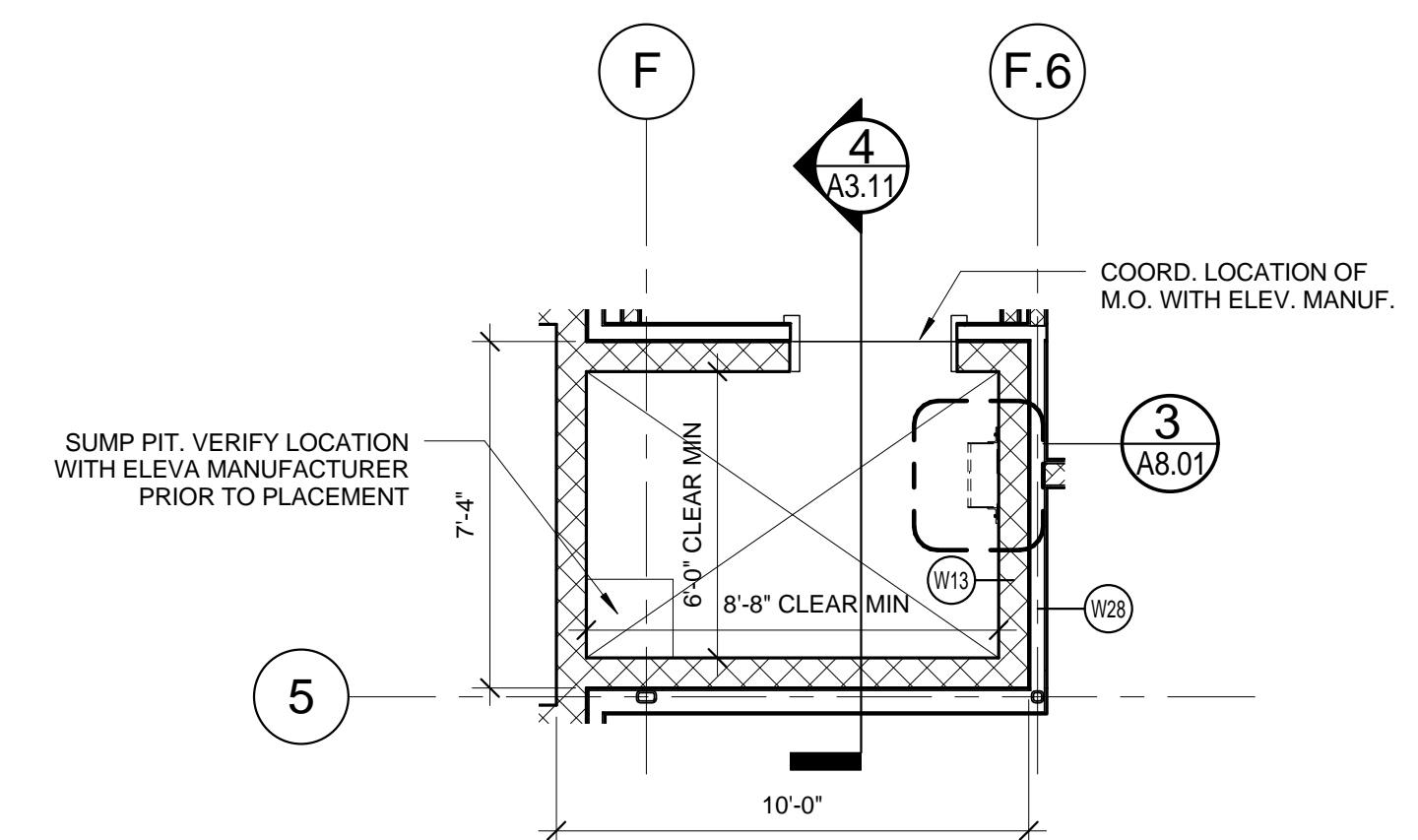
3 | ELEVATOR PLAN 4TH FLOOR

1/4" = 1'-0"
0 1'-0" 2'-0" 4'-0" 8'-0"



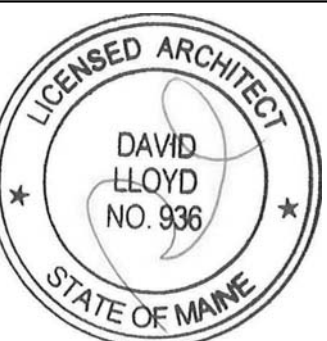
2 | ELEVATOR PLAN 2ND AND 3RD FLOOR

1/4" = 1'-0"
0 1'-0" 2'-0" 4'-0" 8'-0"



1 | ELEVATOR PLAN 1ST FLOOR

1/4" = 1'-0"
0 1'-0" 2'-0" 4'-0" 8'-0"



Prepared For:
BATEMAN PARTNERS, LLC.
470 FORE STREET
PORTLAND, ME 04101

Consultant:
ARCHETYPE architects
48 Union Wharf Portland, Maine 04101
(207) 772-6022 Fax (207) 772-4056

Project:
185 Fore Street
185 Fore Street, Portland Maine

Revisions:
1 05-22-2014 BID SET
2 06-12-2015 ADDENDUM 1

Date: 12 JUNE, 2015
Scale: As indicated
ELEVATOR PLANS AND SECTION

A3.11