

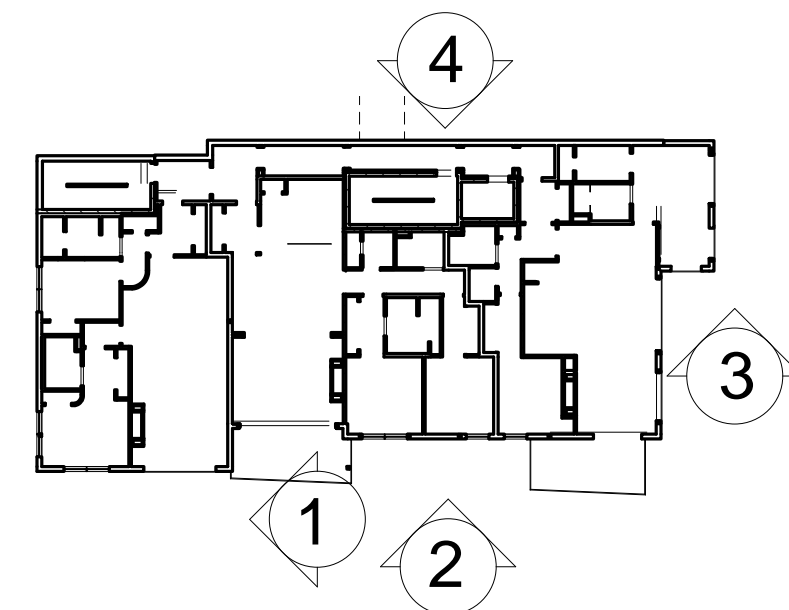
1 RECESSED ELEV.

1/8" = 1'-0" 0 2'-0" 4'-0" 8'-0" 16'-0"

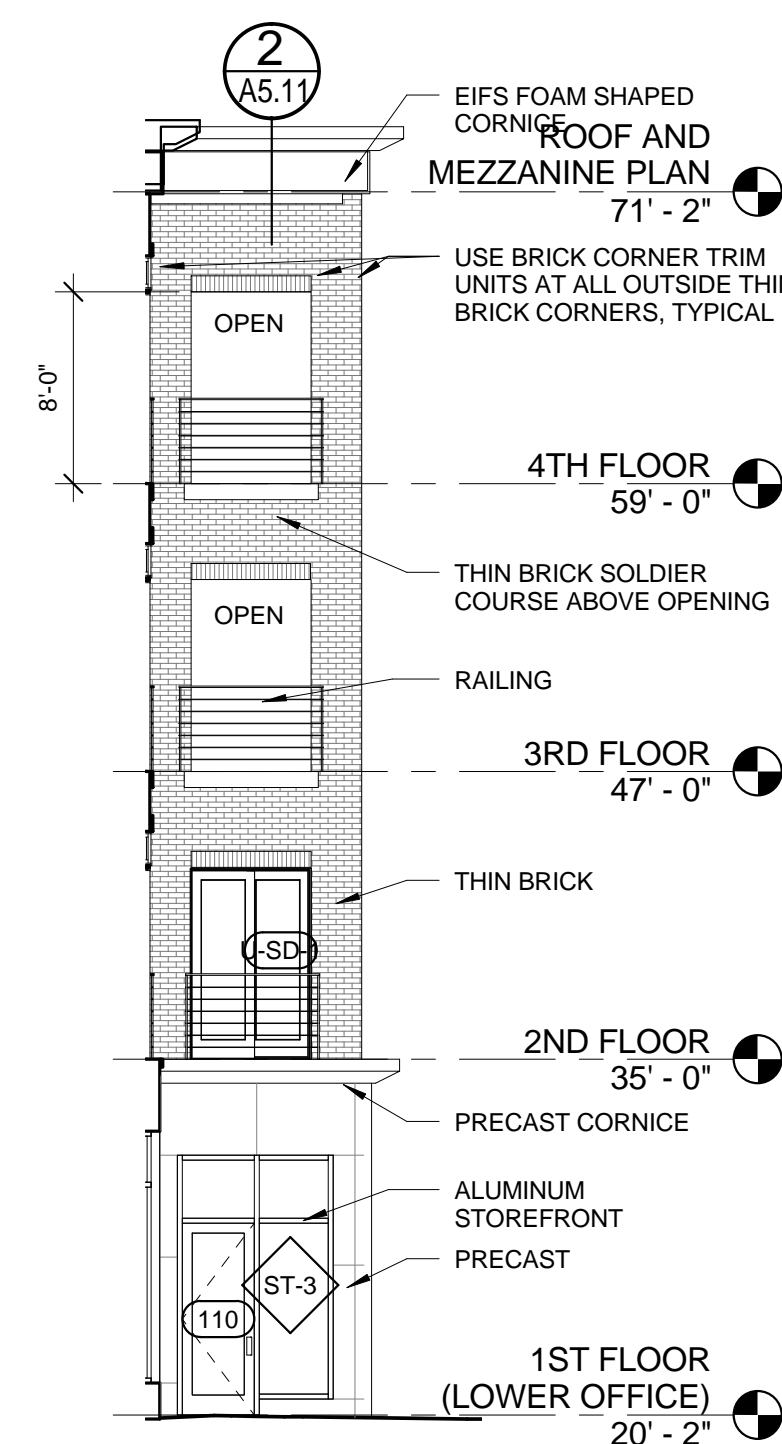


2 SOUTH ELEVATION

1/8" = 1'-0" 0 2'-0" 4'-0" 8'-0" 16'-0"

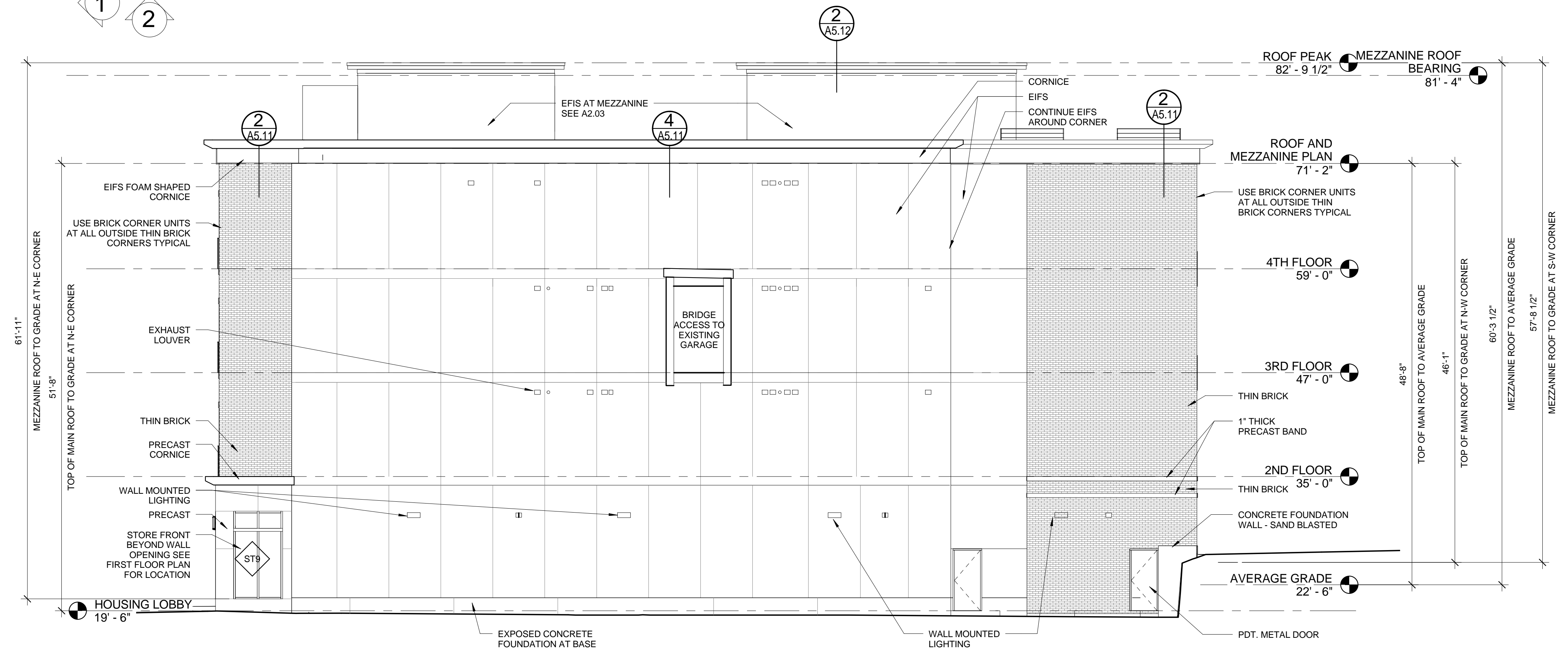


GENERAL NOTES:
 1. AVERAGE GRADE BY DEFINITION: 4 CORNER AVERAGE GRADE - SW 25.10' + SE 20.45' + SW 25.00' + 19.48' = 90.0' / 4 = 22'-6" (AVERAGE GRADE)
 2. BUILDING HEIGHT: THE VERTICAL MEASUREMENT AT THE FOUR CORNERS FROM GRADE TO HIGHEST POINT OF MEZZANINE ROOF BEAM - SW 57'-7 1/2" + SE 62'-4 3/4" + NW 57'-9 1/2" + NE 63'-4" = 241'-2 1/4" = 60'-3 1/2" (BUILDING HEIGHT)



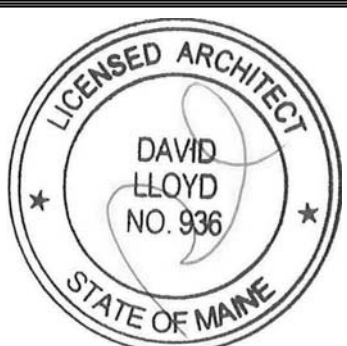
3 RECESSED ELEV.

1/8" = 1'-0" 0 2'-0" 4'-0" 8'-0" 16'-0"



4 NORTH ELEVATION

1/8" = 1'-0" 0 2'-0" 4'-0" 8'-0" 16'-0"



Prepared For:
BATEMAN PARTNERS, LLC.
 470 FORE STREET
 PORTLAND, ME 04101

Consultant:
ARCHETYPE architects
 48 Union Wharf Portland, Maine 04101
 (207) 772-6022 Fax (207) 772-4056

Project:
 185 Fore Street
 185 Fore Street, Portland Maine

Revisions:
 1 05-22-2014 BID SET

Date: 12 JUNE, 2015
 Scale: As indicated
BUILDING ELEVATIONS

A2.01