

Prepared For:  
**BATEMAN PARTNERS, LLC.**  
 470 FORE STREET  
 PORTLAND, ME 04101

Consultant:  
**ARCHETYPE architects**  
 48 Union Wharf Portland, Maine 04101  
 (207) 772-6022 Fax (207) 772-4056

Architect:  
**185 Fore Street**  
 185 Fore Street, Portland Maine

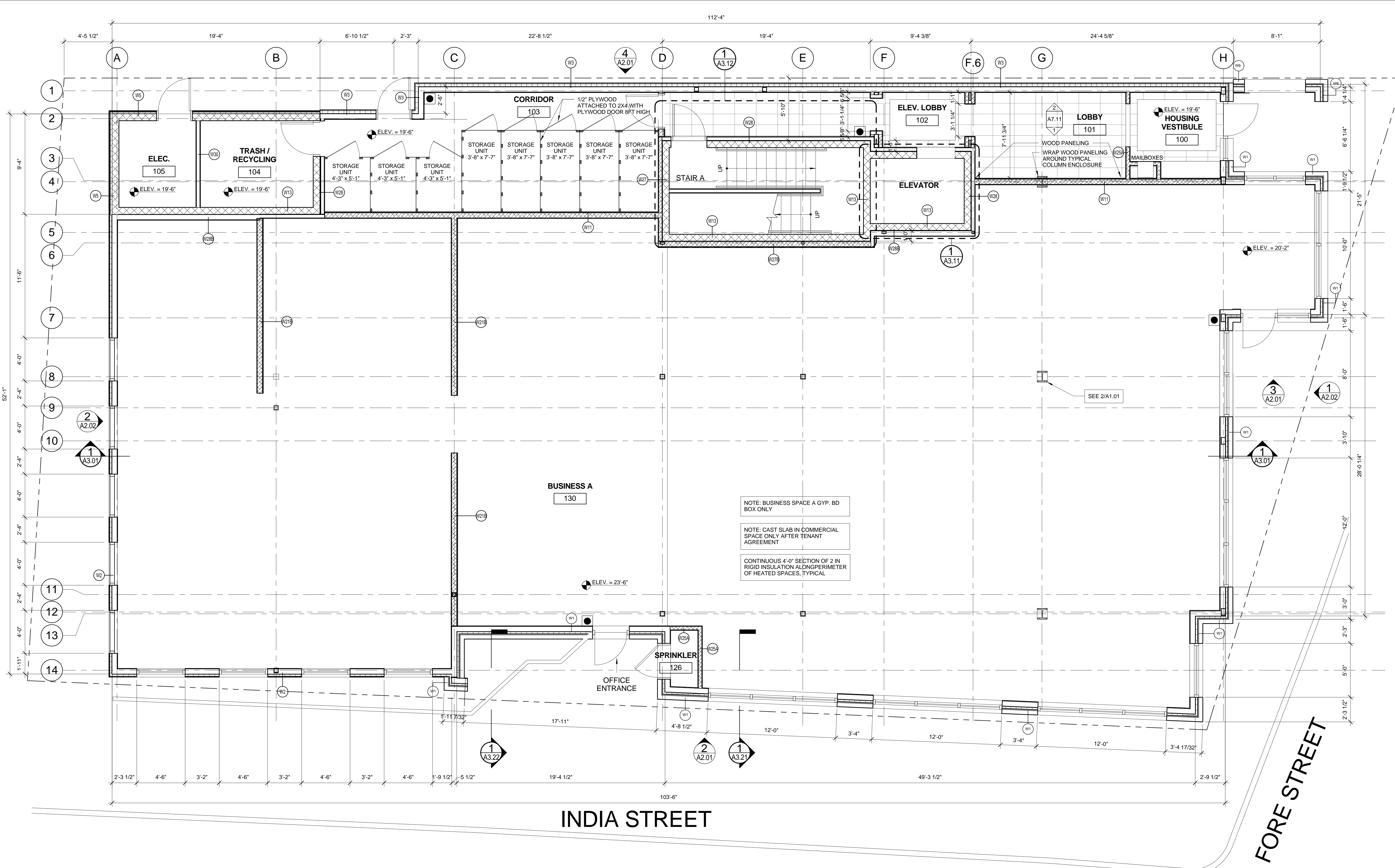
Project:  
 185 Fore Street

Revisions:  
 1 05-22-2014 BID SET  
 2 06-12-2015 ADDENDUM 1

Date:  
 12 JUNE, 2015

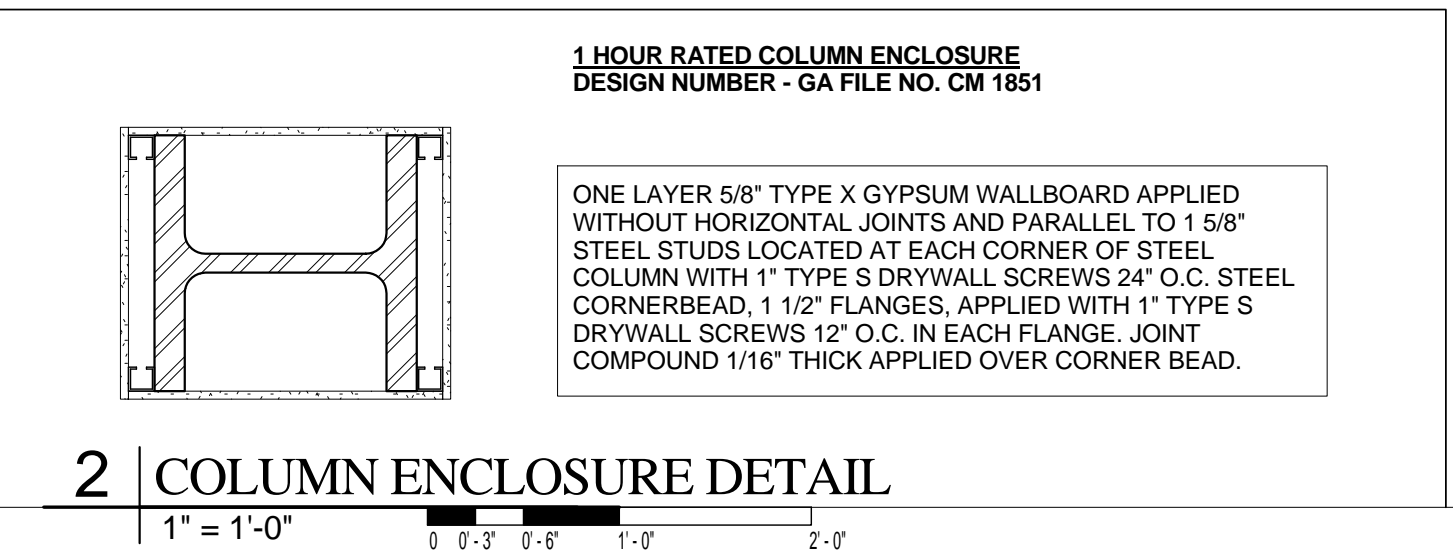
Scale:  
 As indicated

**FIRST FLOOR PLAN**



**INDIA STREET**

**FORE STREET**



**GROSS SQUARE FOOTAGE**

FIRST FLOOR - 5,905 SQ. FT.
SECOND FLOOR - 5,451 SQ. FT.
THIRD FLOOR - 5,475 SQ. FT.
FOURTH FLOOR - 5,258 SQ. FT.
MEZZANINE - 1,187 SQ. FT.
<b>TOTAL - 23,279 SQ. FT.</b>

**COMMERCIAL SQUARE FOOTAGE**

**4,486 SF**

MEASUREMENTS PER BOMA FLOOR RENTABLE AREA

- TO COMM. SPACE SIDE OF SHEETROCK
- CENTER LINE OF GLAZING

**UNIT SQUARE FOOTAGE**

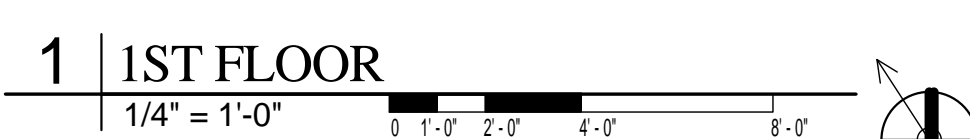
<b>UNIT 201</b> - 1,587 GSF	<b>UNIT 301</b> - 1,522 GSF	<b>UNIT 401</b> - 2,702 GSF
<b>UNIT 202</b> - 1,603 GSF	<b>UNIT 302</b> - 1,606 GSF	<b>UNIT 402</b> - 2,801 GSF
<b>UNIT 203</b> - 1,381 GSF	<b>UNIT 303</b> - 1,381 GSF	

**MEZZANINE 401** - 569 GSF  
 244 GSF (EXCL. OPEN TO BELOW AREA)

**MEZZANINE 402** - 583 GSF  
 278 GSF (EXCL. OPEN TO BELOW AREA)

**NOTE: UNIT SQUARE FOOTAGE MEASUREMENTS TAKEN:**

TO CORRIDOR SIDE SHEETROCK TO STAIR AND ELEVATOR SHAFT SIDE OF CMU TO CENTER OF WALL BETWEEN UNITS TO OUTSIDE OF EXTERIOR WALL



**A1.01**