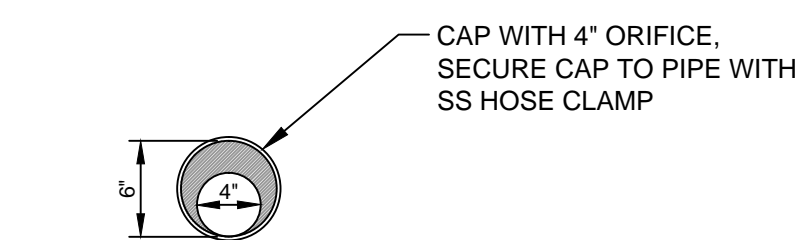


**PRECAST CONCRETE MANHOLE**

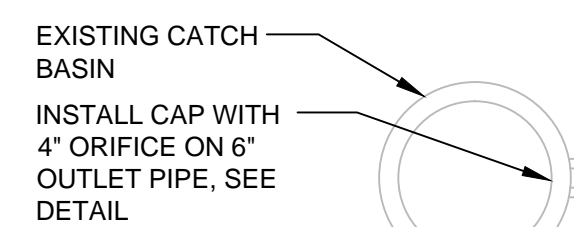
**A PRECAST CONCRETE MANHOLE**

N.T.S. AS OBTAINED FROM THE CITY OF PORTLAND "TECHNICAL MANUAL"

- NOTES:**
- THE EXISTING SUBSURFACE CHAMBER SYSTEM IS SHOWN PER STORMTECH DESIGN FOR OCEAN GATEWAY PARKING GARAGE, DATED 6/14/2007.
  - CONTRACTOR TO REPORT ANY DISCREPANCY WITH EXISTING SYSTEM TO ENGINEER TO ALLOW ANY REQUIRED REVISIONS TO THE PROPOSED SYSTEM EXPANSION.



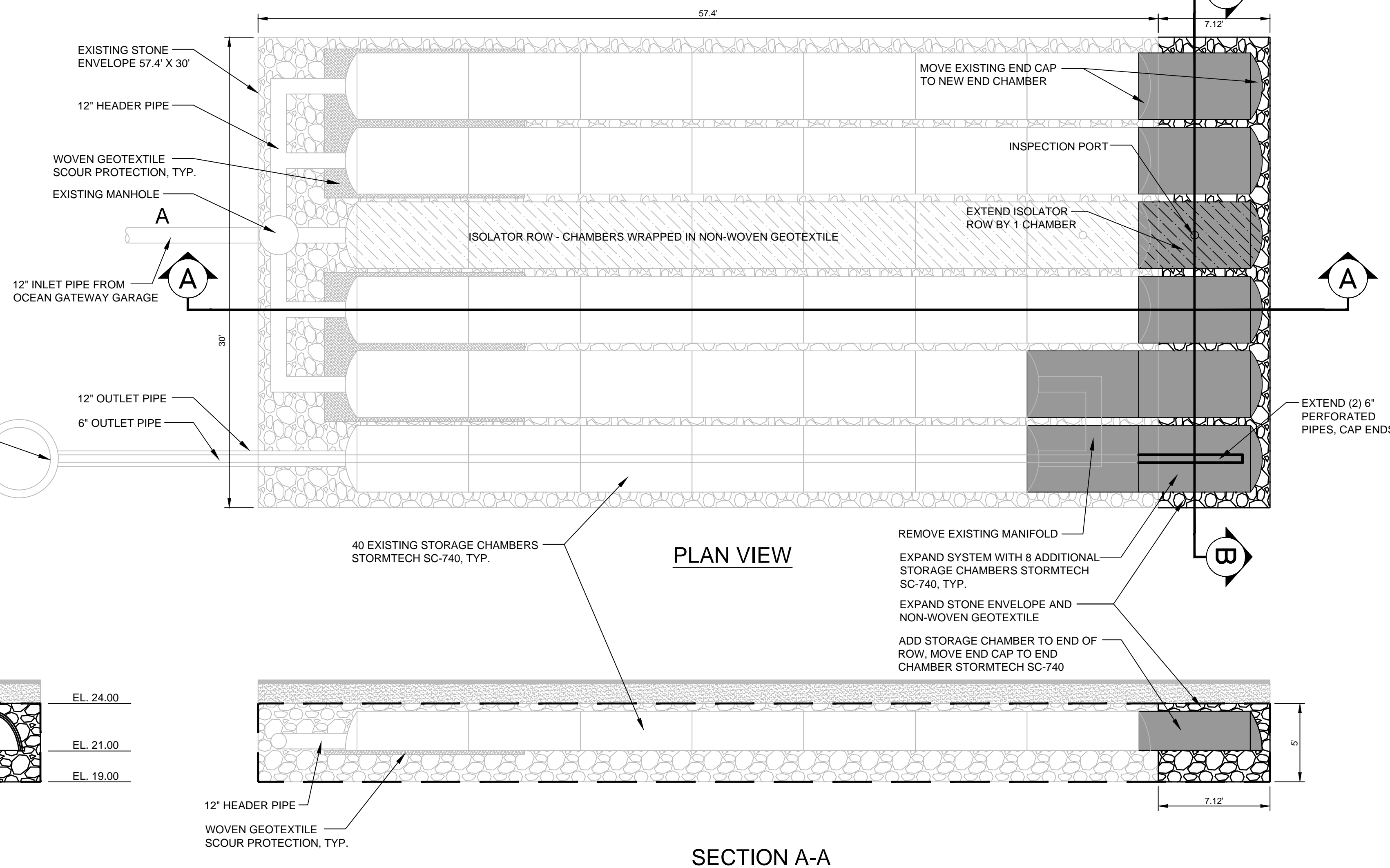
**PIPE OUTLET ORIFICE DETAIL**



**SECTION B-B**

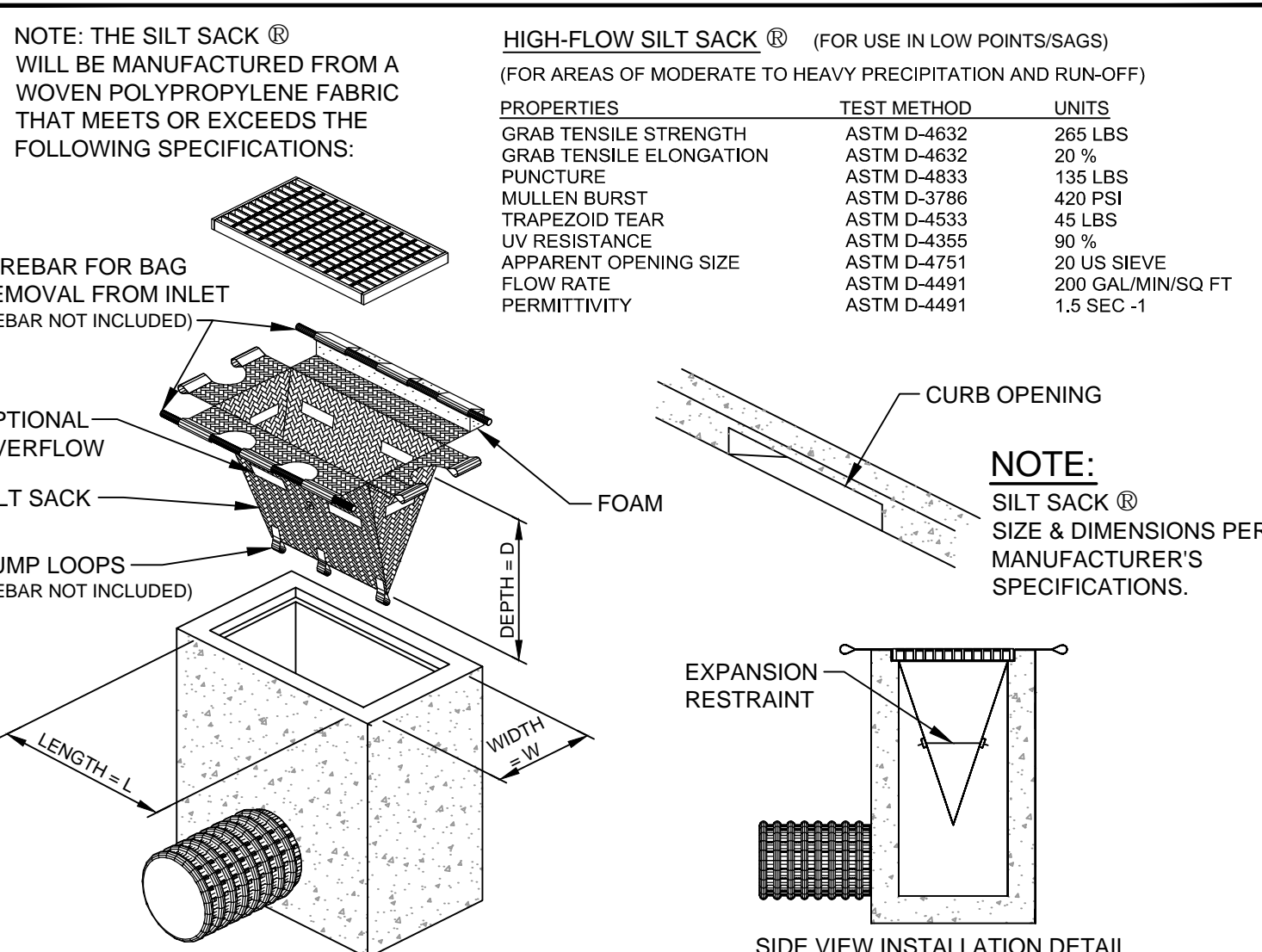
**C SUBSURFACE CHAMBER SYSTEM EXPANSION DETAIL**

N.T.S.



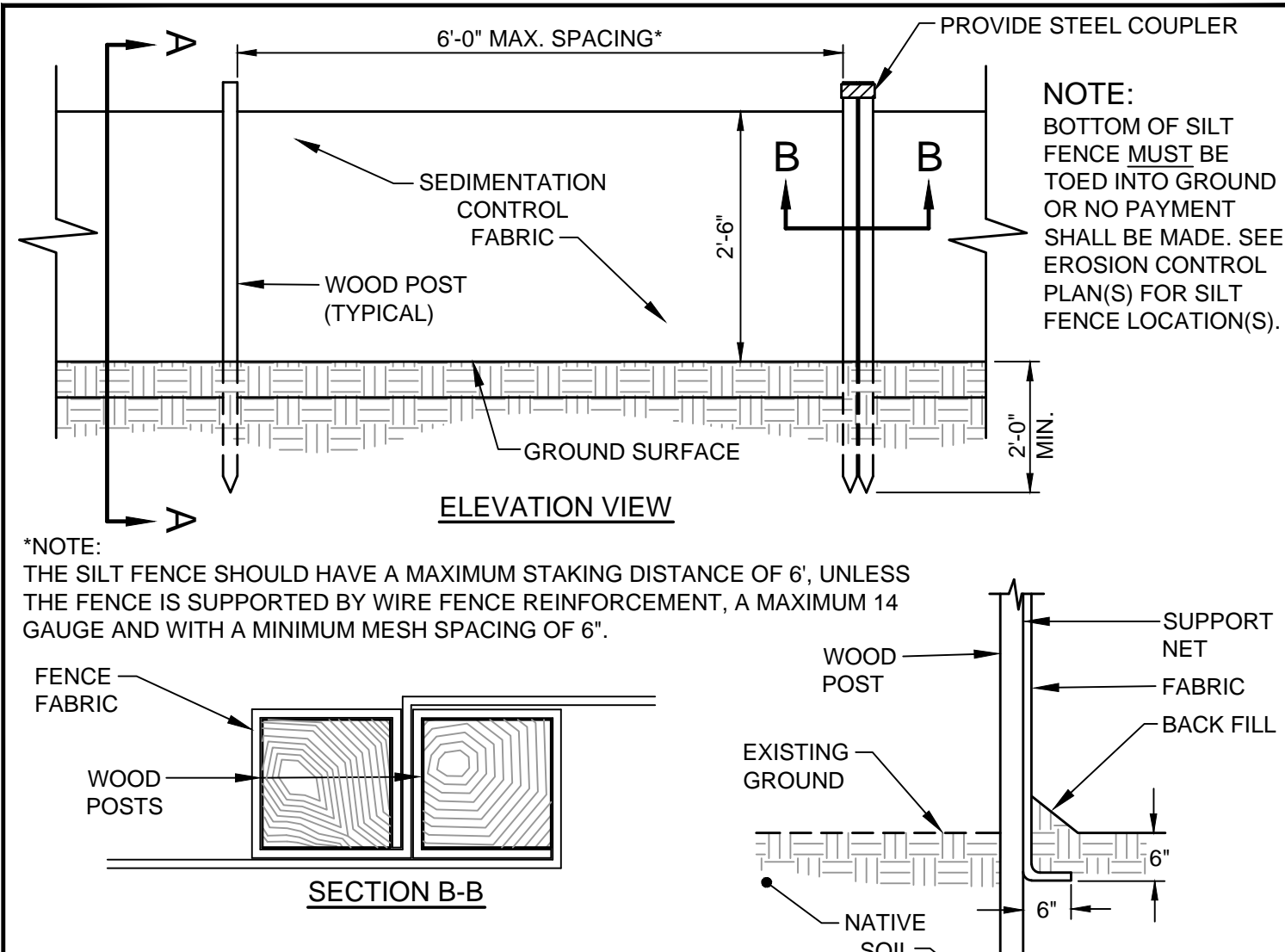
**PLAN VIEW**

**SECTION A-A**



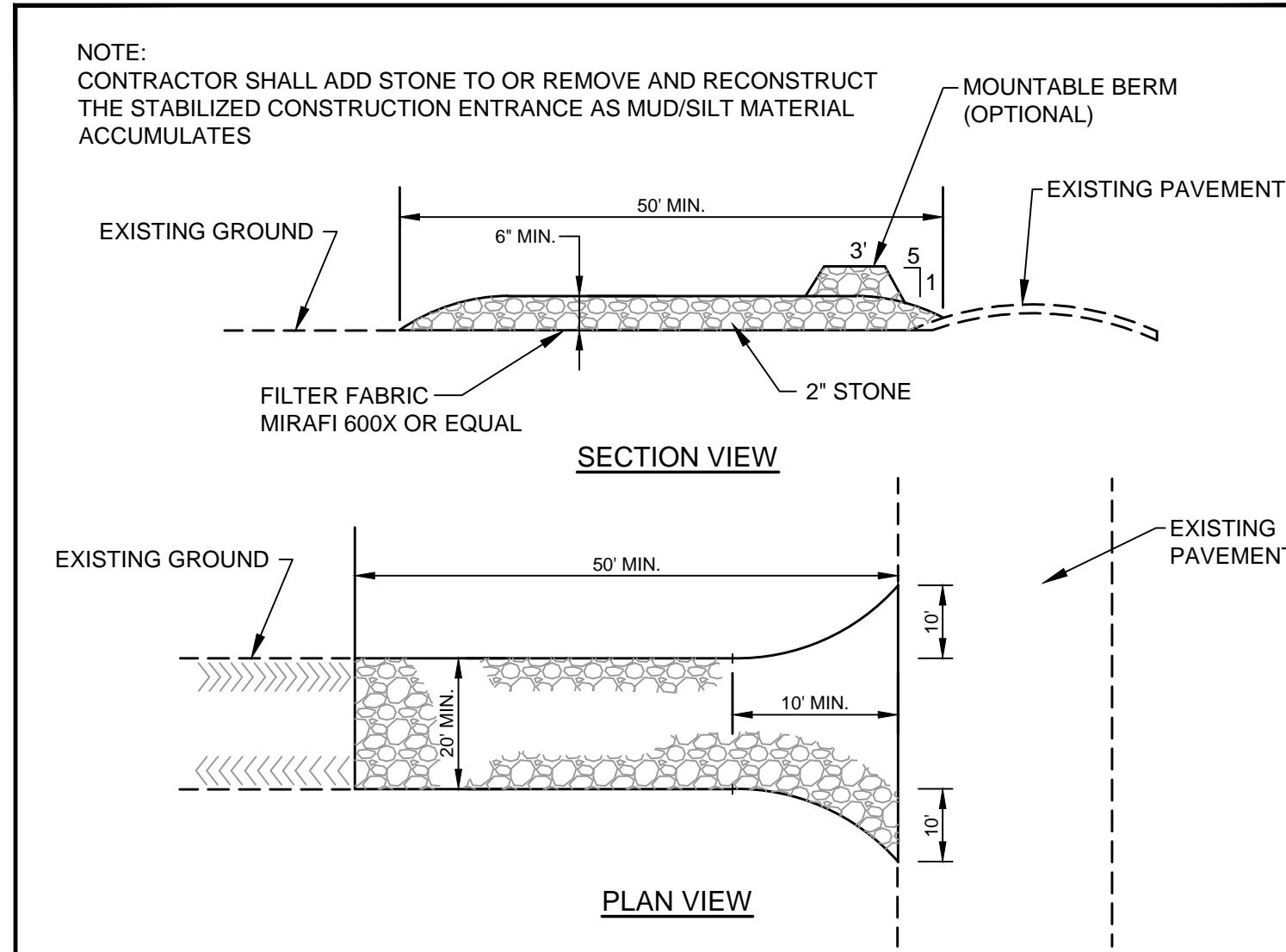
**B SILT SACK DETAIL & SPECIFICATIONS**

N.T.S.



**D SILTATION FENCE DETAIL**

N.T.S.

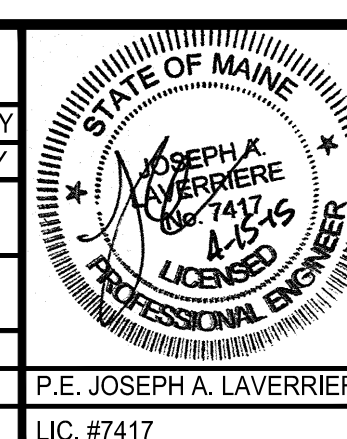


**E STABILIZED CONSTRUCTION ENTRANCE DETAIL**

N.T.S.

**PRELIMINARY - NOT FOR CONSTRUCTION**

REV	DATE	DESCRIPTION
5	04.15.15	REVISED PER STAFF COMMENTS & RESUBMITTED TO CITY
4	02.06.15	SUBMITTED FINAL SITE PLAN APPLICATION TO CITY
3	07.08.14	REVISED PER ENGINEERING PEER REVIEW COMMENTS AND RESUBMITTED TO CITY
2	06.12.14	REVISED PER PLANNING REVIEW STAFF COMMENTS AND RESUBMITTED TO CITY
1	05.05.14	SUBMITTED TO CITY



PROJECT	16 MIDDLE STREET PORTLAND, MAINE
SHEET TITLE	UTILITY & MISCELLANEOUS DETAILS
CLIENT	BATEMAN PARTNERS LLC

<b>FST</b> 100 YEARS	<b>FAY, SPOFFORD &amp; THORNDIKE</b> ENGINEERS · PLANNERS · SCIENTISTS 778 MAIN ST, SUITE 8, SOUTH PORTLAND, ME 04106
DRAWN: CDD	DATE: MAY 2014
DESIGNED: JAL	SCALE: N.T.S.
CHECKED: JAL	JOB NO. SP-M150
FILE NAME: SP-M150-DET	
SHEET	<b>C-6.2</b>

R:\SP-M150 India & Middle Sts\Cadd\Permit Set\dwg\SP-M150-DET.dwg, C-6.2 MIDDLE ST, 4/14/2015 4:58:49 PM, dube, c. 1:1