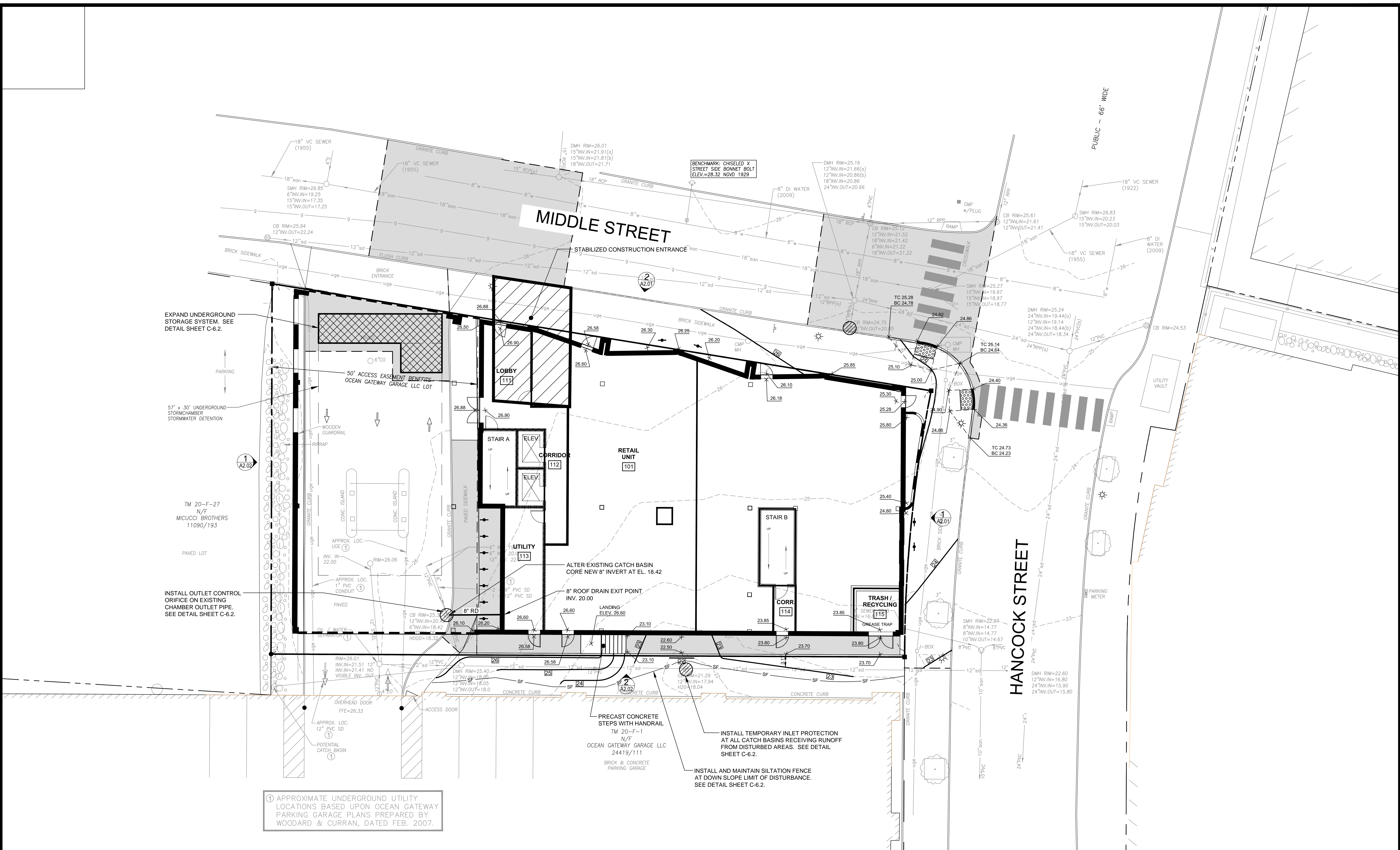
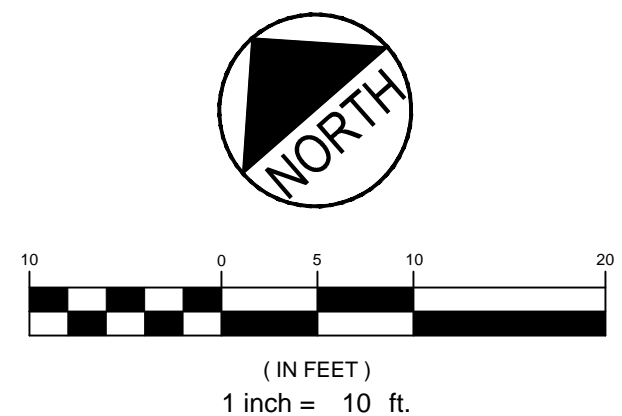


R:\SP-M150 India & Middle Sts\Cadd\Permit Set\dwg\SP-M150-GRADING & DRAINAGE.dwg, 4/15/2015 11:20:43 AM, dube, c. 1:1

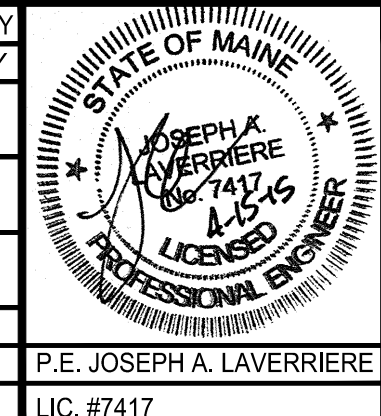


① APPROXIMATE UNDERGROUND UTILITY LOCATIONS BASED UPON OCEAN GATEWAY PARKING GARAGE PLANS PREPARED BY WOODARD & CURRAN, DATED FEB. 2007.

PRELIMINARY - NOT FOR CONSTRUCTION



REV	DATE	DESCRIPTION
6	04.15.15	REVISED PER STAFF COMMENTS & RESUBMITTED TO CITY
5	02.06.15	SUBMITTED FINAL SITE PLAN APPLICATION TO CITY
4	07.22.14	REVISED GRADING TO REFLECT UPDATED LANDSCAPE PLANTERS
3	07.08.14	REVISED PER ENGINEERING PEER REVIEW COMMENTS AND RESUBMITTED TO CITY
2	06.12.14	REVISED PER PLANNING REVIEW STAFF COMMENTS AND RESUBMITTED TO CITY
1	05.05.14	SUBMITTED TO CITY



PROJECT  
16 MIDDLE STREET  
PORTLAND, MAINE

SHEET TITLE  
GRADING, DRAINAGE &  
EROSION CONTROL PLAN

CLIENT  
BATEMAN PARTNERS LLC

**FST** FAY, SPOFFORD & THORNDIKE  
ENGINEERS - PLANNERS - SCIENTISTS  
778 MAIN ST, SUITE B, SOUTH PORTLAND, ME 04106

DRAWN: CDD DATE: MAY 2014  
DESIGNED: JAL SCALE: 1" = 10'  
CHECKED: JAL JOB NO. SP-M150  
FILE NAME: SP-M150-GRADING & DRAINAGE  
SHEET C-4.0