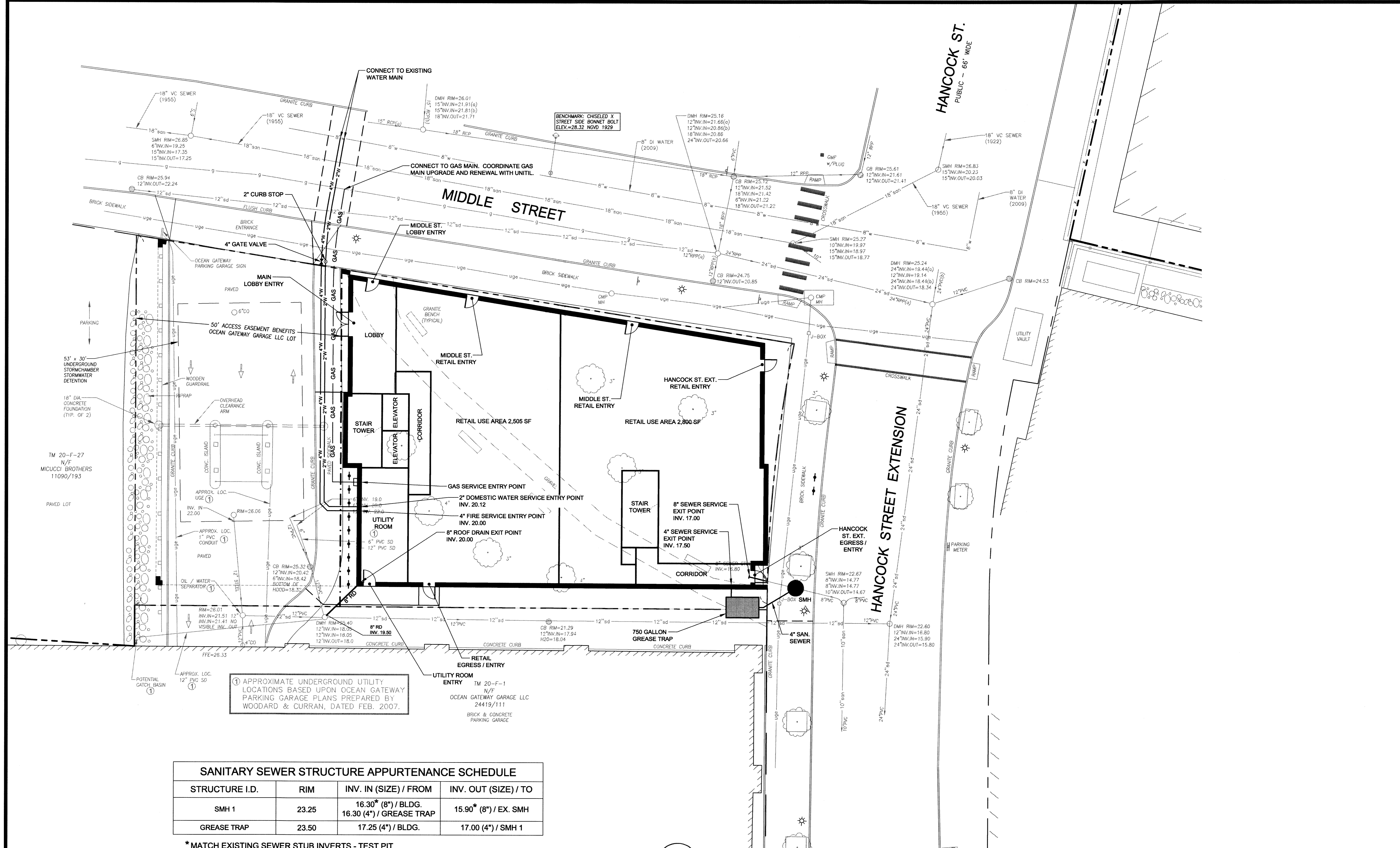


R:\SP-M150 India & Middle Sts\SP-M150-UTILITY PLAN.dwg C-5.0 MIDDLE ST. 5/1/2014 2:35:51 PM, Dube, C, 1:1



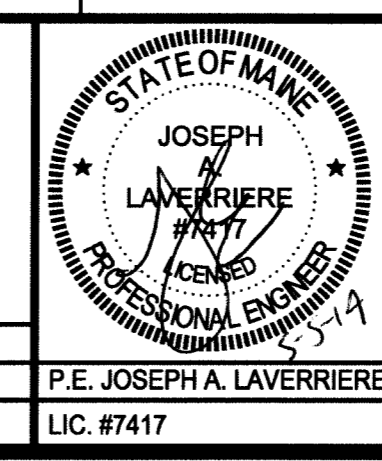
① APPROXIMATE UNDERGROUND UTILITY LOCATIONS BASED UPON OCEAN GATEWAY PARKING GARAGE PLANS PREPARED BY WOODARD & CURRAN, DATED FEB. 2007.

SANITARY SEWER STRUCTURE APPURTENANCE SCHEDULE			
STRUCTURE I.D.	RIM	INV. IN (SIZE) / FROM	INV. OUT (SIZE) / TO
SMH 1	23.25	16.30* (8") / BLDG. 16.30 (4") / GREASE TRAP	15.90* (8") / EX. SMH
GREASE TRAP	23.50	17.25 (4") / BLDG.	17.00 (4") / SMH 1

\*MATCH EXISTING SEWER STUB INVERTS - TEST PIT TO VERIFY PRIOR TO ORDERING STRUCTURE.

PRELIMINARY - NOT FOR CONSTRUCTION

REV	DATE	DESCRIPTION
1	05.05.14	SUBMITTED TO CITY



PROJECT	16 MIDDLE STREET PORTLAND, MAINE
SHEET TITLE	UTILITY PLAN
CLIENT	BATEMAN PARTNERS LLC

<b>FAY, SPOFFORD &amp; THORNDIKE</b> ENGINEERS · PLANNERS · SCIENTISTS 778 MAIN ST, SUITE 8, SOUTH PORTLAND, ME 04106	
DRAWN: CDD	DATE: MAY 2014
DESIGNED: JAL	SCALE: 1" = 10'
CHECKED: JAL	JOB NO. SP-M150
FILE NAME: SP-M150-UTILITY PLAN	
SHEET	C-5.0