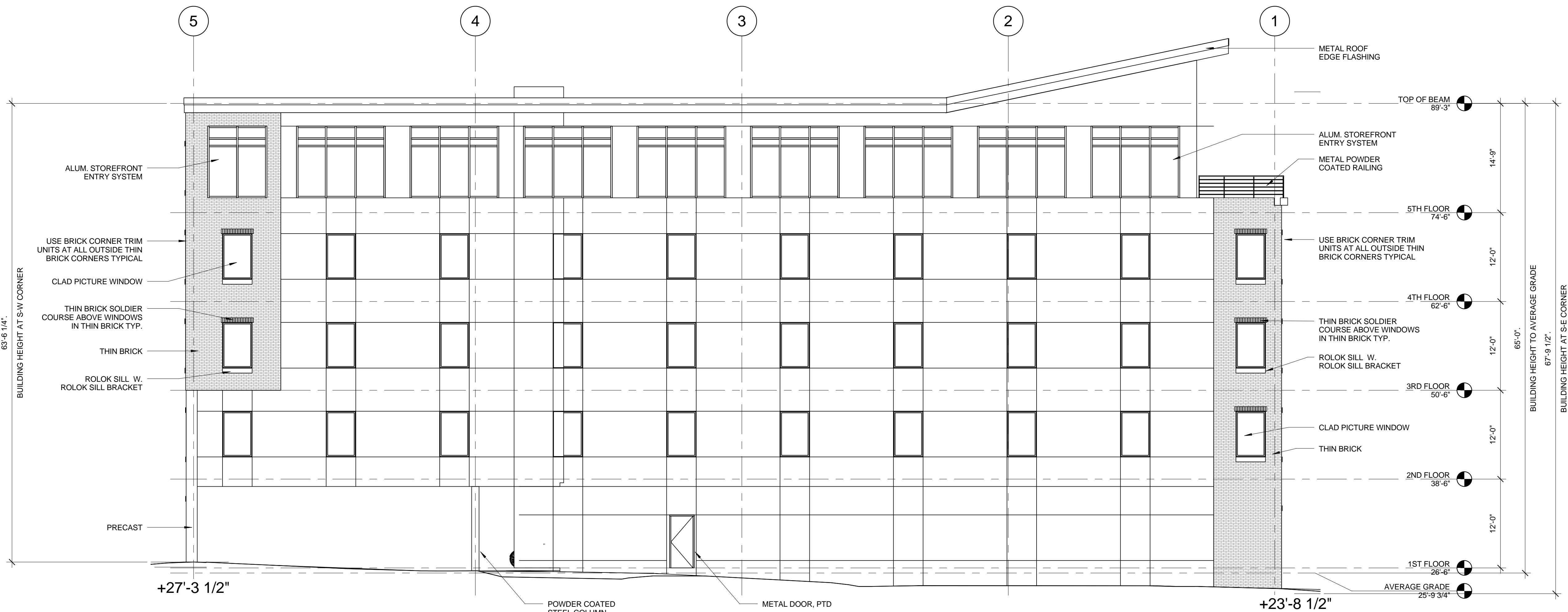
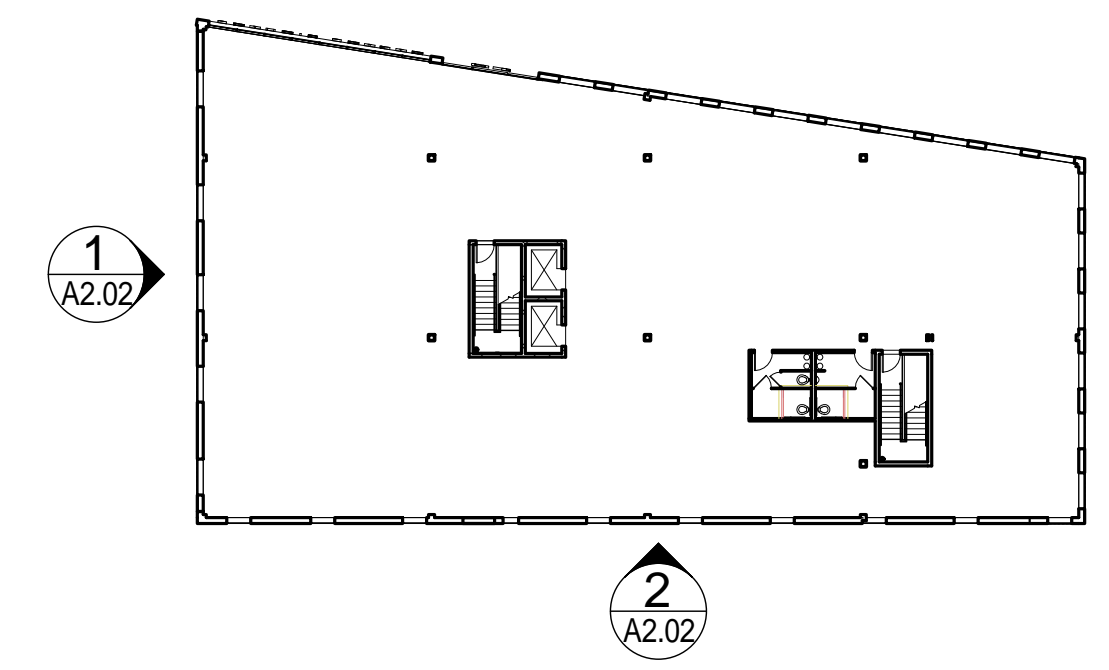


1 | WEST ELEVATION

1/8" = 1'-0" 0 2'-0" 4'-0" 8'-0" 16'-0"

GENERAL NOTES:
 1. AVERAGE GRADE BY DEFINITION: 4 CORNER AVERAGE GRADE - NE 27'-0" + NW 25'-3" + SW 23'-8 1/2" + SE 27'-3 1/2" = 103'-3" / 4 = 25'-9 3/4" (AVERAGE GRADE)
 2. BUILDING HEIGHT: THE VERTICAL MEASUREMENT AT THE FOUR CORNERS FROM GRADE TO HIGHEST POINT OF ROOF BEAM - NE 65'-6 3/4" + NW 63'-9 3/4" + SW 63'-6 1/4" + SE 67'-1 1/4" = 260'/4 = 65 FEET (BUILDING HEIGHT)



2 | SOUTH ELEVATION

1/8" = 1'-0" 0 2'-0" 4'-0" 8'-0" 16'-0"

Prepared For: **BATEMAN PARTNERS, LLC.** Portland, ME 04112

Consultant: **ARCHETYPE architects**
 48 Union Wharf Portland, Maine 04101
 (207) 772-6022 Fax (207) 772-4056

Architect: **ARCHETYPE architects**

Project: **16 MIDDLE STREET**
 MIDDLE STREET
 PORTLAND, MAINE

Revisions:

Date: **MAY 1, 2014** Scale: **As indicated**

BUILDING ELEVATIONS

A2.02