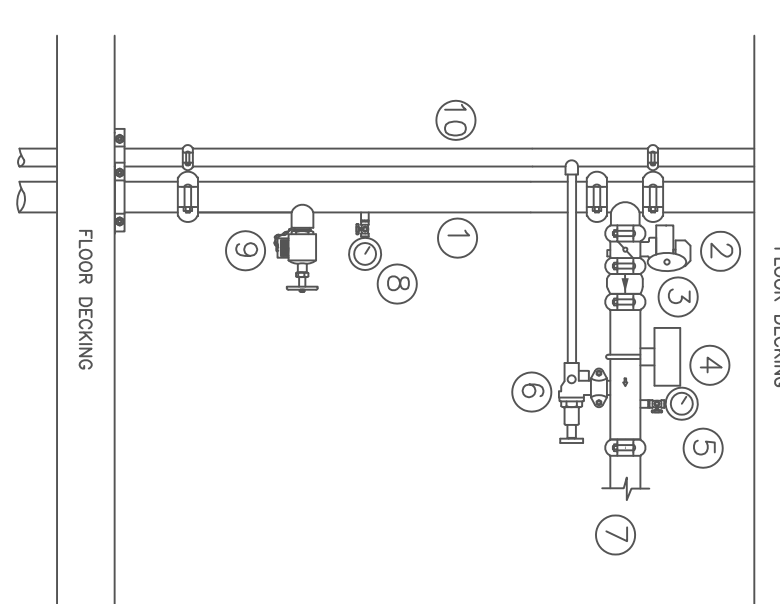


- COMBINED STANDPIPE DESCRIPTIONS**
1. 4" COMBINED STANDPIPE RISER WITH ZONE VALVE PER FLOOR.
 2. BUTTERFLY VALVE
 3. 1/2" BRASS UPRIIGHT
 4. VALVE LOCKING DEVICE
 5. SYSTEM PRESSURE GAUGE
 6. 1/2" BRASS UPRIIGHT
 7. FEED TO FLOOR ZONE VALVE
 8. STANDPIPE WATER PRESSURE GAUGE
 9. 1/2" BRASS UPRIIGHT
 10. 1/2" MAIN DRAIN

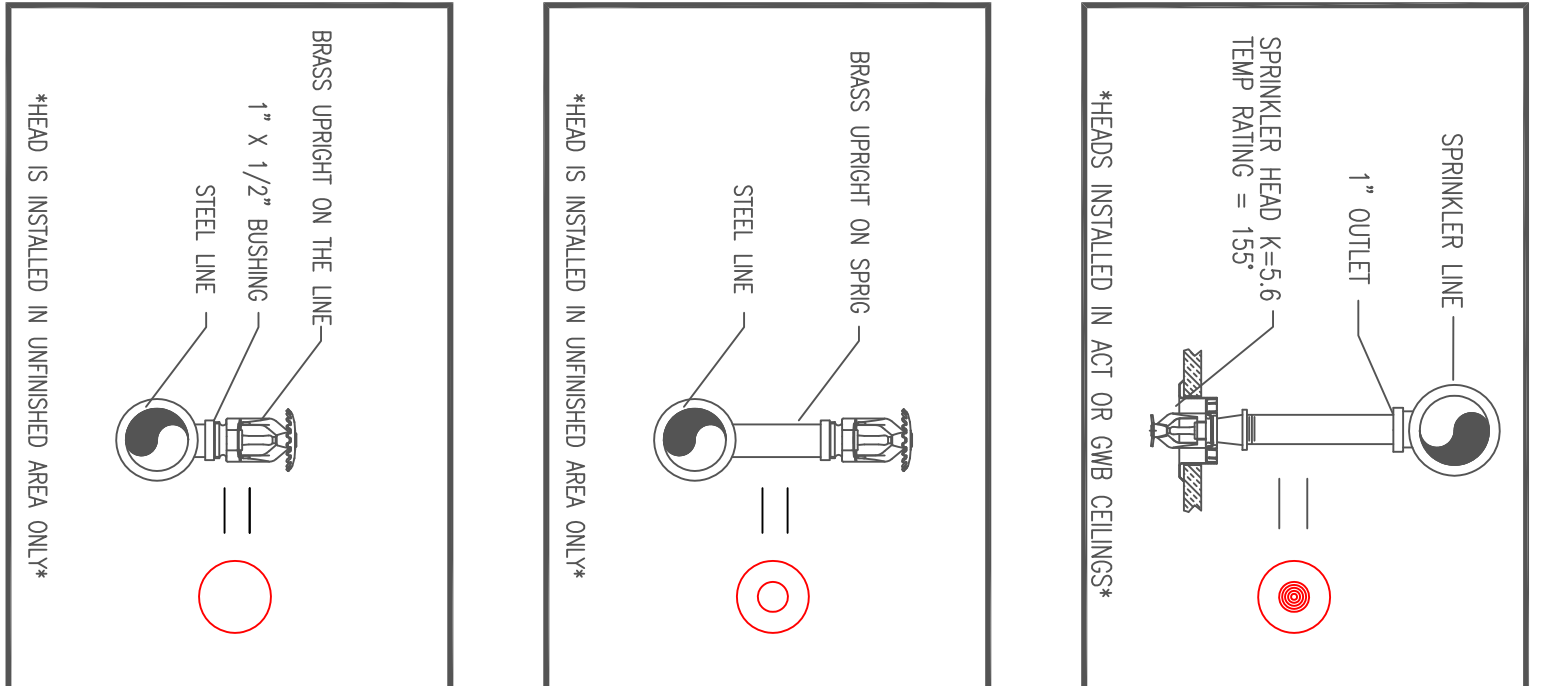


1.3 ZONE DETAIL
 SCALE: N.T.S.

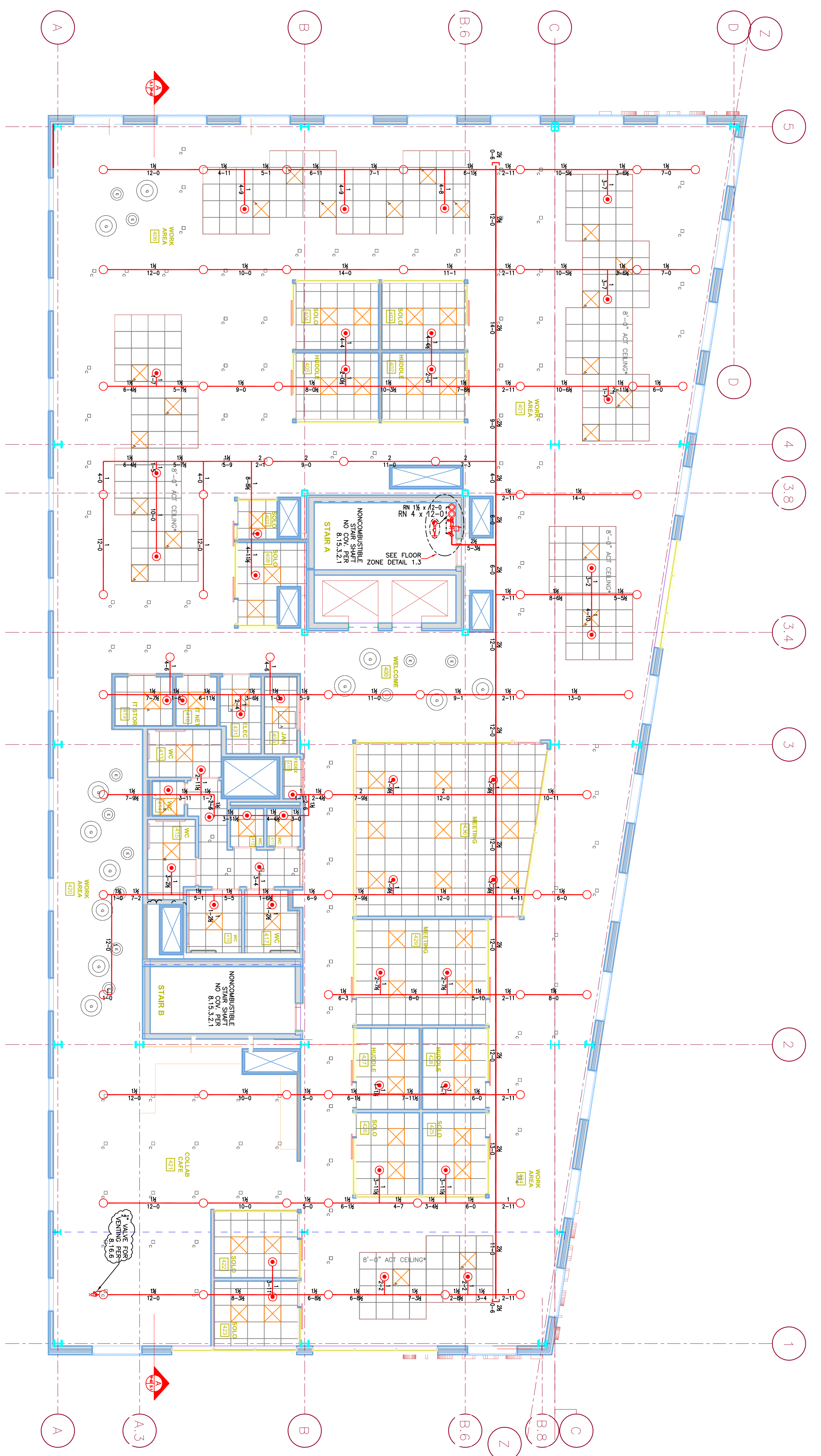
DESIGN & SYSTEM NOTES:

1. THIS DRAWING IS TO BE SCHEDULED TO ALL PRICES 1 1/2" & SMALLER TO BE SCHEDULE 40 WITH APPROPRIATE FINISH AND USE OF SPRINKLER HEADS SHALL BE IN ACCORDANCE WITH NFPA 13. POSITION, LOCATION, SPACING AND USE OF HANGERS SHALL BE IN ACCORDANCE WITH NFPA 13. IF BEING DONE IN ACCORDANCE WITH NFPA 13, SET PLANS SHALL BE SUBMITTED TO THE AUTHORITY HAVING JURISDICTION AND APPROVED BY THE AUTHORITY HAVING JURISDICTION. DIMENSIONS AND LOCATIONS GIVEN FOR SPRINKLER HEADS SHALL BE TO THE CENTER OF THE HEAD UNLESS OTHERWISE NOTED. OWNER IS RESPONSIBLE TO MAINTAIN THE SPRINKLER SYSTEM IN ACCORDANCE WITH NFPA 13. MAINTENANCE OF WATER-BASED FIRE PROTECTION SYSTEMS AND/ OR LINES, CORES AND BRANCHED MAINS AND/OR LOCAL TRUNKS TO COORDINATE THEIR WORK WITH ALL MECHANICAL, ELECTRICAL AND PLUMBING SPRINKLER CONTRACTOR. ALL ELECTRICAL WORK IS TO BE DONE BY OTHERS.

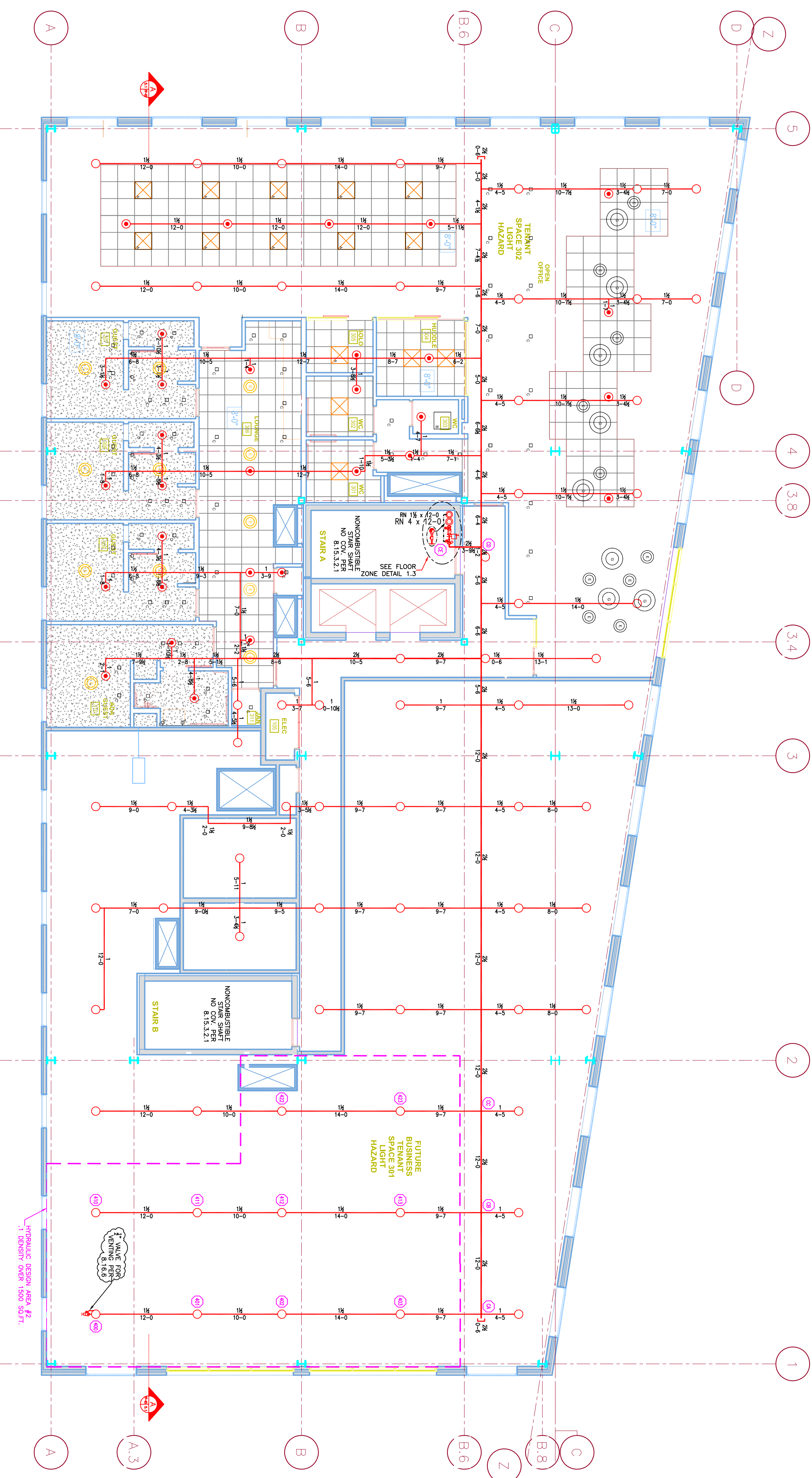
- LEGEND:**
- MAIN PIPE RISER UP OR DOWN
 - MAIN PIPE RISER DOWN
 - PROPOSED WET PIPE
 - PROPOSED DRY PIPE
 - SYSTEM RISER
 - PIPE PITCH 2" MAINS 3" LINES
 - HYDRAULIC CALC. POINT



1.2 HEAD DETAILS
 SCALE: N.T.S.



2.1 4TH FLOOR (ZONE 4)
 SCALE 1/8" = 1'-0"
 TOTAL PROTECTED AREA: 10,300 SQ.FT.



2 3RD FLOOR (ZONE 3)
 SCALE 1/8" = 1'-0"
 TOTAL PROTECTED AREA: 10,300 SQ.FT.

DESIGN AREA NUMBER 2
 HYDRAULIC DESIGN CRITERIA
 LOCATION: 3RD FLOOR BUSINESS TRAVEL SPACE
 AREA OF PROTECTION: 100-50 FT.
 DESIGN: 1.5" WET PIPE
 HEAD SPACING: 225 SQ.FT.
 SIGHTED DRAWING INCLUDING: 1.5" WET PIPE
 SAFETY WARNING: 34-199