

PROJECT DESCRIPTION

**BUILDING CONST:**  
 THE BUILDING IS 5 LEVELS OF BUSINESS/ASSEMBLY OCCUPANCY CONSTRUCTED OF STEEL FRAMING, FIBERGLASS INSULATION, STEEL SPRINKLER PIPING AS SHOWN ON PLAN.  
**BUILDING OCCUPANCY:**  
 THE BUILDING WAS BUILT & DESIGNED FOR MERCANTILE ON 1ST FLOOR AND BUSINESS ON 2ND THROUGH 5TH FLOORS.  
**SPRINKLER SYSTEM DESIGN:**  
 THERE IS A DRY SYSTEM FOR THE DRIVE THROUGH TO ADJACENT PARKING GARAGE. THERE IS A ZONE VALVE ASSEMBLY FOR EACH FLOOR. THE 1ST FLOOR IS IN THE MECHANICAL ROOM WHILE ALL OTHER FLOORS WILL HAVE THE ZONE VALVE IN STAIRWELL A. PREVENT WATER FLEED PIPE FROM FREEZING.  
 THE SPRINKLER SYSTEM WAS DESIGNED TO MEET APPLICABLE CODE REGARDING NFPA 13 2016ed.  
**STANDPIPE SYSTEM DESIGN:**  
 THERE IS A MANUAL CLASS I WET STANDPIPE RISER IN STAIR A WITH A 2 1/2" HOSE VALVE ON EACH LANDING (TOTAL OF 5) LOCAL FIRE DEPARTMENT.  
 THE STANDPIPE SYSTEM WAS DESIGNED TO MEET APPLICABLE CODE REGARDING NFPA 14 2016ed.

SITE LOCATION



HIGH TECH FIRE PROTECTION

P.O. BOX 156  
 MANOT, ME 04258-0258  
 TEL:(207) 998-2581 FAX:(207) 998-4877  
 NAME LICENSE # 102

GENERAL CONTRACTOR ON RECORD:  
 ALLED COOK CONSTRUCTION  
 P.M.: JP SCHWARTZ 415-0080  
 J.S.: PAUL HENRICK 303-8899

SPECIAL APPLICATIONS:

- LEGEND:
- NEW PIPE RISER UP OR DOWN
  - PROPOSED WET PIPE
  - SYSTEM RISER
  - PIPE PITCH & MAINS & LINES
  - HYDRAULIC CALC. POINT

DESIGN & SYSTEM NOTES:

1. REFER TO ALL SCHEDULES TO ALL PRINGS 1 1/2" & SMALLER TO BE SCHEDULE 40 WITH APPROPRIATE FINISHING AND USE OF SPRINKLER PIPING SHALL BE IN ACCORDANCE WITH NFPA 13. POSITION, LOCATION, SPACING, AND USE OF HANGERS SHALL BE IN ACCORDANCE WITH NFPA 13. ALL BEEN DONE IN ACCORDANCE WITH NFPA 13. (SEE PLANS FOR LOCATION OF RISE AND SYSTEM HANGERS). HIGH TEST FIRE PROTECTION IS TO BE ON WORK AT 6" MAIN 7" AFF NEAR OF BUILDING. DIMENSIONS AND LOCATIONS GIVEN FOR SPRINKLER ACTUAL FIELD CONDITIONS TO ACCOMMODATE OWNERS TO PROVIDE ACCURATE HEAT THROUGHOUT BUILDING TO PROTECT WATER FILLED PIPING AND EQUIPMENT FROM FREEZING TEMPERATURES. (SEE PLANS ON DRY) AND FOR FIRE ACTION SYSTEMS. OWNER IS RESPONSIBLE TO MAINTAIN THE SPRINKLER OF WATER-BASED FIRE PROTECTION SYSTEMS AND/ OR LINES, COSES AND BRANCHES, AND/OR LOCAL ALL MECHANICAL, ELECTRICAL AND PLUMBING TRADES TO COORDINATE THEIR WORK WITH SPRINKLER CONTRACTOR. ALL ELECTRICAL WORK IS TO BE DONE BY OTHERS.

HEAD LEGEND:

- GLOBE\*
- MODEL GL5610
- 3/2" WHITE PENDENT SEMI-RECESSED ESC.
- CENTER OF TILE\*
- ON LINE GLOBE\*
- MODEL GL5615
- 1/2" BRASS UPRIGHT ON SPRIG OR LINE
- DEFLECTORS 1" TO 1 1/2" BELOW NON-COMBUSTIBLE CEILING
- GLOBE\*
- MODEL GL5626
- 1 1/2" BRASS HORIZONTAL SIDEWALL EXPOSED IN ELEVATOR PIT 18" ABOVE PIT FLOOR

\*OR APPROVED EQUAL\*

SCALE: 1/8" = 1'-0"

REVISIONS:

NO. DATE DESCRIPTION:

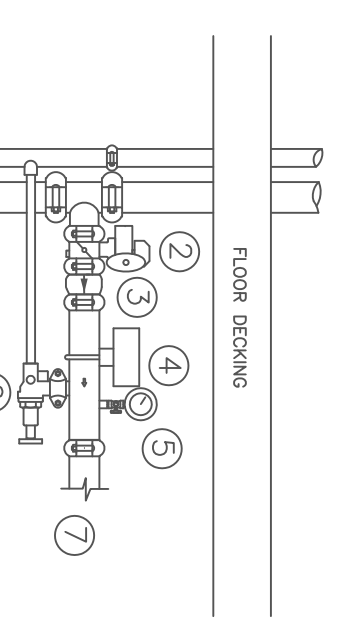
DATE: JULY 26, 2017  
 DESIGNER: ED DOLAN (RMS# 515)  
 CHECKED BY: AL FOSS  
 LOCATION:  
 16 MIDDLE STREET  
 PORTLAND, ME  
 DRAWING TITLE:  
 16 MIDDLE STREET  
 1ST & 2ND FLOOR  
 FIRE PROTECTION PLAN  
 (NFPA 13 2016ed.)  
 DRAWING NO.:  
 FP-01

1.5 PLOT PLAN  
 SCALE: N.T.S.

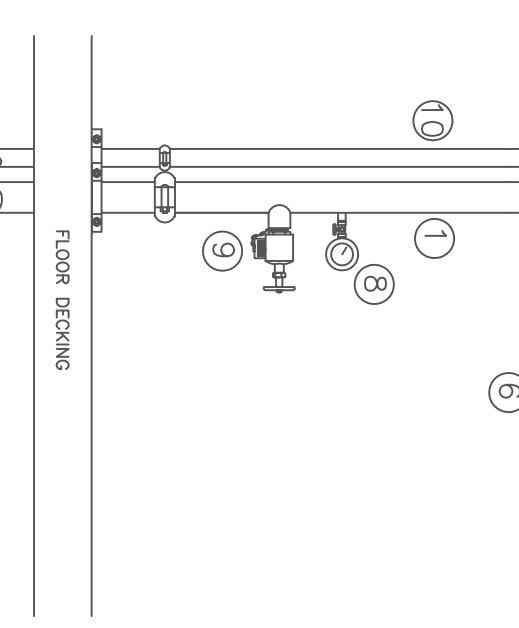


COMBINED STANDPIPE DESCRIPTIONS

1. 4" COMBINED STANDPIPE RISER WITH ZONE VALVE PER FLOOR.
2. BUTTERFLY VALVE
3. SWING CHECK VALVE
4. 2" BRASS UPRIGHT
5. SYSTEM PRESSURE GAUGE
6. TEST N. DRAIN W/ WATERS PIPED TO MAIN DRAIN
7. 2" STAMPPIPE WATER PRESSURE GAUGE
8. STAMPPIPE WATER PRESSURE GAUGE
9. 2" STAMPPIPE WATER PRESSURE GAUGE
10. 1 1/2" WET MAIN DRAIN

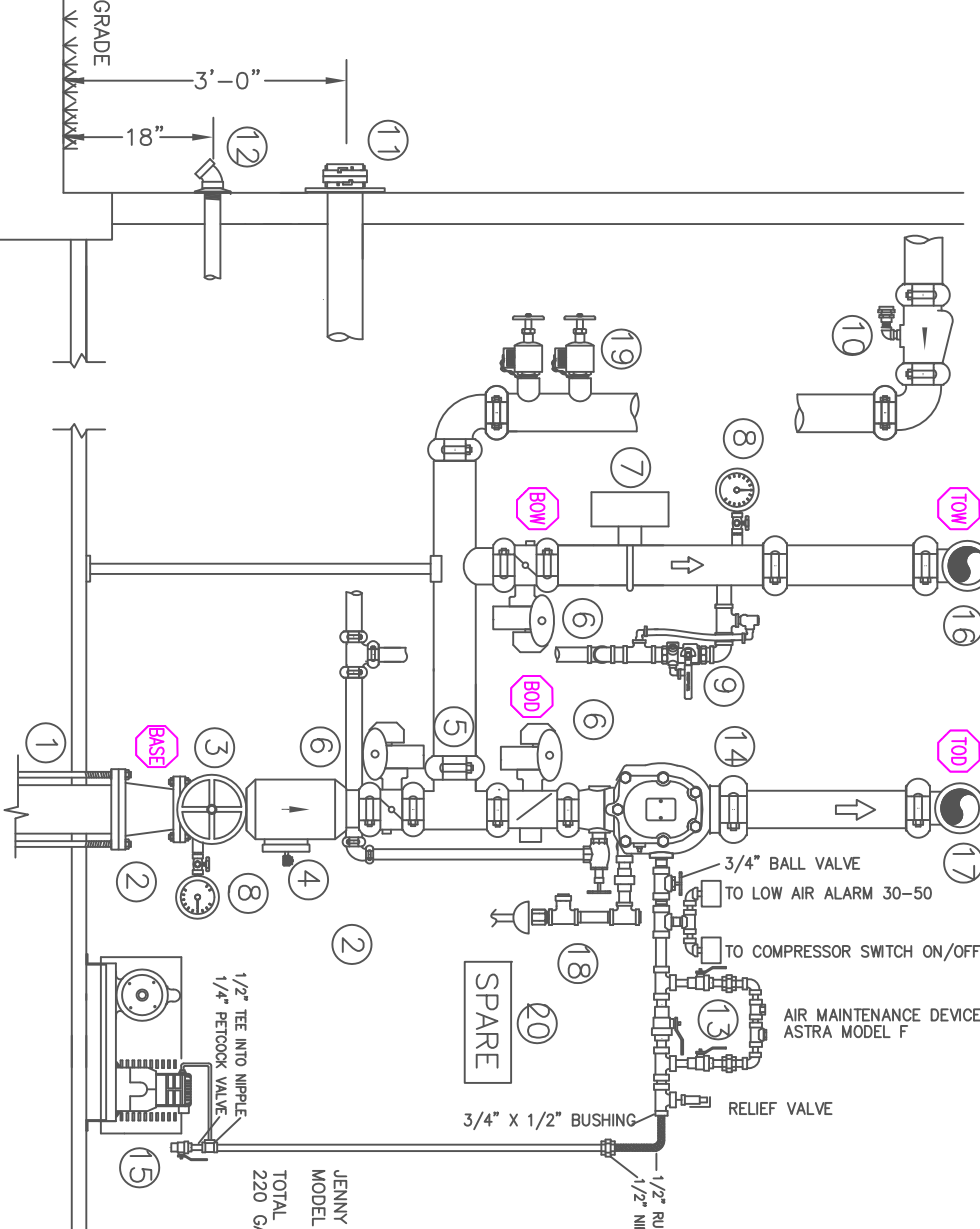


1.3 ZONE DETAIL  
 SCALE: N.T.S.

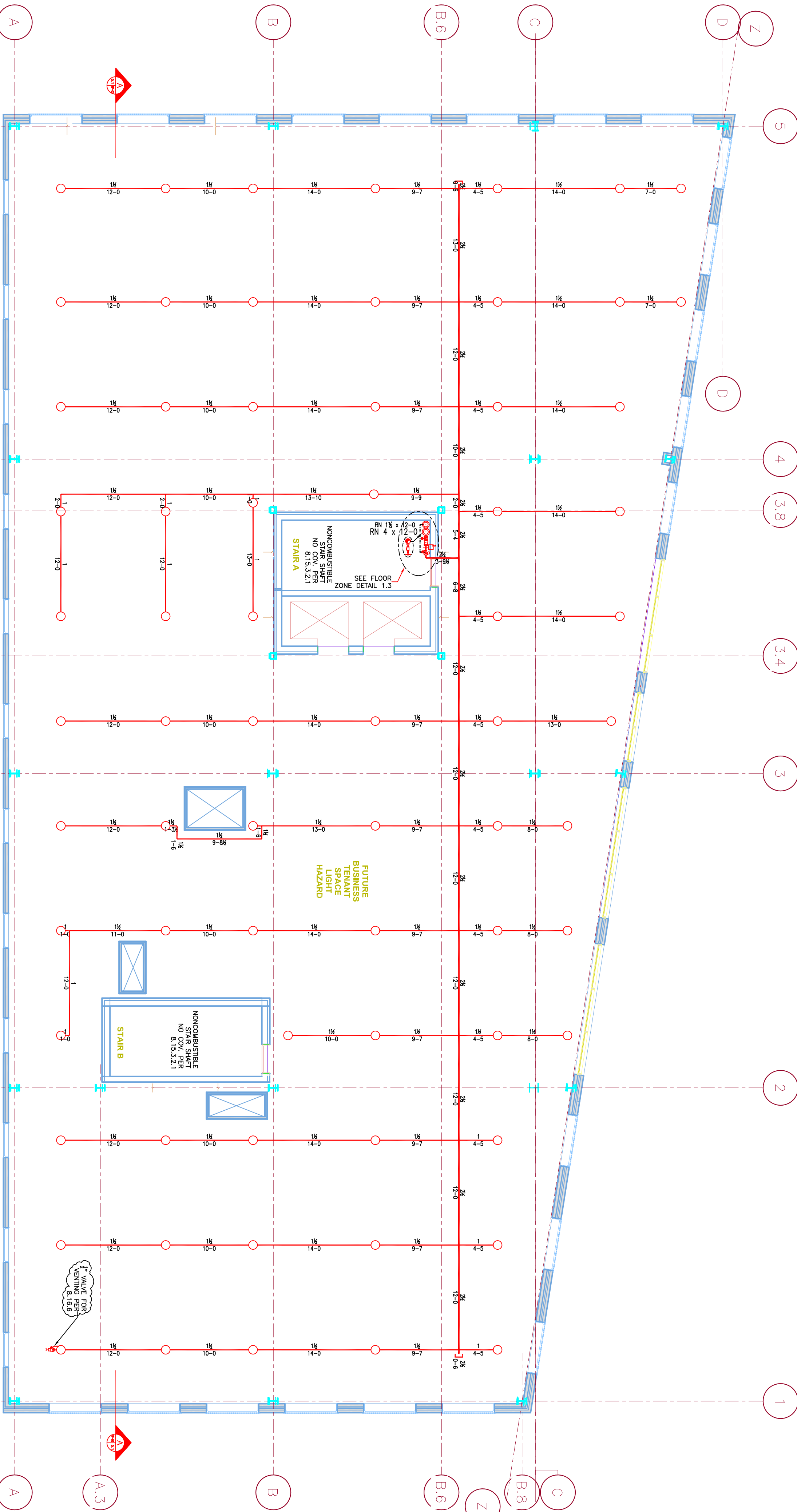
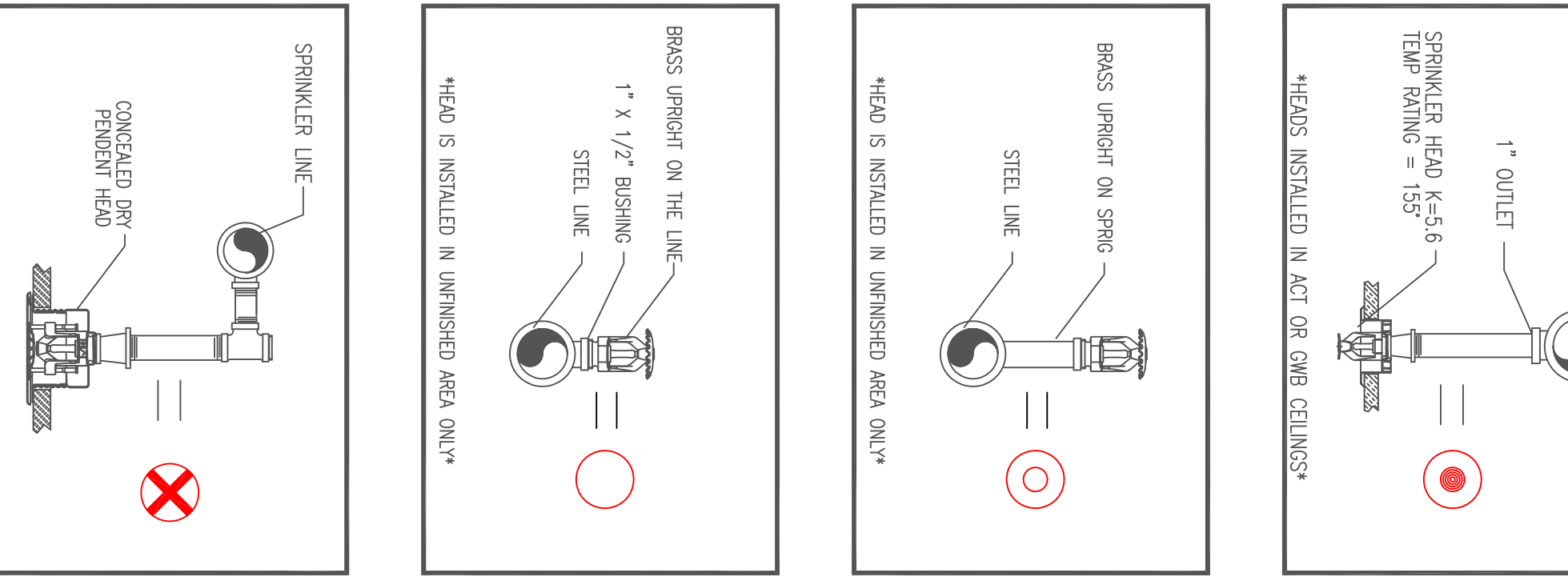


SPRINKLER SYSTEM RISER DETAIL DESCRIPTIONS

1. 6" DUCT UNDERGROUND (DU) RISER 1"-6" ABOVE GRADE MAINLINE
2. 4" BUTTERFLY VALVE
3. 4" OAK GATE VALVE WITH PRESSURE GAUGE & ROTTER (OS&I)-1 TAMPER SWITCH
4. 4" WELDED JOIST SUPPORT HANGER
5. 4" BUTTERFLY VALVE WITH TAMPER SWITCH
6. 2" BRASS UPRIGHT
7. 2" STAMPPIPE WATER PRESSURE GAUGE
8. 2" STAMPPIPE WATER PRESSURE GAUGE
9. 2" STAMPPIPE WATER PRESSURE GAUGE
10. 1 1/2" WET MAIN DRAIN
11. 1 1/2" WET MAIN DRAIN
12. 2" MAIN DRAIN PIPED TO EXTERIOR 18" ABOVE GRADE
13. 2" MAIN DRAIN PIPED TO EXTERIOR 18" ABOVE GRADE
14. 3" ASTA DRY VALVE
15. 3" ASTA DRY VALVE
16. 3" ASTA DRY VALVE
17. 3" WET FEED TO SPRINKLER SYSTEMS AND COMBINED STANDPIPE RISER
18. 3" WET FEED TO SPRINKLER SYSTEMS AND COMBINED STANDPIPE RISER
19. (2) 2 1/2" HOSE VALVES FOR FORWARD FLOW TESTING OF BACKFLOW
20. SPRINKLER HEAD BOX

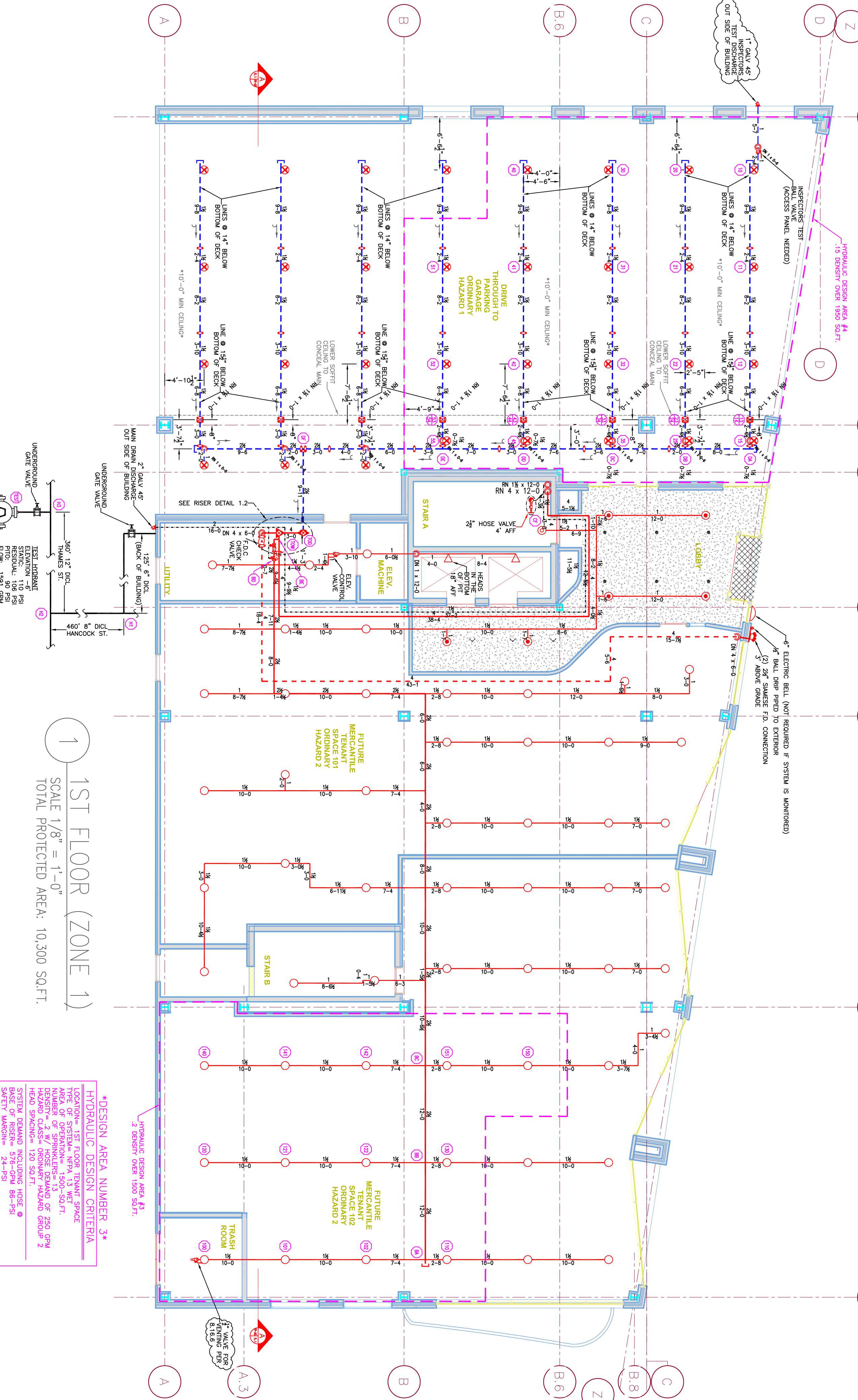


1.4 HEAD DETAILS  
 SCALE: N.T.S.



1.1 2ND FLOOR (ZONE 2)  
 SCALE 1/8" = 1'-0"  
 TOTAL PROTECTED AREA: 10,300 SQ.FT.

HYDRAULIC DESIGN CRITERIA:  
 TYPE OF SYSTEM: WET PIPE  
 TYPE OF PROTECTION: 180-250°F  
 DESIGN: C.I.S.V. / ANTI-DRAWN  
 HEAD SPACING: 120 SQ.FT.  
 SAFETY MARGIN: 24-25



1 1ST FLOOR (ZONE 1)  
 SCALE 1/8" = 1'-0"  
 TOTAL PROTECTED AREA: 10,300 SQ.FT.

HYDRAULIC DESIGN CRITERIA:  
 TYPE OF SYSTEM: WET PIPE  
 TYPE OF PROTECTION: 180-250°F  
 DESIGN: C.I.S.V. / ANTI-DRAWN  
 HEAD SPACING: 120 SQ.FT.  
 SAFETY MARGIN: 24-25