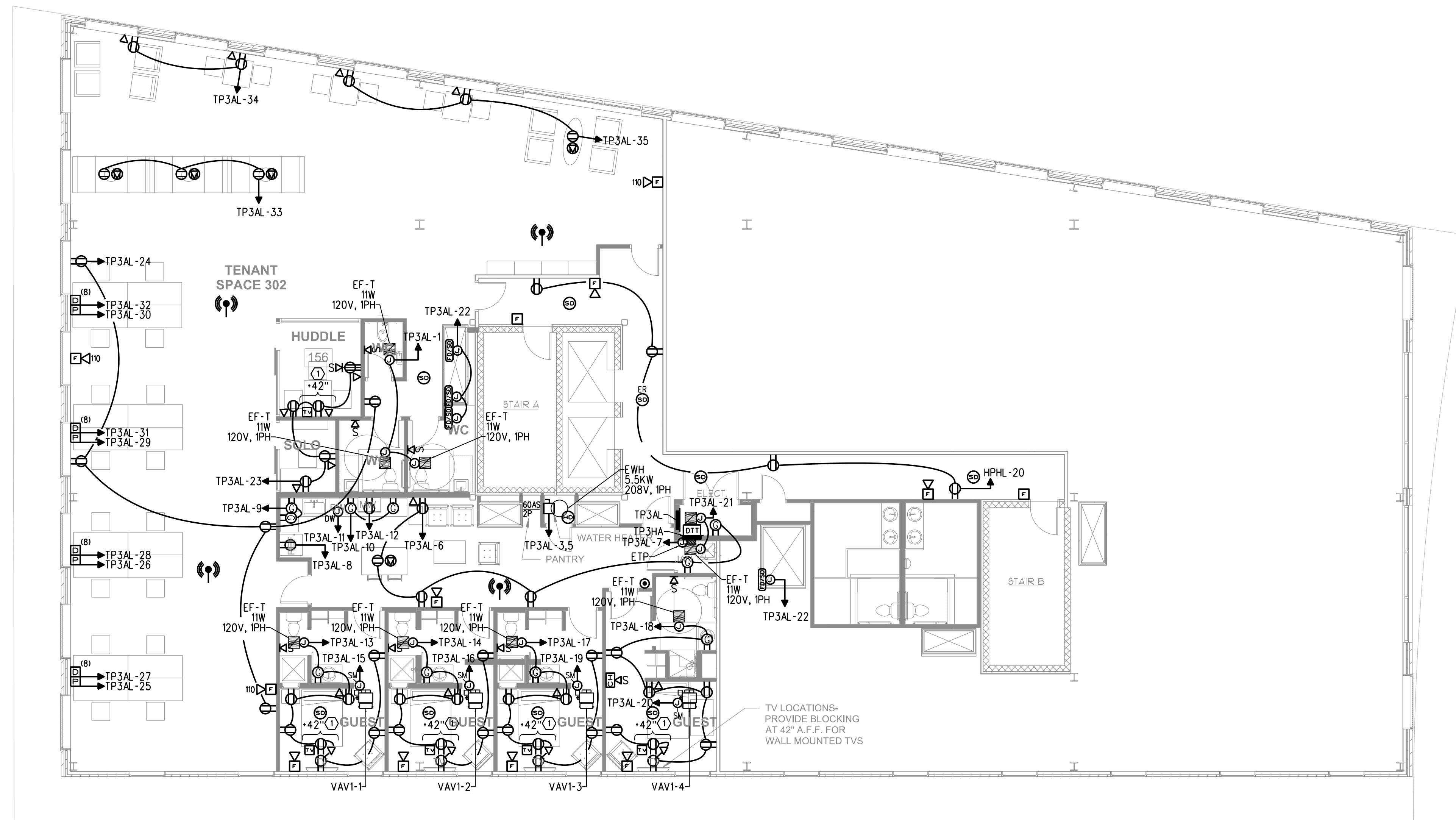


POWER GENERAL NOTES

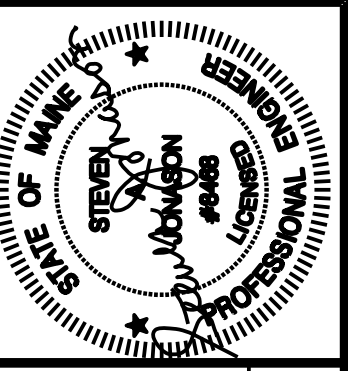
1. EF-Ts LOCATED IN JANITOR ROOM AND ELECTRICAL CLOSET SHALL BE WIRED FOR CONTINUOUS OPERATION.
2. ALL FIRE ALARM DEVICES SHALL BE CONNECTED TO FACP LOCATED IN GROUND FLOOR UTILITY ROOM.

POWER WORK NOTES

- Ⓢ CONTRACTOR SHALL CONFIRM MOUNTING HEIGHT PRIOR TO ROUGH-IN.

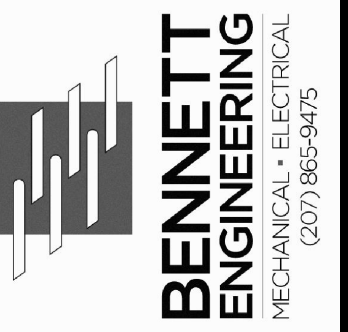


THIRD FLOOR PLAN
SCALE: 1/8" = 1'-0"



Prepared For: **Archetype**

Union Wharf
Portland, ME 04101



Consultant:



Project: **16 MIDDLE STREET OFFICE BUILDING**

MIDDLE STREET
PORTLAND, MAINE

Revisions:
02/20/2017: CD ISSUE

Date: **20 FEB 2017**
Scale: **1/8" = 1'-0" U.N.O.**

**TILSON TECHNOLOGIES:
THIRD FLOOR POWER PLAN**

E2.01