

Prepared For: **Archetype**
Union Wharf
Portland, ME 04101

Consultant: **BENNETT ENGINEERING**
MECHANICAL-ELECTRICAL
(207) 865-9475

Architect: **ARCHETYPE architects**
48 Union Wharf Portland, Maine 04101
(207) 772-0023 ARCHETYPE@ARCHETYPEPA.COM

Project: **16 MIDDLE STREET OFFICE BUILDING**
MIDDLE STREET
PORTLAND, MAINE

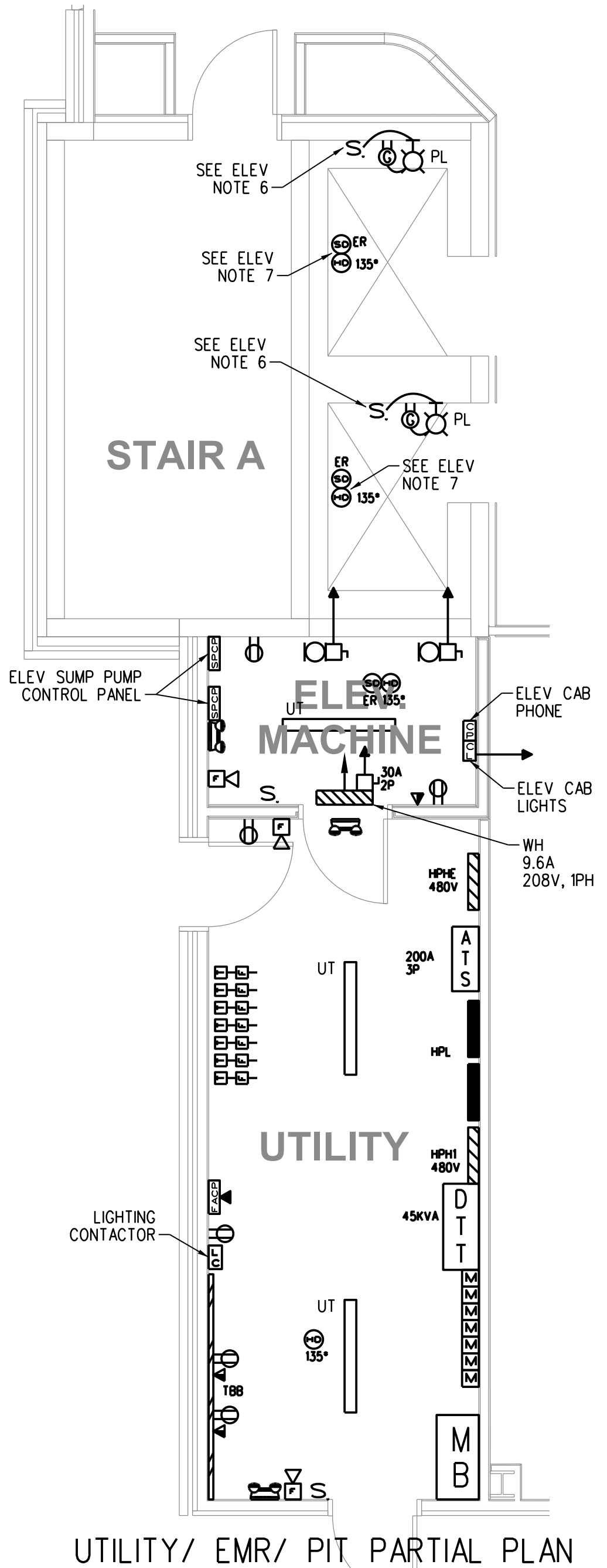
Revisions: 06/01/2016: CD ISSUE

Scale: 1/8" = 1'-0" U.N.O.
Date: 1 JUNE 2016

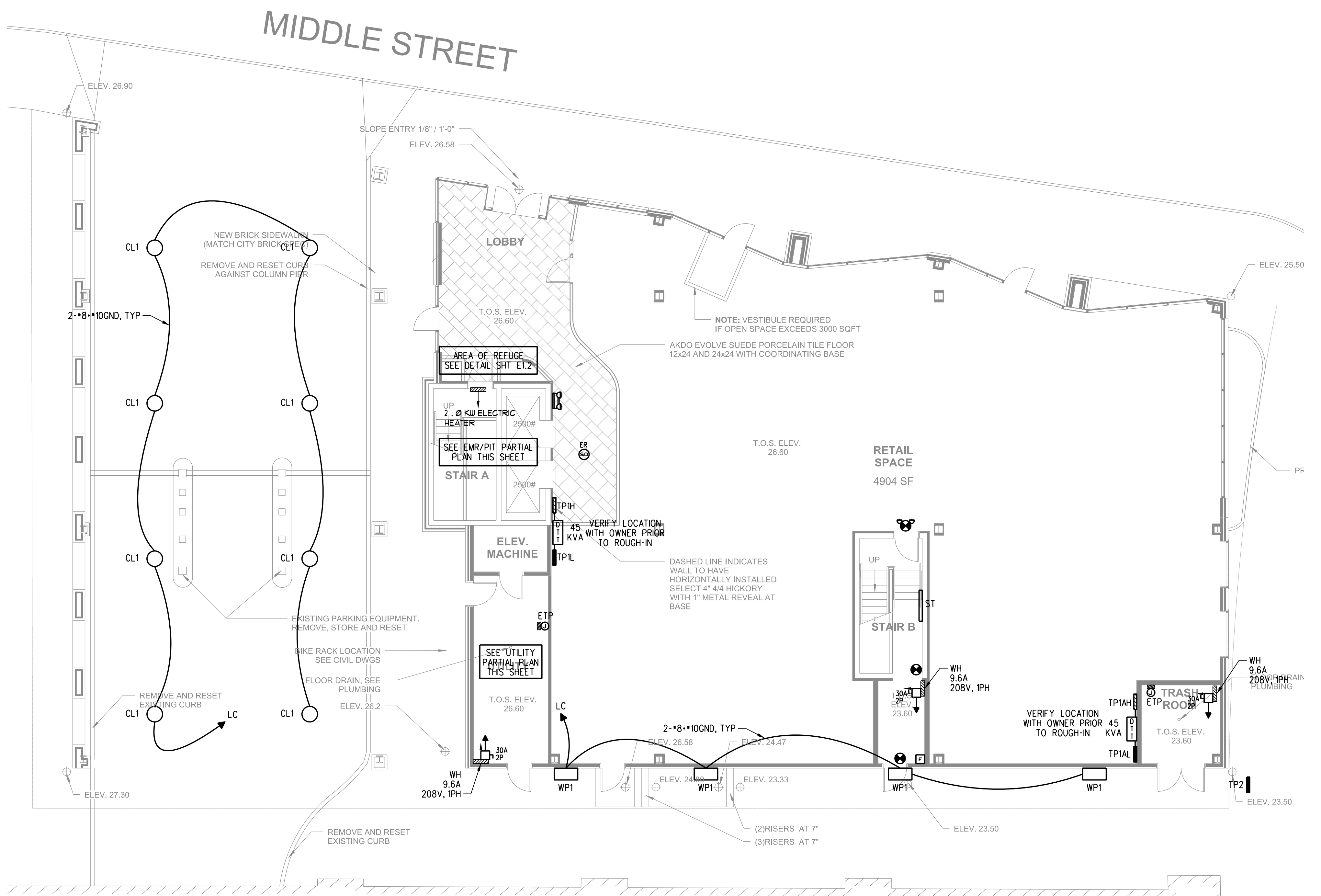
E1.1

ELEVATOR NOTES

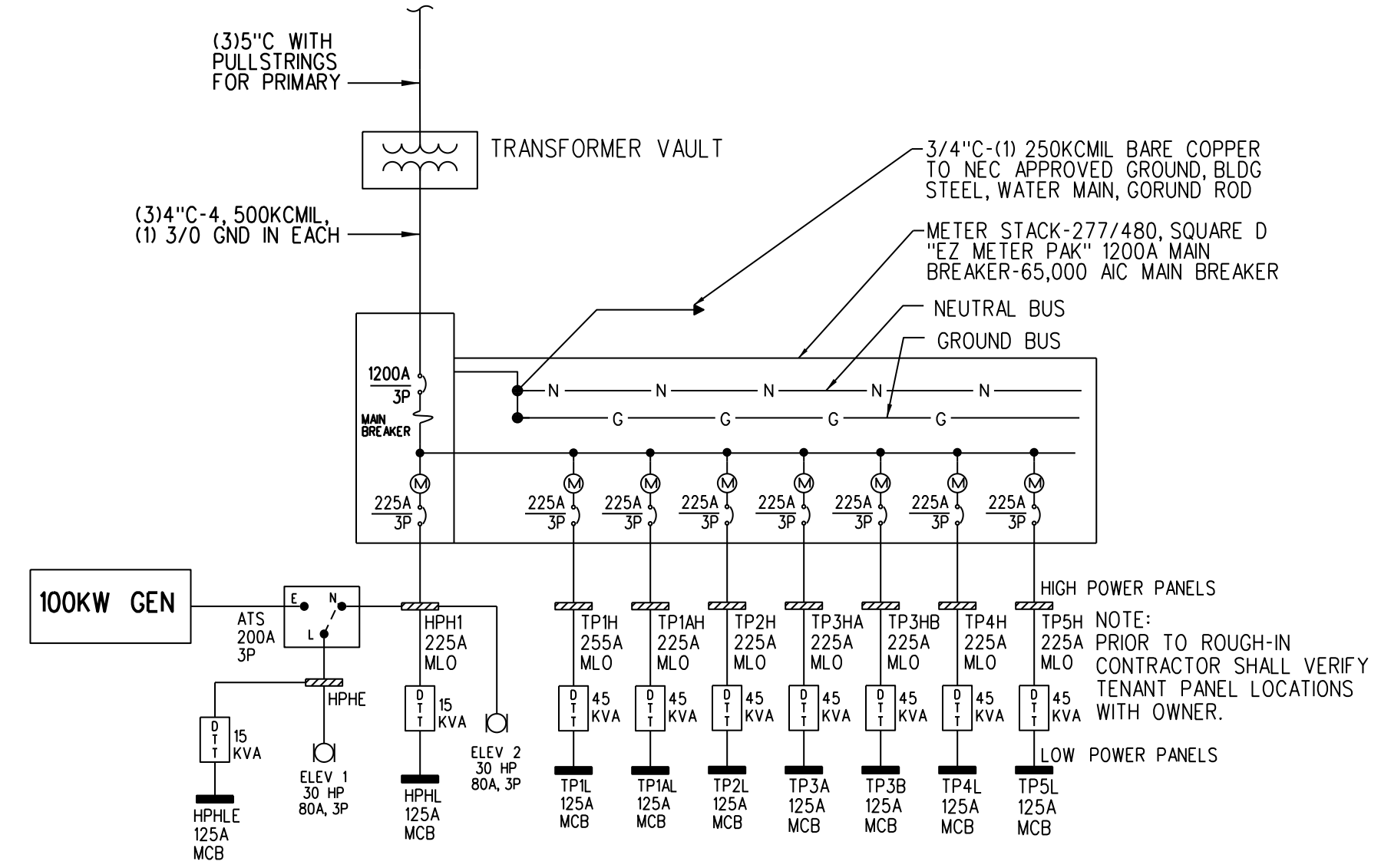
- CONNECT ALL REQUIRED SMOKE DETECTORS FOR ELEVATOR RECALL. VERIFY REQUIREMENTS WITH ELEVATOR VENDOR AND LOCAL FIRE DEPARTMENT FOR ELEVATOR SMOKE DETECTORS AND INSTALL IN ACCORDANCE WITH NFPA 72.
- PROVIDE ELEVATOR POWER SHUTDOWN VIA HEAT DETECTORS IN ELEVATOR SHAFT, PIT, AND MACHINE ROOM. HEAT DETECTORS ADJACENT TO SPRINKLER HEADS SHALL ALARM BEFORE SPRINKLER HEAD ACTIVATION BASED ON RATE OF TEMPERATURE RISE FOR THE SPRINKLER HEAD. HEAT DETECTORS SHALL BE INSTALLED WITHIN TWO FEET OF THE SPRINKLER HEAD. PROVIDE A CONNECTION TO A SHUNT-TRIP CIRCUIT BREAKER FOR ELEVATOR POWER SHUTDOWN. THE FIRE ALARM SYSTEM SHALL MONITOR SHUNT TRIP CONTROL POWER. COORDINATE WORK WITH THE LOCAL AUTHORITY HAVING JURISDICTION (AHJ).
- PROVIDE A CONNECTION FROM THE ELEVATOR TAMPER SWITCH TO THE FIRE ALARM CONTROL PANEL (FACP).
- COMPLY WITH REQUIREMENTS ASME A17.1 AND NFPA 72.
- AUTOMATIC TRANSFER SWITCHES (ATS) MONITORING: PROVIDE 2*14AWG-1*14GND IN 1/2" C, FROM ELEVATOR CONTROL PANEL TO ATS DRY CONTACTS.
- PLACE SWITCH AT TOP OF ELEVATOR PIT ACCESS LADDER. COORDINATE LIGHT AND RECEPTACLE LOCATION WITH ELEVATOR SUMP.
- PLACE ONE SET IN ELEVATOR PIT AND ONE SET AT TOP OF ELEVATOR SHAFT.
- COORDINATE LOCATION OF SUMP PUMP CONTROL PANEL WITH ELEVATOR SUMP LOCATION.
- CONTRACTOR SHALL CONFIRM LOCATION OF ALL ELEVATOR ASSOCIATED EQUIPMENT WITH VENDOR PRIOR TO ROUGH-IN.



UTILITY/ EMR/ PIT PARTIAL PLAN
SCALE: 1/4"=1'-0"
REFER TO ONE-LINE THIS SHEET FOR MORE INFORMATION



FIRST FLOOR PLAN
SCALE: 1/8"=1'-0"



ONE-LINE DIAGRAM
SCALE: NONE

LIGHT FIXTURE SCHEDULE

TYPE	MANUFACTURER AND MODEL NUMBER	LAMP INFO	REMARKS
CL1	LITHONIA KACM LED 1 49B350/50K SR4	KACM LED GEN 1, 5000K, TYPE 4 LENS	CANOPY FIXTURE
ST	COLUMBIA LBL4-40ML-ESDU-ELL14	51W, LED, 4000K	USED IN STAIRWAYS
WP1	HUBBELL QSP-20LU-5K-2-050-DB	36W LRD, 4700K	EXTERIOR WALL PACK. VERIFY FIXTURE COLOR AND MOUNTING LOCATIONS AND HEIGHT WITH ARCH PRIOR TO ROUGH-IN
UT	COLUMBIA LCR4-40HL-ESDU-GLR	56W, LED, 4000K	SURFACE MOUNTED IN UTILITY ROOMS
PL	PROGRESS 3649-3030K9	9W LED	ELEVATOR PIT LIGHT

- NOTES:
1. FIXTURES SHALL BE ENERGY STAR RATED OR HAVE HIGH PERFORMANCE BALLASTS AND LAMPS TO MEET STATE EFFICIENCY CRITERIA.
2. CONTRACTOR SHALL APPLY FOR ALL STATE EFFICIENCY INSENTIVES ON OWNERS BEHALF.