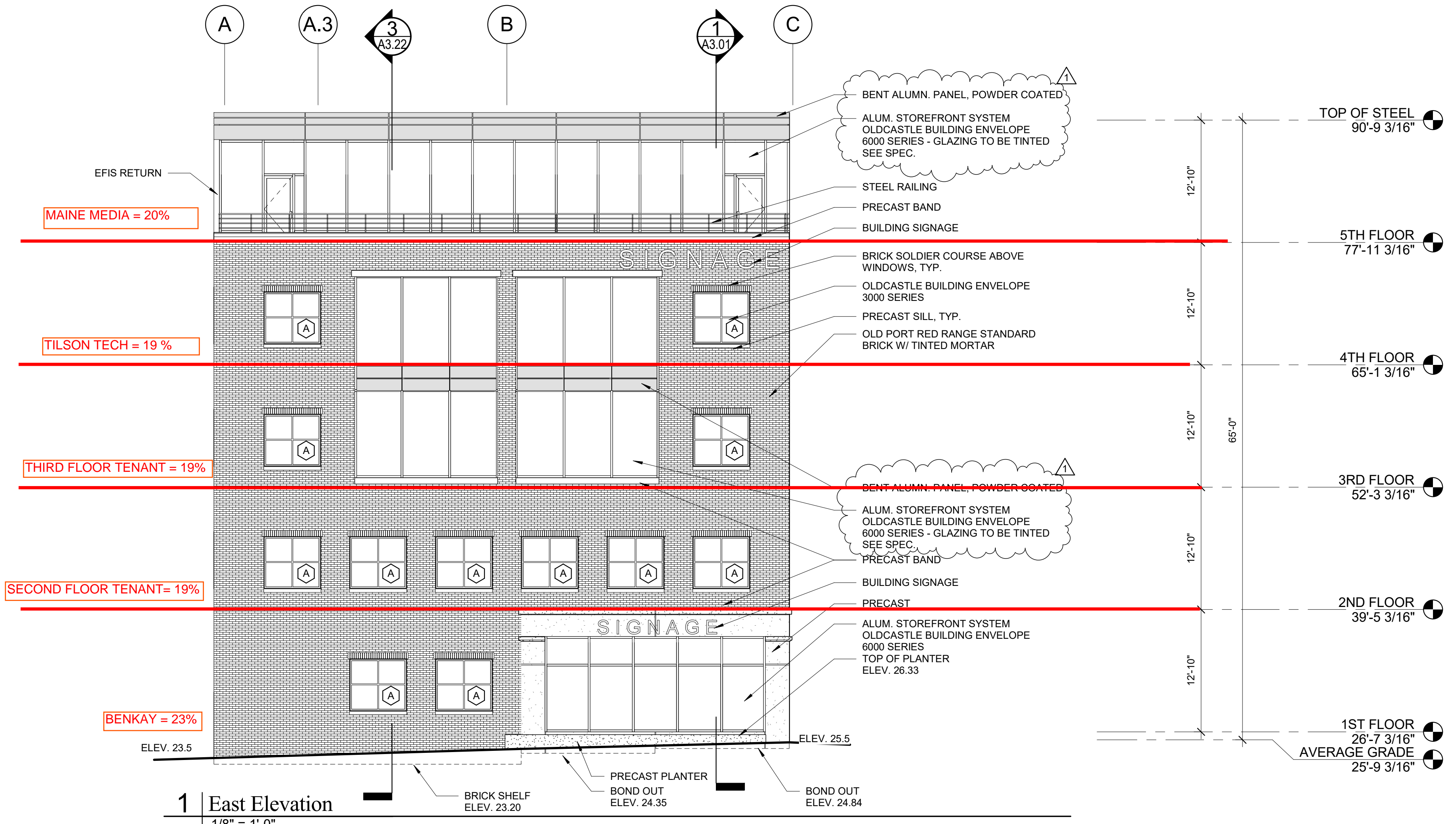


EAST FACADE = 4,035 SF
ALLOWED 2% = 84.75 SQFT



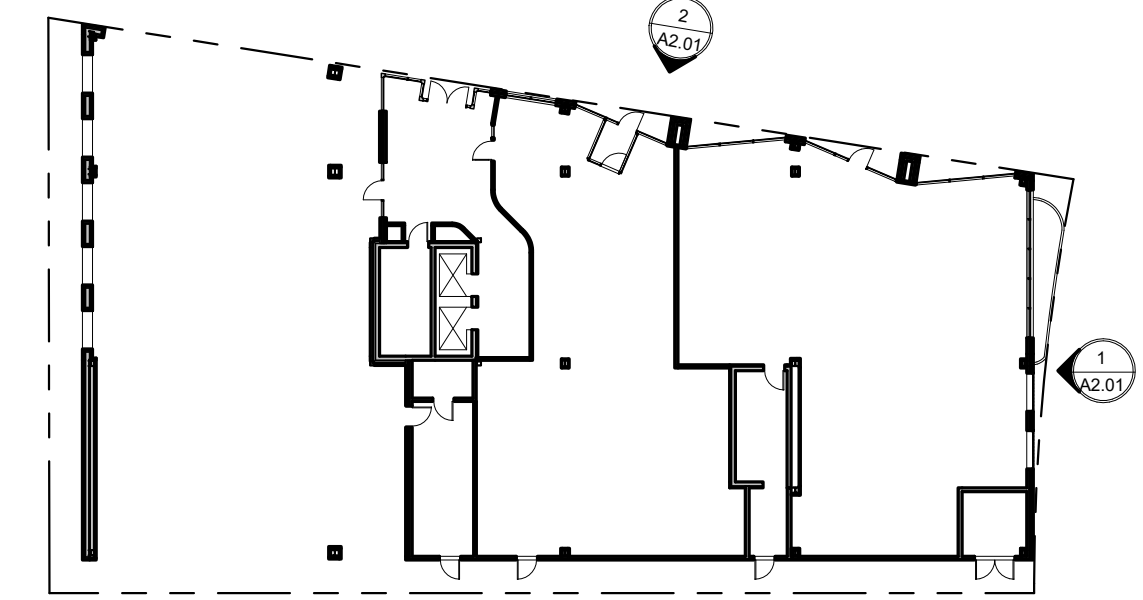
1 East Elevation
1/8" = 1'-0"

PRINCIPAL FACADE = 9,375 SF
ALLOWED 5% = 468.75 SQFT

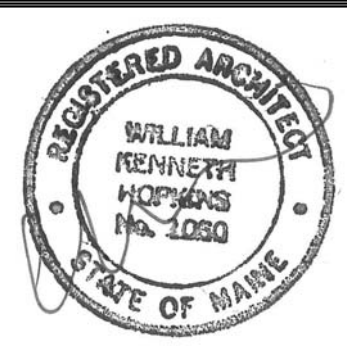
MAINE MEDIA = 103 SQFT
TILSON = 140 SQFT
3RD FLOOR = 56.25 SQFT
2ND FLOOR = 93.75 SQFT
BENKAY = 42 SQFT
1ST FLOOR = 33 SQFT



2 North Elevation
1/8" = 1'-0"



3 KEY PLAN
1" = 30'-0"



Prepared For:
16 Middle Street
Associates, LLC
Address
City, State

Consultant:

Architect:
ARCHETYPE
architects
48 Union Wharf Portland, Maine 04101
(207) 772-0022 ARCHETYPE@ARCHETYPEPA.COM

Project:

16 Middle Street
Portland, Maine

Revisions:

1 6/10/16 APPENDUM 1

Scale:

As indicated

Date:

June 3, 2016

Building Elevations

A2.01