

PANEL TP5H (TENANT ELECT CLOSET FLR 5) 480/277 3PH 4W 225 AMP BUS - MLO 42K AIC NEMA TYPE 1 (RECESSED)														
CKT #	LOAD DESCRIPTION	AT	P	CA	DF	DA	CKT #	LOAD DESCRIPTION	AT	P	CA	DF	DA	
1				2	0.70	1	2	LIGHTS: RMS 107 THRU 115 & OPEN SPACE ADJ TO 115	20	1		0.80	0	
3	45 KVA DTT	60	3	2	0.70	1	4	LIGHTS: RMS 82, 140 THRU 150, STAIRS & CORR.	20	1		0.80	0	
5				2	0.70	1	6	LIGHTS: RMS 118 THRU 139, ADJ SPACES & 144	20	1		0.80	0	
7				20	0.70	14	8				20	0.70	14	
9	AC UNIT INTERIOR ZONE (ROOF TOP)	25	3	20	0.70	14	10	AC UNIT NORTH ZONE (ROOF TOP)	25	3		20	0.70	14
11				20	0.70	14	12				20	0.70	14	
13	VAV1-2 & VAV1-4	20	2	8	1.00	8	14	AC UNIT SOUTH ZONE (ROOF TOP)	25	3		20	0.70	14
15				1.00	0		16				20	0.70	14	
17	VAV1-5	20	2	7	1.00	7	18				20	0.70	14	
19				1.00	0		20	VAV1-7	20	2		5	1.00	5
21	VAV1-6	20	2	8	1.00	8	22				1.00	0		
23				1.00	0		24	VAVA1-8 & VAV1-9	20	2		11	1.00	11
25	VAV1-10	20	2	7	1.00	7	26				1.00	0		
27				1.00	0		28	VAV1-11	20	2		5	1.00	5
29	SPARE	20	1				30				1.00	0		
31	SPARE	20	1				32	SPARE	20	1				0
33	SPARE	20	1				34	SPARE	20	1				0
35	SPARE	20	1				36	SPARE	20	1				0
37	SPARE	20	1				38	SPARE	20	1				0
39	SPARE	20	1				40	SPARE	20	1				0
41	SPARE	20	1				42	SPARE	20	1				0

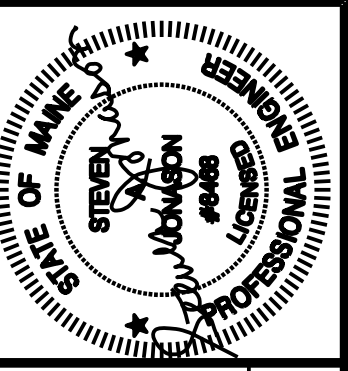
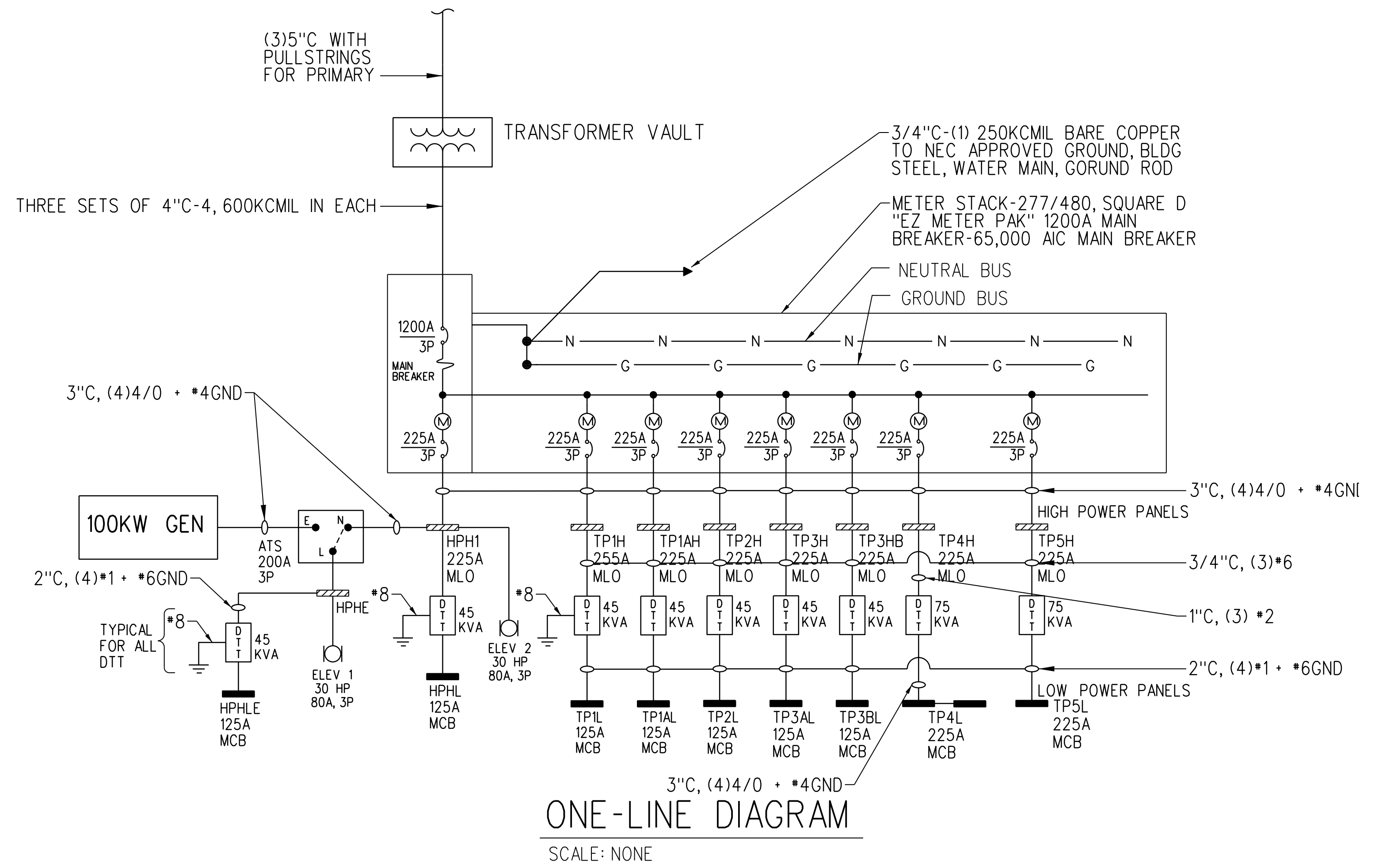
PANEL TP5L (TENANT ELEC CLOSET FLR 5) SECTION 1 120/208 3PH 4W 225 AMP BUS - MCB 42K AIC NEMA TYPE 1 (RECESSED)													
CKT #	LOAD DESCRIPTION	AT	P	CA	DF	DA	CKT #	LOAD DESCRIPTION	AT	P	CA	DF	DA
1	RECEPTS: OFFICES 107 & 108	20	1	12	0.50	6	2	RECEPTS: OFFICES 109 & 110	20	1	12	0.50	6
3	RECEPTS: OFFICES 111 & 112	20	1	12	0.50	6	4	RECEPTS: OFFICES 113 & 114	20	1	12	0.50	6
5	RECEPTS: OFFICE 115	20	1	5	0.50	2	6	RECEPTS: CORR/GEN USE	20	1	8	0.50	4
7	RECEPTS: DECK	20	1	5	0.50	2	8	RECEPTS: CONF RM 227	20	1	9	0.50	5
9	RECEPTS: CONF RM 82	20	1	11	0.50	6	10	(3) EF-T & RECEPT AT ELEC CLOSET	20	1	2	0.50	1
11	DEDICATED RECEPT #1: IT CLOSET	20	1	2	0.50	1	12	DEDICATED RECEPT #2: IT CLOSET	20	1	2	0.50	1
13	RECEPTS: RADIO RM 142	20	1	6	0.50	3	14	RECEPTS: TV RM 143	20	1	6	0.50	3
15	RECEPTS: GEN USE & EF-T AT JANITOR	20	1	8	0.50	4	16				1.00	0	
17	REFRIGERATOR: BREAK RM	20	1	12	1.00	12	18	WH		2		1.00	0
19	DISHWASHER: BREAK RM	20	1	12	0.50	6	20	COUNTER RECEPTS: BREAK RM	20	1	3	0.50	2
21	WATER FILTRATION SYSTEM: BREAK RM	20	1		1.00	0	22	RECEPTS: GEN USE BREAK RM	20	1	5	0.50	2
23	RECEPTS: OFFICE 118	20	1	6	0.50	3	24	RECEPTS: OFFICES 119 & 120	20	1	12	0.50	6
25	RECEPTS: OFFICES 121 & 122	20	1	12	0.50	6	26	RECEPTS: OFFICES 123 & 124	20	1	12	0.50	6
27	FD/SD	20	1	2	1.00	2	28	RECEPTS: OFFICES 125 & 127	20	1	9	0.50	5
29	RECEPTS: OFFICES 130 & 131	20	1	9	0.50	5	30	RECEPTS: OFFICES 126 & 128	20	1	9	0.50	5
31	RECEPTS: OFFICES 129 & 132	20	1	9	0.50	5	32	RECEPTS: OFFICES 133 & 134	20	1	9	0.50	5
33	RECEPTS: OFFICES 137 & 139	20	1	9	0.50	5	34	RECEPTS: OFFICES 135, 136 & 138	20	1	14	0.50	7
35	RECEPTS: GEN USE AREA ADJ TO OFFICE 107	20	1	8	0.50	4	36				13	1.00	13
37	SCU-2	30	2	15	1.00	15	38	SCU-1	20	2		1.00	0
39				1.00	0		40				13	1.00	13
41	SPARE	20	1				42	SCU-IT	20	2		1.00	0

ALL LOADS TO 480V PANEL VIA DTT

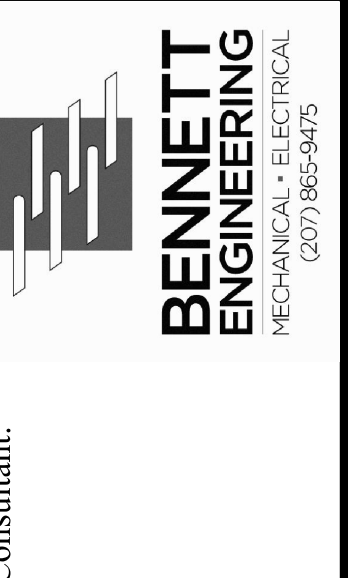
PROVIDE FEED THRU LUGS TO SECTION 2

AT - Amp Trip
P - Poles
A - Amps
CA - Connected Amperes
DF - Demand Factor (1 - -1)
DA - Demand Amperes
MLO - Main Lug Only
MCB - Main Circuit Breaker

PANEL TP5L (TENANT ELEC CLOSET FLR 5) SECTION 2 120/208 3PH 4W 225 AMP BUS - MCB 42K AIC NEMA TYPE 1 (RECESSED)													
CKT #	LOAD DESCRIPTION	AT	P	CA	DF	DA	CKT #	LOAD DESCRIPTION	AT	P	CA	DF	DA
43						0	44						0
45						0	46						0
47						0	48						0
49						0	50						0
51						0	52						0
53						0	54						0
55						0	56						0
57						0	58						0
59						0	60						0
61						0	62						0
63						0	64						0
65						0	66						0
67						0	68						0
69						0	70						0
71						0	72						0
73						0	74						0
75						0	76						0
77						0	78						0
79						0	80						0
81						0	82						0
83						0	84						0



Prepared For: **Archetype**



Consultant: **ARCHETYPE architects**
48 Union Wharf Portland, Maine 04101
(207) 772-6022 ARCHETYPE@ARCHTYPEPA.COM

Project: **16 MIDDLE STREET OFFICE BUILDING**
MIDDLE STREET PORTLAND, MAINE

Revisions: **ISSUED CONSTRUCTION**

Date: **13 APR 2017**
Scale: **1/8" = 1'-0" U.N.O.**
Maine Media: **PANEL SCHEDULES & ONE-LINE DIAGRAM**

E3.02