



Prepared For:
**16 Middle Street
 Associates, LLC**

Consultant:

ARCHITYPE
 architects
 48 Union Wharf Portland, Maine 04101
 (207) 772-6022 ARCHITYPE@ARCHITYPEPA.COM

Architect:

Project:
**16 Middle Street
 Condominium**
 16 Middle Street
 Portland, Maine

Revisions:

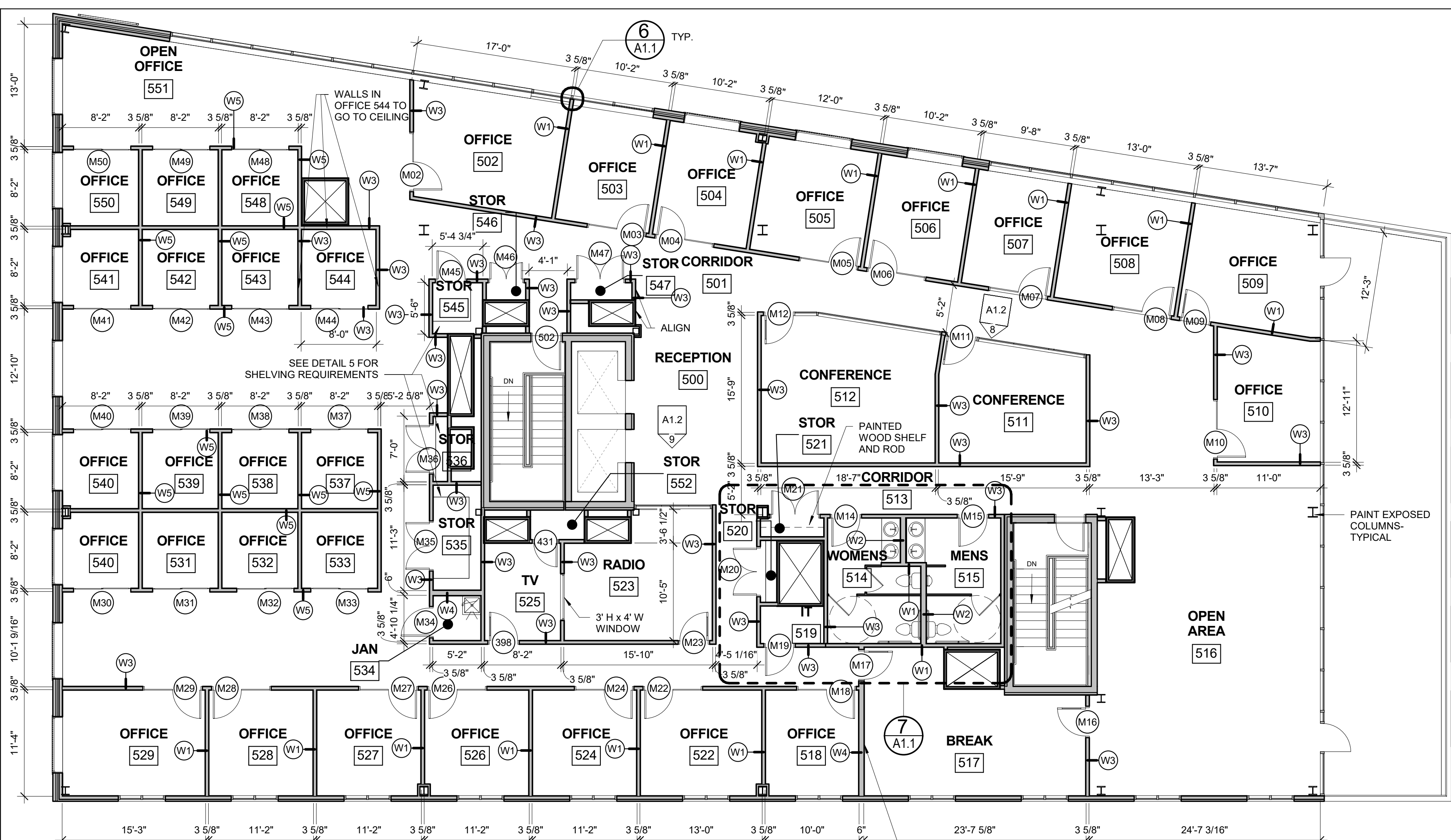
Date: **MAR. 29, 2017**
 Scale: **As indicated**
**MAINE MEDIA FIT UP
 PLAN**

A1.1

MAINE MEDIA DOOR SCHEDULE

DOOR No.	LOCATION	DOOR				FRAME		Hardware	LABEL	REMARKS
		W	H	THCK	TYPE	THRESHOL D	MATL			
M02	OFFICE	6'-0"	7'-0"	1 3/4"	1	WOOD/GLASS	POLY	MTL	PTD	OFFICE
M03	OFFICE	6'-0"	7'-0"	1 3/4"	1	WOOD/GLASS	POLY	MTL	PTD	OFFICE
M04	OFFICE	6'-0"	7'-0"	1 3/4"	1	WOOD/GLASS	POLY	MTL	PTD	OFFICE
M05	OFFICE	6'-0"	7'-0"	1 3/4"	1	WOOD/GLASS	POLY	MTL	PTD	OFFICE
M06	OFFICE	6'-0"	7'-0"	1 3/4"	1	WOOD/GLASS	POLY	MTL	PTD	OFFICE
M07	OFFICE	6'-0"	7'-0"	1 3/4"	1	WOOD/GLASS	POLY	MTL	PTD	OFFICE
M08	OFFICE	6'-0"	7'-0"	1 3/4"	1	WOOD/GLASS	POLY	MTL	PTD	OFFICE
M09	OFFICE	3'-0"	7'-0"	1 3/4"	4	WOOD/GLASS	POLY	MTL	PTD	OFFICE
M10	OFFICE	6'-0"	7'-0"	1 3/4"	1	WOOD/GLASS	POLY	MTL	PTD	OFFICE
M11	CONFERENCE	3'-0"	8'-0"	1 3/4"	4	GLASS	ALUM	STOREFRONT	BRUSHED	PASSAGE
M12	CONFERENCE	3'-0"	8'-0"	1 3/4"	4	GLASS	ALUM	STOREFRONT	BRUSHED	PASSAGE
M14	WOMENS	3'-0"	7'-0"	1 3/4"	2	SC WOOD	POLY	MTL	PTD	PASSAGE
M15	MENS	3'-0"	7'-0"	1 3/4"	2	SC WOOD	POLY	MTL	PTD	PASSAGE
M16	BREAK	3'-0"	7'-0"	1 3/4"	4	WOOD/GLASS	POLY	MTL	PTD	PASSAGE
M17	BREAK	3'-0"	7'-0"	1 3/4"	4	WOOD/GLASS	POLY	MTL	PTD	PASSAGE
M18	OFFICE	6'-0"	7'-0"	1 3/4"	1	WOOD/GLASS	POLY	MTL	PTD	OFFICE
M19	IT	3'-0"	7'-0"	1 3/4"	2	SC WOOD	POLY	MTL	PTD	STOREROOM
M20	STOR	5'-0"	7'-0"	1 3/4"	5	SC WOOD	POLY	MTL	PTD	PASSAGE
M21	STOR	5'-0"	7'-0"	1 3/4"	1	SC WOOD	POLY	MTL	PTD	OFFICE
M22	OFFICE	6'-0"	7'-0"	1 3/4"	1	WOOD/GLASS	POLY	MTL	PTD	PASSAGE
M23	RADIO	3'-0"	7'-0"	1 3/4"	4	WOOD/GLASS	POLY	MTL	PTD	OFFICE
M24	OFFICE	6'-0"	7'-0"	1 3/4"	1	WOOD/GLASS	POLY	MTL	PTD	OFFICE
M26	OFFICE	6'-0"	7'-0"	1 3/4"	1	WOOD/GLASS	POLY	MTL	PTD	OFFICE
M27	OFFICE	6'-0"	7'-0"	1 3/4"	1	WOOD/GLASS	POLY	MTL	PTD	OFFICE
M28	OFFICE	6'-0"	7'-0"	1 3/4"	1	WOOD/GLASS	POLY	MTL	PTD	OFFICE
M29	OFFICE	6'-0"	7'-0"	1 3/4"	1	WOOD/GLASS	POLY	MTL	PTD	OFFICE
M30	OFFICE	6'-0"	7'-0"	1 1/2"	3	WOOD/GLASS	POLY	MTL	PTD	OFFICE
M31	OFFICE	6'-0"	7'-0"	1 1/2"	3	WOOD/GLASS	POLY	MTL	PTD	OFFICE
M32	OFFICE	6'-0"	7'-0"	1 1/2"	3	WOOD/GLASS	POLY	MTL	PTD	OFFICE
M33	OFFICE	6'-0"	7'-0"	1 1/2"	3	WOOD/GLASS	POLY	MTL	PTD	OFFICE
M34	JAN	3'-0"	7'-0"	1 3/4"	2	SC WOOD	POLY	MTL	PTD	PASSAGE
M35	STOR	5'-0"	7'-0"	1 3/4"	5	SC WOOD	POLY	MTL	PTD	PASSAGE
M36	STOR	5'-0"	7'-0"	1 3/4"	5	SC WOOD	POLY	MTL	PTD	PASSAGE
M37	OFFICE	6'-0"	7'-0"	1 1/2"	3	WOOD/GLASS	POLY	MTL	PTD	OFFICE
M38	OFFICE	6'-0"	7'-0"	1 1/2"	3	WOOD/GLASS	POLY	MTL	PTD	OFFICE
M39	OFFICE	6'-0"	7'-0"	1 1/2"	3	WOOD/GLASS	POLY	MTL	PTD	OFFICE
M40	OFFICE	6'-0"	7'-0"	1 1/2"	3	WOOD/GLASS	POLY	MTL	PTD	OFFICE
M41	OFFICE	6'-0"	7'-0"	1 1/2"	3	WOOD/GLASS	POLY	MTL	PTD	OFFICE
M42	OFFICE	6'-0"	7'-0"	1 1/2"	3	WOOD/GLASS	POLY	MTL	PTD	OFFICE
M43	OFFICE	6'-0"	7'-0"	1 1/2"	3	WOOD/GLASS	POLY	MTL	PTD	OFFICE
M44	OFFICE	6'-0"	7'-0"	1 1/2"	3	WOOD/GLASS	POLY	MTL	PTD	OFFICE
M45	STOR	3'-0"	7'-0"	1 3/4"	2	SC WOOD	POLY	MTL	PTD	OFFICE
M46	STOR	3'-0"	7'-0"	1 3/4"	5	SC WOOD	POLY	MTL	PTD	PASSAGE
M47	STOR	5'-0"	7'-0"	1 3/4"	5	SC WOOD	POLY	MTL	PTD	PASSAGE
M48	OFFICE	6'-0"	7'-0"	1 1/2"	3	WOOD/GLASS	POLY	MTL	PTD	OFFICE
M49	OFFICE	6'-0"	7'-0"	1 1/2"	3	WOOD/GLASS	POLY	MTL	PTD	OFFICE
M50	OFFICE	6'-0"	7'-0"	1 1/2"	3	WOOD/GLASS	POLY	MTL	PTD	OFFICE

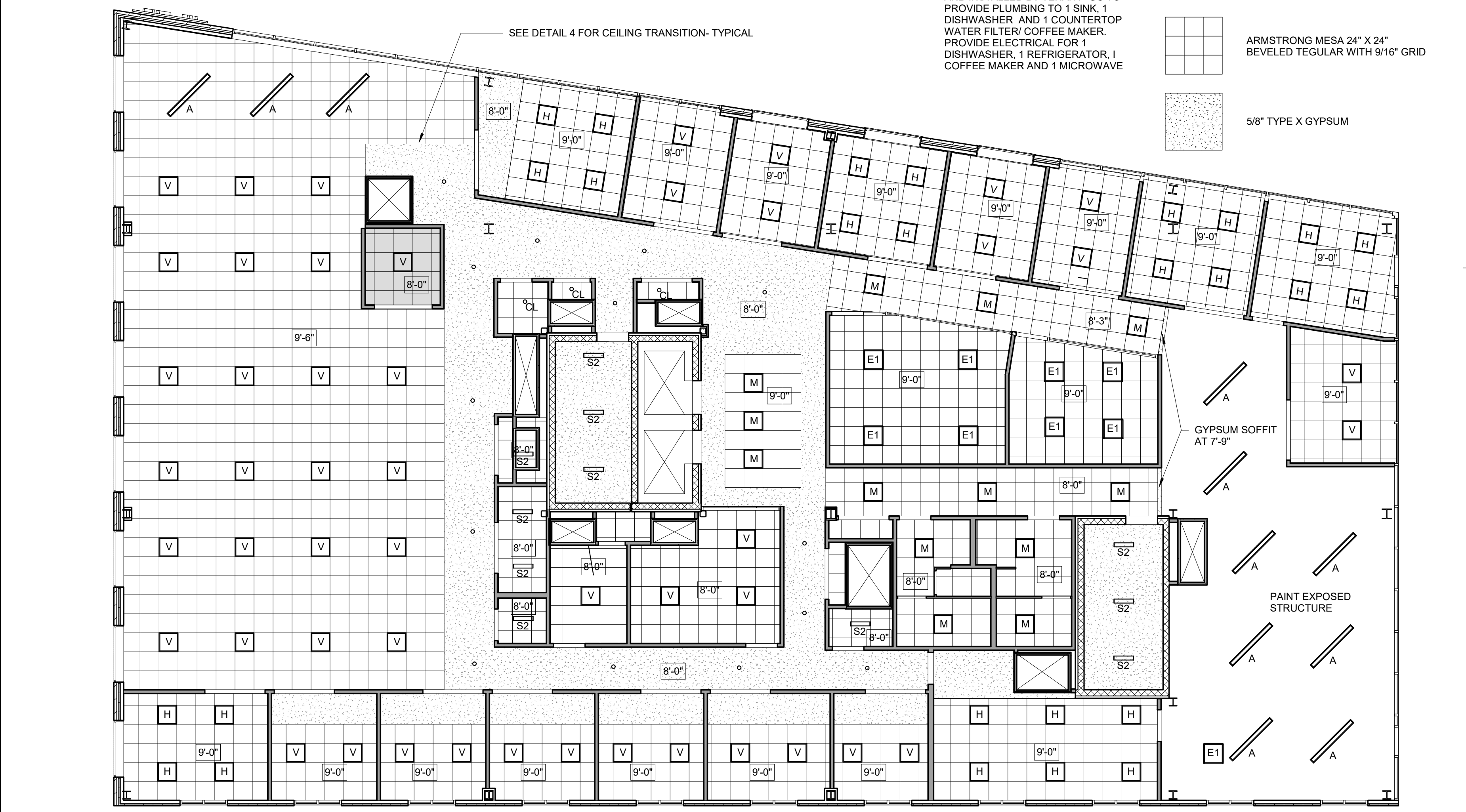
NOTE: DOORS TO BE ON CONCRETE FLOOR WITHOUT THRESHOLDS- ONLY UNDERCUT 1/4"
 WOOD DOORS TO BE PREMIUM GRADE PLAIN SLICED BIRCH BOOK AND RUNNING MATCH WITH CLEAR POLY FINISH



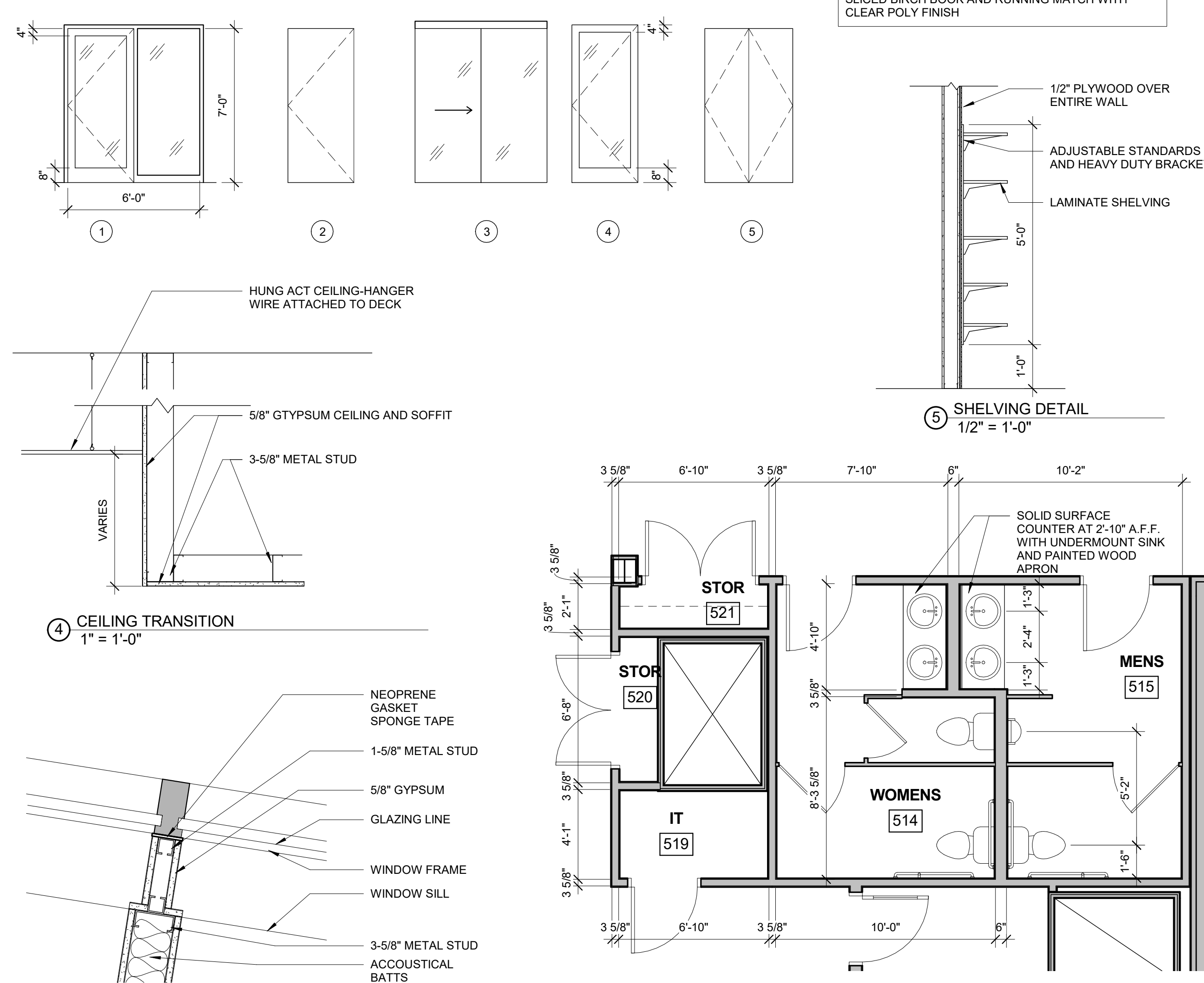
1 MAINE MEDIA FLOOR PLAN
 1/8" = 1'-0"

BREAK ROOM CABINETS, COUNTERS AND APPLIANCES TO BE PROVIDED AND INSTALLED BY TENANT. GC TO PROVIDE PLUMBING TO 1 SINK, 1 DISHWASHER AND 1 COUNTERTOP WATER FILTER/ COFFEE MAKER. PROVIDE ELECTRICAL FOR 1 DISHWASHER, 1 REFRIGERATOR, 1 COFFEE MAKER AND 1 MICROWAVE

ARMSTRONG MESA 24" X 24" BEVELED TEGULAR WITH 9/16" GRID
 5/8" TYPE X GYPSUM



2 5TH FLOOR RCP
 1/8" = 1'-0"



4 CEILING TRANSITION
 1" = 1'-0"

6 DETAIL AT WALL/WINDOW
 1 1/2" = 1'-0"

7 MAINE MEDIA-ENLARGED BATHROOM
 1/4" = 1'-0"