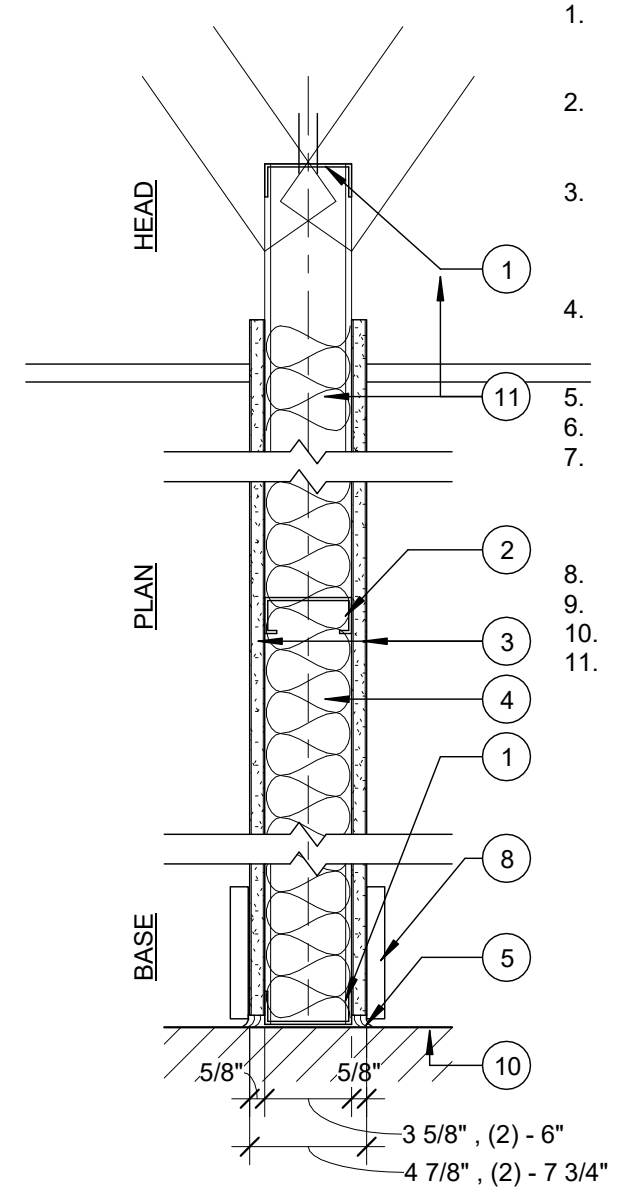
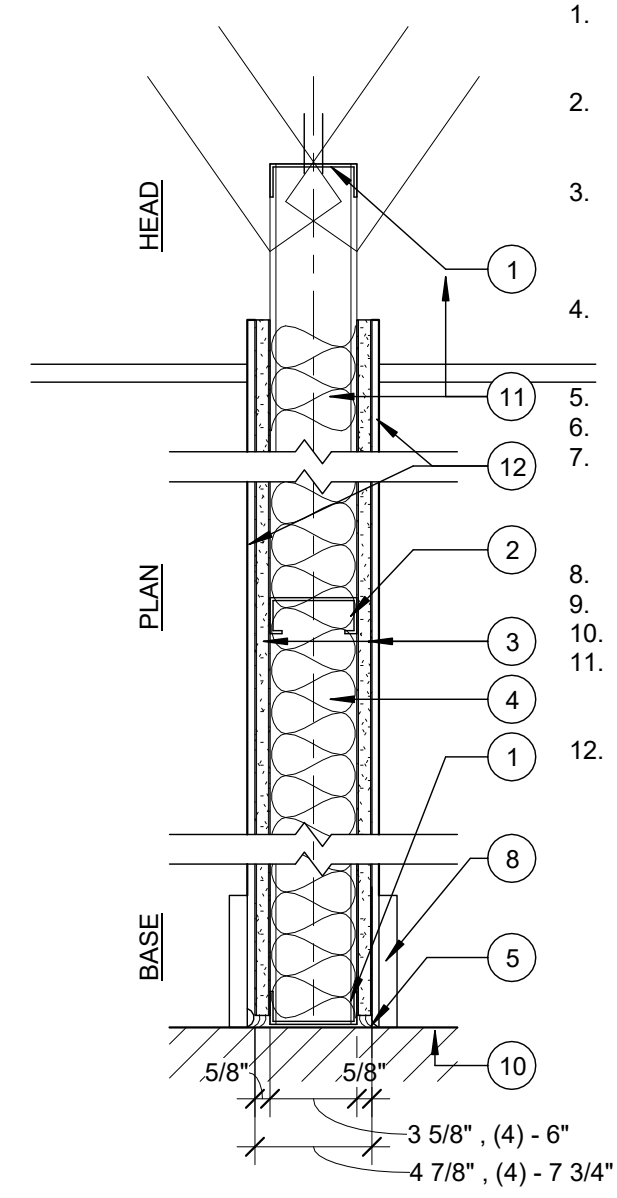


W1	W2
3 5/8"	6"



1. CONT. METAL FLOOR AND CEILING RUNNER - CHANNEL SHAPED 3 5/8" 25 MSG STEEL WITH 1 1/4" LONG LEGS FASTENERS @ 2'-0" O.C. MAX. WITHIN 1" OF ENDS
2. STEEL STUDS - CHANNEL SHAPED 25 MSG STEEL 3 5/8" STUDS SPACED MAX. 24" O.C. RUN TO 2" ABOVE FINISHED CEILING (USE 6" STUD AT W2 WALLS)
3. GYPSUM BOARD - (1) LAYER 5/8" GYP. BD. EACH SIDE TO 12" ABOVE CEILING, PAPER SURFACED, APPLIED PERPENDICULAR TO FRAMING WITH 1" TYPE S STEEL SCREWS SPACED 8" O.C., SEE NOTES FOR GYP. BD. TYPE
4. SOUND ATTENUATION BATT - FIBERGLASS BATT WITH UL CLASS AS TO SURFACE BURNING CHARACTERISTICS AND OR FIRE RESISTANCE REQUIRED
5. SEALANT - ACOUSTIC SEALANT BOTH SIDES.
6. BLOCKING - (NOT SHOWN) WOOD BLOCKING AS NEEDED
7. TAPE AND COMPOUND - (NOT SHOWN) VINYL, DRY OR PREMIXED JOINT COMPOUND, APPLIED IN TWO COATS TO JOISTS AND SCREW HEADS, PAPER TAPE, 2 IN. WIDE, EMBEDDED IN FIRST LAYER OF COMPOUND OVER ALL JOINTS.
8. BASE - SEE FINISH SCHEDULE
9. UNDERSIDE OF STRUCTURE
10. TOP OF STRUCTURE
11. SOUND ATTENUATION BATT - FIBERGLASS BATT WITH UL CLASS AS TO SURFACE BURNING CHARACTERISTICS AND OR FIRE RESISTANCE REQUIRED.

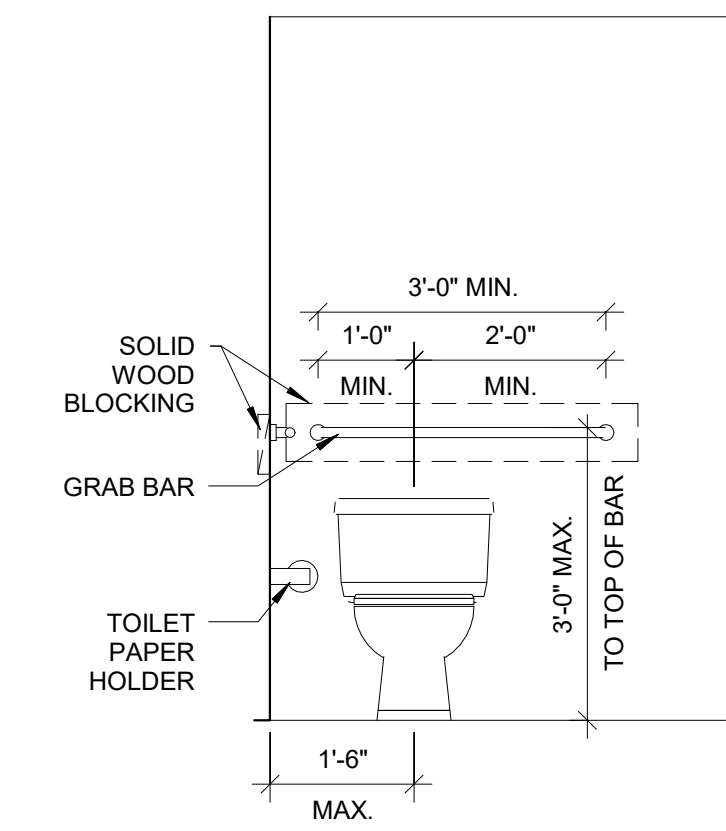
W3	W4
3 5/8"	6"



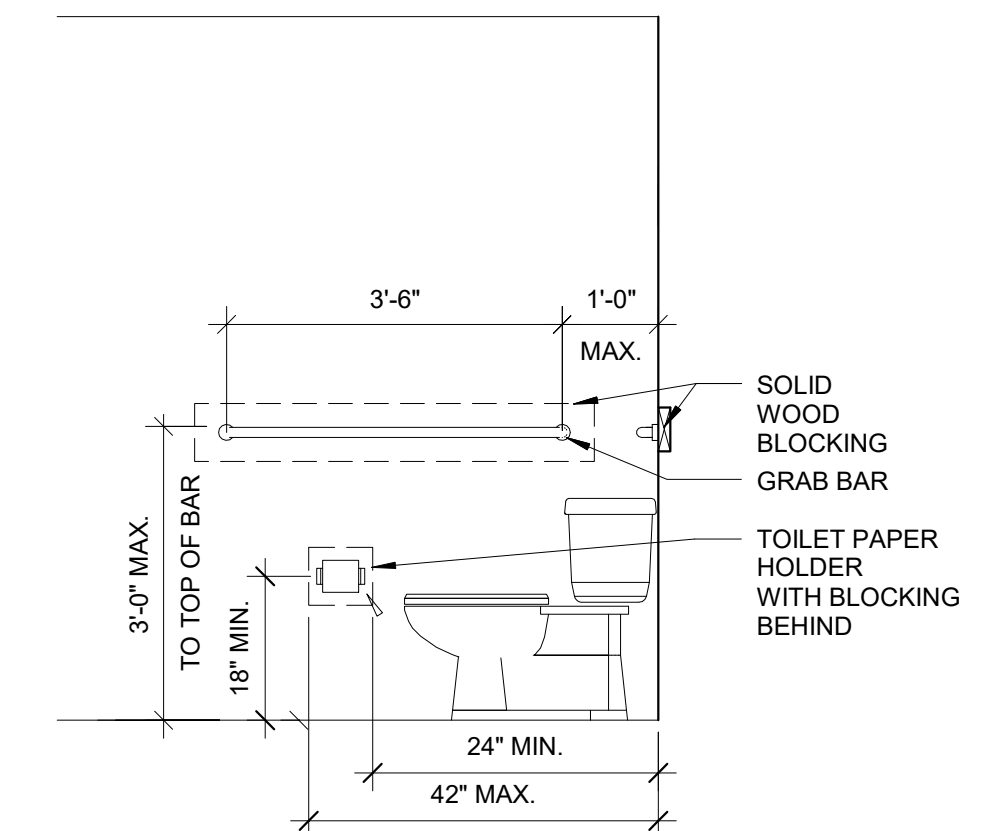
1. CONT. METAL FLOOR AND CEILING RUNNER - CHANNEL SHAPED 3 5/8" 25 MSG STEEL WITH 1 1/4" LONG LEGS FASTENERS @ 2'-0" O.C. MAX. WITHIN 1" OF ENDS
2. STEEL STUDS - CHANNEL SHAPED 25 MSG STEEL 3 5/8" STUDS SPACED MAX. 24" O.C. RUN TO 2" ABOVE FINISHED CEILING (USE 6" STUD AT W2 WALLS)
3. GYPSUM BOARD - (1) LAYER 5/8" GYP. BD. EACH SIDE TO 12" ABOVE CEILING, PAPER SURFACED, APPLIED PERPENDICULAR TO FRAMING WITH 1" TYPE S STEEL SCREWS SPACED 8" O.C., SEE NOTES FOR GYP. BD. TYPE
4. SOUND ATTENUATION BATT - FIBERGLASS BATT WITH UL CLASS AS TO SURFACE BURNING CHARACTERISTICS AND OR FIRE RESISTANCE REQUIRED
5. SEALANT - ACOUSTIC SEALANT BOTH SIDES.
6. BLOCKING - (NOT SHOWN) WOOD BLOCKING AS NEEDED
7. TAPE AND COMPOUND - (NOT SHOWN) VINYL, DRY OR PREMIXED JOINT COMPOUND, APPLIED IN TWO COATS TO JOISTS AND SCREW HEADS, PAPER TAPE, 2 IN. WIDE, EMBEDDED IN FIRST LAYER OF COMPOUND OVER ALL JOINTS.
8. BASE - SEE FINISH SCHEDULE
9. UNDERSIDE OF STRUCTURE
10. TOP OF STRUCTURE
11. SOUND ATTENUATION BATT - FIBERGLASS BATT WITH UL CLASS AS TO SURFACE BURNING CHARACTERISTICS AND OR FIRE RESISTANCE REQUIRED.
12. FRP PANEL-ATTACH PER MANUFACTURERS RECOMMENDATION

WALL TYPES

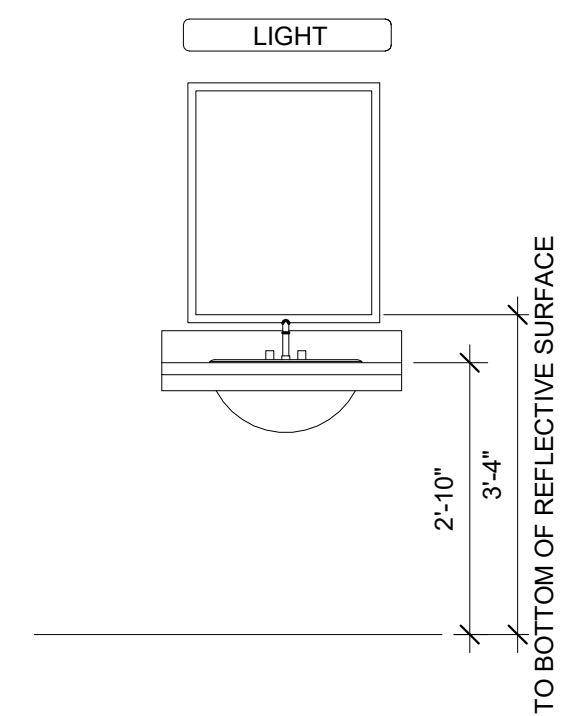
3 | ADA WC BACK ELEVATION
1/2" = 1'-0"



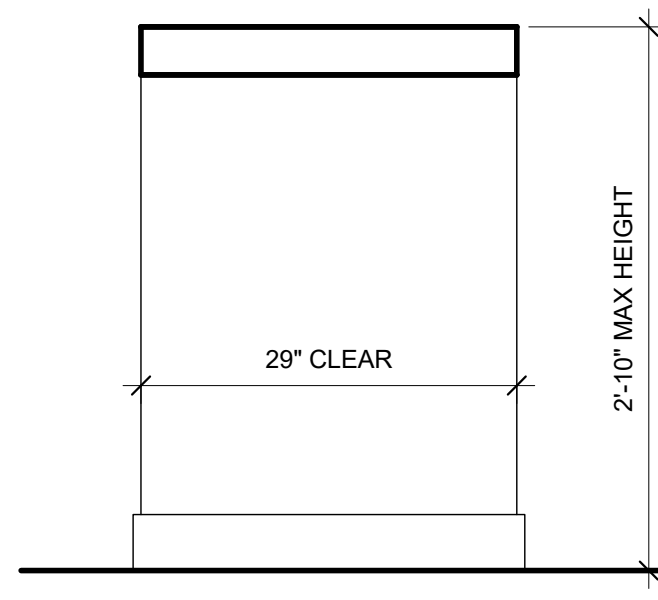
4 | TYPICAL ADA ELEVATION
1/2" = 1'-0"



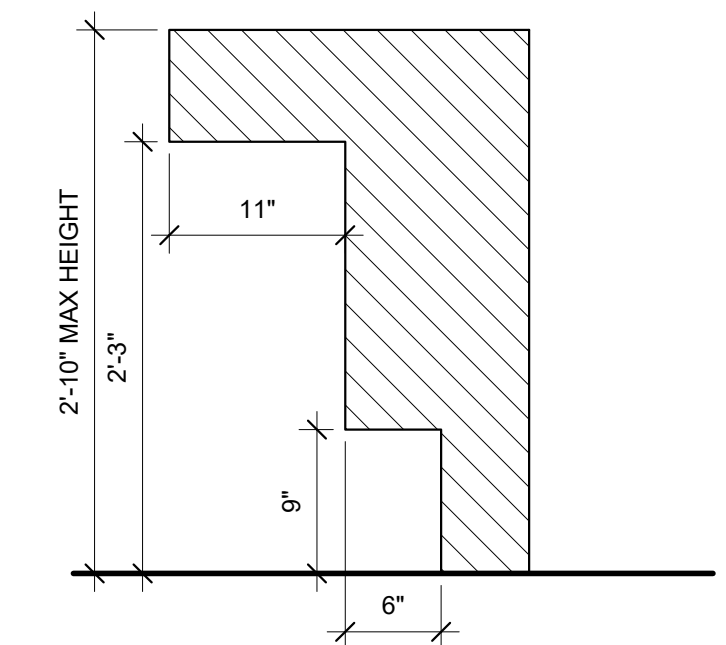
5 | ADA LAV ELEVATION
1/2" = 1'-0"



6 | ACCESSIBLE SEATING SKETCH
1" = 1'-0"

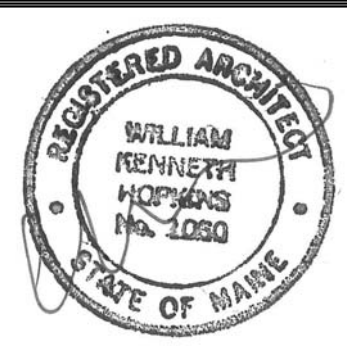


7 | ACCESSIBLE BAR SKETCH
1" = 1'-0"



GENERAL NOTE: 5% OF BAR AREA, OR MIN. OF 2'6", SHALL PROVIDE ADA ACCESSIBILITY. MIN. 5% OF SEATING AREA SHALL BE ACCESSIBLE. (INTERIOR AND EXTERIOR)

INTERIOR DETAILS



Prepared For:
16 Middle Street Associates, LLC

Consultant:
ARCHITYPE architects
48 Union Wharf Portland, Maine 04101
(207) 772-6022 ARCHITYPE@ARCHITYPEPA.COM

Project:
16 Middle Street Maine Media
16 Middle Street Portland, Maine

Date: **APRIL 20, 2017**
Scale: **As indicated**
BENKAY WALL TYPES

A1.11