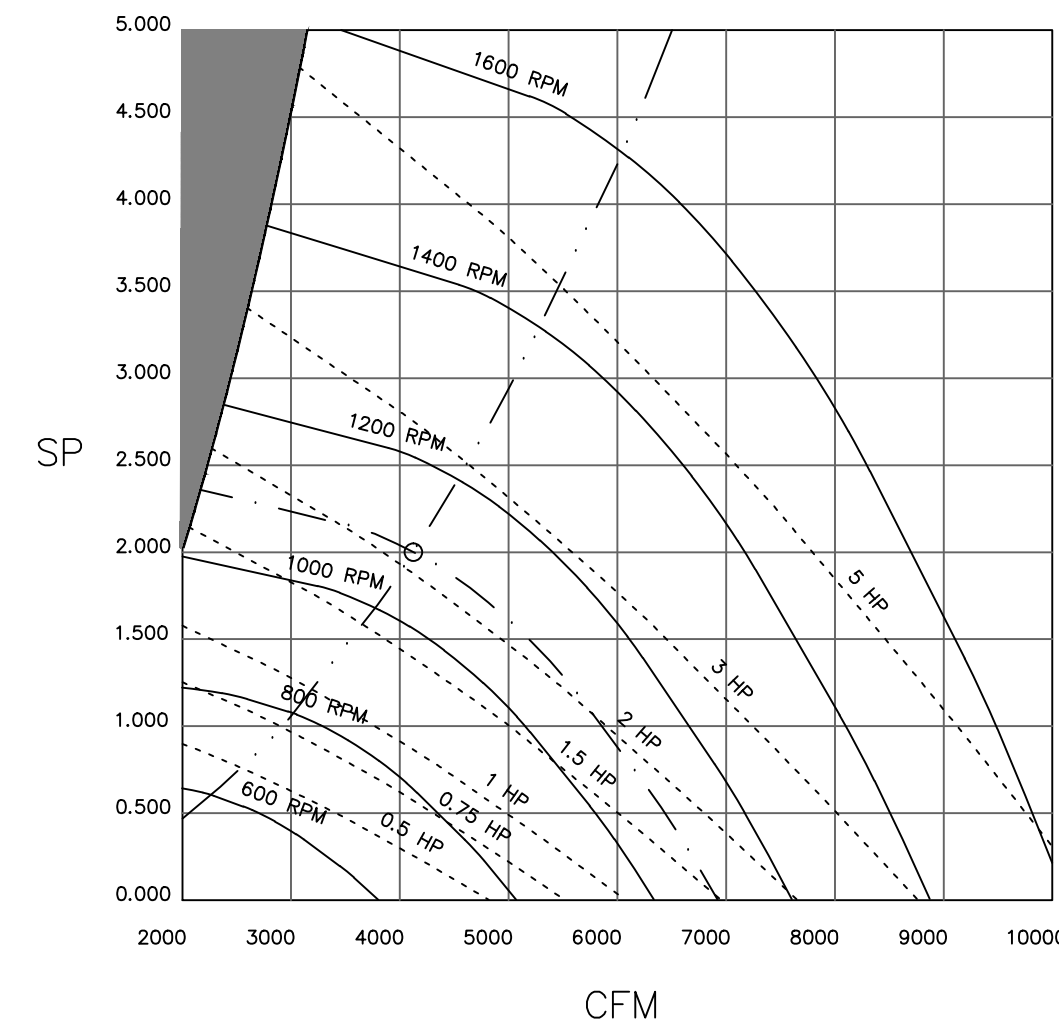


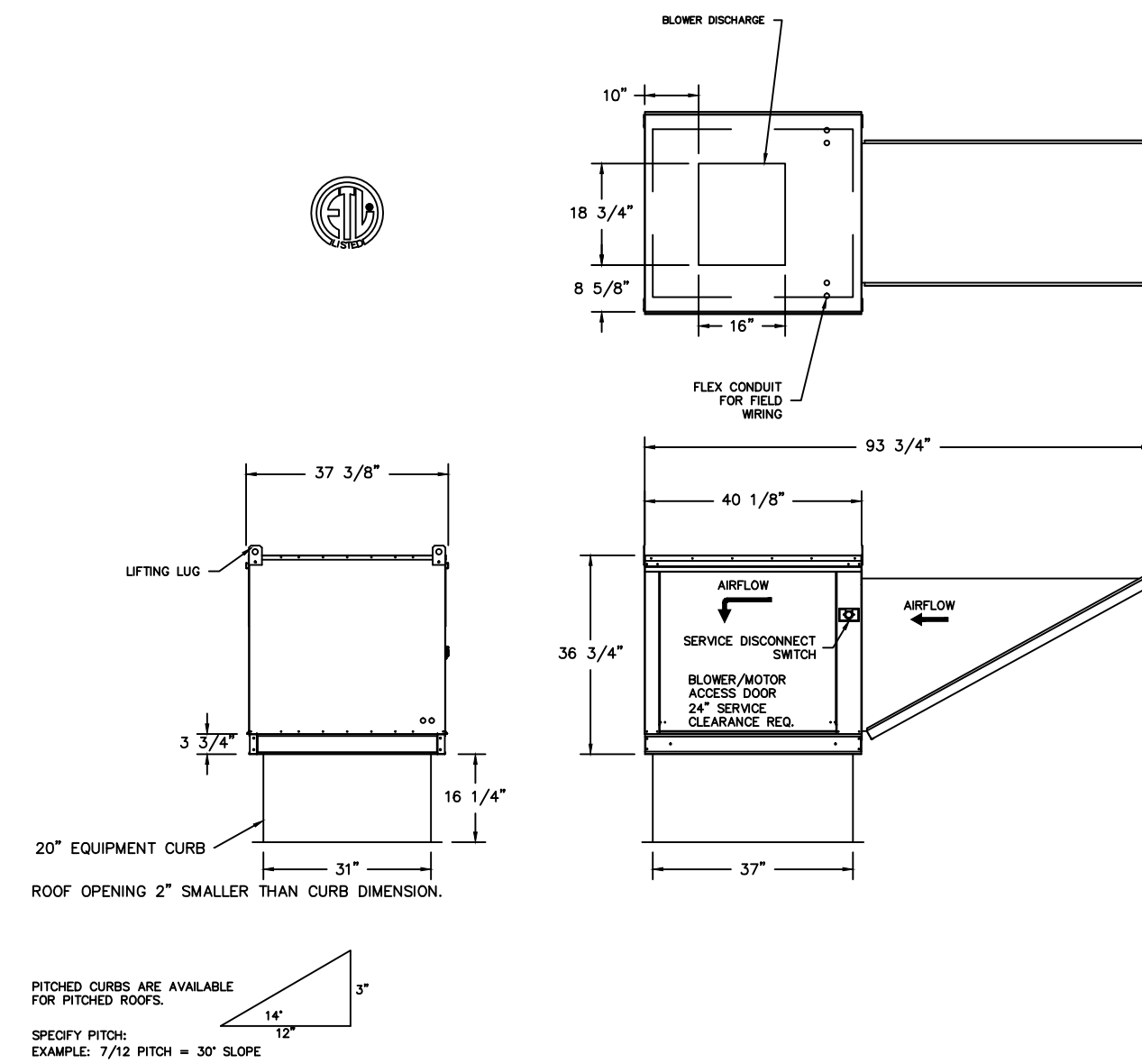
FAN#1 - EXHAUST PERFORMANCE CURVES.

4125 CFM, 2 SP @ 1092 RPM and 2.298 BHP at 243 feet and 70 deg F
 * Please note that these curves were adjusted for job specific temperature and altitude.



CAPTIVEAIRE
 JOB# Benkey
 LOCATION Lewiston, ME.
 DATE 1/17/2017 JOB # 2890376
 DWG # 6 DRAWN BY BFC-21
 REV. SCALE 3/8" = 1'-0"

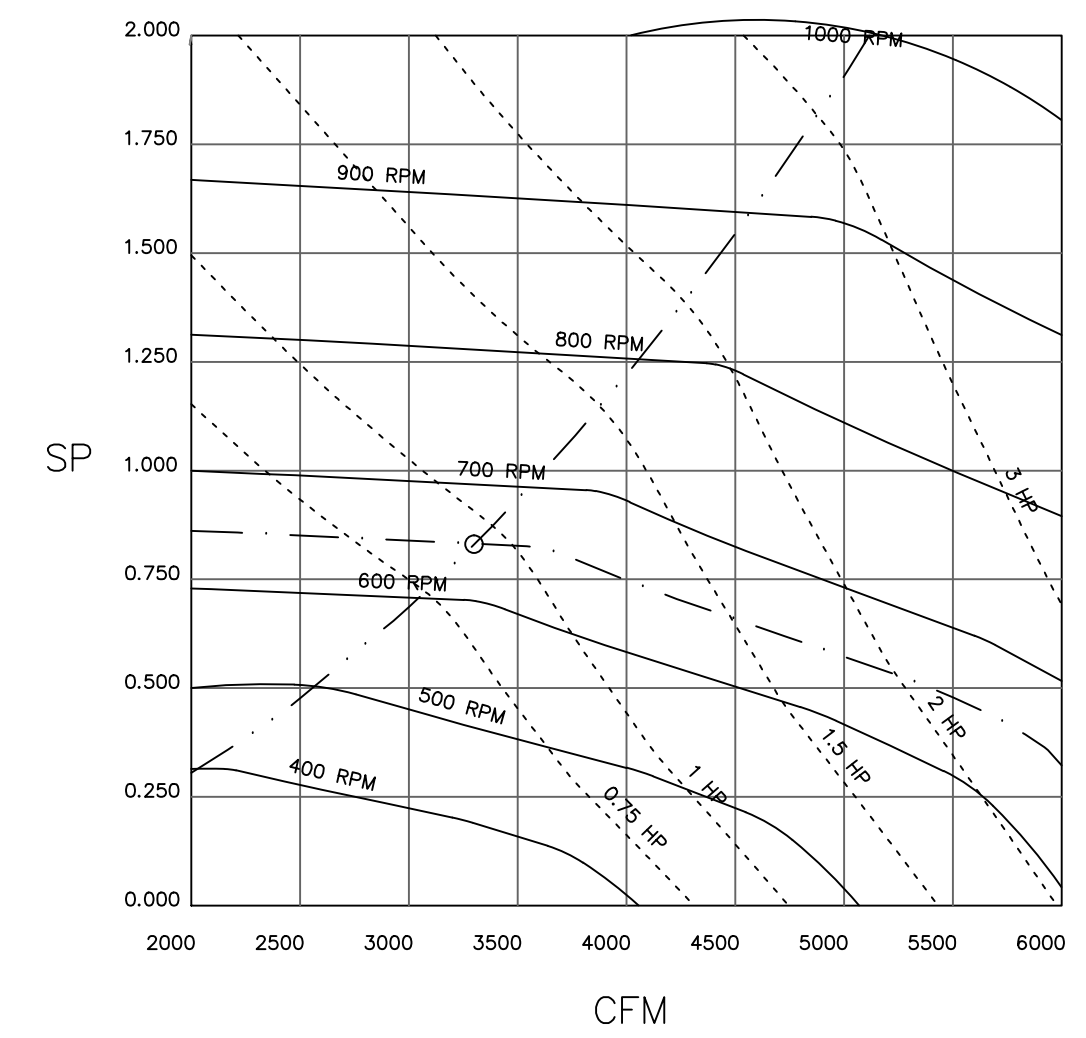
- FAN #2 A2-G15 - SUPPLY FAN
 1. UNTEMPERED SUPPLY UNIT WITH 15" BLOWER IN SIZE #2 HOUSING
 2. INTAKE HOOD WITH EZ FILTERS
 3. DOWN DISCHARGE - AIR FLOW RIGHT -> LEFT
 4. FULL COATING FOR UNTEMPERED FANS FOR SHIPPING
 5. 3 YEAR EXTENDED WARRANTY FOR FAN MOTOR. PARTS ONLY; DOES NOT INCLUDE LABOR.
 6. EXTRA SET OF V-BELTS. ONLY TO BE ORDERED AS FAN OPTION AT TIME FAN IS ORDERED.
 7. GRAVITY BACK DRAFT DAMPER 22" X 24" - STANDARD GALVANIZED CONSTRUCTION, 1 1/4" REAR FLANGE, FOR SIZE 2 UNTEMPERED FAN HOUSING (5182)



CAPTIVEAIRE
 JOB# Benkey
 LOCATION Lewiston, ME.
 DATE 1/17/2017 JOB # 2890376
 DWG # 7 DRAWN BY BFC-21
 REV. SCALE 3/8" = 1'-0"

FAN#2 - SUPPLY PERFORMANCE CURVES.

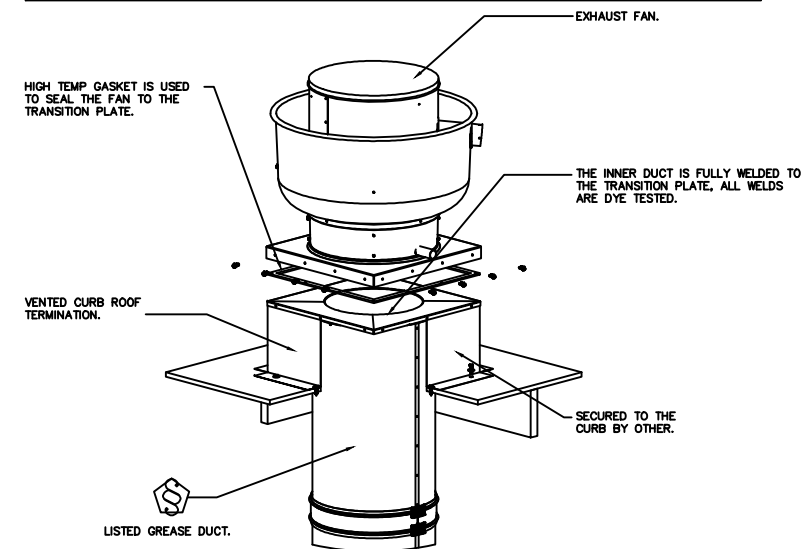
3300 CFM, 0.83 SP @ 651 RPM and 0.934 BHP at 243 feet and 70 deg F
 * Please note that these curves were adjusted for job specific temperature and altitude.



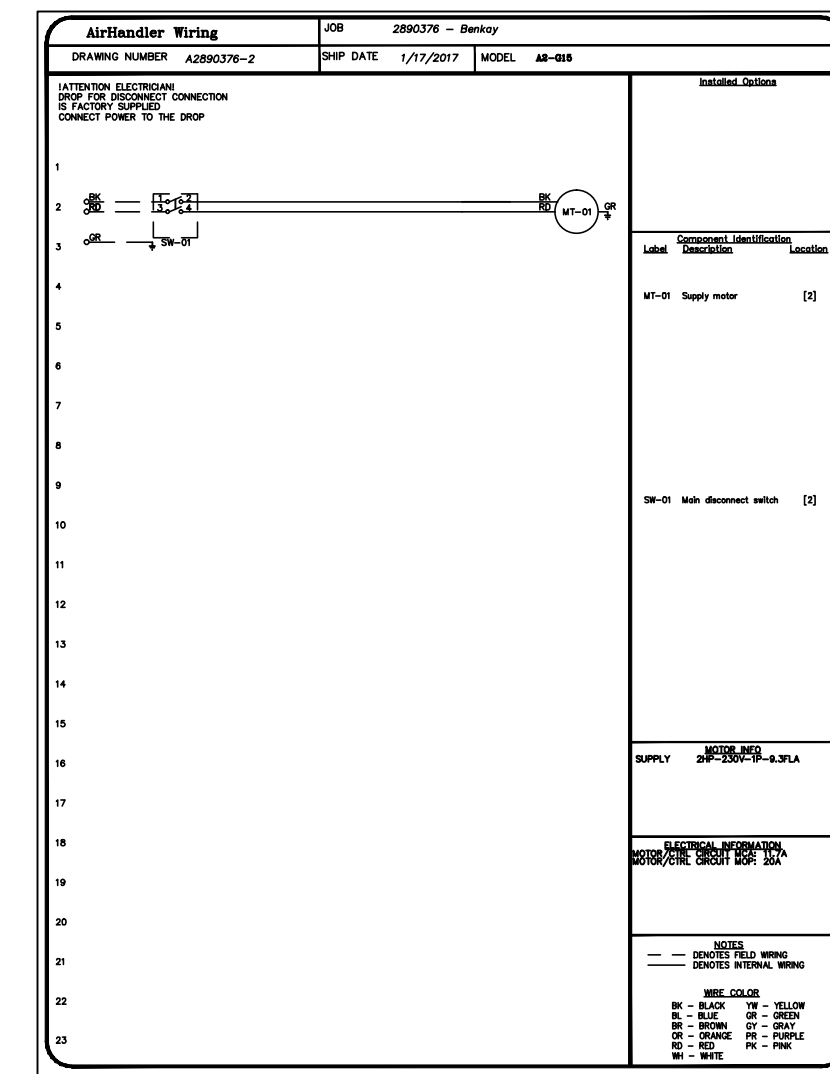
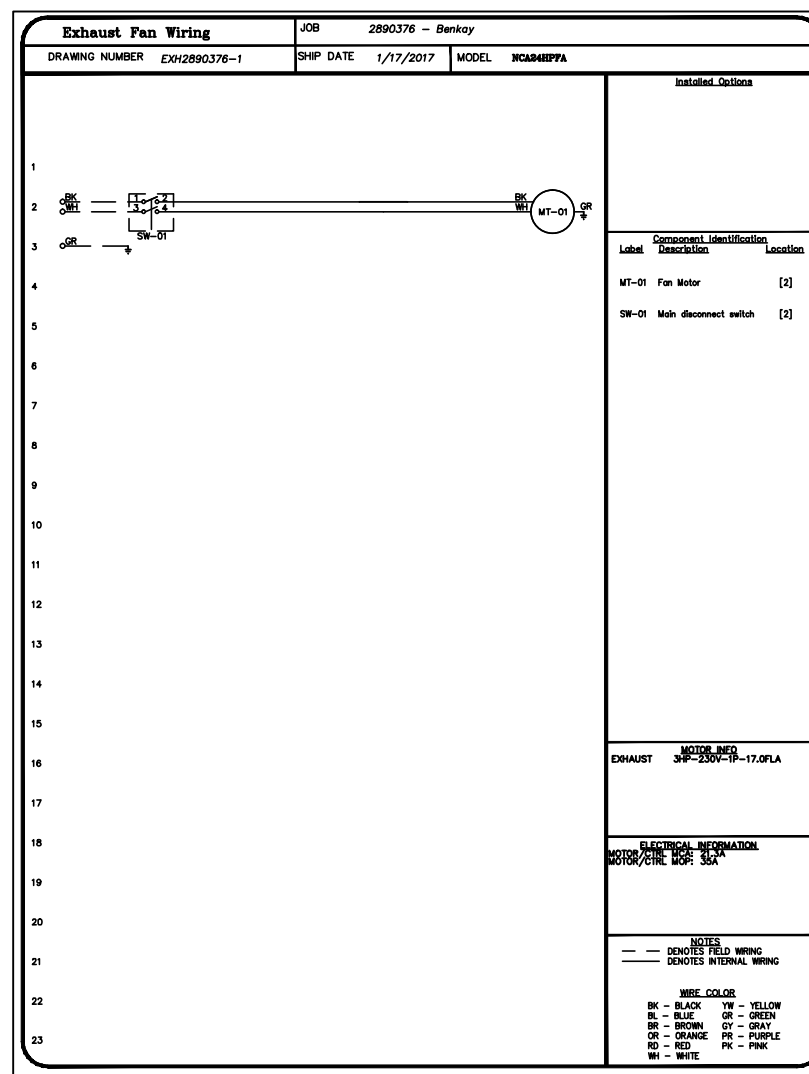
CAPTIVEAIRE
 JOB# Benkey
 LOCATION Lewiston, ME.
 DATE 1/17/2017 JOB # 2890376
 DWG # 8 DRAWN BY BFC-21
 REV. SCALE 3/8" = 1'-0"

GREASE DUCT SPECIFICATIONS:
 PROVIDE GREASE DUCT EQUAL TO CAPTIVEAIRE SYSTEMS MODEL "DW" ROUND 20 GAUGE 430 STAINLESS STEEL DUCTWORK. MODEL "DW" IS LISTED TO UL-1978 AND IS INSTALLED USING "V" CLAMP LOCKING CONNECTIONS SEALED WITH 3M FIRE BARRIER 2000 PLUS. MODEL "DW" DOES NOT REQUIRE WELDING PROVIDING IT HAS BEEN INSTALLED PER THE MANUFACTURER'S INSTALLATION GUIDE.
 PROVIDE RATED ACCESS DOORS AT EVERY CHANGE IN DIRECTION AND EVERY 12' ON CENTER. PER MANUFACTURER'S LISTING MODEL "DW" HORIZONTAL RUNS LESS THAN 75 FT. CAN BE SLOPED 1/16" PER 12". HORIZONTAL RUNS MORE THAN 75 FT. CAN BE SLOPED 3/16" PER 12". DUCT SHOULD BE SLOPED AS MUCH AS POSSIBLE TO REDUCE THE CHANCE OF GREASE ACCUMULATION IN HORIZONTAL RUNS.
 IF THE DUCT IS WITHIN 18 INCHES OF COMBUSTIBLE MATERIAL, PROVIDE UL-2221 LISTED DOUBLE WALL GREASE DUCT EQUAL TO CAPTIVEAIRE SYSTEMS MODEL "DW-2R, 3R, OR 3Z" ROUND 20 GAUGE 430 STAINLESS INNER DUCT INSULATED WITH A 24 GAUGE 430 STAINLESS OUTER SHELL.

CUSTOMER APPROVAL TO MANUFACTURE:
 Approved as Noted
 Approved with NO Exception Taken
 Provide and Maintain
 SIGNATURE _____
 Your Title _____ Date _____

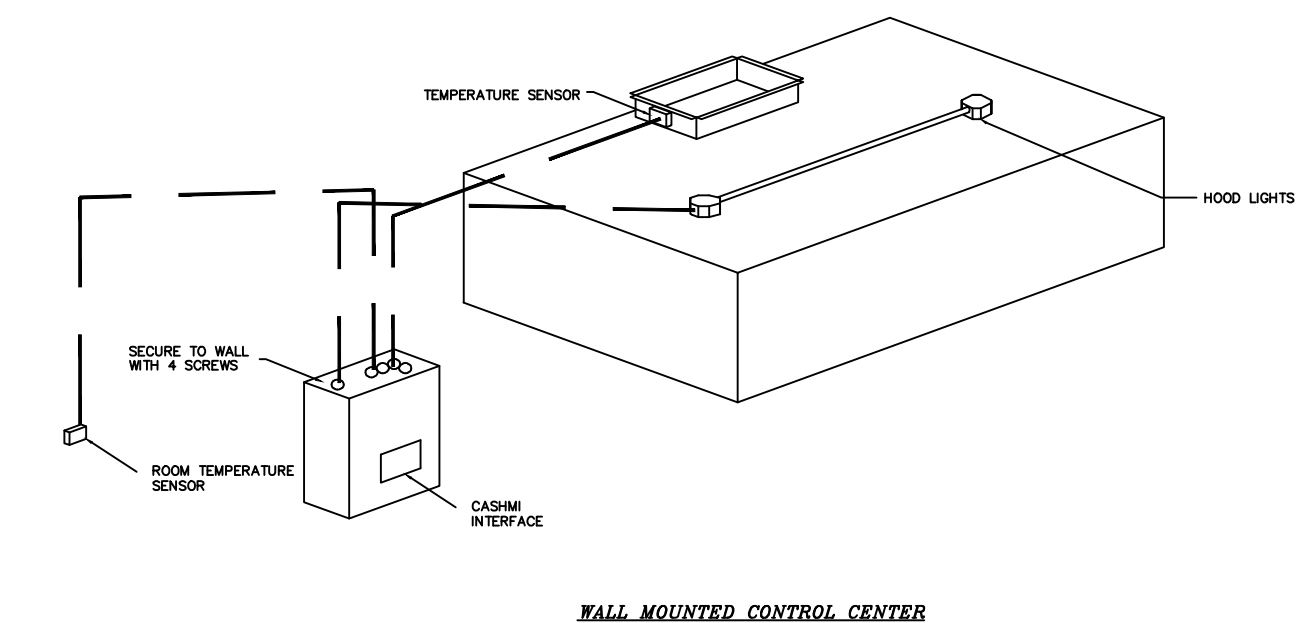


CAPTIVEAIRE
 JOB# Benkey
 LOCATION Lewiston, ME.
 DATE 1/17/2017 JOB # 2890376
 DWG # 9 DRAWN BY BFC-21
 REV. SCALE 3/8" = 1'-0"

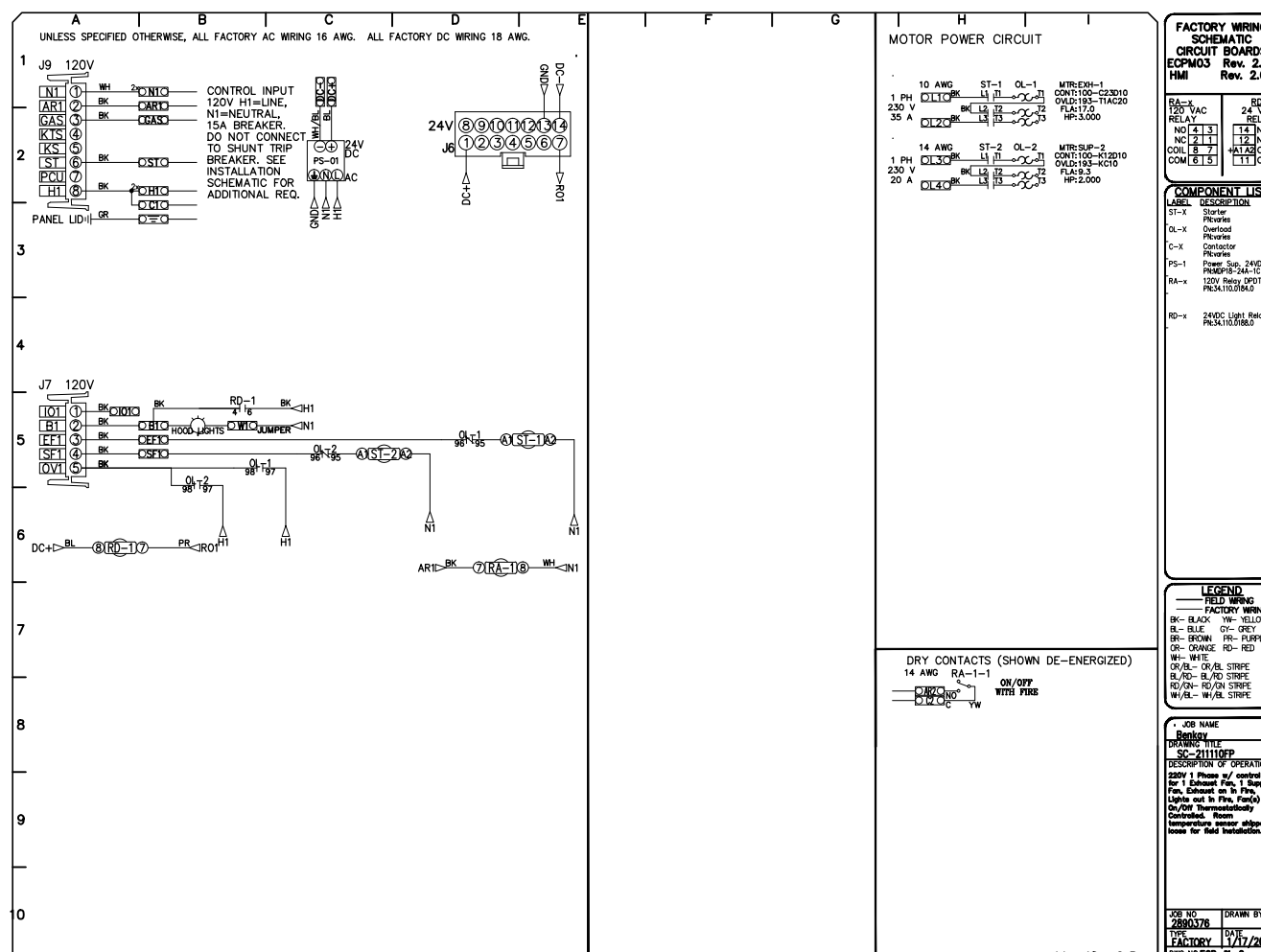
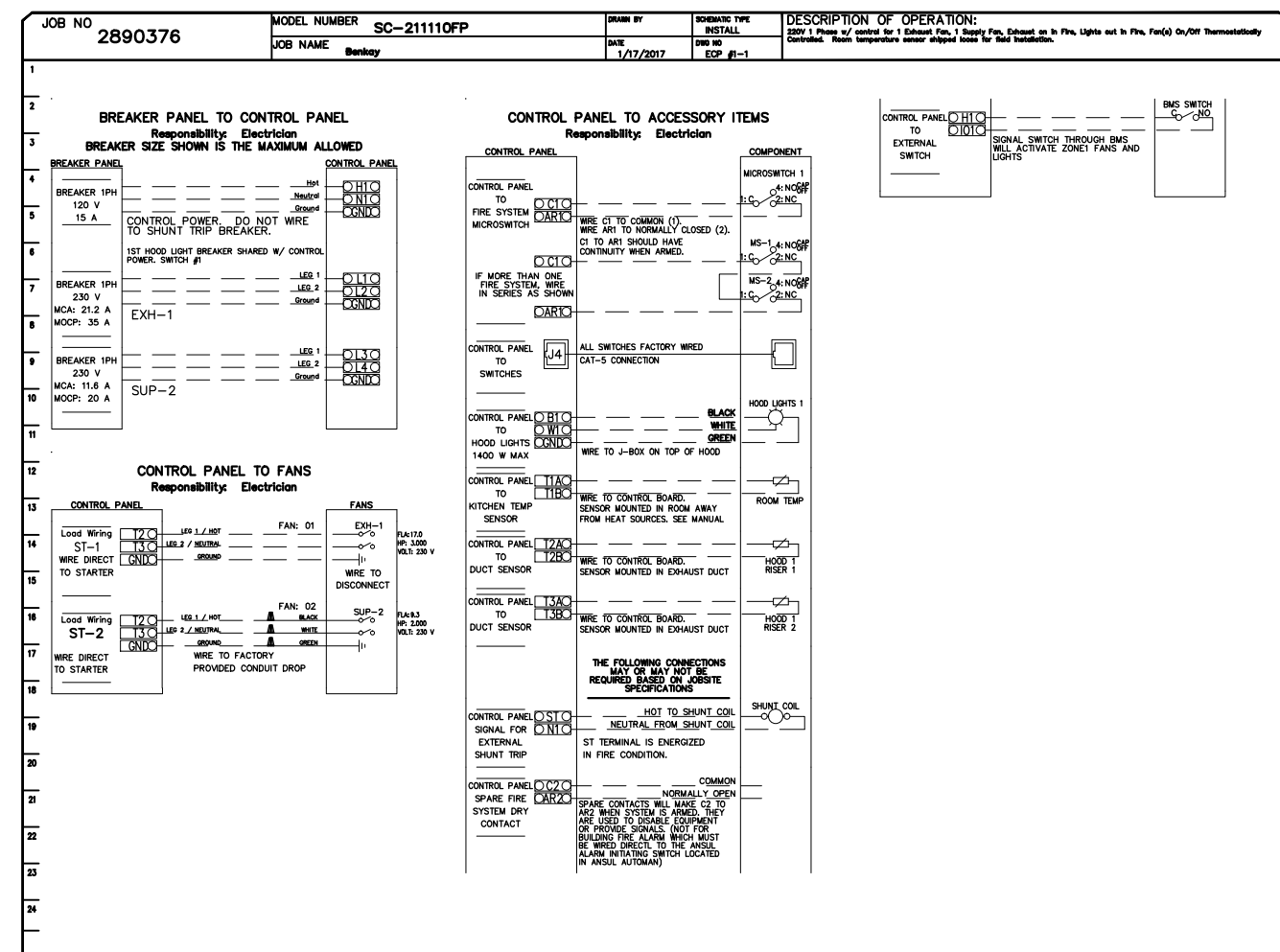


ELECTRICAL PACKAGES - Job#2890376

NO.	TAG	PACKAGE #	LOCATION	SWITCHES		OPTION	FANS CONTROLLED	
				LOCATION	QUANTITY		TYPE	1
1		SC-211109P	Wall Mount In SS Box	OS - SS Wall Mount Box	1 Light 1 Fan	Smart Controls Thermostatic Control	Supply	1 2,000 220 0.3



CAPTIVEAIRE
 JOB# Benkey
 LOCATION Lewiston, ME.
 DATE 1/17/2017 JOB # 2890376
 DWG # 12 DRAWN BY BFC-21
 REV. SCALE 3/8" = 1'-0"



ATM
 A. F. McDONALD & ASSOCIATES
 FOOD FACILITIES CONSULTANT - DESIGNER
 735 Main Street Shrewsbury, MA 01545
 Tel: 508.845.9891 Cell: 508.479.3511

SCALE: AS NOTED DATE: 02/02/17
 PROJECT: BENKEY REST
 16 MIDDLE STREET
 PORTLAND, ME
 CLIENT: -
 JOB#: SHEET#: K-4
 DRAWING: EXHAUST HOOD DETAIL