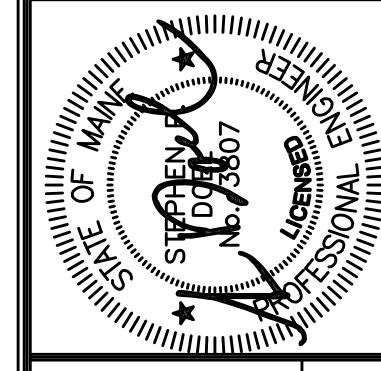


General Plumbing Notes
 1. Provide temperature maintenance electric heat-tracing on domestic hot water piping as shown (T).

MECHANICAL LEGEND

NOTE: USE SYMBOLS AND ABBREVIATIONS AS APPLICABLE FOR THIS MECHANICAL DRAWING SET. SOME SYMBOLS AND ABBREVIATIONS IN THIS LEGEND MAY NOT APPLY.

| SYMBOL | DESCRIPTION | SYMBOL | DESCRIPTION | ABBREVIATION | DESCRIPTION | ABBREVIATION | DESCRIPTION | ABBREVIATION | DESCRIPTION |
|--------|------------------------------------------|--------|-------------------------------------|--------------|-------------------------------------|--------------|------------------------------------------------|--------------|------------------------------------|
| CA | COMPRESSED AIR PIPING (CA) | 2 | BUTTERFLY VALVES w/ SINGLE ACTUATOR | AAV | AUTOMATIC AIR VENT | EV | EXHAUST VENT TAG | P | PLUMBING FIXTURE TAG |
| C | CONDENSATE DRAIN PIPING (C) | AD | BUTTERFLY VALVE w/ ACTUATOR | AD | ACCESS DOOR | FC | FLEXIBLE CONNECTION | FINETN | FENESTRATION |
| CTR | COOLING TOWER RETURN PIPING (CTR) | AFF | TRIPLE DUTY VALVE | AFF | ABOVE FINISHED FLOOR | FD | FIRE DAMPER | FF | PADDLE FAN TAG |
| CTS | COOLING TOWER SUPPLY PIPING (CTS) | AHU | UNION | AHU | AIR HANDLING UNIT TAG | FD | FLOOR DRAIN TAG | PSIA | POUNDS PER SQUARE INCH ABSOLUTE |
| CUR | CHILLED WATER RETURN PIPING (CUR) | AFSO | PIPE FLANGE | AFSO | ADJUSTABLE FLOW STATION FOR AMPERES | FLA | FULL LOAD AMPS | PSIG | POUNDS PER SQUARE INCH GAGE |
| CWS | CHILLED WATER SUPPLY PIPING (CWS) | AMPS | CARBON DIOXIDE SENSOR | AMPS | AMPERES | FLG | FUEL LEVEL GAUGE | PVC | POLYVINYL CHLORIDE (PIPE) |
| FOR | FUEL OIL RETURN PIPING (FOR) | AP | BASE MOUNTED PUMP | AP | ACCESS PANEL | FOR | FUEL OIL RETURN | RA | RETURN AIR |
| FOS | FUEL OIL SUPPLY PIPING (FOS) | APD | CARBTRIDGE TYPE INLINE PUMP | APD | AIR PRESSURE DROP | FOR | FUEL OIL SUPPLY | RD | ROOF DRAIN |
| G | GAS PIPING (G) | AS | VERTICAL INLINE PUMP | AS | AIR SEPARATOR TAG | FRHB | FROST PROOF HOSE BIBB | RDE | RECOMMENDED DUAL ELEMENT FUSE AMPS |
| HUR | HOT WATER RETURN PIPING (HUR) | ATC | FLEXIBLE PIPE CONNECTION (FC) | ATC | AUTOMATIC TEMPERATURE CONTROL | FRM | FEET PER MINUTE | RFM | RADIANT FLOOR MANIFOLD TAG |
| HWS | HOT WATER SUPPLY PIPING (HWS) | B | FITCH DOWN | B | BOLTER TAG | FS | FLOOR SINK TAG | RG | RETURN GRILLE TAG |
| HL | REFRIGERANT LIQUID PIPING (RL) | BD | RETROCK | BD | BYPASS DAMPER TAG | FT | FEET | RHW | RECIRCULATED HOT WATER |
| RL | REFRIGERANT LIQUID PIPING (RL) | BFP | PRESSURE GAGE WITH GAGE COCK | BFP | BACKFLOW PREVENTER TAG | FTR | FINTUBE RADIATION TAG | RLA | RUNNING LOAD AMPS |
| RG | REFRIGERANT GAS PIPING (RG) | BTU/H | THERMOMETER IN WELL | BTU/H | BRITISH THERMAL UNITS PER HOUR | GA | GAGE | RR | REVOLUTIONS PER MINUTE |
| LTHUR | LOW TEMP HOT WATER RETURN PIPING (LTHUR) | B.S. | WATER FLOW SWITCH | B.S. | BELOW SLAB | GAL | GALLONS | RPS | REVOLUTIONS PER SECOND |
| LTHUS | LOW TEMP HOT WATER SUPPLY PIPING (LTHUS) | CA | PRESSURE SWITCH OR SENSOR | CA | COMPRESSED AIR PIPING | GFH | GAS FIRED WATER HEATER TAG | RZ | REDUCED PRESSURE ZONE |
| SA | SANITARY PIPING BELOW FLOOR (SAN) | CM | IMPRESSION TEMPERATURE SENSOR | CM | CUBIC FEET PER MINUTE | GPH | GALLONS PER HOUR | RR | RETURN REGISTER TAG |
| SA | SANITARY PIPING ABOVE FLOOR (SAN) | CHLR | DUCT MOUNTED SMOKE DETECTOR | CHLR | CHILLER TAG | GRM | GALLONS PER MINUTE | RTU | ROOM TEMPERATURE SENSOR |
| SA | SANITARY VENT PIPING | CO | SWITCH w/ PILOT LIGHT | CO | CLEANOUT | GSU | GAS UNIT HEATER TAG | RV | RELIEF VALVE |
| SA | SANITARY VENT PIPING | CONV | THERMOSTAT OR SENSOR ON WALL | CONV | CONVECTOR TAG | HC | HEATING COIL TAG | RUL | RAINWATER LEADER |
| SA | RAINWATER LEADER ABOVE SLAB (RUL) | CUH | TEMP. SENSOR w/ TAMPERPROOF GUARD | CUH | CABINET UNIT HEATER TAG | HP | HORSEPOWER | SA | SUPPLY AIR |
| SA | DOMESTIC COLD WATER PIPING (CW) | CP | MANUAL AIR VENT | CP | CIRCULATING PUMP TAG | HRV | HEAT RECOVERY VENTILATOR TAG | SAN | SANITARY (DRAIN & WASTE) |
| SA | DOMESTIC HOT WATER PIPING (HW) | CT | NOTE TAG (NUMBER) | CT | COOLING TOWER TAG | HU | HOT WATER | SD | SMOKE DAMPER |
| SA | RECIRCULATED HOT WATER PIPING (RHU) | CV | AIR DEVICE TAG (LETTER) WITH CRM | CV | VALVE COEFFICIENT | HUR | HOT WATER SUPPLY AND RETURN | SEER | SEASONAL ENERGY EFFICIENCY RATIO |
| SA | PIPE CAP | CH | ROOM NUMBER | CH | COLD WATER | I-B-R | INSTITUTE OF BOILER AND RADIATOR MANUFACTURERS | SG | SUPPLY GRILLE TAG |
| SA | DIRECTION OF FLUID FLOW | CHLR | CHILLED WATER SUPPLY AND RETURN | CHLR | CHILLER TAG | FMH | FINDING MANUFACTURERS | SP | STATIC PRESSURE |
| SA | ELBOW UP | CHLR | DRY BULB | CHLR | CHILLED WATER SUPPLY AND RETURN | IN | INCHES | SP | SUPPLY PUMP TAG |
| SA | ELBOW DOWN | DB | DECIBELS RELATIVE TO | DB | DRY BULB | IV | INTAKE VENT TAG | SR | SUPPLY REGISTER TAG |
| SA | PIPE TEE UP | DB RE | DOUBLE CHECK | DB RE | DECIBELS RELATIVE TO | LAT | LEAK MONITORING PANEL | SOFT | SQUARE FEET |
| SA | PIPE TEE DOWN | DCA | DOUBLE CHECK ATMOSPHERIC | DCA | DOUBLE CHECK ATMOSPHERIC | L | LOUVER TAG | TEMP | TEMPERATURE |
| SA | PIPE REDUCER | DC | DUCT w/ FLEXIBLE CONNECTION (FC) | DC | DOUBLE CHECK | TCF | TEMPERATURE CONTROL PANEL | THV | THERMOSTATIC MIXING VALVE TAG |
| SA | PIPE WITH GUIDE | DEG F | LARGED DUCT | DEG F | DEGREES FAHRENHEIT | TSP | TOTAL STATIC PRESSURE | TYP | TYPICAL |
| SA | PIPE WITH ANCHOR | DIW | DUCT w/ ACUSTIC LINING | DIW | DOWN IN WALL | UH | UNIT HEATER TAG | UH | UNIT HEATER TAG |
| SA | BUTTERFLY VALVE | DN | DUCT w/ SQUARE-TO-ROUND TRANSITION | DN | DOWN | UW | UNITS PER HOUR | VBA | VARIABLE AIR VOLUME BOX TAG |
| SA | OS & Y GATE VALVE | EA | FLEXIBLE DUCT | EA | ENTERING AIR TEMPERATURE | VHZ | VOLTS/PHASES/HERTZ | VB | VACUUM BREAKER |
| SA | BACKFLOW PREVENTER (BFP) | EAT | MOTOR OPERATED DAMPER | EAT | ENTERING AIR TEMPERATURE | VFD | VARIABLE FREQUENCY INVERTER DRIVE | VFD | VARIABLE FREQUENCY INVERTER DRIVE |
| SA | CHECK VALVE | EAT | AIRFLOW OUT | EAT | ENTERING AIR TEMPERATURE | VTR | VENT THRU ROOF | VTR | VENT THRU ROOF |
| SA | BALANCING VALVE (ADJUSTABLE) | EAT | AIRFLOW IN | EAT | ENTERING AIR TEMPERATURE | W | WATERS | W | WATERS |
| SA | AUTOMATIC FLOW CONTROL VALVE | EDB | ENTERING ROTOR AMPS | EDB | ENTERING DRY BULB | W | WATERS | W | WATERS |
| SA | RELIEF VALVE (RV) | EDC | LOW WATER GIGOUT | EDC | ELECTRIC DUCT COIL TAG | W | WATERS | W | WATERS |
| SA | BALL VALVE | EER | ELECTRIC DUCT COIL TAG | EER | ENERGY EFFICIENCY RATIO | W | WATERS | W | WATERS |
| SA | BALL VALVE | EF | ENERGY EFFICIENCY RATIO | EF | ENERGY EFFICIENCY RATIO | W | WATERS | W | WATERS |
| SA | 3/4" BALL VALVE WITH 3/4" HOSE END | EG | EFFICIENCY | EG | EXHAUST GRILLE TAG | W | WATERS | W | WATERS |
| SA | GATE VALVE | EG | EXHAUST GRILLE TAG | EG | EXHAUST GRILLE TAG | W | WATERS | W | WATERS |
| SA | SOLENOID VALVE | ER | EXHAUST REGISTER TAG | ER | EXHAUST REGISTER TAG | W | WATERS | W | WATERS |
| SA | PRESSURE REDUCING VALVE | ESP | EXTERNAL STATIC PRESSURE | ESP | EXTERNAL STATIC PRESSURE | W | WATERS | W | WATERS |
| SA | FUSIBLE VALVE | ET | EXPANSION TANK TAG | ET | ENTERING WATER TEMPERATURE | W | WATERS | W | WATERS |
| SA | STRAINER w/ BLOWDOWN BALL VALVE | EUB | ENTERING WATER TEMPERATURE | EUB | ENTERING WATER TEMPERATURE | W | WATERS | W | WATERS |
| SA | 2-WAY CONTROL VALVE | EUT | ENTERING WATER TEMPERATURE | EUT | ENTERING WATER TEMPERATURE | W | WATERS | W | WATERS |
| SA | SOLENOID VALVE | EXG | EXISTING | EXG | EXISTING | W | WATERS | W | WATERS |
| SA | 3-WAY CONTROL VALVE | | | | | W | WATERS | W | WATERS |
| SA | 3-WAY CONTROL VALVE (TOP VIEW) | | | | | W | WATERS | W | WATERS |
| SA | 4-WAY CONTROL VALVE (TOP VIEW) | | | | | W | WATERS | W | WATERS |



Prepared For: **Archetype**
 Union Wharf
 Portland, ME 04101

Consultant: **BENNETT ENGINEERING**
 MECHANICAL • ELECTRICAL
 (207) 865-9475

Architect: **ARCHETYPE architects**
 48 Union Wharf Portland, Maine 04101
 (207) 772-6002 ARCHETYPE@ARCHETYPEPA.COM

Project: **16 MIDDLE STREET OFFICE BUILDING**
 MIDDLE STREET
 PORTLAND, MAINE

Revisions: 02/20/2017: CD ISSUE

Date: **20 FEB 2017**
 Scale: **1/8"=1'-0" U.N.O.**
 Tilson Technologies
 PLUMBING 3rd FLOOR PLAN

M1.03