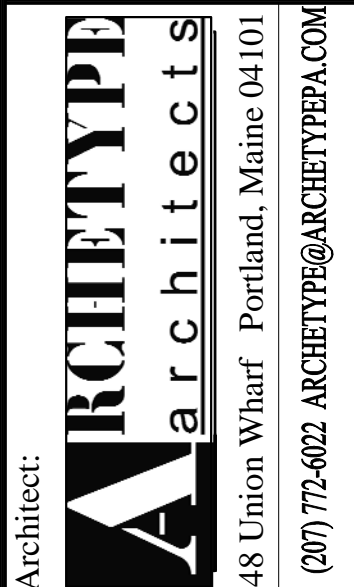


Prepared For: **Archetype**

Union Wharf
Portland, ME 04101



Consultant:



Project: **16 MIDDLE STREET
OFFICE BUILDING**

MIDDLE STREET
PORTLAND, MAINE

Revisions: 02/20/2017, CD ISSUE

Scale: 1/8"=1'-0" U.N.O.

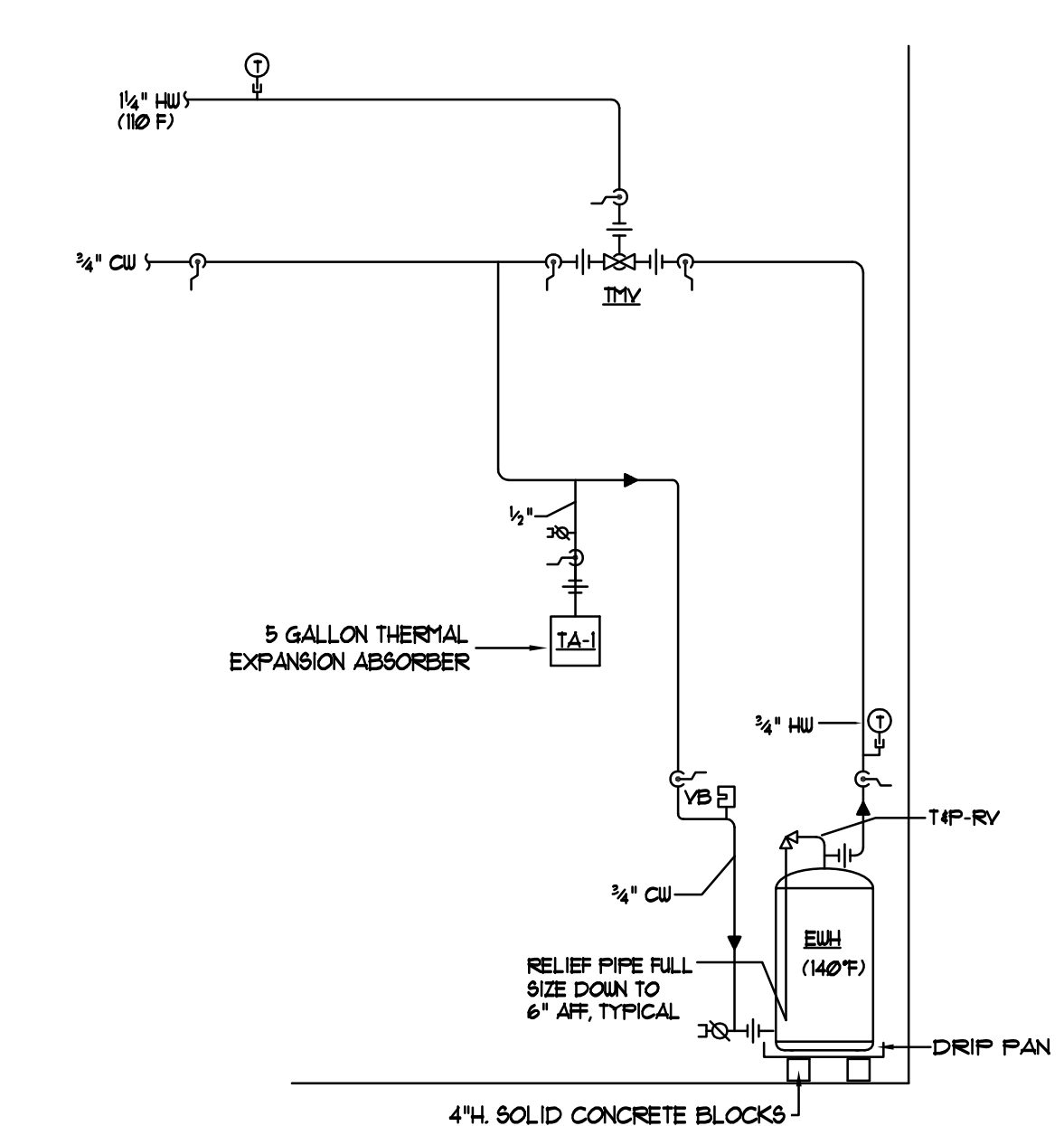
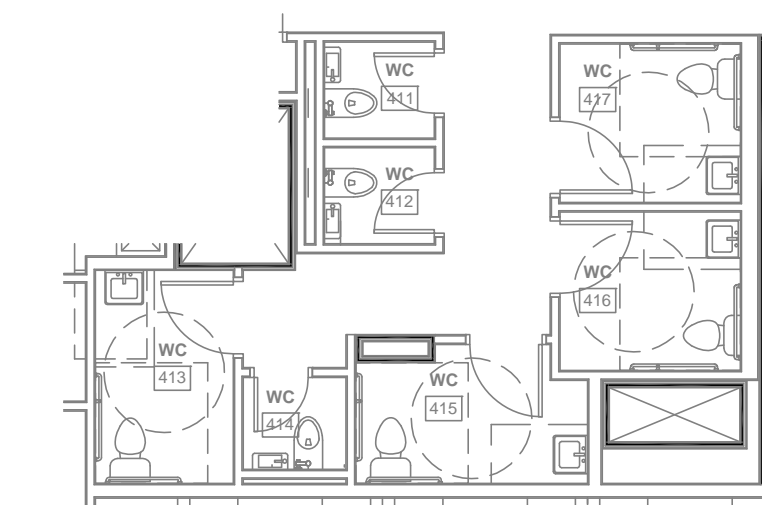
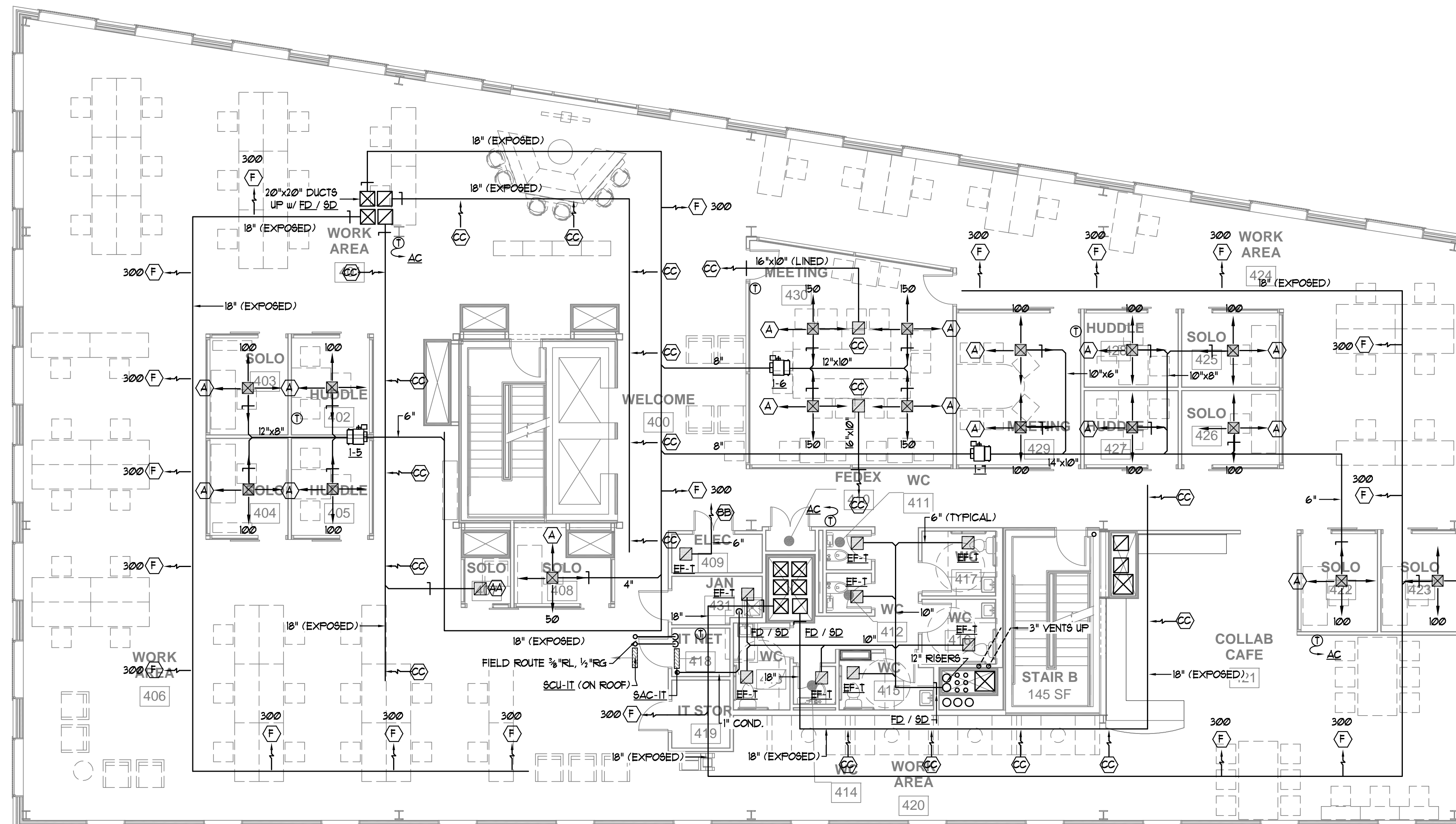
Date: 20 FEB 2017

Tilson Technologies
HVAC 4th FLOOR PLAN

M1.02

General Mechanical Notes

- Exposed supply ductwork shall be double-wall, spiral seam, solid liner, 1" fiberglass insulation and Paint-Grip galvanizing for field painting. Exposed return air ductwork shall be spiral seam with Paint-Grip galvanizing for field painting.
- Ductwork downstream of Variable Air Volume Boxes shall have 1/2" thick duct liner, Armaflex SA, or equal.
- Provide combination fire / smoke dampers (FD / SD) at all locations where the ducts penetrate the shaft wall enclosures for ducts that penetrate two (2) or more floors. For ducts that only penetrate one (1) floor, fire dampers are required.
- Concealed supply ductwork shall be insulated with 2" thick fiberglass ductwrap w/ FBK.
- Domestic hot and cold water piping shall be insulated with 1" thick fiberglass pipe insulation.
- Coordinate exposed ductwork with the lighting plan.



WATER HEATER PIPING SCHEMATIC
NT6

SPLIT-SYSTEM AIR CONDITIONER PERFORMANCE SCHEDULE * - AT ARI CONDITIONS OF 85°F AMBIENT/65°F INDOOR WB

TAG	TOTAL COOLING (MBH)*	AIRFLOW (CFM)	MOISTURE REMOVAL (PINTS/HR)	COND. DRAIN (IN)	EER (BTUH/WATT)	SOUND RATING (DB)	WEIGHT (LBS)	REFRIGERANT PIPE SIZE (IN)		ELECTRICAL REQUIREMENTS				BASIS OF DESIGN MITSUBISHI		
								LIQUID	GAS	MCA	MAX FUSE	V/PH/Hz	SERVICE	ARRANGEMENT	MODEL	
SAC-IT	11.9	230	2.1	1"	13.8	40	62	3/8"	3/8"	1.0	15.0	208/1/60	IT NET	WALL	FKA-A12FAL	

SPLIT-SYSTEM CONDENSING UNIT PERFORMANCE SCHEDULE * - AT ARI CONDITIONS OF 95°F AMBIENT / 67°F INDOOR WB
* - AT 45°F, SATURATED SUCTION TEMPERATURE

TAG	TOTAL COOLING (MBH)*	REFRIGERANT	EER	MINIMUM AMBIENT TEMP (°F)	FOOTPRINT DIMENSION (INCHES)	OPERATING WEIGHT (LBS)	ELECTRICAL REQUIREMENTS			BASIS OF DESIGN MITSUBISHI			
							MCA	MOP	V/PH/Hz	SOUND (BEL)	SERVICE	MODEL	
SCU-IT	11.9	R-410A	13.1	0°	37x13	163	13.0	15.0	208/1/60	-	-	SAC-IT	(M) FUY-A12NHA

* PROVIDE w/ LOW AMBIENT CONTROLS.