

PLUMBING FIXTURE CONNECTION SCHEDULE						
TAG	DESCRIPTION	SAN	VENT	CW	HW	GAS
P1	WALL MOUNTED FV WC, ELONGATED BOWL	4"	2"	1"	-	-
PIA / PIB	FLOOR MOUNTED FV WC / non-ADA WC, 15" H. / ADA WC 11"H.	3"	2"	1"	-	-
PIC	ADA FLOOR-MOUNTED TANK TYPE WATER CLOSET	3"	2"	1/2"	-	-
P2 / P2A / P2B	ADA COUNTERTOP / WALL-MOUNT LAVATORY	2"	1-1/2"	1/2"	1/2"	-
P3	ADA STAINLESS STEEL COUNTERTOP SINK	-	-	-	-	-
P4	MOP SERVICE SINK	3"	2"	1/2"	1/2"	-
P5	ADA / NON-ADA SHOWER VALVE AND 2" DRAIN	2"	1-1/2"	1/2"	1/2"	-
-	-	-	-	-	-	-
-	-	-	-	-	-	-
3FD	3" FLOOR DRAIN w/ TRAP PRIMER CONNECTION	3"	2"	1/2"	-	-
ETP	ELECTRONIC TRAP PRIMER (ETP)	-	-	1/2"	-	-
IW	INDIRECT WASTE RECEPTOR	3"	2"	-	-	-

MINIMUM SIZE OF BELOW SLAB SANITARY & VENT PIPING SHALL BE 2".

General Mechanical Notes

- Exposed supply ductwork shall be double-wall, spiral seam, solid liner, 1" fiberglass insulation and Paint-Grip galvanizing for field painting. Exposed return air ductwork shall be spiral seam with Paint-Grip galvanizing for field painting.
 - Ductwork downstream of Variable Air Volume Boxes shall have 1/2" thick duct liner, AmFlex SA, or equal.
 - Provide combination fire / smoke dampers (FD / SD) at all locations where the ducts penetrate the shaft wall enclosures for ducts that penetrate two (2) or more floors. For ducts that only penetrate one (1) floor, fire dampers are required.
 - Concealed supply ductwork shall be insulated with 2" thick fiberglass ductwrap w/ FSK.
 - Domestic hot and cold water piping shall be insulated with 1" thick fiberglass pipe insulation.
 - Coordinate exposed ductwork with the lighting plan.
1. 90 degree duct elbows shall be mitered with angle thickness turning vanes or radiused with a 4" radius equal to 1.5 times the duct width.

FAN / LIGHT PERFORMANCE SCHEDULE

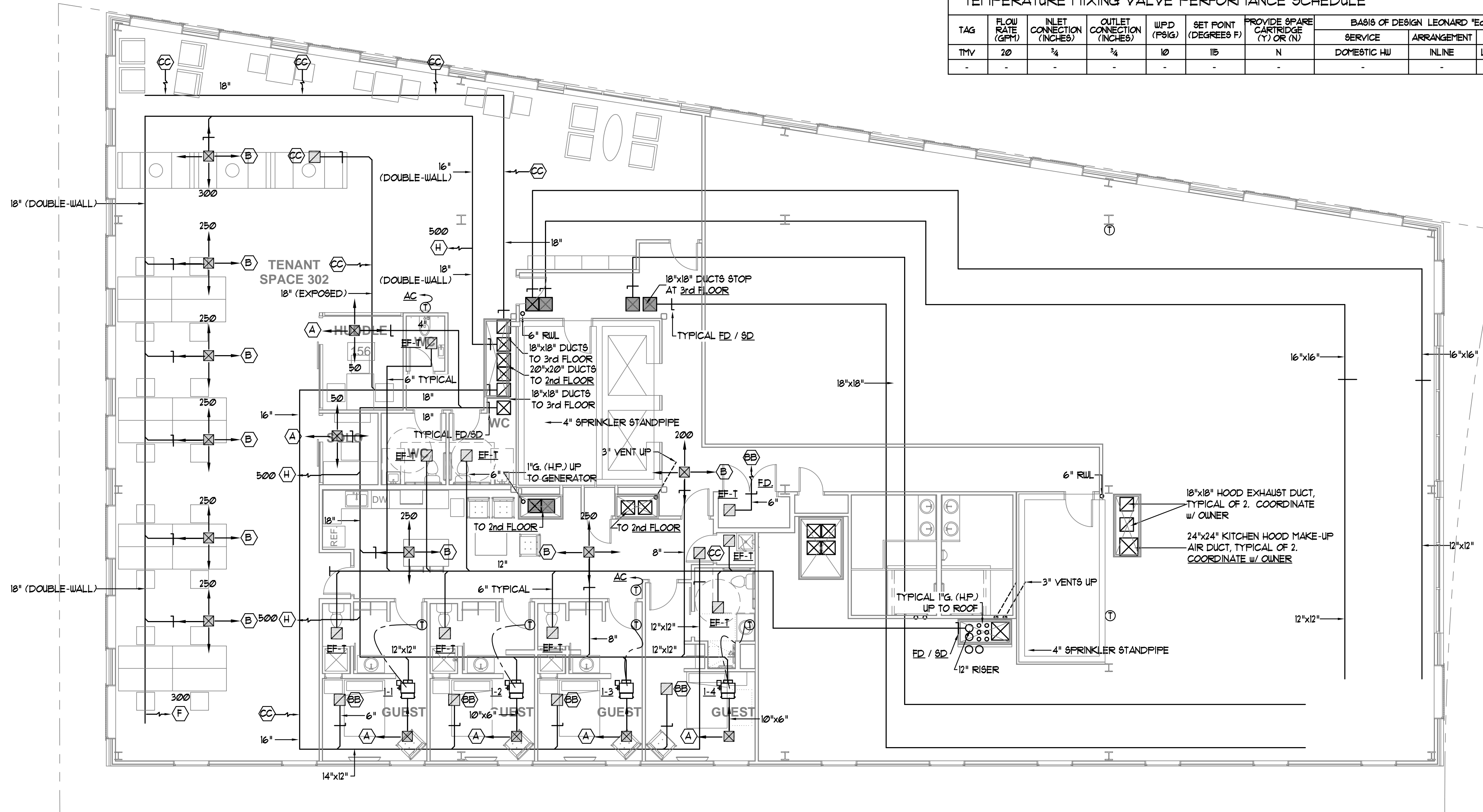
TAG	AIRFLOW (CFM)	T.S.P (IN.WG)	NOISE (SONES)	RPM	DRIVE	ELECTRICAL REQUIREMENTS				BASIS OF DESIGN - PANASONIC "WhisperGreen Select"			
						HP	BHP	WATTS	AMPS	V/PH/Hz	SERVICE	ARRANGEMENT	MODEL
EF-T	20/80	0.25	0.4	-	DIRECT	-	-	11.0	0.2	120/1/60	TOILETS / JANITOR / ELECTRICAL	CEILING	FV-05-11VKLI

Notes: EF-T shall come with motion sensors and be multi-speed with time delay and multi-speed plug n' play modules. See Plans for quantities.

Notes: Furnish each fan-light unit with gravity operated backdraft damper and two (2) T10 LED lamps.

TEMPERATURE MIXING VALVE PERFORMANCE SCHEDULE

TAG	FLOW RATE (GPM)	INLET CONNECTION (INCHES)	OUTLET CONNECTION (INCHES)	W/P/D (PSIG)	SET POINT (DEGREES F)	PROVIDE SPARE CARTRIDGE (Y) OR (N)	BASIS OF DESIGN LEONARD "Eco-Mix"		
							SERVICE	ARRANGEMENT	MODEL
TMV	20	3/4	3/4	10	115	N	DOMESTIC HW	INLINE	LV-381A-LF-BDT



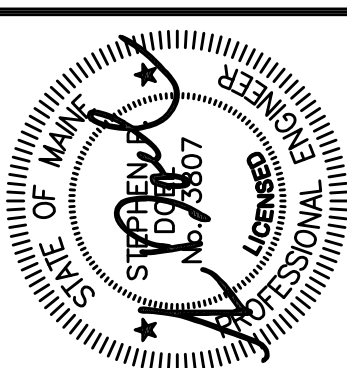
AIR DEVICE PERFORMANCE SCHEDULE

TAG	PANEL SIZE (IN)	NECK SIZE (IN)	AIRFLOW (MAX. CFM)	SPLOS (IN.WG)	THROW(L)	THROW(S)	Nc	BASIS OF DESIGN (F) FANTECH, PRICE		
								DUCT CONN. (IN)	PATTERN	MODEL
A	24x24	6x6	150	0.05	-	-	25	SEE DIAGS	SEE DIAGS	AMX-3AL
B	24x24	9x9	350	0.05	-	-	30	SEE DIAGS	SEE DIAGS	AMX-3AL
C	24x24	12x12	500	0.05	-	-	30	SEE DIAGS	SEE DIAGS	AMX-3AL
D	24x24	15x15	700	0.05	-	-	30	SEE DIAGS	SEE DIAGS	AMX-3AL
F	-	12x6	250	0.05	-	-	25	SEE DIAGS	5" DN.	RCG / C / DVAL / B12
H	-	18x12	500	0.05	-	-	25	SEE DIAGS	5" DN.	RCG / C / DVAL / B12
I	-	8"ø	220	0.05	-	-	18	SEE DIAGS	ADJUSTABLE	(F) RHV
AA	-	8x8	100	0.05	-	-	30	SEE DIAGS	1/2", 45°	60DAL
BB	-	12x12	400	0.05	-	-	30	SEE DIAGS	1/2", 45°	60DAL
CC	-	16x16	600	0.05	-	-	30	SEE DIAGS	1/2", 45°	60DAL
DD	-	22x22	1200	0.05	-	-	30	SEE DIAGS	1/2", 45°	60DAL
EE	-	22x42	3000	0.05	-	-	25	SEE DIAGS	1/2", 45°	98
FF	-	24x16	1000	0.05	-	-	25	SEE DIAGS	1/2", 45°	98

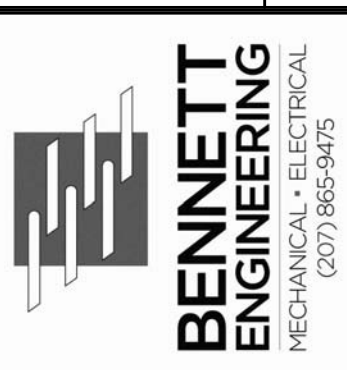
ELECTRIC WATER HEATER PERFORMANCE SCHEDULE

TAG	STORAGE (GALS)	INPUT (KW)	RECOVERY @ 100°F (GPH)	ELECTRICAL REQUIREMENTS			BASIS OF DESIGN AO Smith "Conservationist"			
				HP	WATTS	V/PH/Hz	SERVICE	FUEL	MODEL	DIMENSIONS
EWH	50	5.5	25.0	-	-	208/1/60	DOM HW	ELECTRIC	PXNT-50	12"H. x 20"ø

Note: Electric heating elements shall be wired for "non-simultaneous" operation. See Drawings for quantities.



Prepared For: **Archetype**
Union Wharf
Portland, ME 04101



Consultant: **ARCHETYPE architects**
48 Union Wharf Portland, Maine 04101
(207) 772-6002 ARCHETYPE@ARCHETYPEPEA.COM

Project: **16 MIDDLE STREET OFFICE BUILDING**
MIDDLE STREET
PORTLAND, MAINE

Revisions: 02/20/2017: CD ISSUE

Scale: 1/8"=1'-0" U.N.O.

Date: 20 FEB 2017
Tilson Technologies
HVAC 3rd FLOOR PLAN

M1.01